



WFP EVALUATION

WFP Evaluation Function

EB Induction Session

Anne-Claire Luzot, Director of Evaluation



World Food Programme

SAVING
LIVES
CHANGING
LIVES

September 2023

EXECUTIVE BOARD

EXECUTIVE DIRECTOR
CINDY McCAIN

Chief of Staff
MEGHAN LATCOVICH

INSPECTOR GENERAL AND
OVERSIGHT OFFICE

OFFICE OF EVALUATION

LEGAL OFFICE

OFFICE OF THE EXECUTIVE
DIRECTOR

GLOBAL PRIVACY OFFICE

**Assistant Executive Director
and Chief Financial Officer**
Management Department
MANOJ JUNEJA

CORPORATE
PLANNING AND
PERFORMANCE

TECHNOLOGY

CORPORATE
FINANCE

MANAGEMENT
SERVICES

RISK
MANAGEMENT

SECURITY

Assistant Executive Director
Partnerships and Advocacy Department
UTE KLAMERT

PUBLIC
PARTNERSHIPS
AND RESOURCING

PRIVATE
PARTNERSHIPS
AND FUNDRAISING

COMMUNICATIONS
ADVOCACY AND
MARKETING

STRATEGIC
PARTNERSHIPS

UN SYSTEM AND
MULTILATERAL
ENGAGEMENT
(NEW YORK)

GENEVA
GLOBAL OFFICE

BRUSSELS
GLOBAL OFFICE

WASHINGTON
GLOBAL OFFICE

BERLIN
GLOBAL OFFICE

ADDIS ABABA
BEIJING
COPENHAGEN
DUBAI

LONDON
OTTAWA
SEOUL
TOKYO

Reporting to Public Partnerships
and Resourcing
Reporting to Strategic Partnerships

**Deputy Executive Director
and Chief Operating Officer**
Operations Management Department
CARL SKAU

EXECUTIVE
BOARD
SECRETARIAT

EMERGENCY
OPERATIONS

OPERATIONS
MANAGEMENT
SUPPORT

SUPPLY CHAIN
OPERATIONS

**REGIONAL
BUREAUX**

BANGKOK

CAIRO

DAKAR

JOHANNESBURG

NAIROBI

PANAMA

COUNTRY OFFICES

Assistant Executive Director
**Programme and Policy Development
Department**
VALERIE GUARNIERI

PROGRAMME -
HUMANITARIAN
AND
DEVELOPMENT

RESEARCH,
ASSESSMENT AND
MONITORING

NUTRITION

CASH-BASED
TRANSFERS

SCHOOL-BASED
PROGRAMMES

INNOVATION AND
KNOWLEDGE
MANAGEMENT

GENDER
EQUALITY

BRASILIA OFFICE

Assistant Executive Director
Workplace Culture Department
JOYCE LUMA (a.i.)

HUMAN
RESOURCES

STAFF WELLNESS

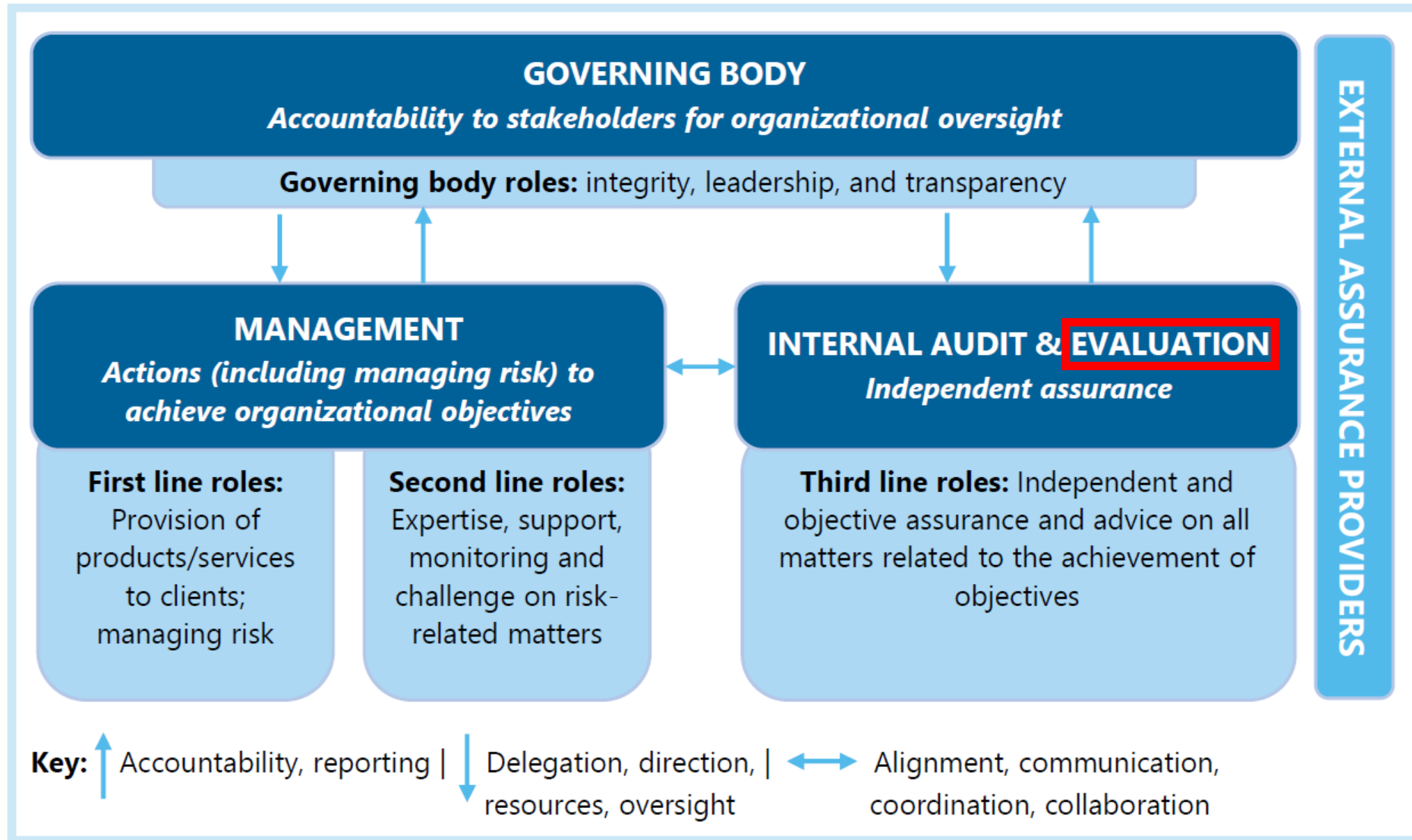
OFFICE OF THE
OMBUDSMAN

ETHICS OFFICE

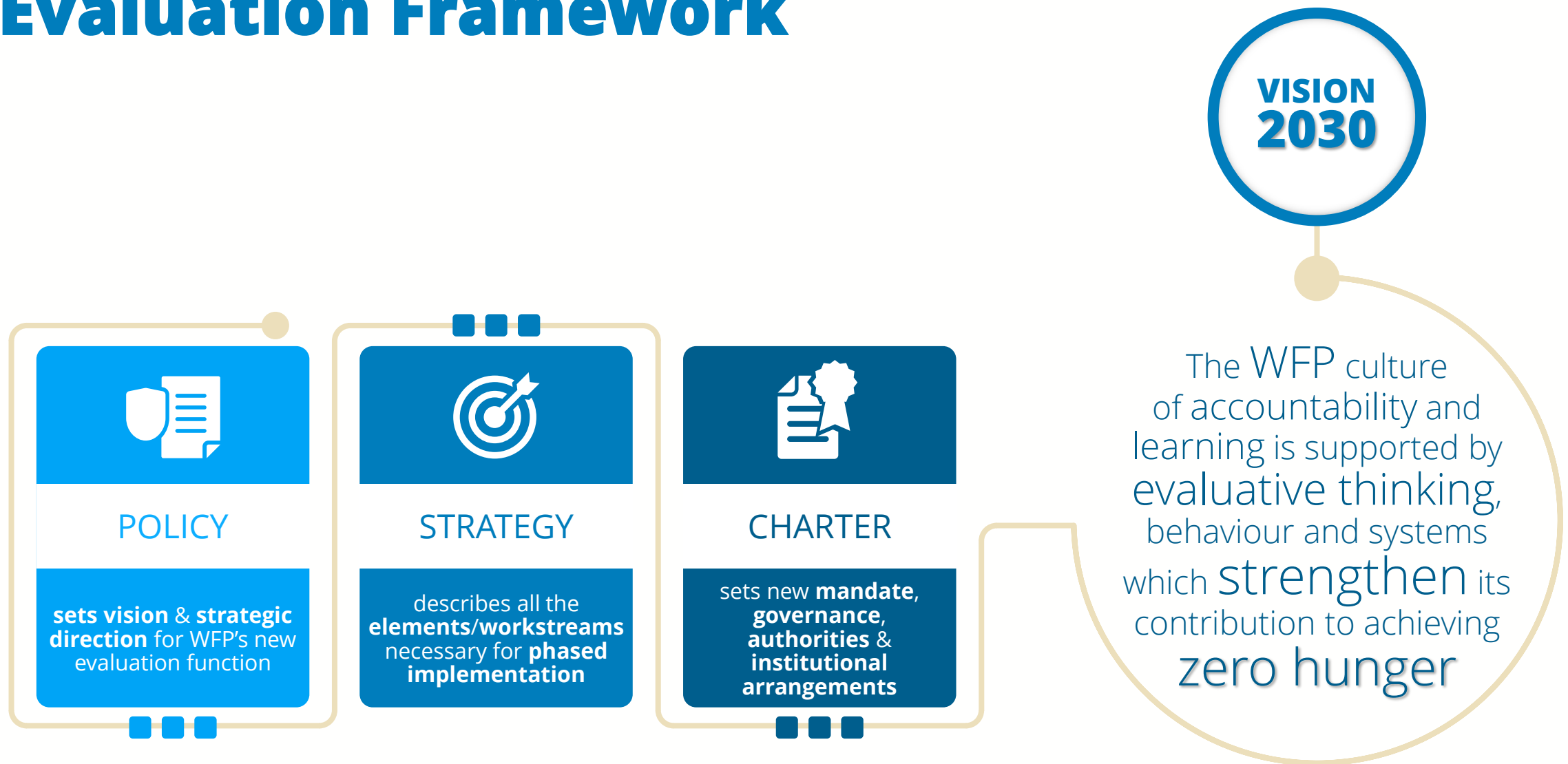
WFP ORGANIGRAM

UPDATED: 25 May 2023

WFP's three lines model



Evaluation Framework



WFP Evaluation Function oversight: Executive Board Role in evaluation

OVERSIGHT

- Exercise oversight of evaluation function
- Guide management in policy implementation
- Consider Annual Evaluation Report & all centralized evaluation reports
- Consider management response & follow-up action reports

NORMATIVE FRAMEWORK

- Approve appointment, made by the Executive Director, of Director of Evaluation
- Provide strategic guidance through Annual Consultation on Evaluation
- Foster evaluation culture as members of WFP Governing Body

RESOURCING

- Approve Office of Evaluation's budget
- Review trends in human & financial resources dedicated to evaluation

PLANNING

- Review Office of Evaluation's work plan & priorities within WFP's Management Plan

USE

- Consider use of evaluation evidence when approving new policies, strategies, programmes, Management Plans, etc.
- Use evidence generated by evaluation in its decision-making

Evaluation planning and reporting

Evaluation Policy 2022
Corporate Evaluation Strategy
Annual Consultation on Evaluation with EB



Evaluation Function Work Plan



Annual Evaluation Report
Evaluation Round Tables
Executive Board

PLANNING

IMPLEMENTING

REPORTING

WFP Management Plan



Evaluation Reports

<https://www.wfp.org/independent-evaluation>

Upcoming CENTRALIZED Evaluation Reports

EB.2.2023



CSPEs

- Benin
- Burkina Faso
- Cambodia
- Dominican Republic
- Ghana
- Haiti
- Malawi
- Namibia
- Nepal
- Philippines
- Senegal



Corporate Emergency Evaluation of WFP's Response in Myanmar

EB.1.2024



CSPEs

- Madagascar
- Bhutan

EB.A.2024



CSPEs

- Guinea
- Lesotho
- Rwanda



Strategic evaluation on protection from sexual exploitation and abuse and management response



- Annual evaluation report 2023
- Implementation Status of Evaluation Recommendations (ISR, led by CPP)

Institutional arrangements





SAVING
LIVES
CHANGING
LIVES

THANK
YOU

