



World Food
Programme

Launch of the cash-based transfers and gender impact evaluation window

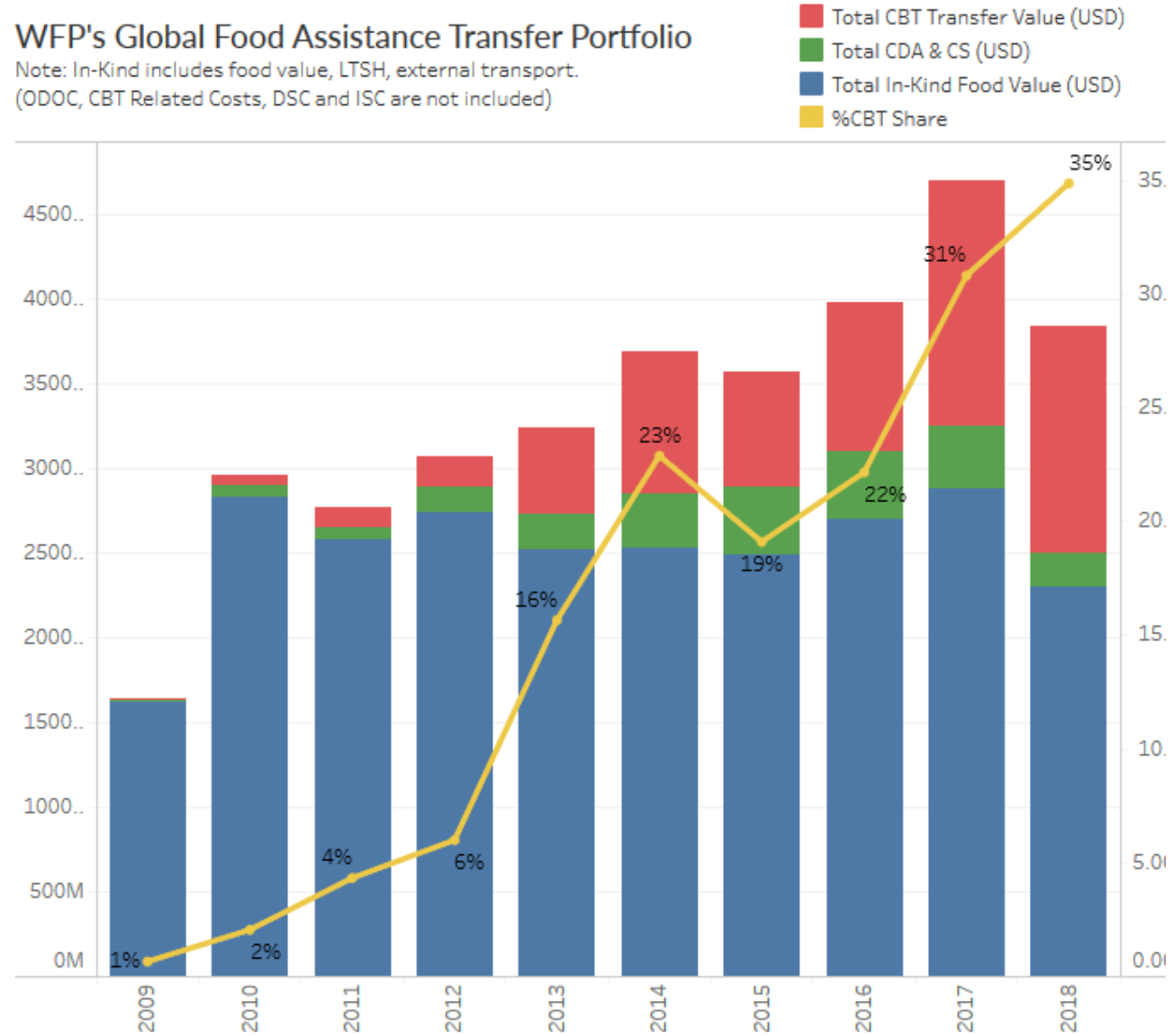
SAVING
LIVES
CHANGING
LIVES

8 March 2019

WFP Office of Evaluation

WFP's Global Food Assistance Transfer Portfolio

Note: In-Kind includes food value, LTSH, external transport.
(ODOC, CBT Related Costs, DSC and ISC are not included)



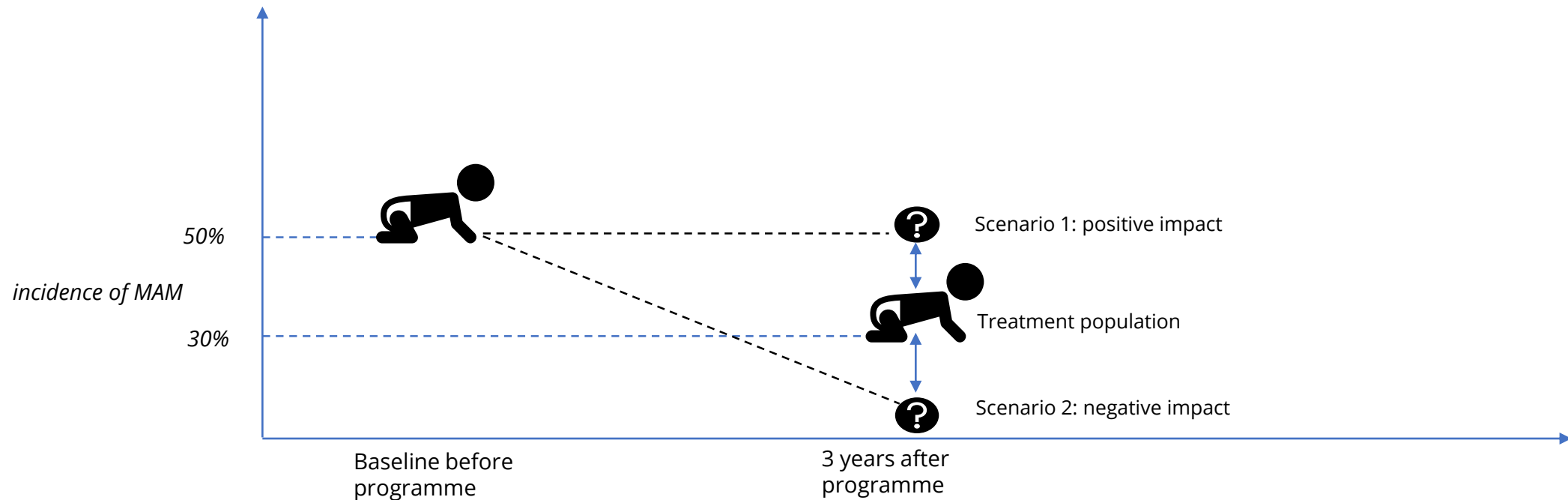
Presentation Overview:

1. What is an impact evaluation?
2. Overview of impact evaluation in WFP
3. WFP's evolving impact evaluation strategy
4. Pillars of WFP's impact evaluation strategy
5. Intended benefits of this impact evaluation window
6. Expected evidence from the cash-based transfers and gender window
7. Characteristics of an impact evaluation window
8. WFP impact evaluation window partners
9. Other ways for partners to get involved

What is an impact evaluation?

Example question from the Moderate Acute Malnutrition (MAM) series:

What is the impact of MAM prevention interventions on the incidence of MAM in under 2 year olds under different levels of access to MAM treatment?

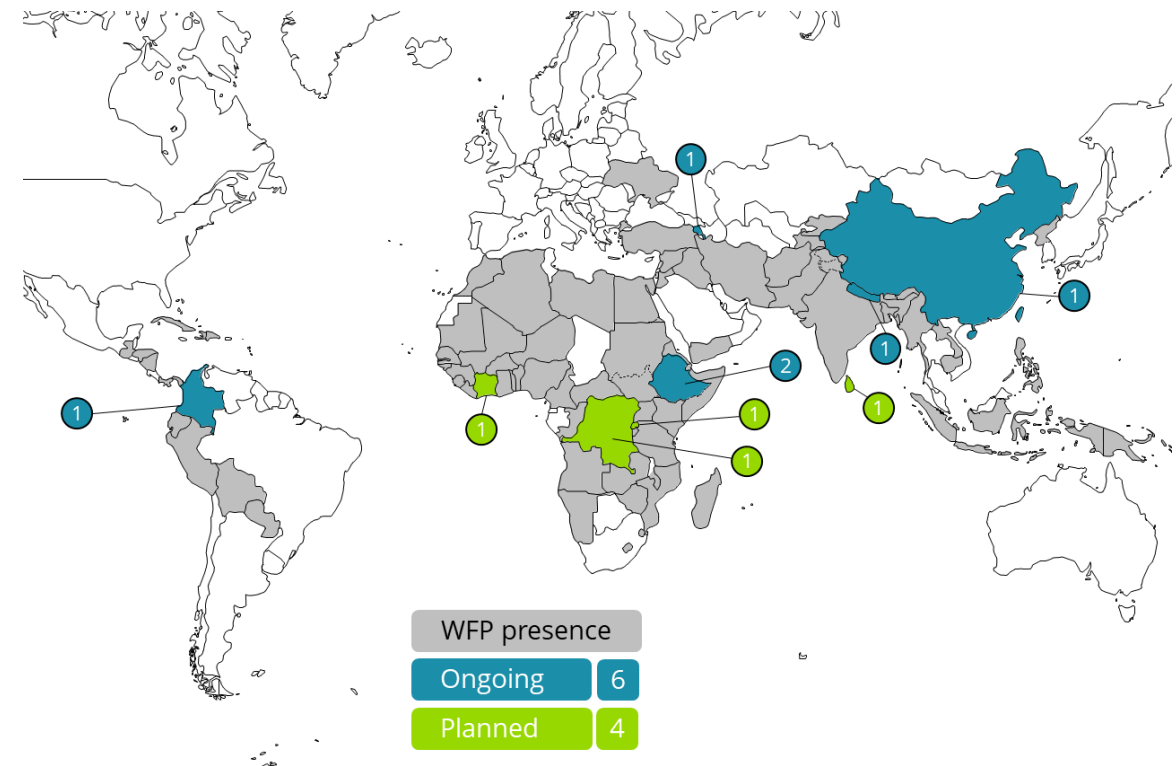


Overview of impact evaluation in WFP:

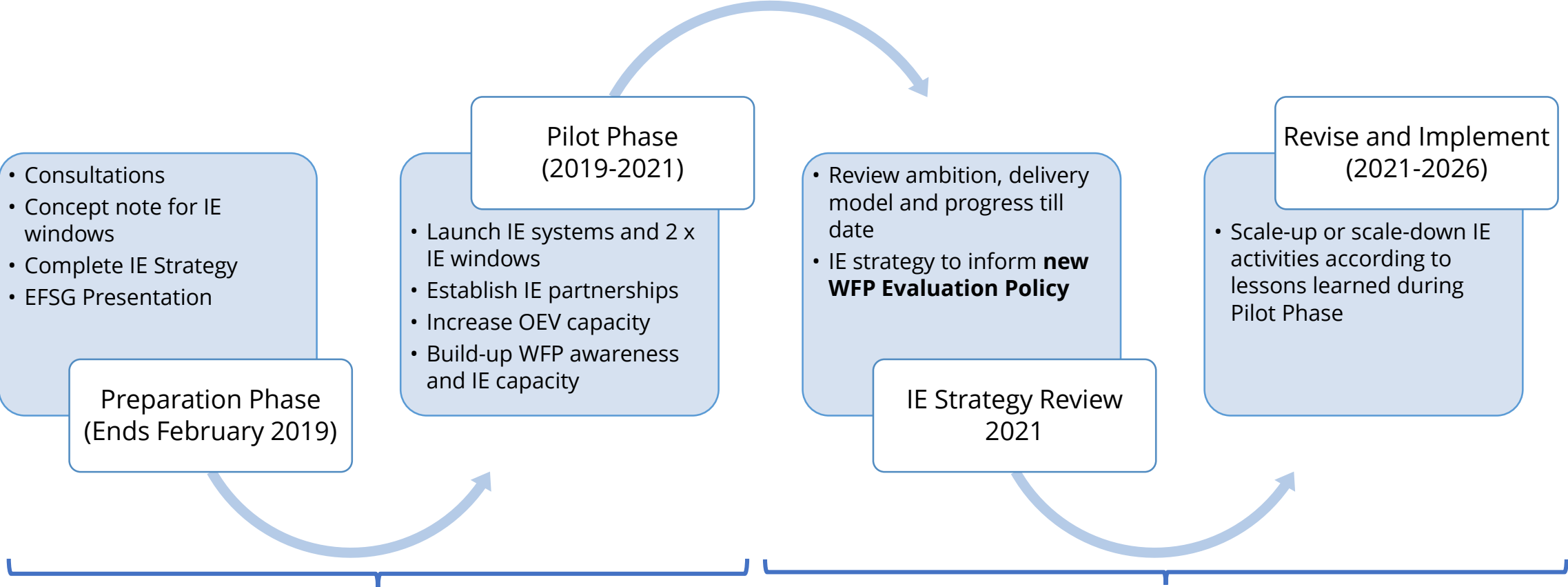
Centralized WFP impact evaluation series:

- 2005-2011: School Feeding Series (9 IEs)
- 2011-2012: Food Assistance to Refugees in Protracted Situations (FARPS) Series (4 IEs)
- 2013: Food Assistance for Assets (FFA) Series (6 IEs)
- 2014-2018: Moderate Acute Malnutrition (MAM) Series (4 IEs)

Decentralized impact evaluations:



WFP's evolving impact evaluation strategy:



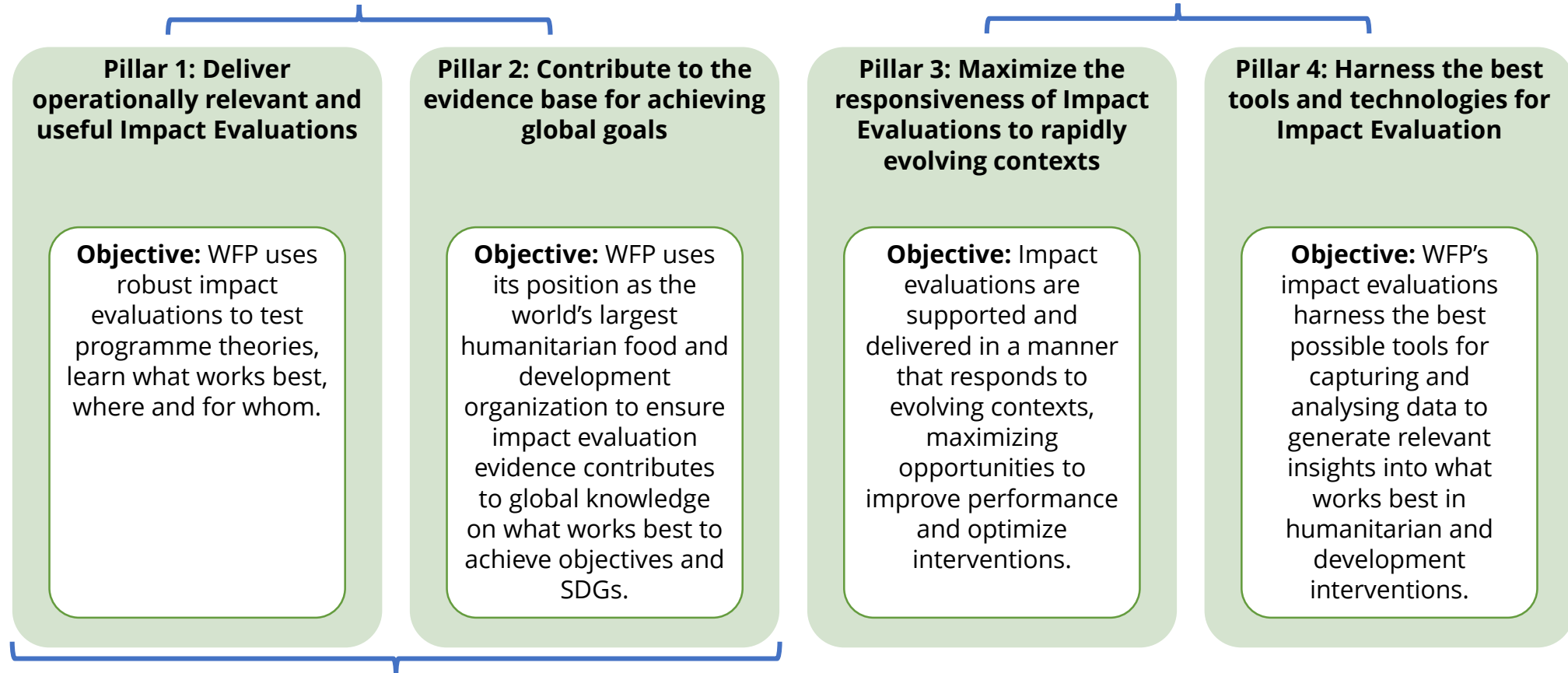
Pilot phase sits alongside current evaluation policy and strategy

IE strategy embedded into new evaluation policy and new strategy

Pillars of the draft impact evaluation strategy:

Focus of IE activities

How we want to deliver IEs



Windows are one way OEV will generate demand for impact evaluations in WFP priority areas

Intended benefits of this impact evaluation window:

- Timely production of **rigorous evidence** around key questions of country programming;
- More effective, efficient, equitable and **empowering programming** that supports sustained change;
- Information to **improve outcomes** in future programming;
- Valuable and compelling material for **current and future funding and implementing partners.**

Capacity strengthening:
Opportunities for national
capacity building in
impact evaluation

Evidence sharing:
understanding what
works best, where and for
whom?

Expected evidence from the cash-based transfers and gender window:

Examples of potential cross-cutting evaluation questions include:



Evaluation Synthesis: results from individual evaluations will be compared and combined to test whether interventions work in different contexts.

Characteristics of an impact evaluation window:

OEV managed

- OEV will manage all window activities in partnership with the World Bank DIME unit;

WFP-programme supported

- window is developed in collaboration with CBT Programme Teams and the Gender Office. Individual impact evaluations will be demand-led from Country Offices;

Co-funded

- OEV covers all costs associated with window impact evaluations except for data. Programme and donor funding is needed for data collection;

Timing

- the window will remain open until sufficient evidence is generated to meet WFP and partner needs.

WFP impact evaluation partners and potential roles:

Country Offices and programme delivery partners

- Use impact evaluation evidence
- Sources of programme theory to be tested
- Deliver interventions evaluated and influence evidence priorities

Government partners in countries with WFP operations

- Use impact evaluation evidence
- Deliver interventions evaluated and influence evidence priorities
- Deliver impact evaluations with WFP support (NECD)

WFP funding partners

- Use impact evaluation evidence
- Influence WFP priorities and finance impact evaluation activities

Evaluation and research partners

- Support to window setup and design
- Sources of academic theory and IE methods
- Deliver impact evaluations

Other ways for partners to get involved:

Joint learning: OEV is actively seeking partners interested in testing and improving methods for measuring and identifying gender equality and women's empowerment outcomes related to cash-based transfers;

Window funding: Direct funding for the cash-based transfers and gender impact evaluation window will enable smaller Country Offices and programmes to participate, even if their M&E budget is limited;

Thank you