

## The 3 Rome-based Clusters

Logistics (WFP)  
ETC (WFP)  
Food Security (FAO & WFP)

**Making a  
difference in  
today's crises**

# THE LOGISTICS CLUSTER

---

A community of 606 partners coordinating, exchanging and collaborating to overcome the most challenging logistics constraints and deliver aid in the world's hardest-to-reach environments.

# WHERE WE WORK



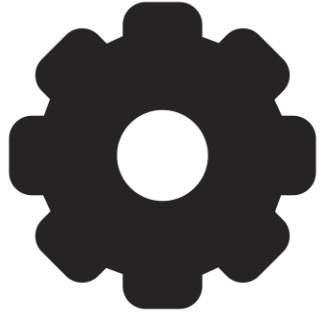
**7 CLUSTER OPERATIONS**

**3 SECTOR OPERATIONS**

**4 PREPAREDNESS OPERATIONS**

# LOGISTICS CLUSTER IN OPERATION

---



## COORDINATION

---

*A liaison between humanitarian actors*

## INFORMATION MANAGEMENT

---

*Awareness comes from information*

## FACILITATON OF COMMON SERVICES

---

*Shared resources for a common operation*



# BUILDING A STRONGER RESPONSE

---

Thought leader driving new ideas and innovation  
Building local supply chain resilience  
Strengthening the humanitarian community's ability to respond





# Emergency Telecommunications Cluster

---



Technology for a changing humanitarian landscape.





# Who we are

---



The ETC is a global network of humanitarian, government and private sector organisations working together to provide shared communications services in humanitarian emergencies.





# Who we serve

---



HUMANITARIANS



GOVERNMENTS



AFFECTED  
COMMUNITIES



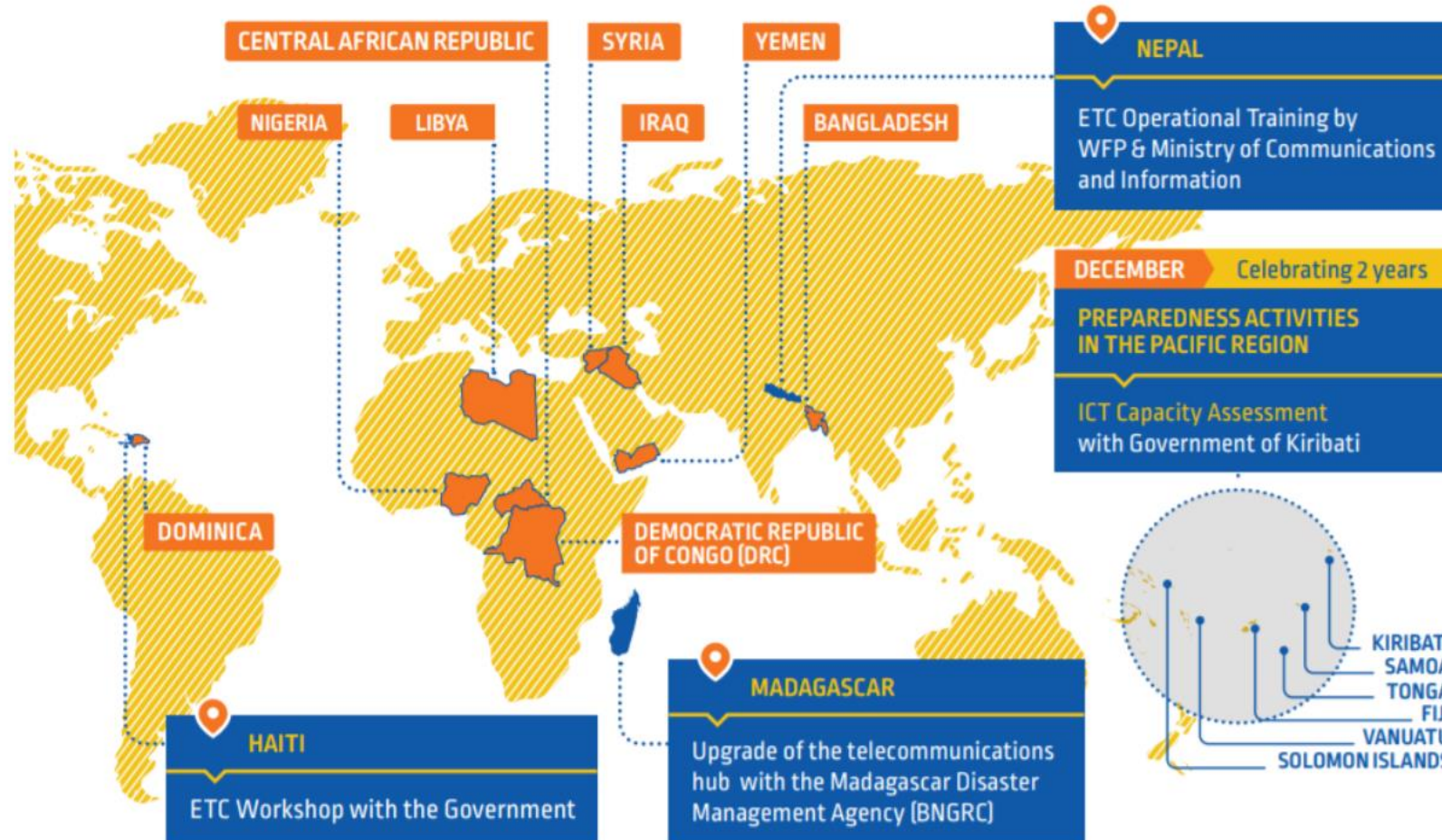
# Where we worked in 2018



ETC WAS ACTIVE IN  
**18 COUNTRIES**

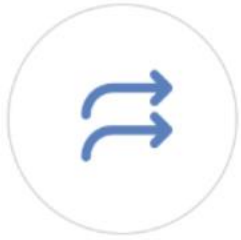
**EMERGENCY RESPONSE  
IN 9 COUNTRIES**

**PREPAREDNESS  
IN 9 COUNTRIES**



# What we do

---



Emergency response



Preparedness



Coordination



Information  
management



Security  
communications



Customer support



Unmanned Aircraft  
Systems (UAS)  
Coordination



ETC Services for  
Communities (S4C)



Training



Simulations





# FOOD SECURITY CLUSTER

*FOOD SECURITY  
FOR HEALTHY  
AND ACTIVE LIVES*

[www.fscluster.org](http://www.fscluster.org) | [info@fscluster.org](mailto:info@fscluster.org)



- The Food Security Cluster (FSC) was established to **coordinate the food security response during a humanitarian crisis**, addressing issues of food availability, access and utilization.
- Food Security Cluster coordinates partner responses to ensure that planning and implementation of responses avoid gaps and duplications, and are comparable and timely to affected populations.

FSC IS CO-LED BY:



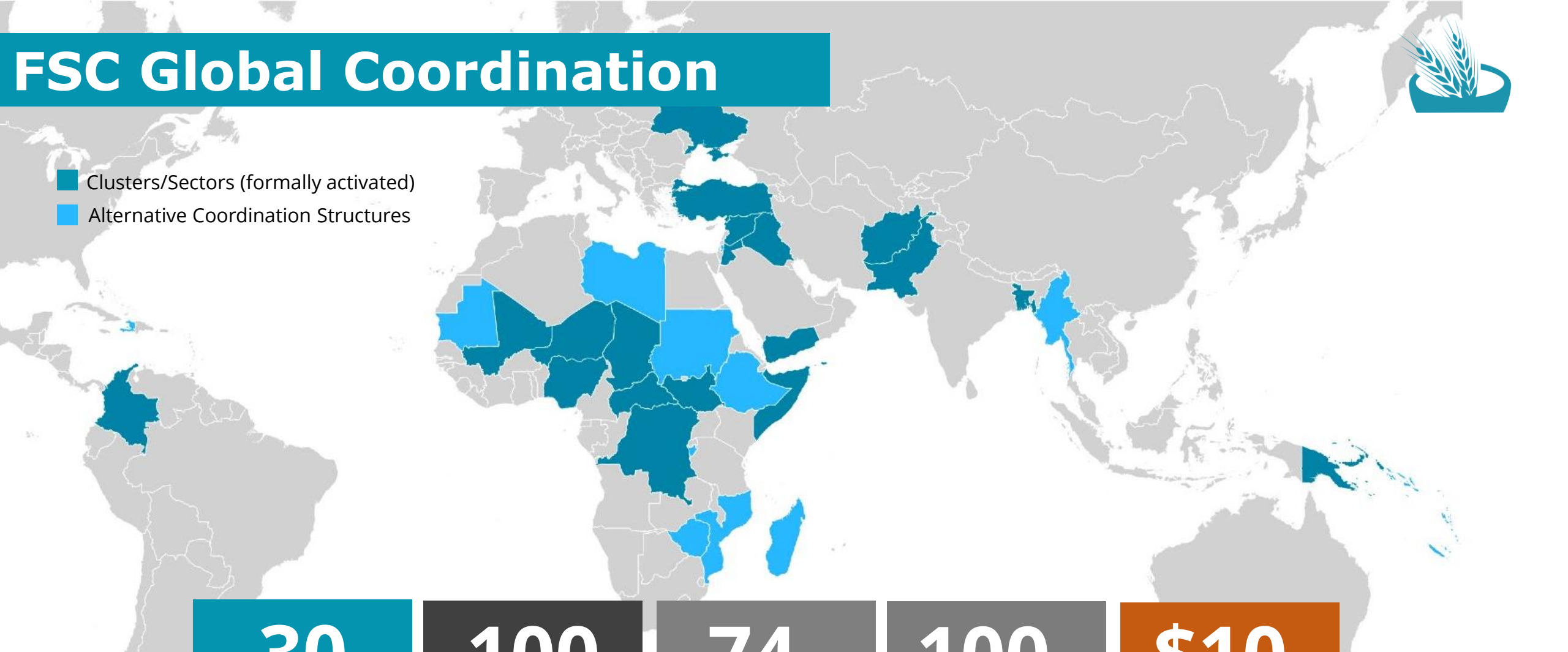
**Food and Agriculture  
Organization of the  
United Nations**



# FSC Global Coordination



- Clusters/Sectors (formally activated)
- Alternative Coordination Structures



**30**  
Active  
Clusters/Sectors

**100**  
Deployed Staff  
Globally

**74<sub>M</sub>**  
People  
Targeted

**100<sub>M</sub>**  
People  
In Need

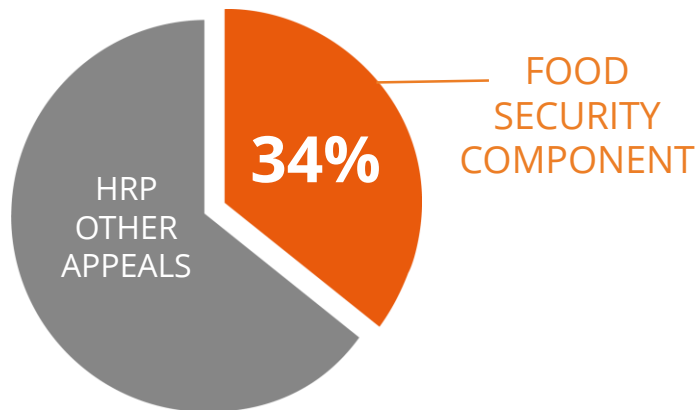
**\$10<sub>B</sub>**  
Food Security  
Global Funding  
Requirement

# FSC Key Facts



Food Security is accountable for 34% of the total HRP global funding requirement.

The food component is the largest percentage of any other sector.



63  
Global  
Partners

1,700  
in-country  
Partners





Humanitarian-  
Development  
Nexus



## **Food assistance**

general food distribution, cash based transfers (incl. vouchers), food for assets, food for work

---

## **Agriculture and livelihoods**

Agricultural inputs (seeds, tools), livestock, fisheries (including aquaculture)

---

## **Rehabilitation/building of productive infrastructure**

rural institutions, ag. land, markets, social and financial systems, trainings

---

## **Nutrition**

Nutrition-sensitive food security interventions in coordination with the Nutrition Cluster

# FSC Activities

