

CHILD'S NAME

AGE (YEARS) 18 months

CAREGIVER'S NAME

SEX (M/F) male

SITE NAME

maper TSF work Duf

PAYAM alyalath

ADMISSION DATE (DD/MM/YY)

16/8/17

VILLAGE / BOMA Titadol

DISCHARGE DATE (DD/MM/YY)

CHIEF / SHEIKH Akot ya

visit	Date (DD/MM/YY)	MUAC (mm)	Height (mm)	Weight (kg)	WFH (z-score)	Treatment given	Plumpy Sup Sachets (#)	CSB++ (kg)	CSB+/Premix (kg)	Referral to OTP	Comment
Admit	15/8/17	11.7	-	6.9	-	-	-	3kg	-	Net	
2	30/8/17	11.9		6.7	-	-	-	3kg	-		
3											
4											
5											
6											
7											



Humanitarian assistance card

SCOPE

MAPS



CO-RESPONSABILITY

Food distribution 2017...
Medical examination 20...

Program: MAM, in progress: still eligible
Age: 2 years 0 months
Weight: 6 kg
Height: 68.6 cm
EDEMA: No
MUAC: 12.2
HFA: -6.06
WFA: -4.18
WHI: -2.58

HOME



WFP Digital Journey



1
Context

2
Assessment
& Analysis

3
Programme
Formulation

4
Programme
Implementation

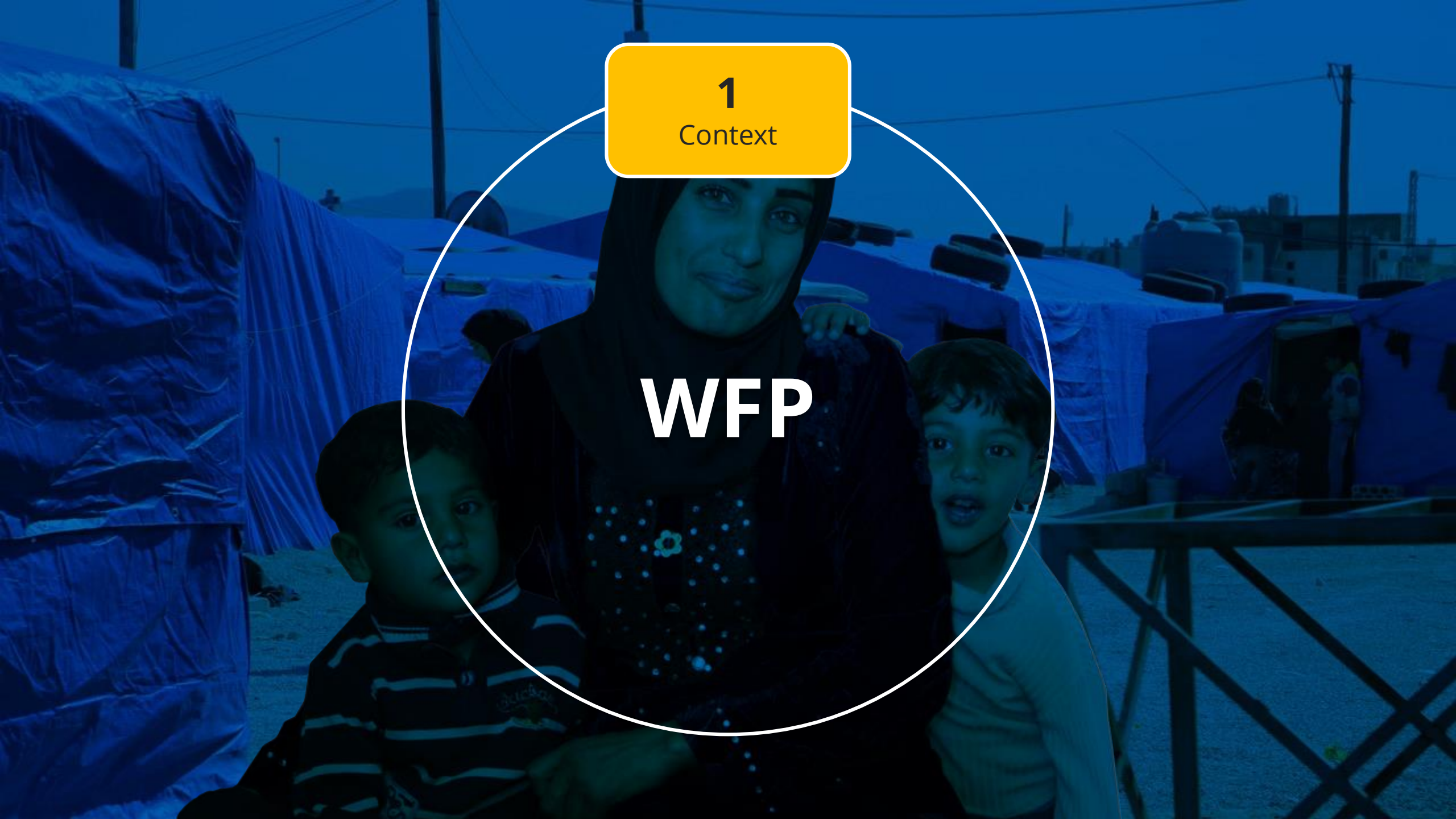
5
Monitoring
& Evaluation

WFP

1

Context

WFP





1

Context



1

Context

1

Context

WFP

2

Assessment
& Analysis

2

Assessment & Analysis

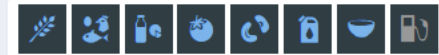


2

Assessment & Analysis

- Prices
- Price Forecasts & Alerts
- Macro-Economics
- Currencies - Global
- Contact Us

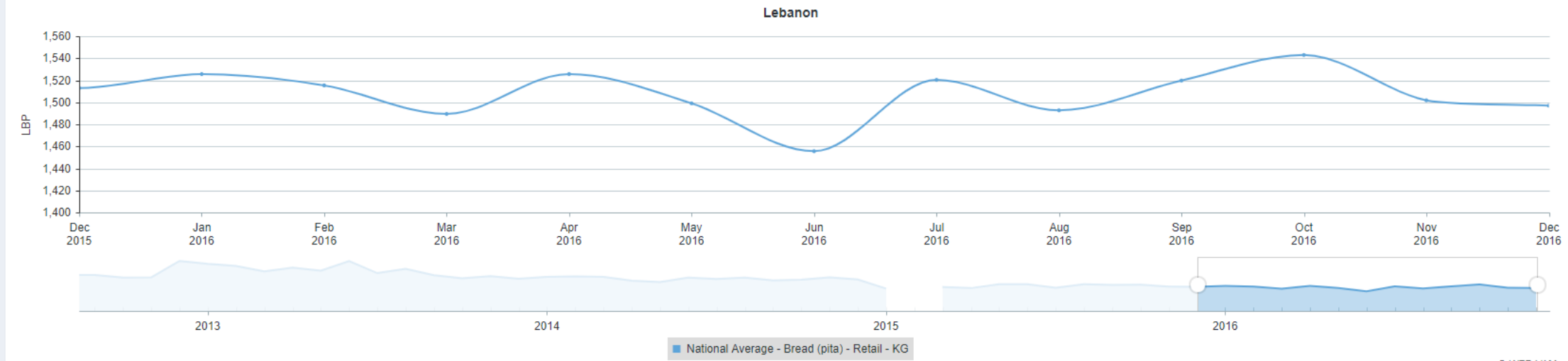
Lebanon Select Markets



Reset Commodities

Food Prices

1 Year 3 Years [Download] [Print]



2

Assessment & Analysis



1

Context

WFP

2

Assessment
& Analysis

3

Programme
Formulation



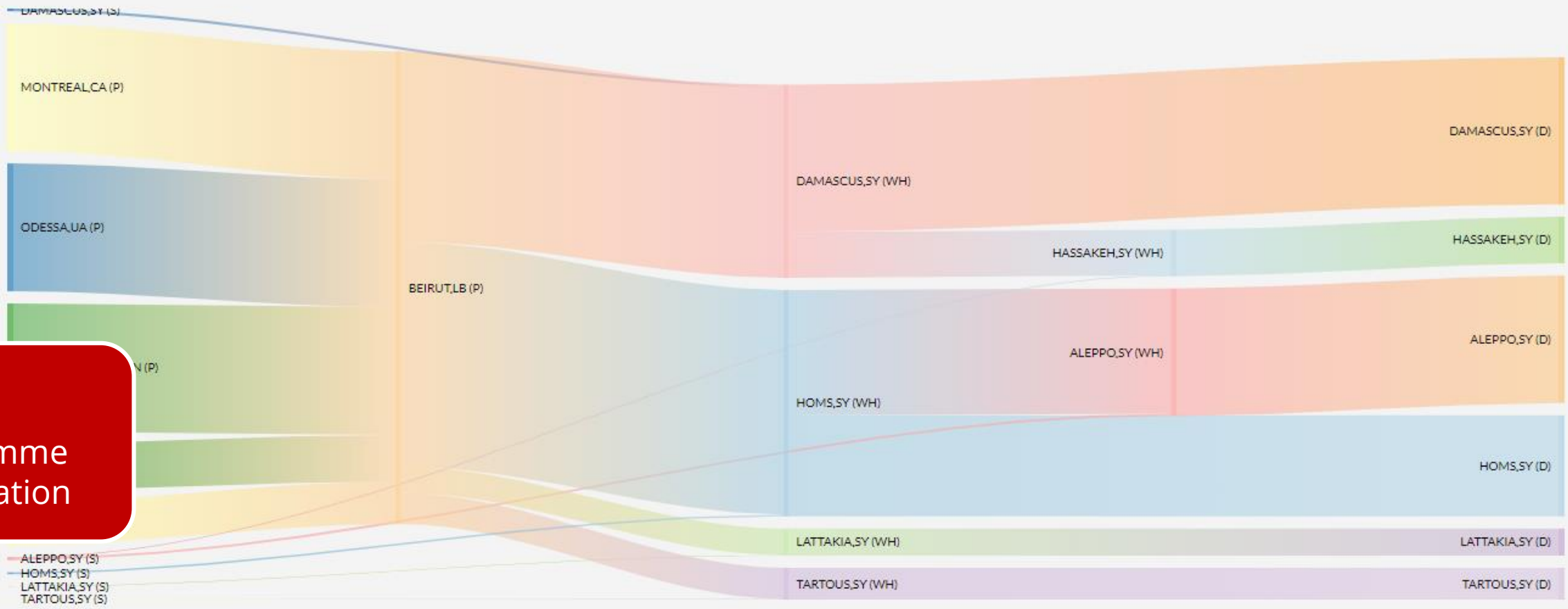


3

Programme
Formulation



3
Programme
Formulation





1
Context

2
Assessment
& Analysis

3
Programme
Formulation

4
Programme
Implementation

WFP



4

Programme Implementation

4
Programme
Implementation





4

Programme
Implementation



4

Programme
Implementation



1
Context

2
Assessment
& Analysis

3
Programme
Formulation

5
Monitoring
& Evaluation

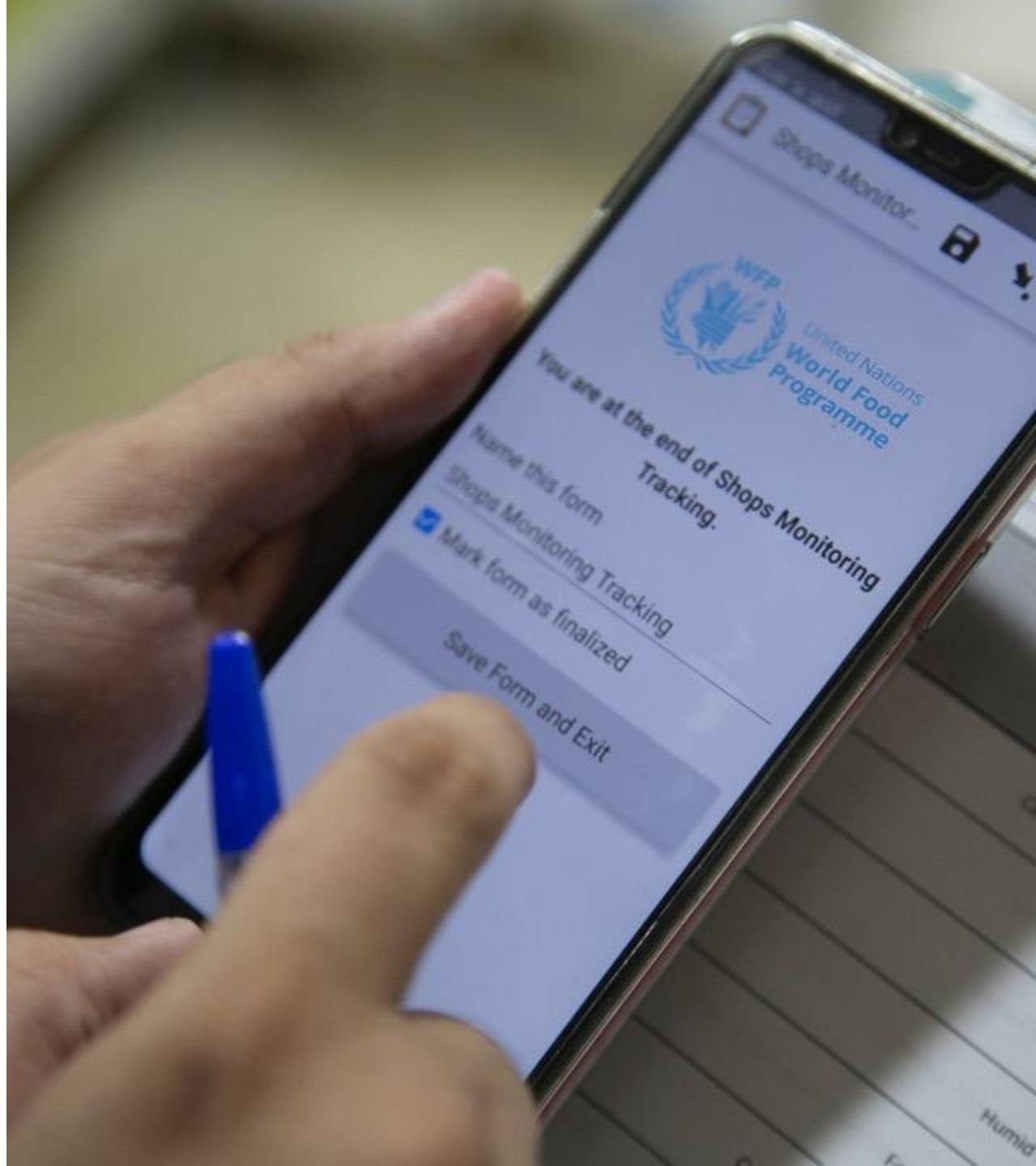
4
Programme
Implementation

WFP



5

Monitoring
& Evaluation





1
Context

2
Assessment
& Analysis

3
Programme
Formulation

5
Monitoring
& Evaluation

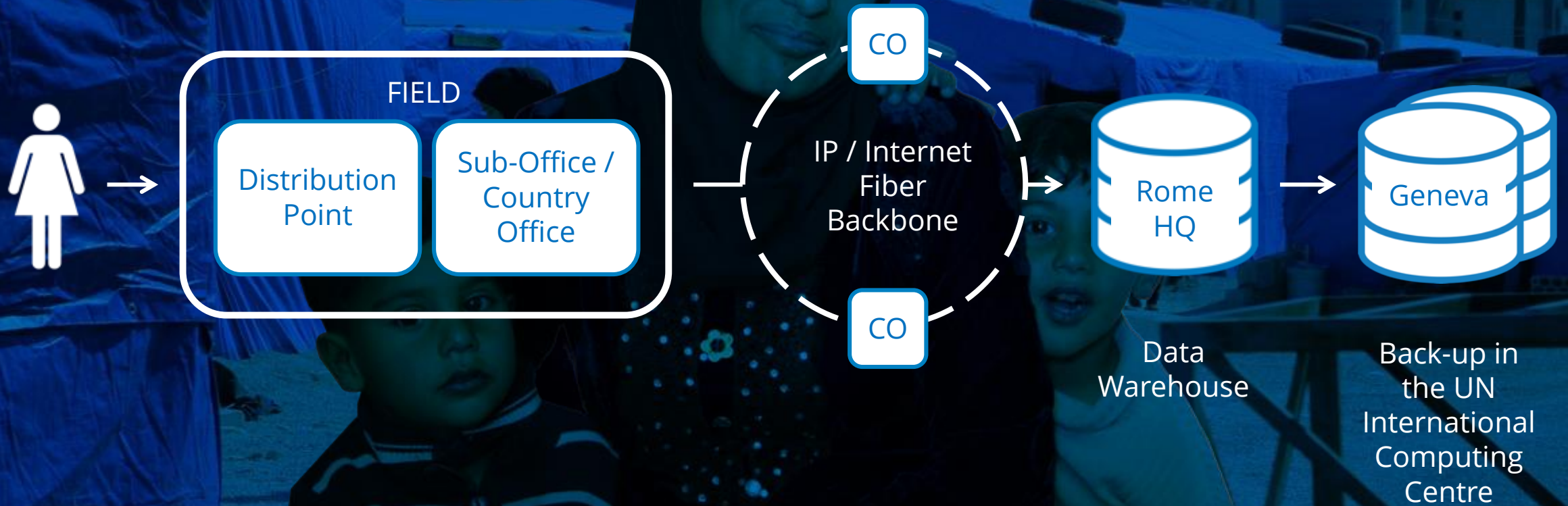
4
Programme
Implementation

WFP



WFP Data Journey

WFP Data Journey



WFP Data Protection and Security



WFP Data Protection and Security





Personal Data Protection and Privacy

Principles

1. Lawful and fair collection and processing
2. Specified and legitimate purpose
3. Data quality management
4. Participation and accountability
5. Ensuring data security

Data Assurance

1. Access controls and segregation of duties
2. Data encrypted on collection, transmission and storage
3. Dedicated data protection staff
4. Data securely hosted and backed-up in UN data centres
5. Un-utilised personal data archiving and removal planned

WFP principles are in alignment with the UN principles

So What: What's the True Benefit of this CCI Investment?

People We Serve

Digital ID, empowerment, dignity, financial inclusion to the global economy

Protection & Security

Protect personal sensitive information with state-of-the-art security

System Capability

Multi-modality, scalable, 1+1 redundancy, with no single point of failure

Ecosystem

Interoperable digital cash platform for all (e.g. Donors, Host Govt. UN Agencies)

