

World Food Programme

Saving lives. Changing lives

September 2018



World Food Programme

1

Who we are

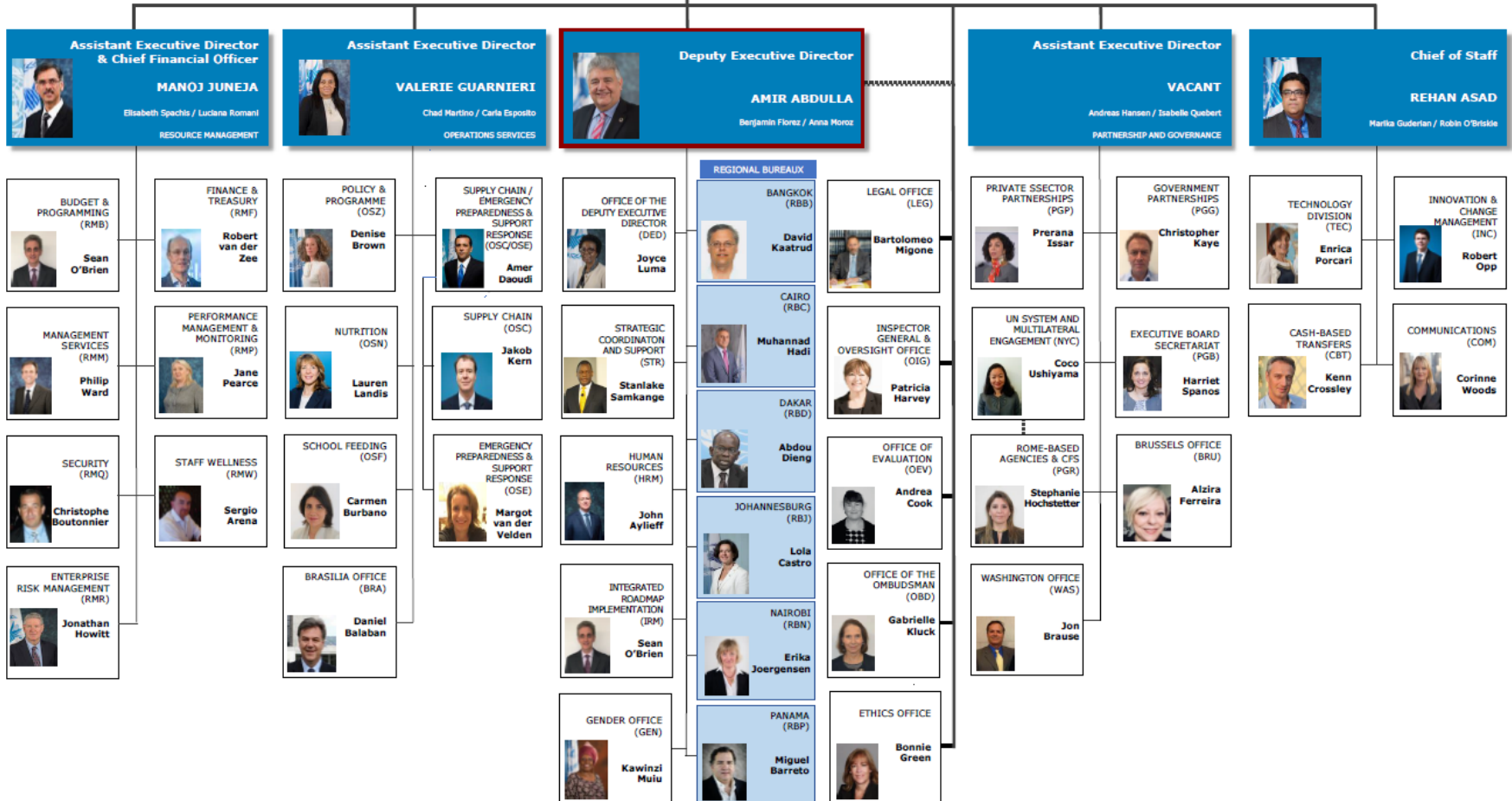
Global Headquarters Management

WFP



EXECUTIVE DIRECTOR
David Beasley
Louise Potts

Headquarters Management



The WFP workforce

- **16,623** staff
- **82 percent** from developing countries
- **78 percent** locally recruited



2

Where we work

WFP's global presence in 2018

WFP

SAVING LIVES
CHANGING LIVES

WFP Global Presence



- Country Office
- Regional Bureau
- Rome Headquarters
- WFP Office
- Centre of Excellence
- Humanitarian Response Depot

- Asia & the Pacific Regional Bureau
- Middle East, North Africa, Eastern Europe and Central Asia Regional Bureau
- West Africa Regional Bureau
- Southern Africa Regional Bureau
- Eastern & Central Africa Regional Bureau
- Latin America & Caribbean Regional Bureau

September 2018

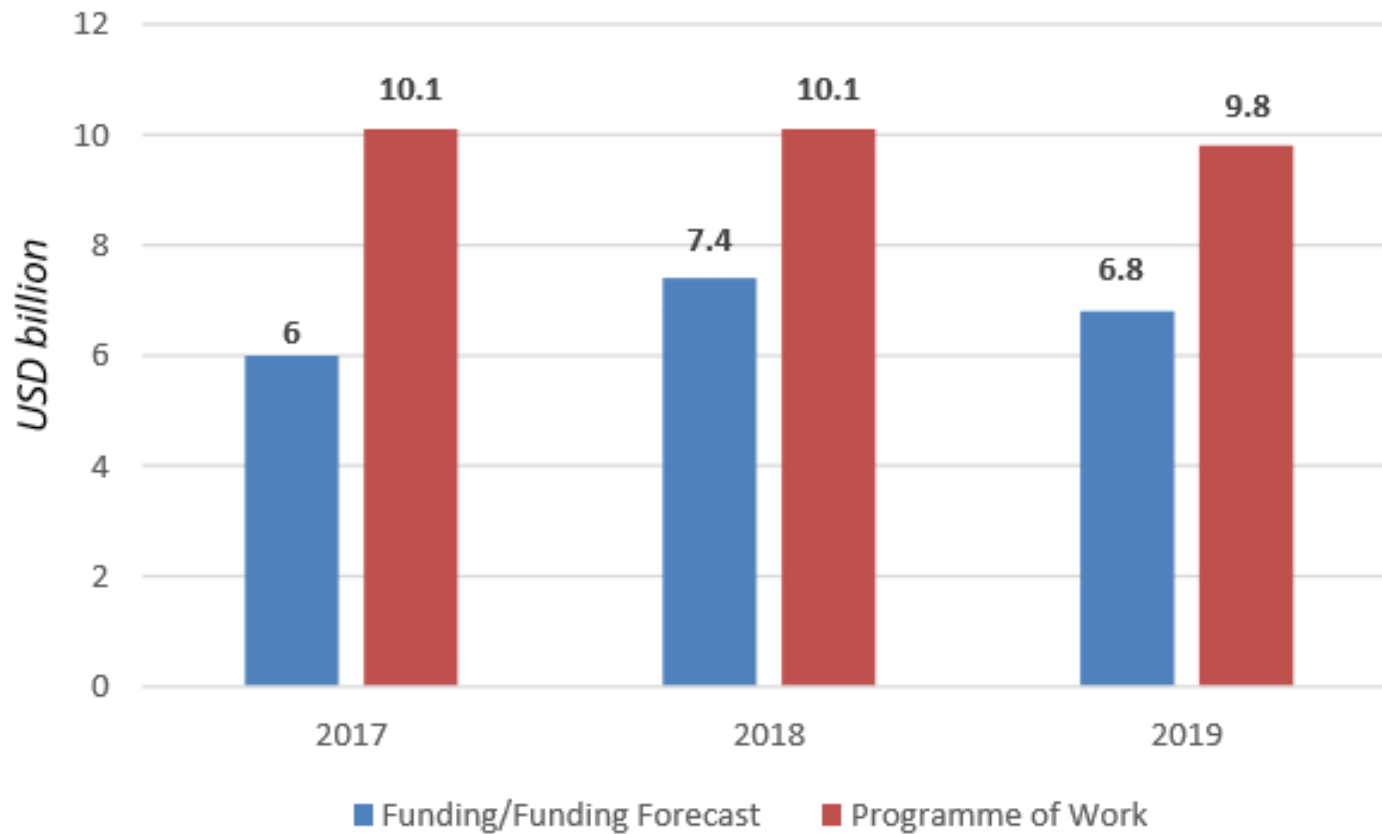
© 2018 World Food Programme. The information contained in this document is available on a non-exclusive basis for the purpose of providing information to the public. It is not intended to be used for any other purpose. The World Food Programme and its staff are not responsible for any errors or omissions. The information contained in this document is not intended to be used for any other purpose. The information contained in this document is not intended to be used for any other purpose.

3

Funding – Heightened needs

Contribution revenue 2017-2019

WFP



4 What we do

Five Strategic Objectives

End Hunger
by protecting access to
food

1

Improve
Nutrition

2

Achieve
food security

3

Support
SDG
Implementation

4

Partner for
SDG results

5



Thematic areas that will shape our operations in 2018

WFP



**Emergency and
Transition Programming**



**Social Protection and
Safety Nets**



**Food Security and Joint
Assessments**



**Climate and
Disaster Risk
Reduction**



**Market Access
for Smallholder
Farmers**



**South-South
& Triangular
Cooperation**



**Monitoring &
Reporting**

- **91.4** million people directly assisted in **83 countries**
- **3.9 million tons of food** distributed by WFP, valued at **USD 2.2 billion**
- **18.3** million children received school meals/take home rations
- **16.3** million children and mothers received specialized nutrition support
- **660,000** school children were fed in Syria alone

Cash-based transfers 2017

- **19.2 million** people received cash assistance
- **USD 1.4 billion** distributed in cash
- **61** countries where WFP distributed cash
- **30 percent** is the share of cash within WFP's assistance portfolio



Building resilience – food assistance for assets

- **1,255,000 m³** volume of dams constructed
- **219,000 hectares** of land and forests planted or rehabilitated
- **17,000 km** of roads built or repaired
- **3,200** water wells dug
- **500** bridges built or restored



- WFP works in close collaboration with **Host Governments**
- WFP partners with multiple **UN, especially the Rome-based agencies (FAO and IFAD)** and **donor** agencies
- **869** Cooperating Partners, including NGOs, partner with WFP
- **137** small to medium private sector partners engaged in cash distribution
- **102** private sector corporations and foundations worked with WFP

Supply chain footprint

WFP

WFP has greater **procurement**, **logistical** and **delivery** capacity to the world's most vulnerable people than any other humanitarian organization

On any day WFP is managing:

- 5,000 trucks
- 70 aircraft
- 20 ships
- 650 warehouses



Vulnerability Analysis and Mapping (VAM) combines traditional assessment methods with innovative technologies to establish the underlying causes of food insecurity, including:

- **Food security assessments** through Comprehensive Food Security and Vulnerability Analyses (CFSVA) and Emergency Food Security Assessments (EFSA)
- **Market assessments** analyze the impact of higher food prices on households' food security situations
- **mVAM** allows for food security surveys and high frequency data collection by mobile phone to monitor situation in remote or dangerous locations
- **Geospatial Analysis** of real-time seasonal forecasts to highlight developments of human concern

- **United Nations Humanitarian Air Service** (UNHAS)
- **UN's humanitarian warehouse hubs** (United Nations Humanitarian Response Depots) in six locations around the world
- **Provision of logistics services** directly to the humanitarian community, e.g. inter-agency warehouses, transport services and civil military coordination during Hurricane Matthew response in Haiti
- Coordination of **logistics operations** for the humanitarian community in major emergencies



Humanitarian cluster system

WFP

WFP is the coordinator (“cluster leader”) for the inter-agency humanitarian community in:

- **Food Security** (with FAO)
- **Logistics**
- **Emergency Telecoms**



Priorities that will guide WFP's work in 2018 in pursuit of Zero Hunger



- Leadership in emergency preparedness and response
- funding and partnerships for zero hunger
- digital transformation of WFP
- excellence in programme design and implementation
- simplification, efficiency and impact