

# World Food Programme Libya

## Interim Country Strategic Plan (2019 - 2020)



### CRISIS IMPACT

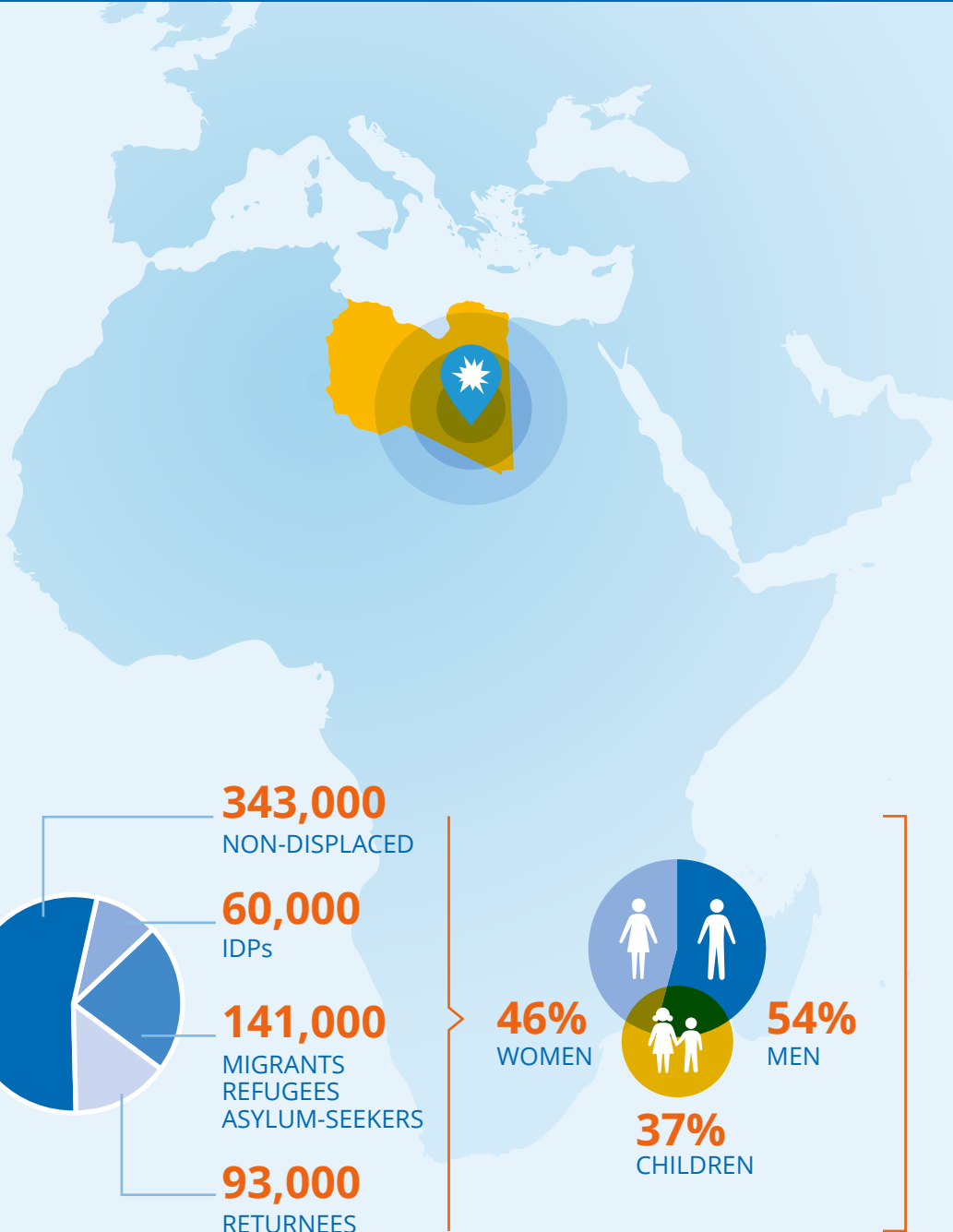
Almost 50% of the Libyan population\*

# 3,000,000

people



\*Libyan population: 6.5 million



### HUMANITARIAN NEEDS OVERVIEW

# 1,000,000

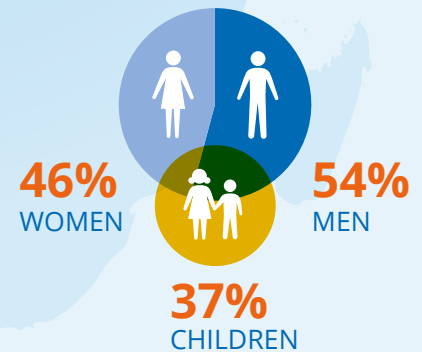
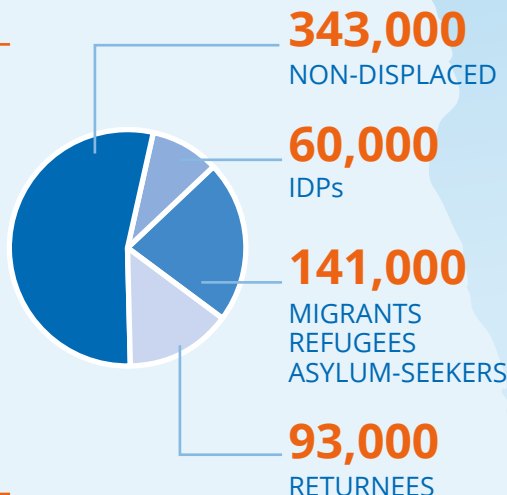
people

In need of assistance

# 637,000



Need food assistance



### SUSTAINABLE DEVELOPMENT GOALS (SDG)

SDG 2

ZERO HUNGER



By 2030, end hunger and ensure access by all people, in particular the poor and people in vulnerable situations, including infants, to safe, nutritious and sufficient food all year around.

SDG 17

PARTNERSHIPS FOR THE GOALS



Enhance the global partnership for sustainable development, complemented by multistakeholder partnerships that mobilize and share knowledge, expertise, technology and financial resources, to support the achievement of the sustainable development goals in all countries, in particular developing countries.

World Food Programme  
Libya  
2019 - 2020

The United Nations Country Team has developed a draft UN Strategic Framework for Libya (UNSF) 2019-2020 which is pending endorsement by the Libyan authorities.

# WFP STRATEGIC OUTCOMES (SO)

SO.1

CRISIS-AFFECTED VULNERABLE POPULATIONS HAVE ACCESS TO SUFFICIENT AND NUTRITIOUS FOOD

Activity 1



**PROVIDE ASSISTANCE TO FOOD-INSECURE AND VULNERABLE PERSONS**

and pilot complementary interventions that improve food security and nutrition.

## KEY OUTPUTS

Crisis-affected populations receive regular and timely food assistance

Through in-kind or cash-based transfers in order to meet their basic food and nutrition needs.

Children attending school in targeted areas receive nutritious meals

In order to meet their food requirements and support school attendance (SDG 4).

SO.2

VULNERABLE POPULATIONS HAVE STRENGTHENED LIVELIHOODS AND RESTORED ACCESS TO BASIC SERVICES

Activity 2



**PROVIDE LIVELIHOOD SUPPORT**

to vulnerable community and enhance national and local safety nets.

## KEY OUTPUTS

Vulnerable communities benefit from:

Food assistance

Through conditional in-kind or cash-based transfers to meet their food requirements.

Restored community livelihood assets and infrastructure

To increase community resilience and self-reliance.

Strengthened systems and capacities of local and national partners

To have access to adequate social safety nets.

SO.3

THE HUMANITARIAN COMMUNITY HAS STRENGTHENED CAPACITY TO ASSIST VULNERABLE POPULATIONS

Activity 3



**PROVIDE LOGISTICS CLUSTER SERVICES**

to humanitarian partners.

Activity 4



**PROVIDE AIR SERVICES FOR PERSONNEL AND LIGHT CARGO (UNHAS).**

Activity 5



**PROVIDE EMERGENCY TELECOMMUNICATIONS CLUSTER SERVICES**

to humanitarian partners.

## KEY OUTPUTS

Crisis-affected populations benefit from:

Enhanced capacity of humanitarian partners

Through logistics coordination and services.

Availability of humanitarian air services

For the safe transportation of humanitarian staff and the timely delivery of humanitarian assistance.

Enhanced capacity of humanitarian actors

Through upgraded telecommunications, information-sharing and knowledge management.

## WORLD FOOD PROGRAMME LIBYA

### OPPORTUNITIES

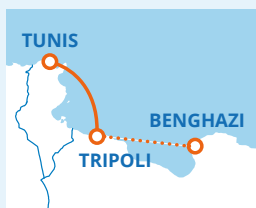
#### GRADUAL RE-ENTRY INTO LIBYA

**FEB 2018** UN evacuation status was lifted

**MAR 2018** WFP increased its operational presence with:

- ▶ Relocation of international staff
- ▶ Recruitment of national staff
- ▶ Opening of an office in **Tripoli**

**BEGINNING OF 2019** WFP plans to fully relocate from **Tunis** to **Tripoli** with the plan of expanding into **Benghazi**.



#### STRATEGIC CONTRIBUTION TO UN EFFORTS



The **ICSP**, aligned with the **UNSF** for the next two years, shapes **WFP's** contribution to collective **UN** efforts, including through the launch of **UNHAS** operations and the leadership of telecommunications and logistics clusters.

#### SHIFTING MODALITIES



**WFP** plans to gradually replace in-kind transfers with cash-based transfers (CBT) where applicable, contributing to stimulating the local economy while potentially mitigating security risks around delivery, particularly in conflict areas.

#### PREPARING FOR RECOVERY



Contingent on the relative stabilization of the situation in Libya, **WFP** will gradually introduce over the duration of the **ICSP** interventions that enable recovery. **WFP** will also pilot livelihood support activities in both rural and urban settings, which capitalize on women's ability to contribute to reconciliation and peace-building efforts.

## WFP LESSONS LEARNED & RESULTS TO DATE

**Preparedness and flexibility** are key to delivering life-saving assistance in a complex and unpredictable environment.

**Re-establishing full presence in Tripoli** and gradually in other parts of Libya are crucial for consolidating WFP's role as a key partner in Libya and achieving programme deliverables.

**Focusing on gender analysis** is key to better understanding the gender-related causes of food insecurity, the differentiated needs of women, men, girls and boys and designing the most appropriate responses.

**Working across the humanitarian-development-peace** nexus builds on the complementariness of partners for the achievement of joint objectives.



World Food Programme