

WFP Evaluation Function

EB Induction Session

15 January 2018

Andrea Cook, Director of Evaluation

WFP Office of Evaluation



World Food Programme



WFP Oversight Framework



2011 Oversight Framework & Reports Disclosure Policy



GOVERNING AND OVERSIGHT BODIES WITH MEMBERS STATES

UN General Assembly

FAO Conference

ECOSOC

FAO Council

ACABQ

FAO Finance Committee

Executive Board

Executive Board Bureau

INDEPENDENT EXTERNAL OVERSIGHT BODIES

Joint Inspection Unit

Audit Committee

External Auditor

WFP SECRETARIAT AND INDEPENDENT INTERNAL OVERSIGHT BODIES

Executive Director

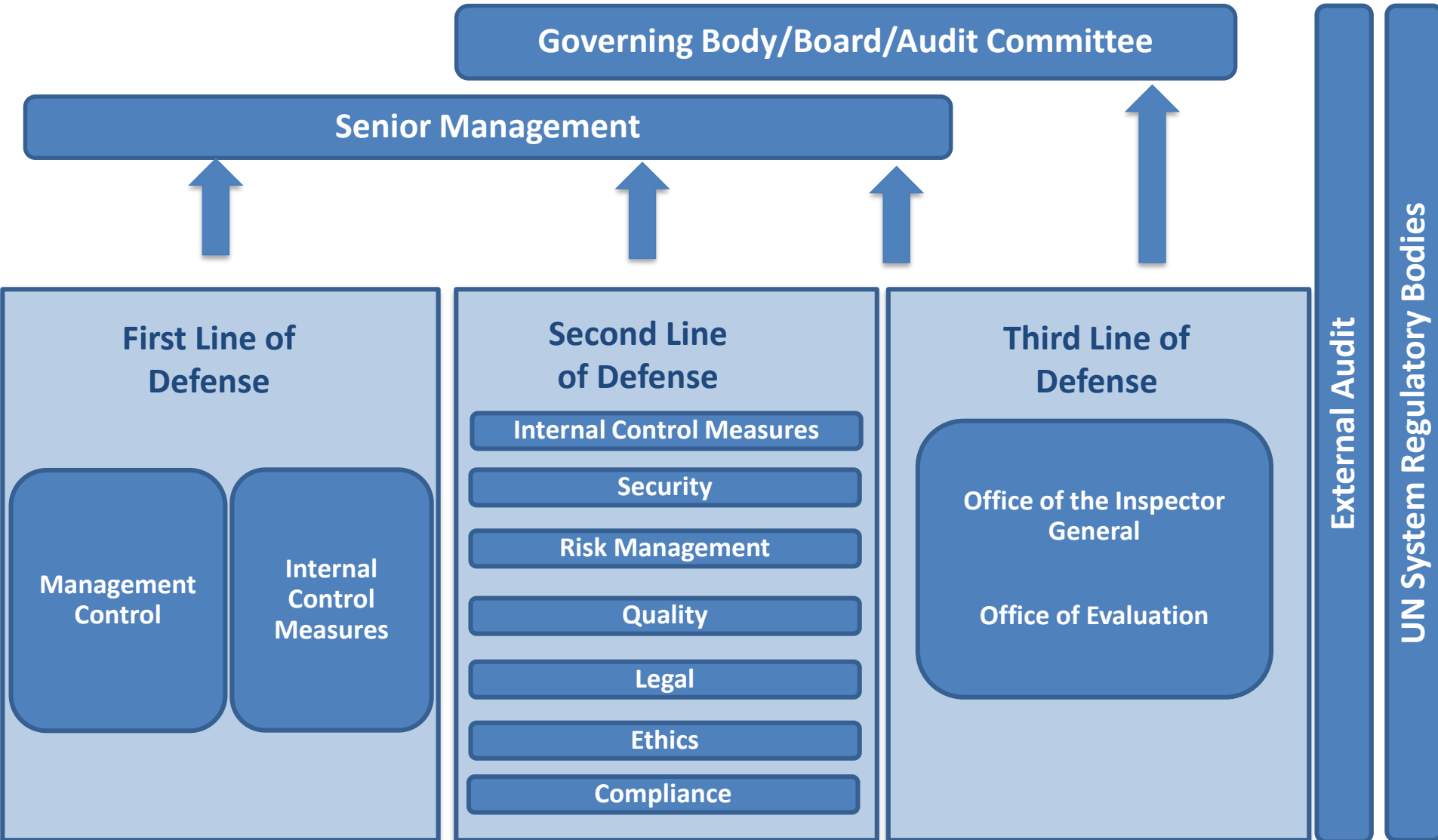
Oversight Office

Ethics Office

Management

Evaluation Office

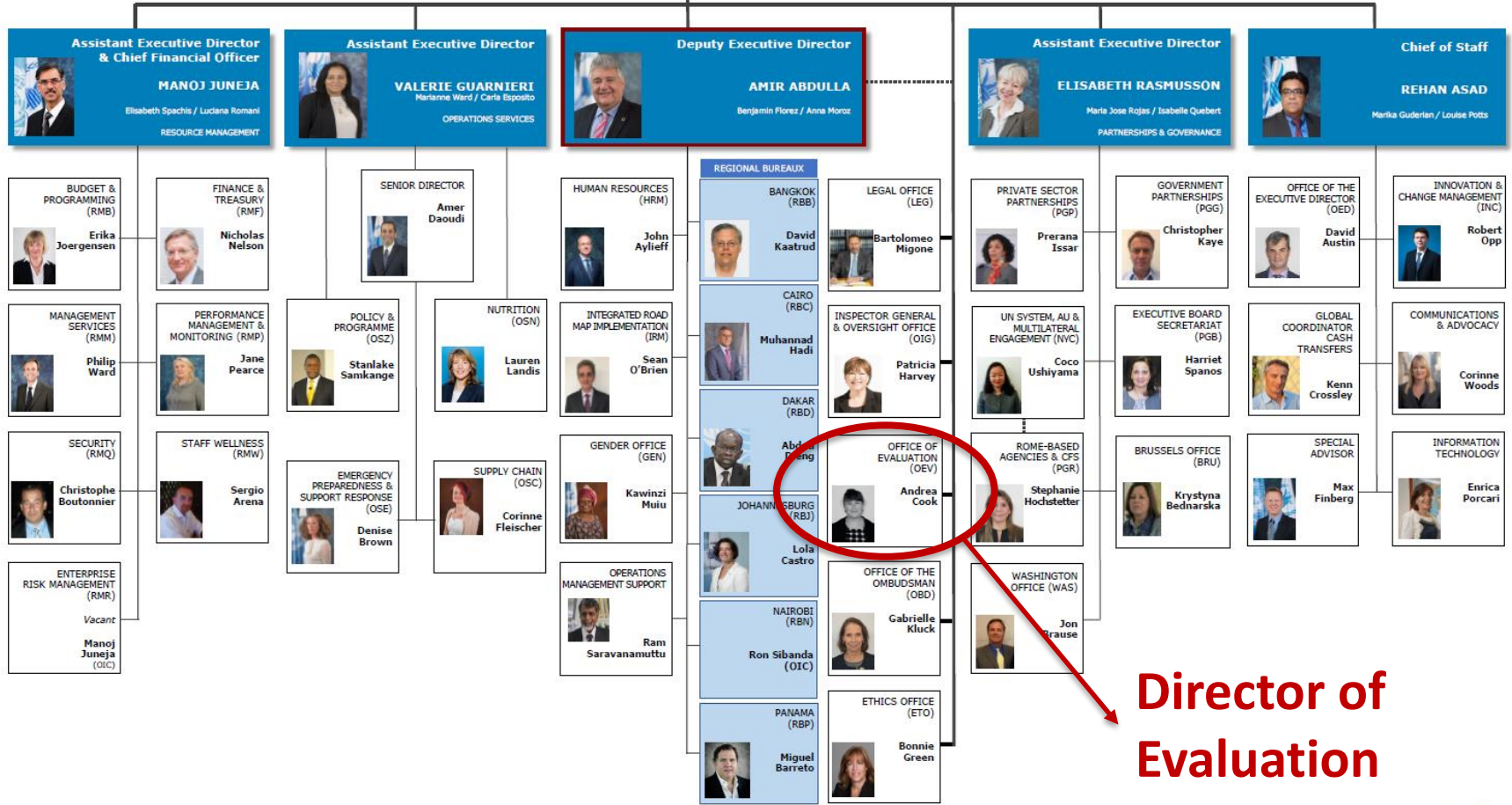
WFP's Three Lines of Defense model



WFP Organizational Structure



EXECUTIVE DIRECTOR
David Beasley
 Robin O'Briskie



Director of Evaluation



WFP Evaluation Function



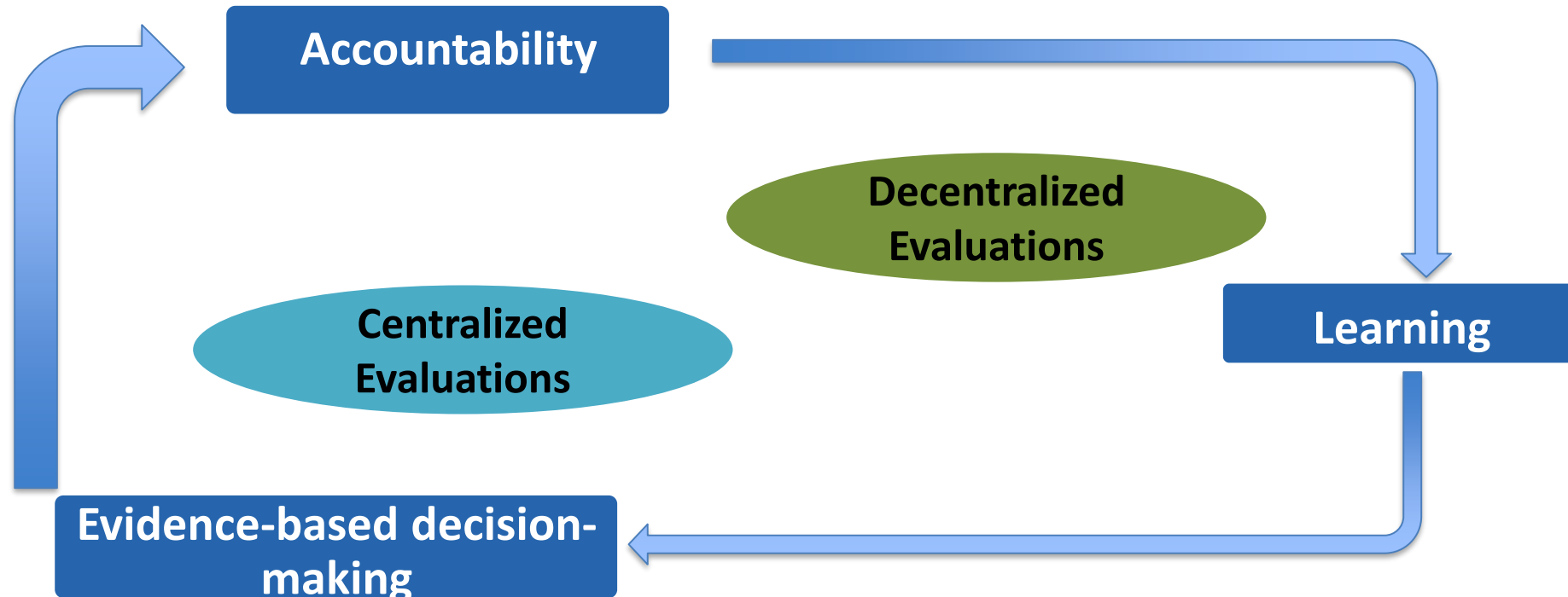
WFP evaluation function: Vision



What is evaluation in WFP?

The **systematic & impartial, periodic assessment** of the performance of WFP's activities, operations, strategies and policies.

(UN Evaluation Group/WFP 2016-2021 Evaluation Policy)



Evaluation Types & Categories

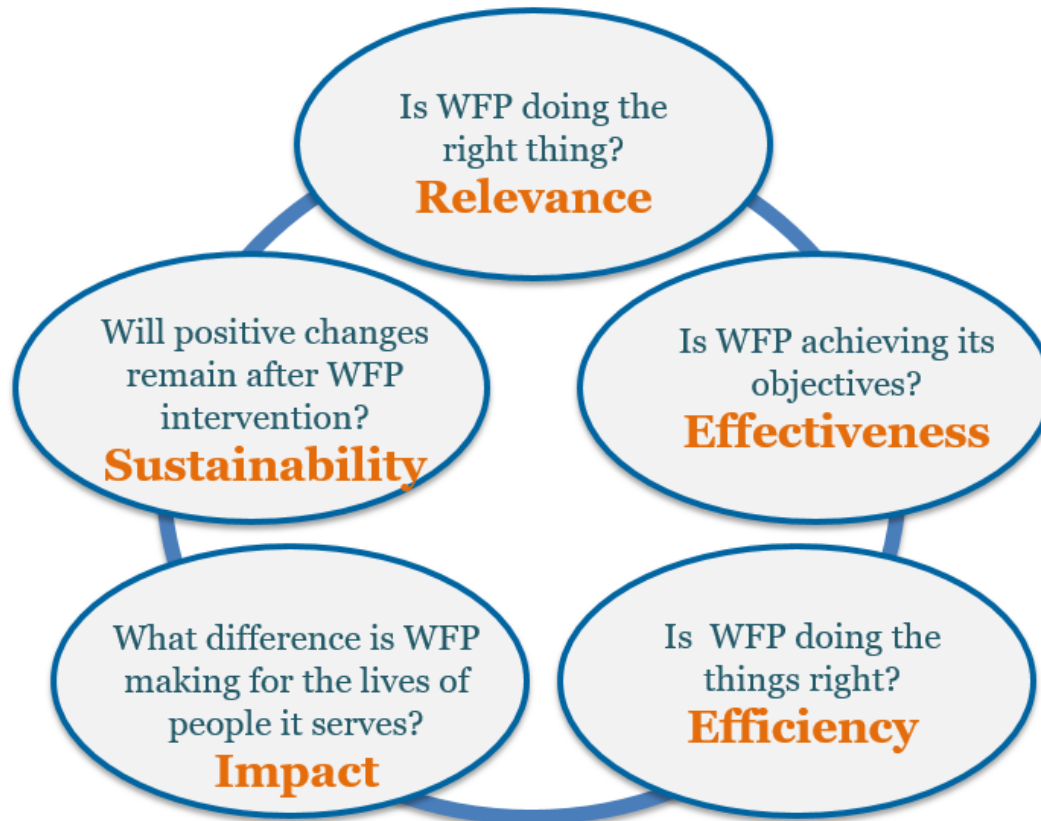
CENTRALIZED EVALUATIONS (OEV Managed)

- **Strategic**
- **Policy**
- **Country Portfolio**
- **Corporate
Emergency
Response**

DECENTRALIZED EVALUATIONS (NOT OEV Managed)

- **Impact**
- **Operation** →
- **Joint Evals**
- **Activities**
- **Pilots**
- **Themes**
- **Transfer
modalities**
- **Any other
area of action**

Evaluation Questions & Criteria



... and 3 extra criteria for humanitarian evaluations:

- **Coverage**
- **Connectedness**
- **Coherence**

WFP's Evaluation Function framing documents

Policy 2016-2021

Vision & strategic direction for WFP's evaluation function Centralized (CE) and Decentralized (DE)

Coverage norms for CE and DE established

Strategy
Work-streams for
phased implementation



Charter
Governance
framework &
institutional
arrangements

WFP evaluation function: alignment with the Integrated Road Map



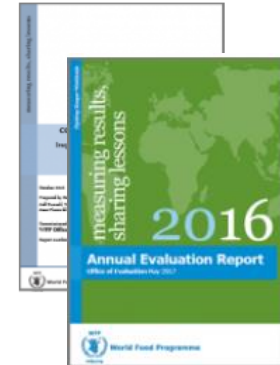
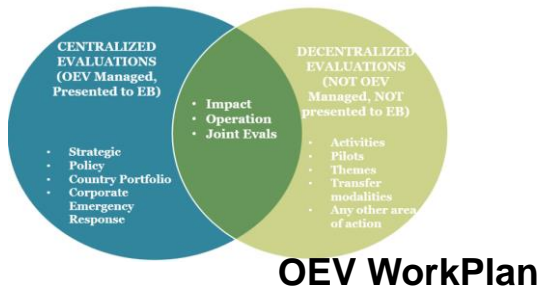
- 1. Country Portfolio Evaluations**
- 2. Decentralized Evaluations**
- 3. Improved performance**
- 4. Lessons learning**



Evaluation coverage, planning and reporting



Evaluation Policy 2016-2021
Corporate Evaluation Strategy
Annual Consultation on Evaluation with EB



Annual Evaluation Report
Evaluation Round Table



WFP Management Plan



Evaluation Reports
<http://www.wfp.org/evaluation/list>

Quality in Evaluation



WFP Evaluation function in the international community of practice



Rome-based agencies



Inter-Agency Humanitarian Evaluations (IAHE) Steering Group



Enhancement of quality support mechanisms



**OEV's DE
help desk**



**Quality assurance
system**



**Outsourced quality
support service for DEs**



**Independent evaluation
expertise**



**Evaluation
capacity development**

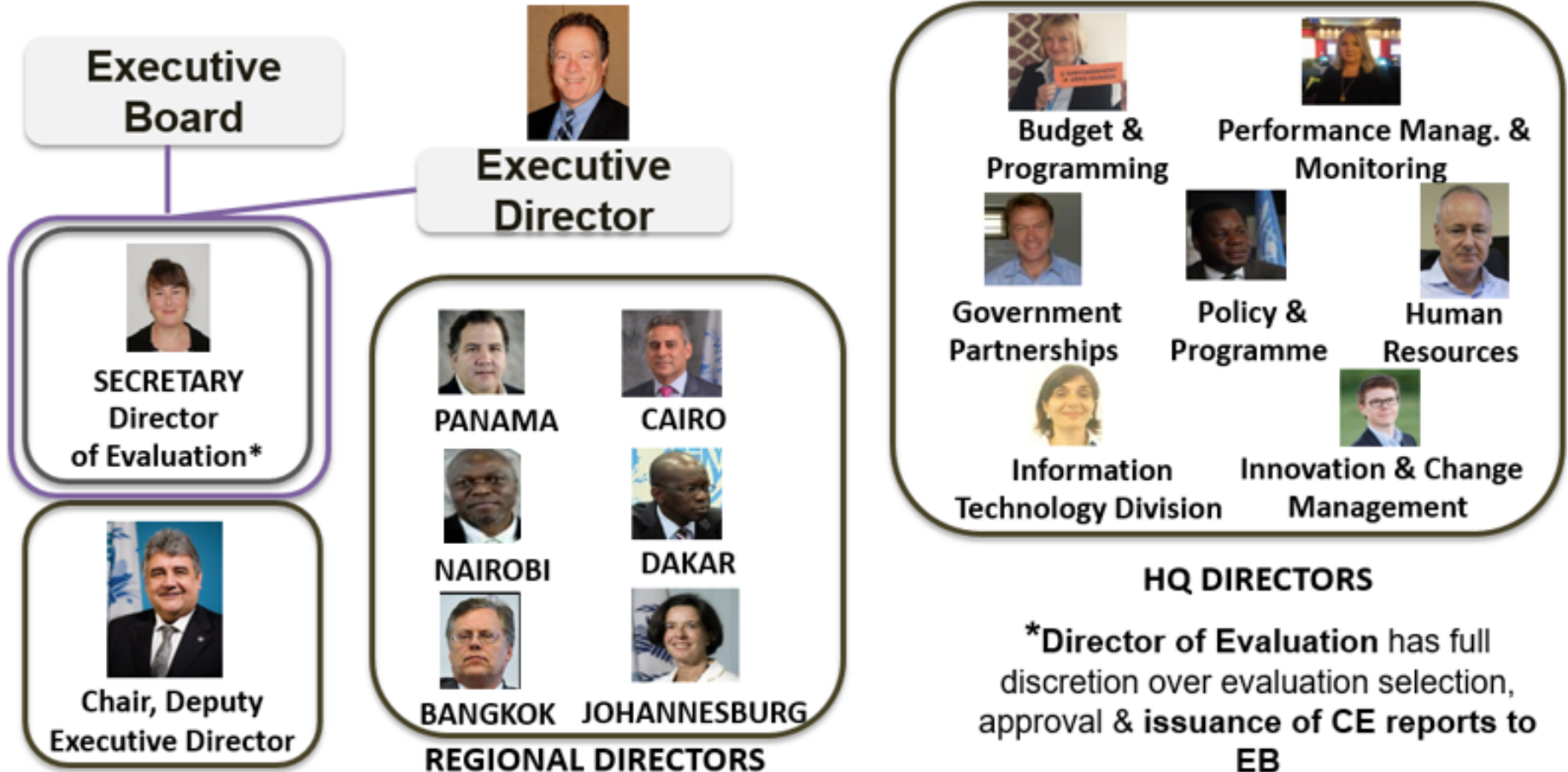


Community



Post-Hoc quality assessment

WFP Evaluation function oversight: Evaluation Function Steering Group

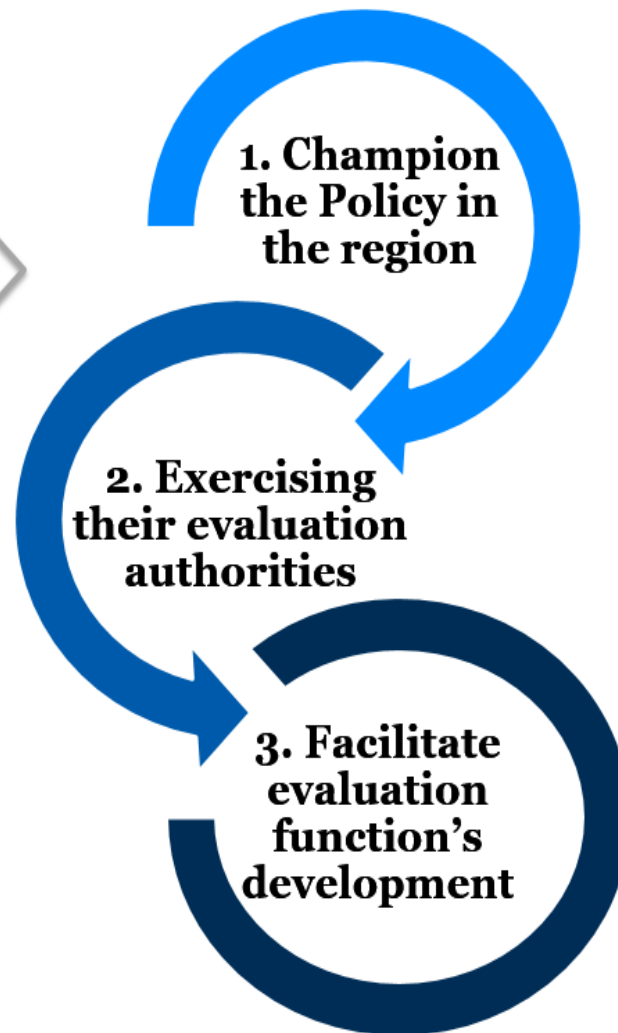


WFP Evaluation function oversight: Regional Evaluation Committees (RECs)



Mirroring the EFSG at regional level

Support **Regional Director's** role in



Yumiko Kanemitsu
(RBB)



Luca Molinas
(RBC)



Filippo Pompili
(RBD)



Grace Igweta
(RBJ)



Roberto Borlini
(RBN)



Ivan Touza
(RBP)



WFP Evaluation function oversight: Executive Board Role in evaluation



Oversight

- Exercise oversight of evaluation function
- Guide management in policy implementation
- Consider AER & all centralized evaluation reports
- Consider management responses & follow-up action reports

Normative Framework

- Approve evaluation policy and safeguard provisions
- Approve appointment, made by the ED, of Director of Evaluation
- Provide strategic guidance through Annual Consultation on Evaluation
- Foster evaluation culture as members of WFP Governing Body

Resourcing

- Approve OEV's budget
- Review trends in human & financial resources dedicated to evaluation

Planning

- Review OEV's work plan & priorities within WFP's Management Plan

Use

- Consider use of evaluation evidence when approving new policies, strategies, programmes, Management Plans, etc.
- Use evidence generated by evaluations in its decision-making

OEV WORK PLAN 2018 & OUTLOOK FOR 2019-20



TABLE A.V.3: CENTRALIZED EVALUATION PLAN, 2018 AND OUTLOOK FOR 2019 AND 2020

Type	2018	2019	2020
Policy	<p><i>Continued from 2017:</i></p> <ul style="list-style-type: none"> Principled action and access in humanitarian contexts (A/18) Protection (A/18) <p><i>New starts:</i></p> <ul style="list-style-type: none"> Safety nets update Revised school feeding 	<p><i>Continued from 2018:</i></p> <ul style="list-style-type: none"> Safety nets update (tbd) Revised school feeding (tbd) <p><i>New starts:</i></p> <ul style="list-style-type: none"> HIV/AIDS Peacebuilding in transition settings Gender 1 other: topic to be determined 	<p><i>Continued from 2019:</i></p> <ul style="list-style-type: none"> HIV/AIDS Peacebuilding in transition settings Gender 1 other: topic to be determined <p><i>New starts:</i></p> <ul style="list-style-type: none"> 4: topics to be determined
Strategic	<p><i>Continued from 2017:</i></p> <ul style="list-style-type: none"> Resilience (1/19) CSP pilots (2/18) <p><i>New starts:</i></p> <ul style="list-style-type: none"> Innovations in constrained environments (A/19) 	<p><i>Continued from 2018:</i></p> <ul style="list-style-type: none"> Innovations in constrained environments (A/19) <p><i>New starts:</i></p> <ul style="list-style-type: none"> WFP's performance management in the SDG era (tbd) Managing organizational change (1/20) 	<p><i>Continued from 2019:</i></p> <ul style="list-style-type: none"> WFP performance management in the SDG era Managing organizational change (1/20) <p><i>New starts:</i></p> <ul style="list-style-type: none"> 2: topics to be determined
Country portfolio	<p><i>Continued from 2017:</i></p> <ul style="list-style-type: none"> Central African Republic (A/18) Mali (2/18) Somalia (2/18) <p><i>New starts:</i></p> <ul style="list-style-type: none"> Madagascar (2/18) Malawi (2/18) A third country (tbd) 	<p><i>Continued from 2018:</i></p> <ul style="list-style-type: none"> Third country from 2018 <p><i>New starts:</i></p> <ul style="list-style-type: none"> Democratic Republic of the Congo (ICSP) Bangladesh (CSP) Lebanon (CSP) Sudan (ICSP) Timor-Leste (CSP) 	<p><i>Continued from 2019:</i></p> <p>tbd</p> <p><i>New starts:</i></p> <ul style="list-style-type: none"> Colombia Ecuador El Salvador Guatemala Honduras Namibia Mozambique United Republic of Tanzania Zimbabwe China Indonesia Lao People's Democratic Republic Nepal Philippines
Level 3 Humanitarian emergency response	<p><i>Continued from 2017:</i></p> <ul style="list-style-type: none"> WFP response to the Syrian emergency (2/18) <p><i>New starts:</i></p> <ul style="list-style-type: none"> WFP response in northern Nigeria 1 or 2 IAHEs (tbd) 	<p><i>Continued from 2018:</i></p> <ul style="list-style-type: none"> WFP response in northern Nigeria (A/19) <p><i>New starts:</i></p> <ul style="list-style-type: none"> To be decided based on context: assume 3 (2 IAHEs; 1 WFP Level 3 emergency response) 	<p><i>Continued from 2019:</i></p> <ul style="list-style-type: none"> To be decided based on context: assume 3 (2 IAHEs; 1 WFP Level 3 emergency response) <p><i>New starts:</i></p> <ul style="list-style-type: none"> To be decided based on context: assume 3 (2 IAHEs; 1 WFP Level 3 emergency response)
Impact evaluations	<p><i>New starts:</i></p> <ul style="list-style-type: none"> New series (tbd) 	<p><i>New starts:</i></p> <ul style="list-style-type: none"> New series continues (tbd) 	<p><i>Continued from 2019:</i></p> <p><i>New starts:</i></p>
Evaluation syntheses	<ul style="list-style-type: none"> 2017 annual evaluation report (A/18) Others (tbd) 	<ul style="list-style-type: none"> 2018 annual evaluation report (A/19) Series relevant to WFP Strategic Plan 	<ul style="list-style-type: none"> 2019 annual evaluation report (A/20) Subregional thematic syntheses

- It sets **priorities for evaluations & development of the evaluation function**
- Elaborated **independently by Director of Evaluation**, in consultation with WFP senior management and other main stakeholders
- **Presented to and approved by EB** as part of WFP's Management Plan

Source: Annex V of WFP Management Plan (2018–2020)