



Regional Overview for Southern Africa

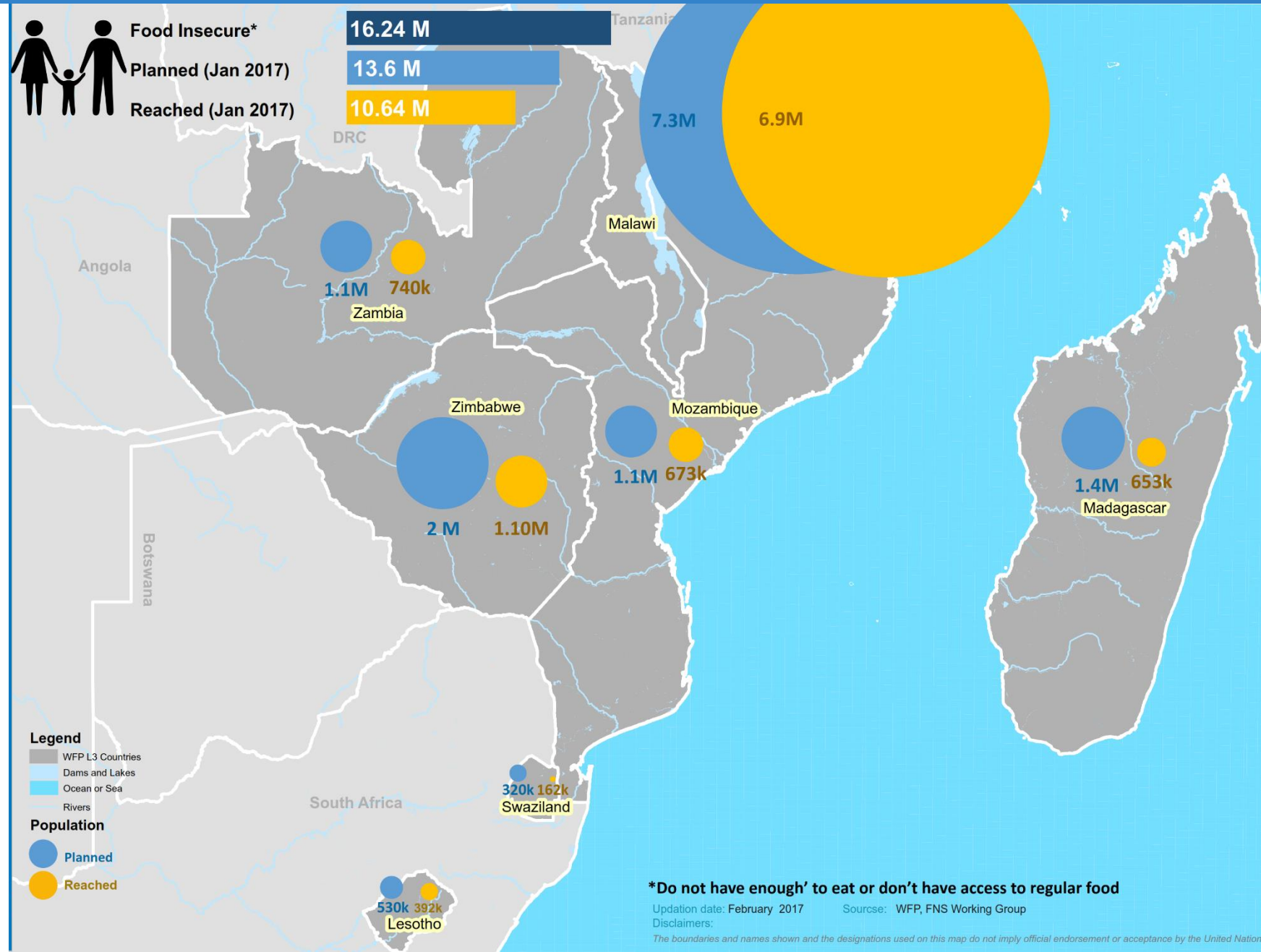
First Regular Session of the Executive Board, 2017

Lean Season Peak

The impact of the El Niño-induced drought now reaching its peak in Southern Africa.

Some 16 million food-insecure people required assistance.

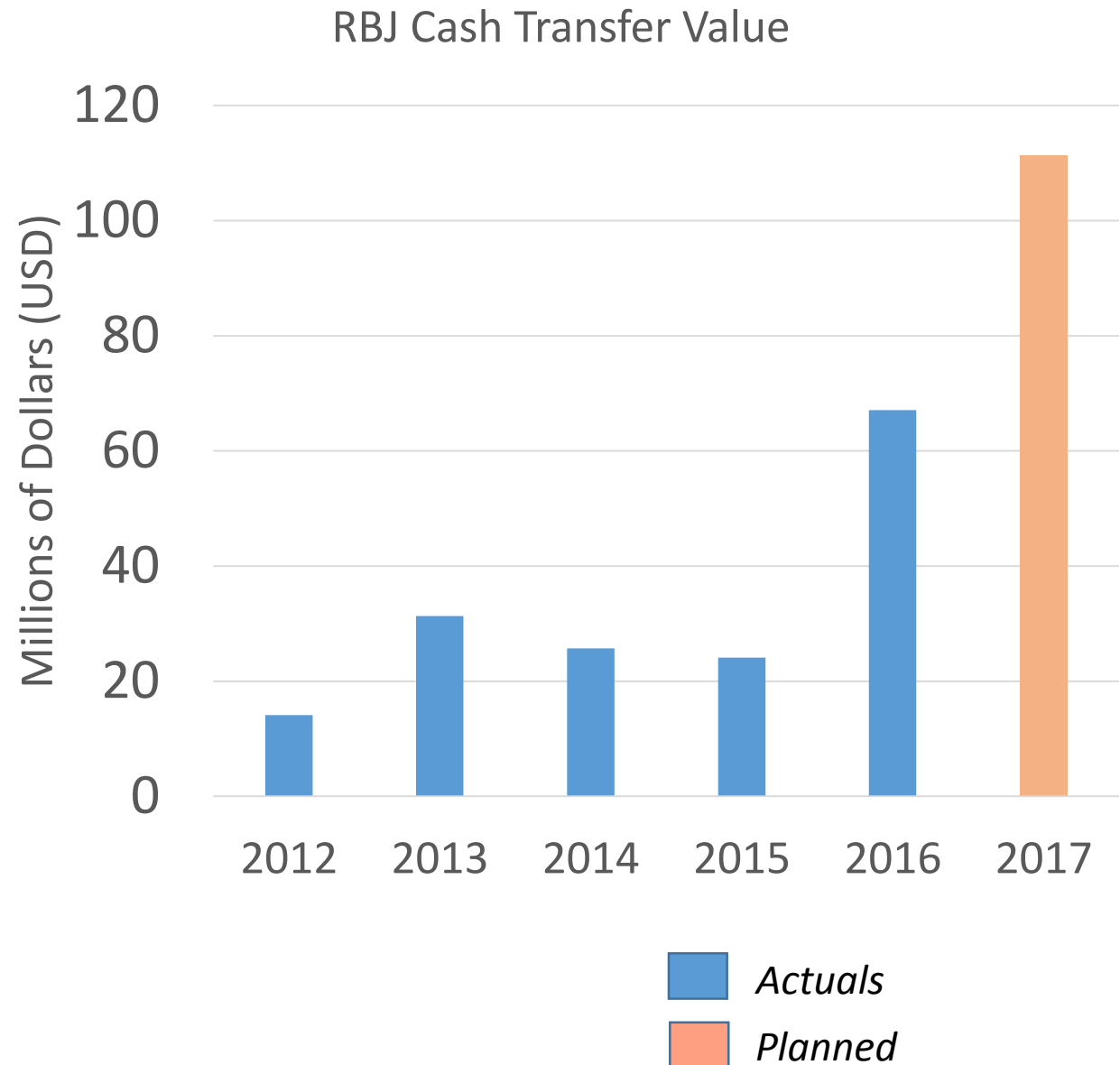
WFP's combined relief, resilience and development portfolio reaches more than 10.6 million people.



- ***SADC's Regional Role and National Leadership***
- ***RIASCO Common Goal Setting***
- ***Strong FAO and WFP Agency Collaboration***
- ***Resourcing and Leaning Forward Facilitated Timely Response***
- ***Capacity to Respond to Region's Specific Nutrition Needs***

Use of CBT

- ***Improved Analytics for Flexible, Market-Specific Modalities***
- ***mVAM was expanded to 7 countries, and 32 bulletins were issued.***
- ***In 2016, cash-based transfer reached their highest in the region, worth a total of 67 million dollars.***
- ***Across relief and recovery operations, cash based transfers represented 58 percent in Lesotho, 30 to 35 percent in DRC and Zimbabwe.***

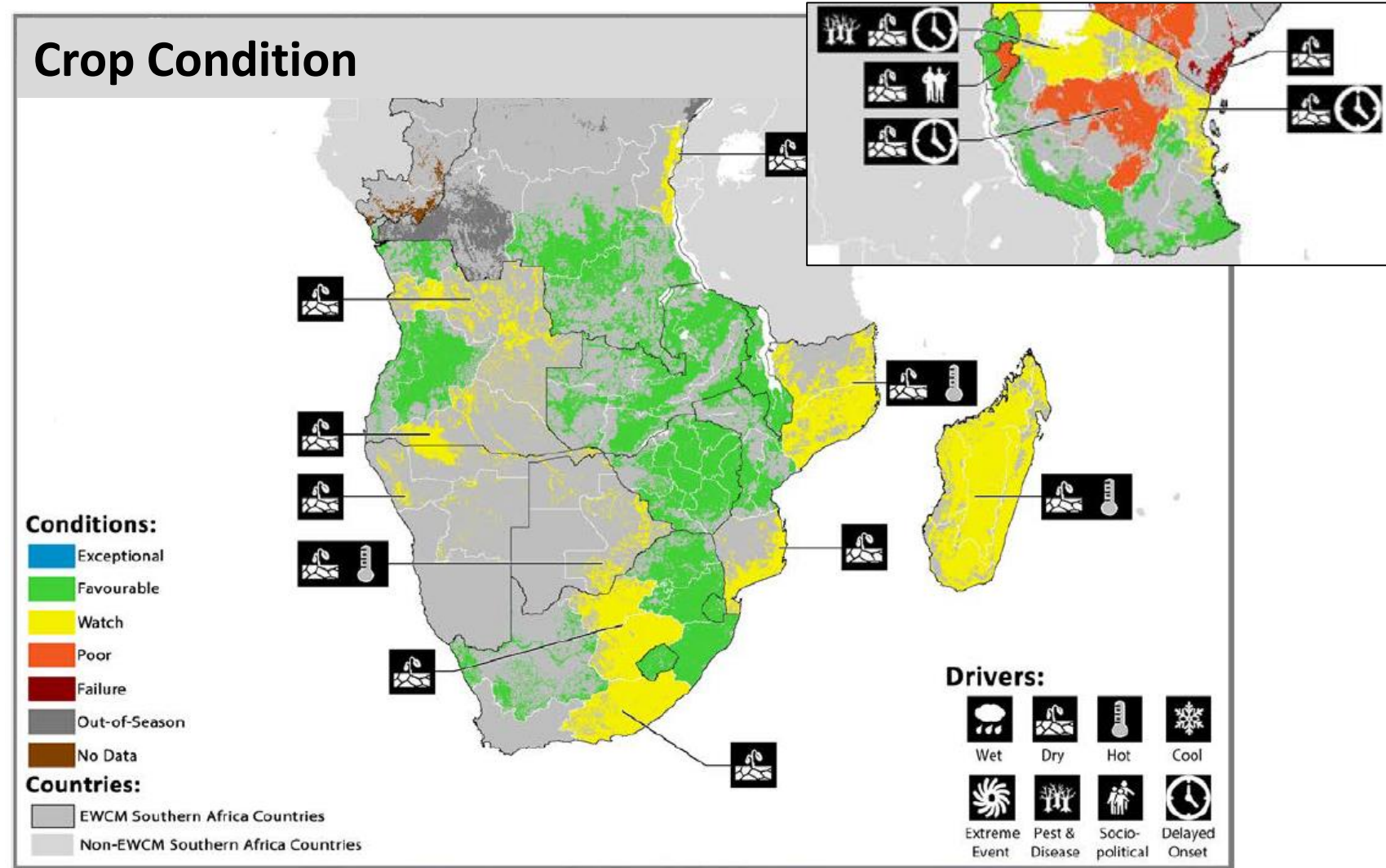


Key Challenges

- ***Inter-Agency Forums Required Stand Up***
- ***Staffing Levels and Capacities Required Augmentation***
- ***Regional Cereal Deficit Demanded High Level of Sourcing From Outside the Region***
- ***Timeliness of Disaster Declarations***
- ***Insufficient Investment in Resilience***

Way Forward

- **2016/2017 season looks favourable.**
- **Threat of Fall Armyworm.**
- **Drier conditions in some parts of Madagascar, Namibia and Tanzania persist.**
- **Securing Recovery and Resilience Key**
- **El Niño Blueprint for Action**



*Crop condition map synthesizing information as of December 28th. Crop conditions over the main growing areas are based on a combination of inputs including remotely sensed data, ground observations, field reports, national, and regional experts. **Crops that are in other than favourable conditions are labeled on the map with their driver.***

- ***Great Lakes Region requires continued focus, additional humanitarian needs are anticipated.***
- ***Conflict in east and central DRC pose risks to humanitarian activities.***
- ***Since August 2016, 150,000 people have been affected by recurring violence.***
- ***Regional Instability Drives Refugee Flight***
- ***The HRP targets more than 2.7 million people for food assistance needs.***



- ***Regional gender policy implementation strategy well underway.***
- ***8 CO Gender Action Plans have been completed.***
- ***Proven Role of Dedicated Gender Advisors.***





Thank You