

DR Congo

Overview



Kitwe ○ *Kasai Region: Kasai, Kasai Central, Kasai Oriental, Lomami and Sankuru provinces



DR Congo

Humanitarian Situation

7.7 million
food insecure countrywide (June 2017)

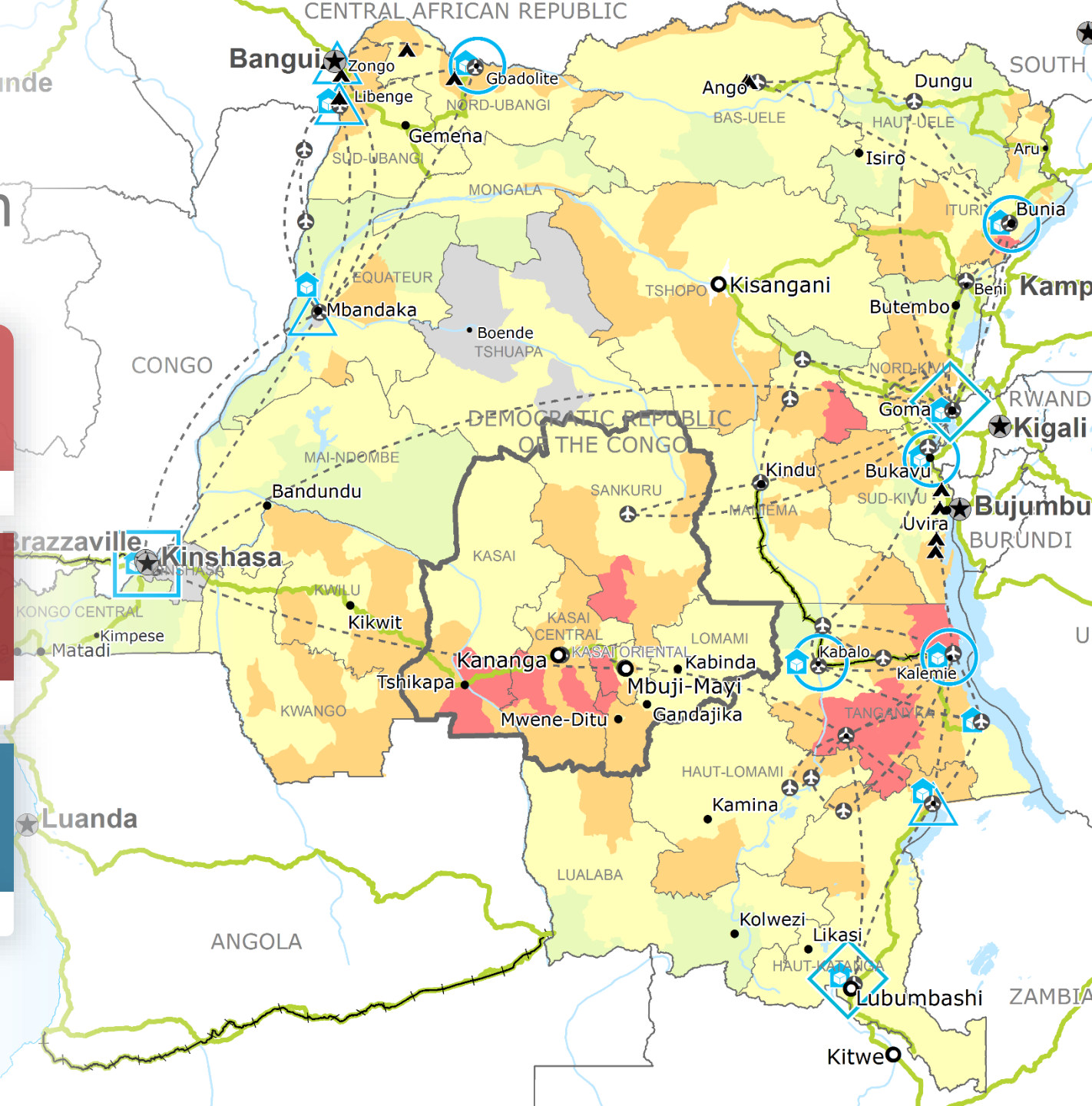
Up from **5.9 million people** in June 2016

1.5 million
severely food insecure (IPC Phase 4)

Up from **170,000 people** in June 2016

2.8 million
food insecure in the Kasai Region

1 million severely food insecure (IPC Phase 4)





DR Congo

Displacement

3.8 million
internally displaced countrywide

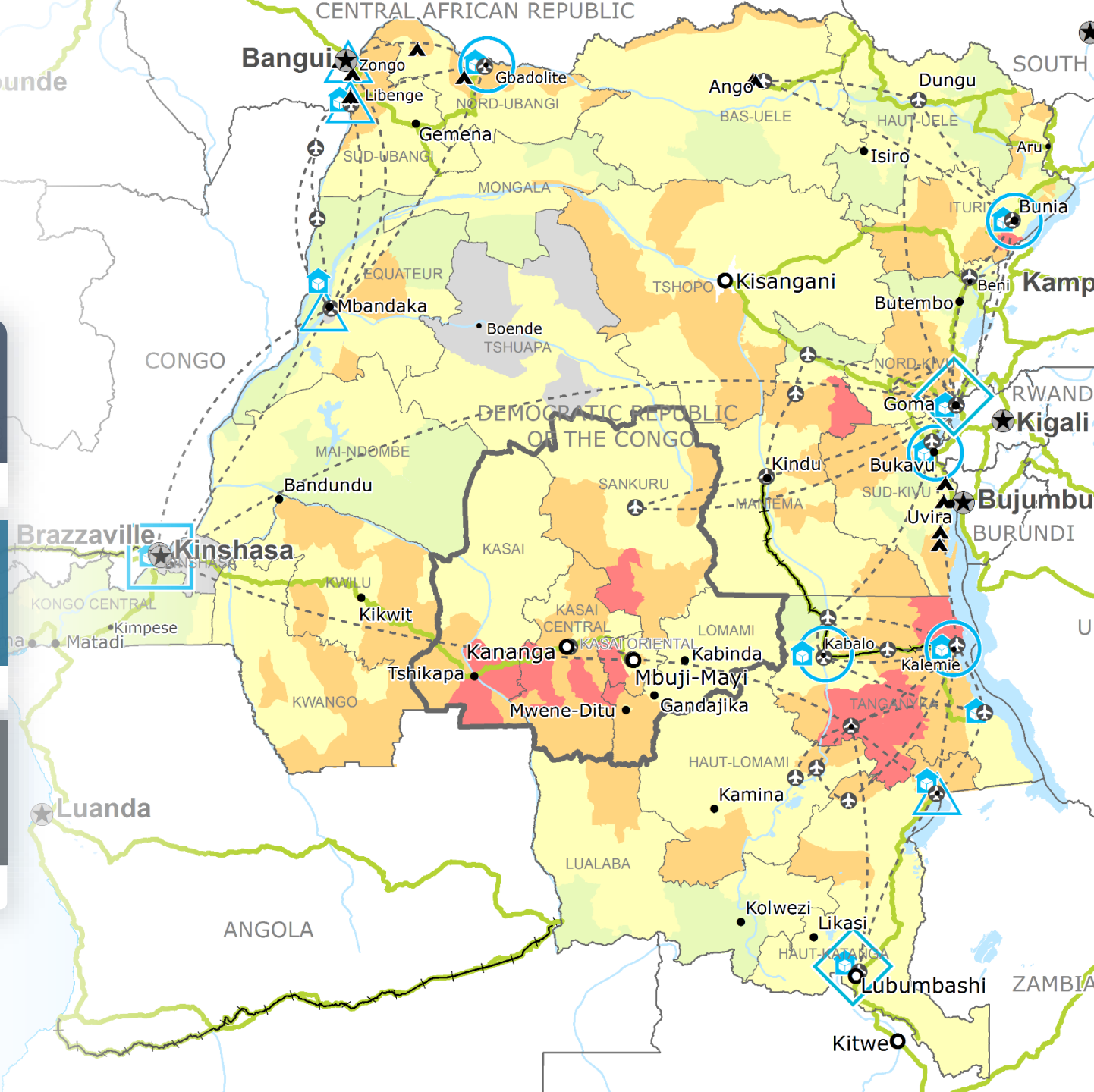
1 million displaced from January to June 2017

1.4 million
Internally displaced in Kasai

Since August 2016

31,000
refugees from Kasai to Angola

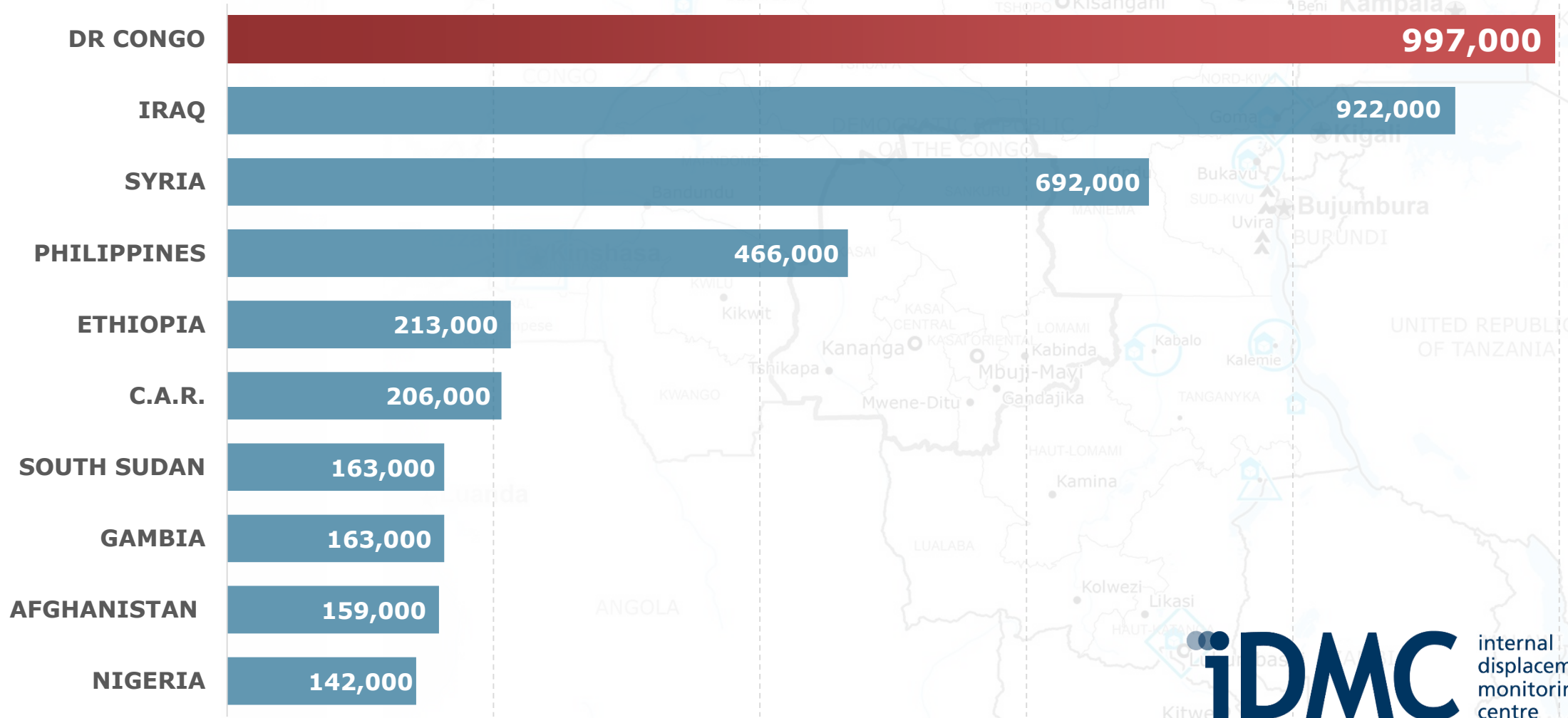
50,000 expected by the end of the year





DR Congo

New Displacements by Conflict and Violence (Jan-June 2017)





DR Congo

Kasai Crisis: WFP Response

490,000

people targeted by WFP (Sept - Dec 2017)

1.2 million people targeted overall

450,000*

targeted for general food distributions

45,000 targeted for nutrition interventions

*50,000 of these are planned to receive cash-based transfers pending market assessment results



**LEVEL-3
EMERGENCY**

Activated
06 October 2017



DR Congo

Kasai Crisis: WFP Response

Operational Challenges



INADEQUATE PHYSICAL AND SOCIAL INFRASTRUCTURE

Impassable roads, collapsed bridges, low market capacity



RESTRICTED HUMANITARIAN ACCESS

Widespread violence and insecurity, ongoing armed conflict, violence against humanitarian personnel



SUPPLY CHAIN ISSUES

6-8 week lead time, no local procurement options for nutrition commodities



FUNDING

Significant shortfalls starting in November, funding urgently needed due to long lead times



PARTNERS

Partners still finalizing response strategies



DR Congo

Kasai Crisis: WFP Response

Funding Requirements



DR CONGO RESPONSE (PRRO 200832)

Funding requirement: **US\$ 38 million** (Oct 2017 – Mar 2018)



KASAI CRISIS RESPONSE (EMOP 201092)

Funding requirement: **US\$ 28.3 million** (Sept - Dec 2017)



ANGOLA REFUGEE RESPONSE (EMOP 201083)

Funding requirement: **US\$ 10.6 million** (Oct 2017 – July 2018)