

WFP Zimbabwe

Implementing the IRM

Eddie Rowe, Country Representative and Director



WFP Zimbabwe Country Strategic Plan (2017-2021)

SDG 2.1 End hunger & ensure access to food	SDG 2.2 End all forms of malnutrition	SDG 2.3 Double agricultural productivity & the incomes of small-scale food producers	SDG 2.4 Resilient ecosystems for adaptation to climate change & disasters	SDG 17.9 Enhance int. support for CDE to support nat. plans to implements all SDGs	SDG 17.16 Enhance global partnerships for sustainable development, share knowledge, mobilize funds
--	---	--	---	--	--

ZIM-ASSET pillars and ZUNDAF outcomes

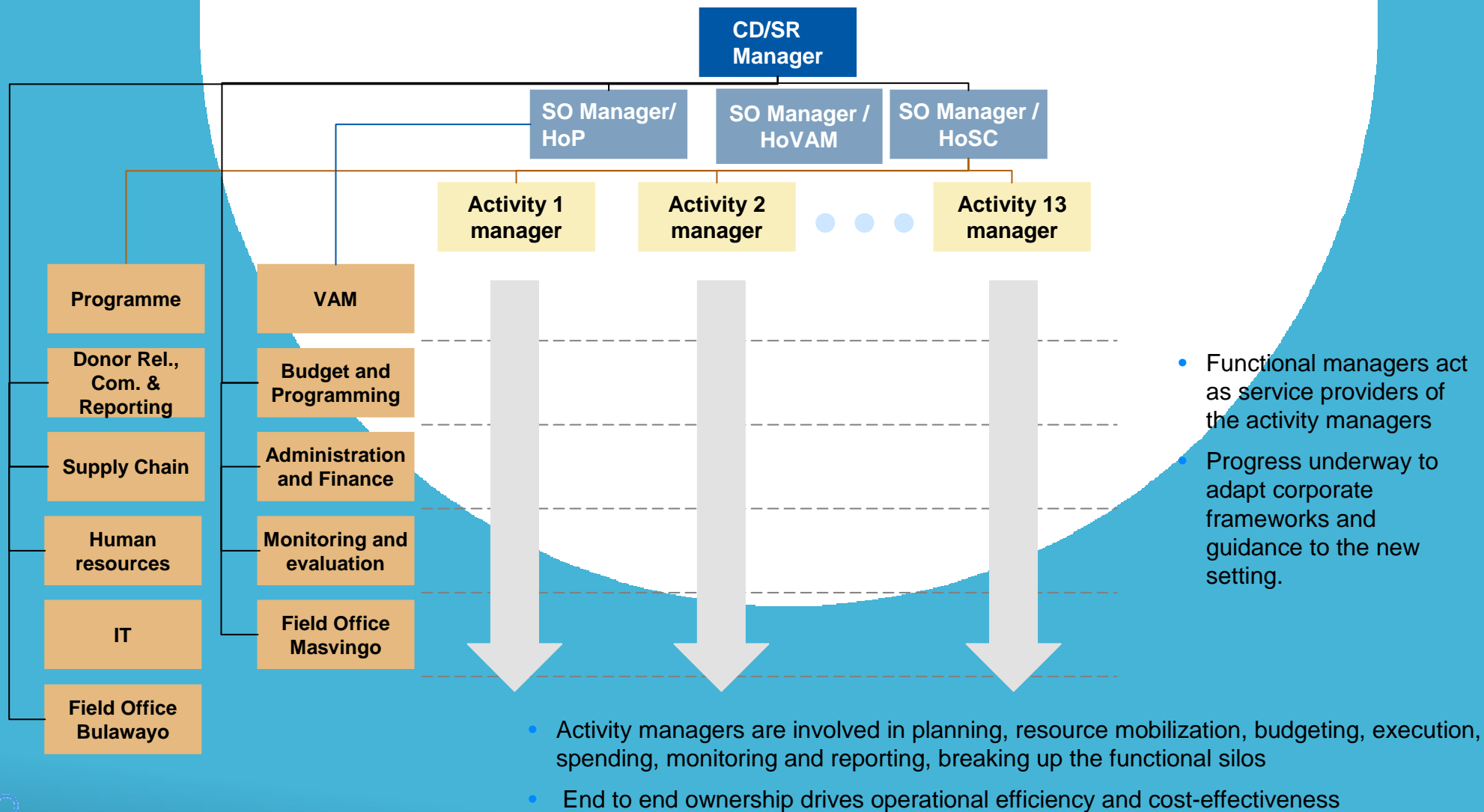
Strategic Outcome 1 Basic food needs of vulnerable populations are met	Strategic Outcome 2 Child stunting rates are in line with achievement of national & global targets by 2025	Strategic Outcome 3 HHs have increased access to well-functioning agricultural markets by 2030	Strategic Outcome 4 Food insecure rural HHs achieve food security & resilience to seasonal shocks	Strategic Outcome 5 SP system ensures chronically vulnerable people meet basic needs all year round	Strategic Outcome 6 Hum & dev. support cost-effective & efficient supply chain services
Activity 1 Lean season assistance (cash or food) to most vulnerable HHs	Activity 3 Evidence for nutrition advocacy, policy & program decision-making	Activity 5 Support development of local food mktg & procurement mechanism	Activity 7 Support creation & rehabilitation of assets for food & nutrition security	Activity 10 Risk management, insurance & financing mechanisms	Activity 13 Logistics and procurement expertise and services
Activity 2 Support to refugees	Activity 4 Support govt. on nutrition programming nationally and subnationally	Activity 6 Enable farmer orgs. to aggregate & market surplus production	Activity 8 Enhance capacity of prioritized districts to plan & manage resilience building	Activity 9 Analytical expertise to support planning & management of solutions & responses	
				Activity 11 Social transfer programs under national SP systems	
				Activity 12 School feeding programme	

6 months of CSP: What has

	Gains	Challenges	Suggestions
Institutional Structure	New ways of working <ul style="list-style-type: none"> •Moving away from traditional unit structures •Ripple effects 	Meeting our own demand <ul style="list-style-type: none"> •Staff capacity •New roles and relationships across units 	Self-psychology <ul style="list-style-type: none"> •Periodic self-analysis •Ensure appropriate hiring & T
Maximising Operational Efficiency	CPB <ul style="list-style-type: none"> •Clear line of sight •Transparency & efficiency 	Value for money <ul style="list-style-type: none"> •Adapting the CRF to local context 	<ul style="list-style-type: none"> • Support from Corporat • Consultations at country I
Rationalizing Systems & Processes	Setting the bar <ul style="list-style-type: none"> •Shaping our path •Flexibility to adapt 	Roles and responsibilities <ul style="list-style-type: none"> •Ensuring a smooth, timely and efficient process 	Develop Standard Operati Procedures <ul style="list-style-type: none"> •End-to-End CSP Processe Systems Maps
CSP-Friendly Funding	Seeds to grow <ul style="list-style-type: none"> •Initial buy-in •Funding for all activities 	Ensuring stability of programming <ul style="list-style-type: none"> •Need for multi-year, flexible funding, at SO level or above 	Increased advocacy <ul style="list-style-type: none"> •On high-impact activities •Interconnectivity •Comprehensive approach

INSTITUTIONAL STRUCTURE:

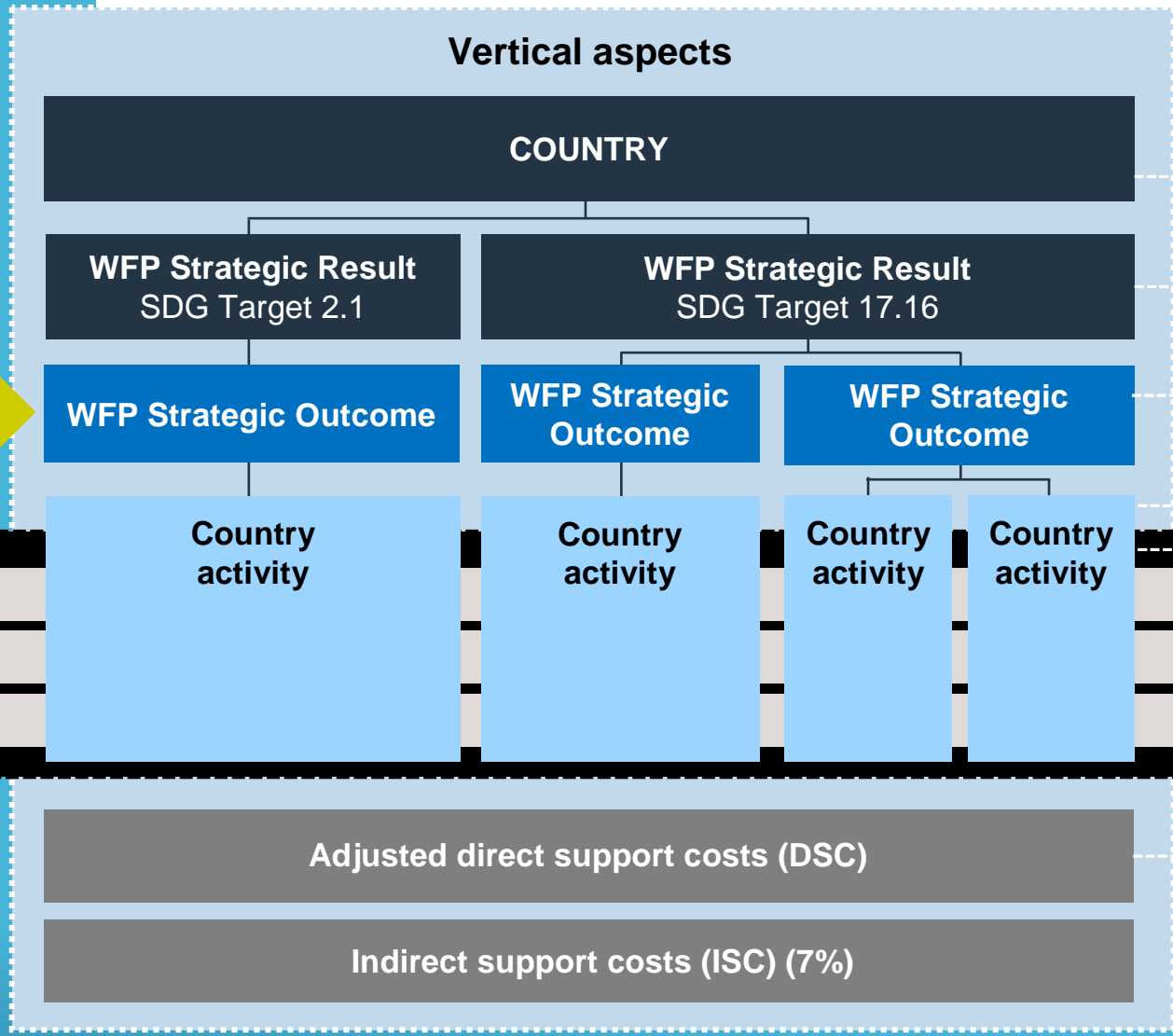
Facilitate end-to-end ownership and cross functional cooperation



MAXIMISING OPERATIONAL EFFICIENCY: Country Portfolio Budget structure

Focus area

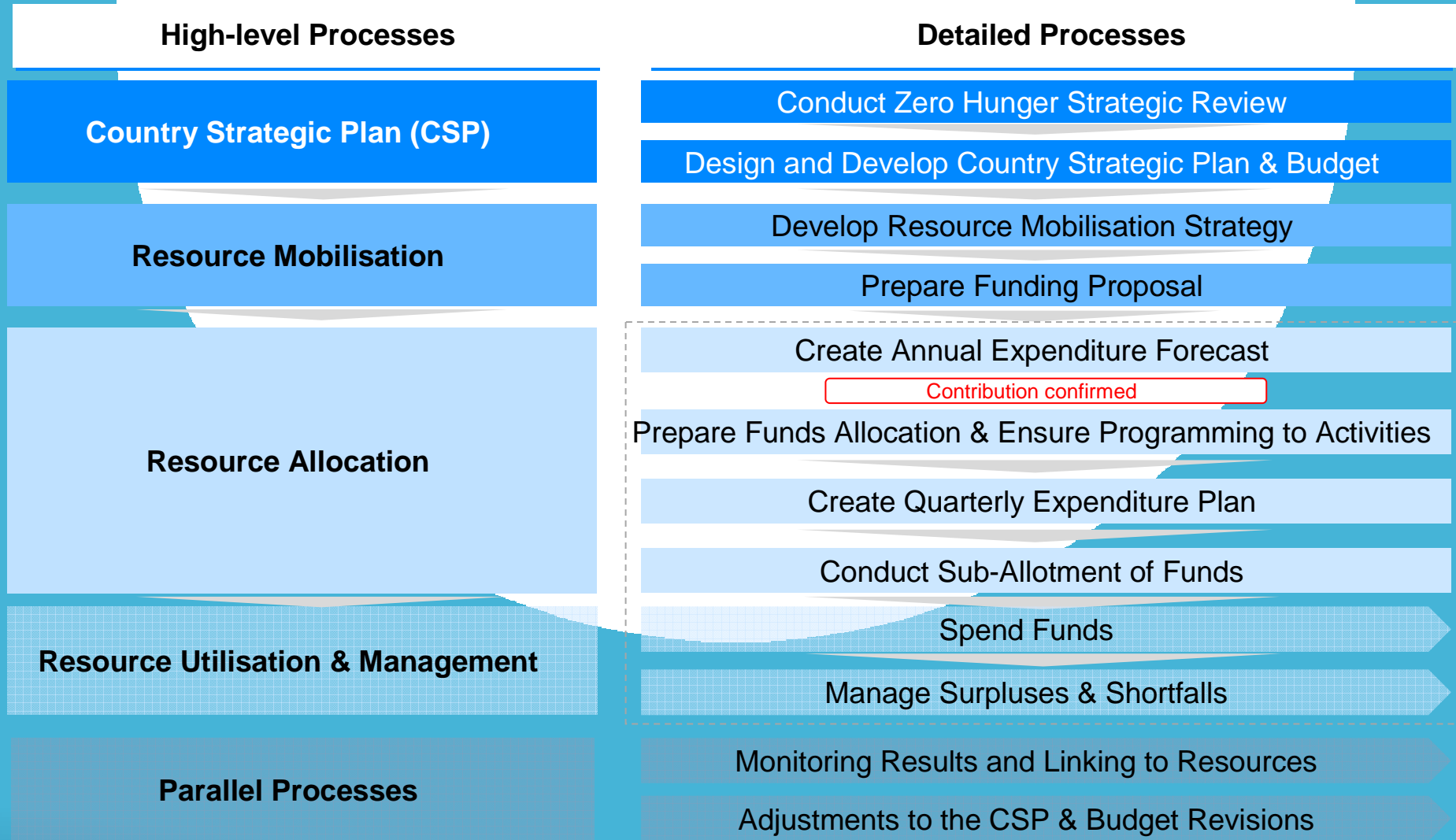
Horizontal aspects



Budget control	Revenue collection	Programming Spending Ceilings
X	X	Sum of all S
X	X	
X	X	Sum of all activities below single SO
	X	
Planning, recording, expenditures and reporting		

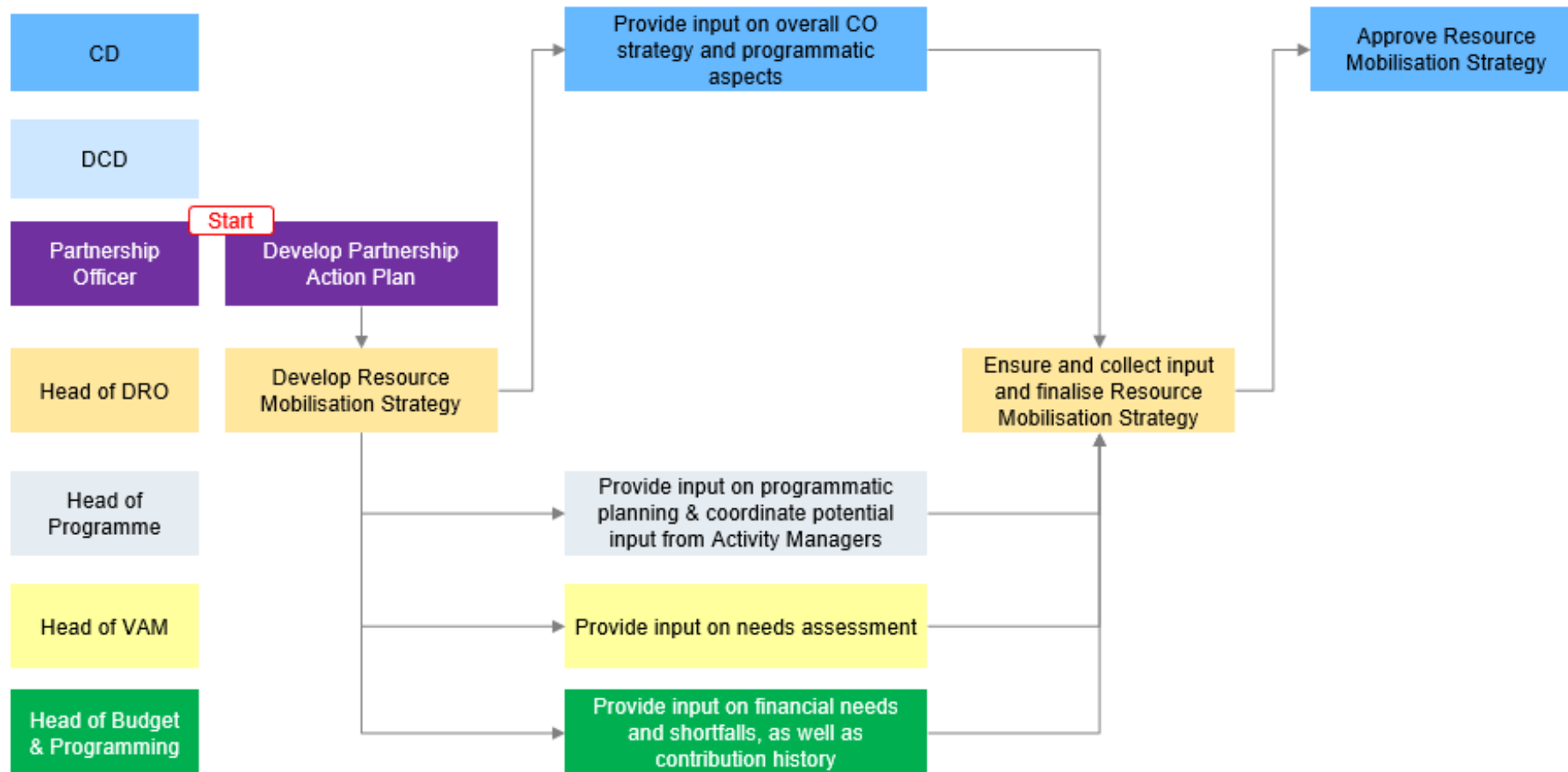
ATIONALIZING SYSTEMS AND PROCESSES:

nd-to-end process mapping



ATIONALIZING SYSTEMS AND PROCESSES: Example

Develop Resource Mobilisation Strategy



Partnerships, and new ways of partnering

Logos of partner organizations: UNICEF, UNHCR (The UN Refugee Agency), UNFPA, UNDP, World Vision, The World Bank, and Newlands Clinic. A graphic of the Ugandan flag is also present.

New innovative approaches and solutions

Icons representing innovative approaches: 'Home-Centered School' (graduation cap), 'Africa Risk Capacity' (map of Africa in hands), and 'Risk Reserves' (money bag icon).

Strengthening of partnership base

Significant increase in donations due to El Niño L3

Timeline of donor contributions:

- 2015:** Private donors (USAID, UNICEF, UNHCR, UNFPA, UNDP, WFP, UN Women, UN Children's Fund, UN High Commissioner for Refugees, UN High Commissioner for Human Rights, UN High Representative for the Least Developed Countries, UN High Representative for the Western Balkans, UN High Representative for the Middle East and North Africa, UN High Representative for the Horn of Africa, UN High Representative for the Sahel and West Africa Bureau, UN High Representative for the Eastern Mediterranean, UN High Representative for the South Asia Bureau, UN High Representative for the Arab States Bureau, UN High Representative for the African Union, UN High Representative for the European Union, UN High Representative for the Latin America and Caribbean Bureau, UN High Representative for the Asia and the Pacific Bureau, UN High Representative for the Eastern Africa Bureau, UN High Representative for the Western Africa Bureau, UN High Representative for the Eastern Africa Bureau, UN High Representative for the Western Africa Bureau, UN High Representative for the Eastern Africa Bureau, UN High Representative for the Western Africa Bureau).
- 2016:** USAID, UNICEF, UNHCR, UNFPA, UNDP, WFP, UN Women, UN Children's Fund, UN High Commissioner for Refugees, UN High Commissioner for Human Rights, UN High Representative for the Least Developed Countries, UN High Representative for the Western Balkans, UN High Representative for the Middle East and North Africa, UN High Representative for the Horn of Africa, UN High Representative for the Sahel and West Africa Bureau, UN High Representative for the Eastern Mediterranean, UN High Representative for the South Asia Bureau, UN High Representative for the Arab States Bureau, UN High Representative for the African Union, UN High Representative for the European Union, UN High Representative for the Latin America and Caribbean Bureau, UN High Representative for the Asia and the Pacific Bureau, UN High Representative for the Eastern Africa Bureau, UN High Representative for the Western Africa Bureau.
- 2017:** USAID, UNICEF, UNHCR, UNFPA, UNDP, WFP, UN Women, UN Children's Fund, UN High Commissioner for Refugees, UN High Commissioner for Human Rights, UN High Representative for the Least Developed Countries, UN High Representative for the Western Balkans, UN High Representative for the Middle East and North Africa, UN High Representative for the Horn of Africa, UN High Representative for the Sahel and West Africa Bureau, UN High Representative for the Eastern Mediterranean, UN High Representative for the South Asia Bureau, UN High Representative for the Arab States Bureau, UN High Representative for the African Union, UN High Representative for the European Union, UN High Representative for the Latin America and Caribbean Bureau, UN High Representative for the Asia and the Pacific Bureau, UN High Representative for the Eastern Africa Bureau, UN High Representative for the Western Africa Bureau.

Timeline arrow from 2015 to 2017. 'Start of IRM preparations' is marked at the beginning of the timeline.

Logos for WFP (World Food Programme) and SCOP (Social Capital Operational Plan) with the tagline 'Enable the Change'.

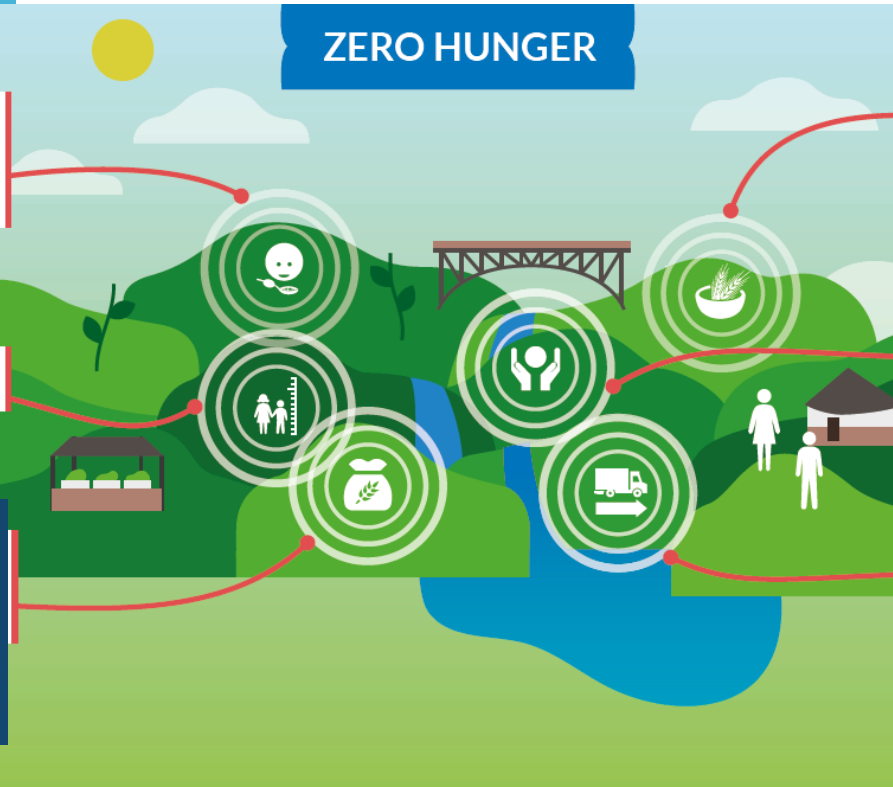


New ways of communicating

le, including
ees, can meet
f food and nutrition
rements during
re seasonal
KS

ren have reduced
ing rates by 2025

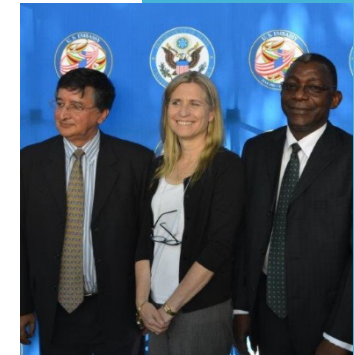
llholder farmers
access to well-
ioning agricultural
ets by 2030



Rural households achieve food security and are resilient to shocks

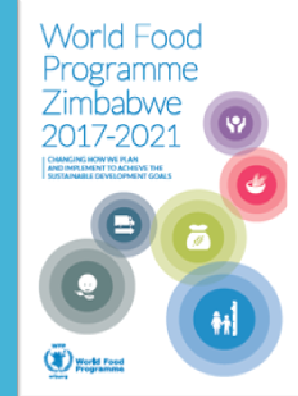
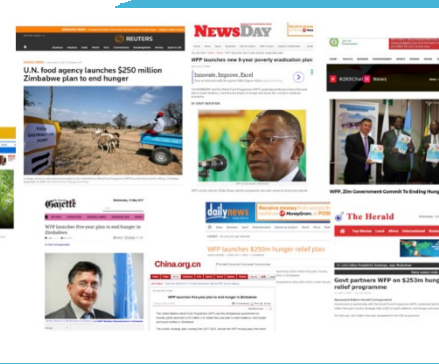
The social protection system ensures that vulnerable people can meet basic needs

Partners are supported by cost-effective and efficient supply chain services



Zimbabwe Country Strategic Plan (2017-2021)

SDG 2.2	SDG 2.3	SDG 2.4	SDG 17.9	SDG 17.16
End all forms of malnutrition	Double agricultural productivity & the incomes of small-scale food producers	Resilient ecosystems for adaptation to climate change & disasters	Enhance int. support for CD to support nat. plans to implement at SDGs	Enhance global partnership for sustainable dev. to share knowledge & mobilize funds
ZIM-ASSET pillars and ZUNDAF outcomes				
Strategic Outcome 2 Child stunting rates are in line with achievement of national & global targets by 2025	Strategic Outcome 3 SHF have increased access to well-functioning agricultural markets by 2030	Strategic Outcome 4 Food insecure rural HHs achieve food security & resilience to seasonal shocks	Strategic Outcome 5 SP system ensures chronically vulnerable people meet basic needs all year round	Strategic Outcome 6 Hum & dev. supported by cost-effective & efficient supply chain services
Activity 3 Evidence for nutrition advocacy, policy & program decision-making	Activity 5 Support development of local food milg & procurement mechanisms	Activity 7 Support creation & mobilization of assets for food & nutrition security	Activity 10 Risk management, insurance & financing mechanisms	Activity 13 Logistics and procurement expertise and services
Activity 4 Support govt. on nutrition programming nationally and subnationally	Activity 6 Enable farmer orgs. to aggregate & market surplus production	Activity 8 Enhance capacity of prioritized districts to plan & manage resilience building	Activity 9 Analytical expertise to support planning & management of solutions & responses	Activity 11 Social transfer programs under national SP systems
		Activity 12 School feeding programs		





Thank you