

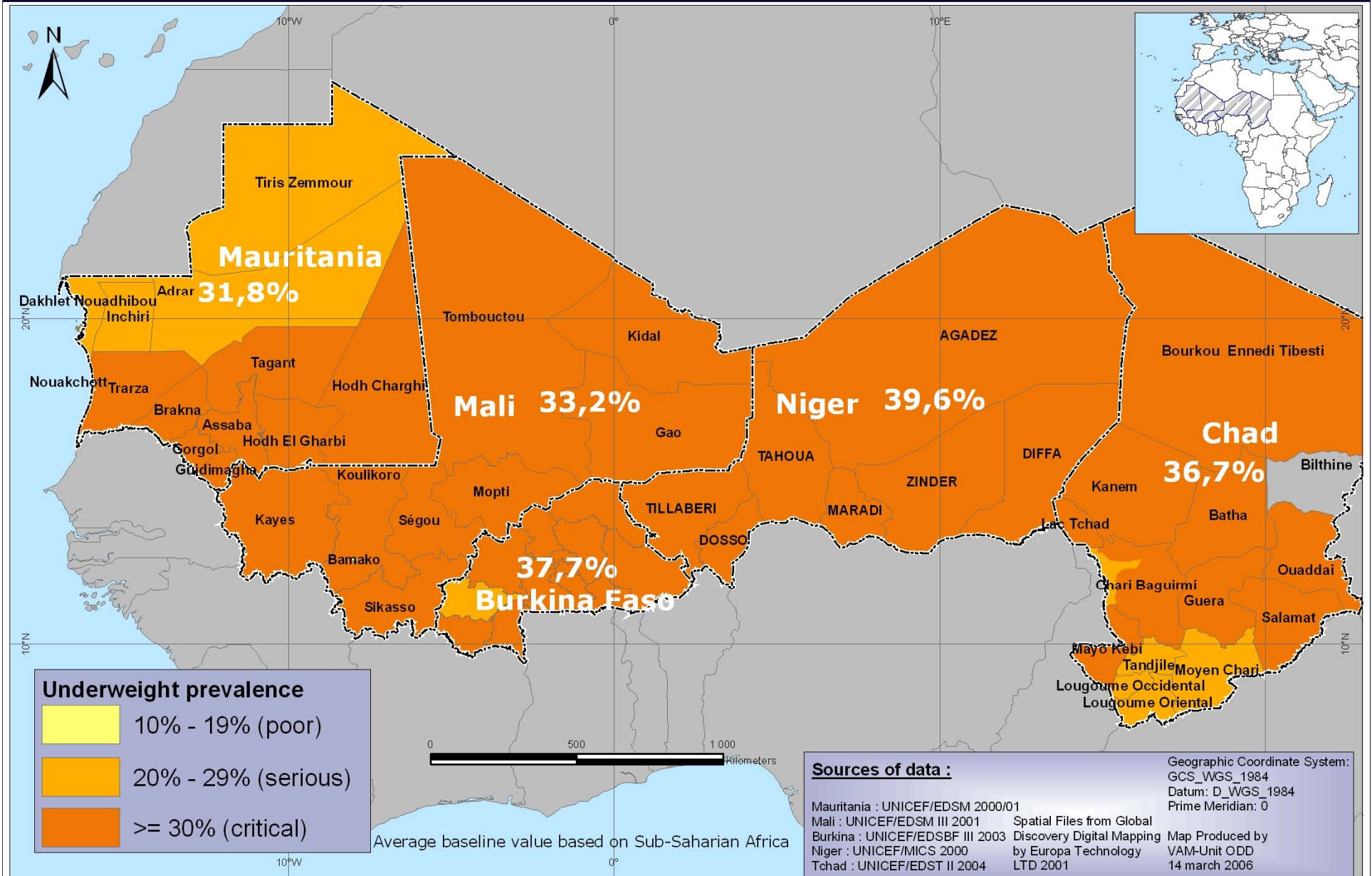


United Nations  
**World Food  
Programme**

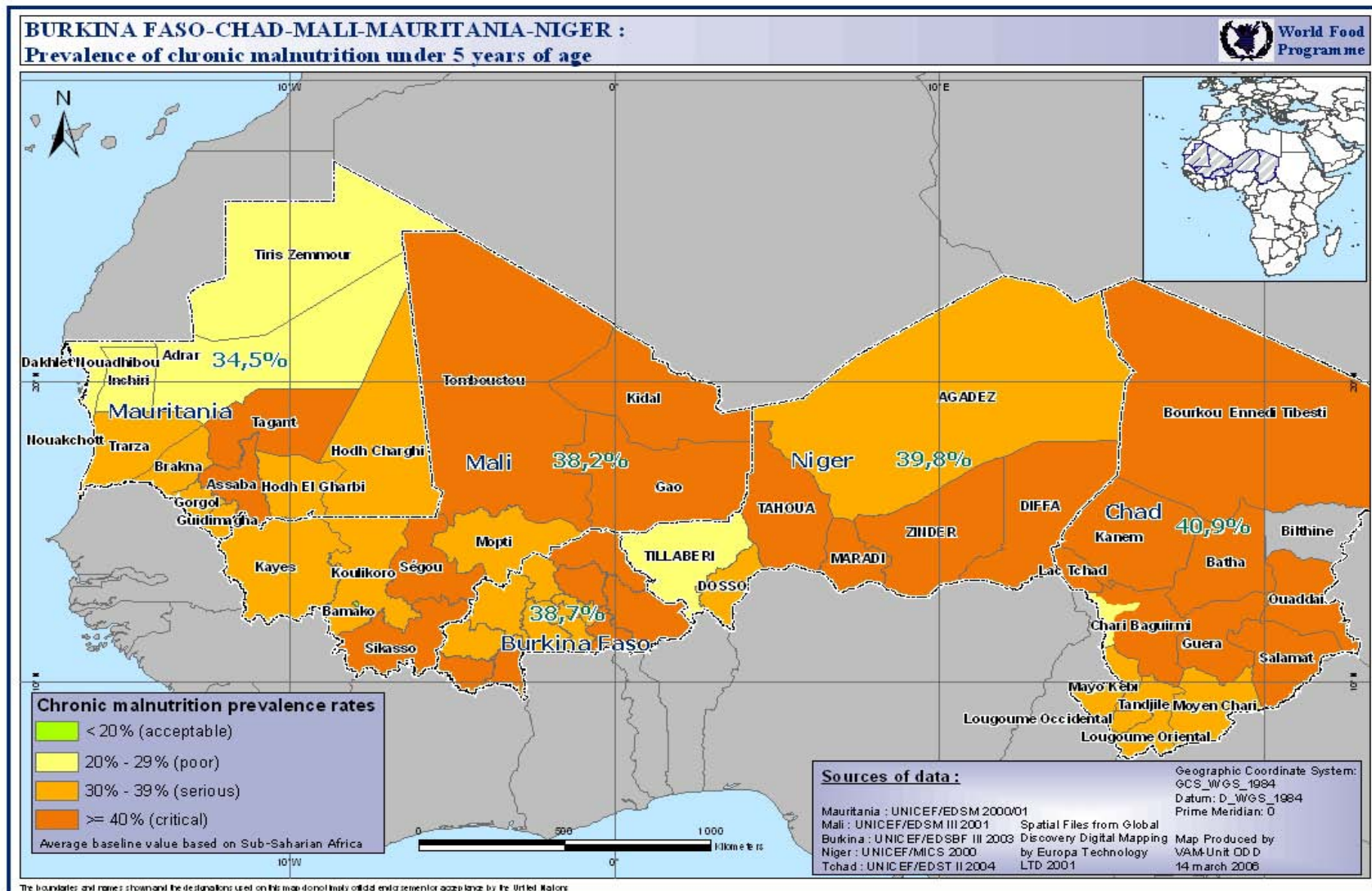
**Executive Board  
First Regular Session  
February 19-21, 2007**

# **WFP West Africa Regional Bureau (ODD)**

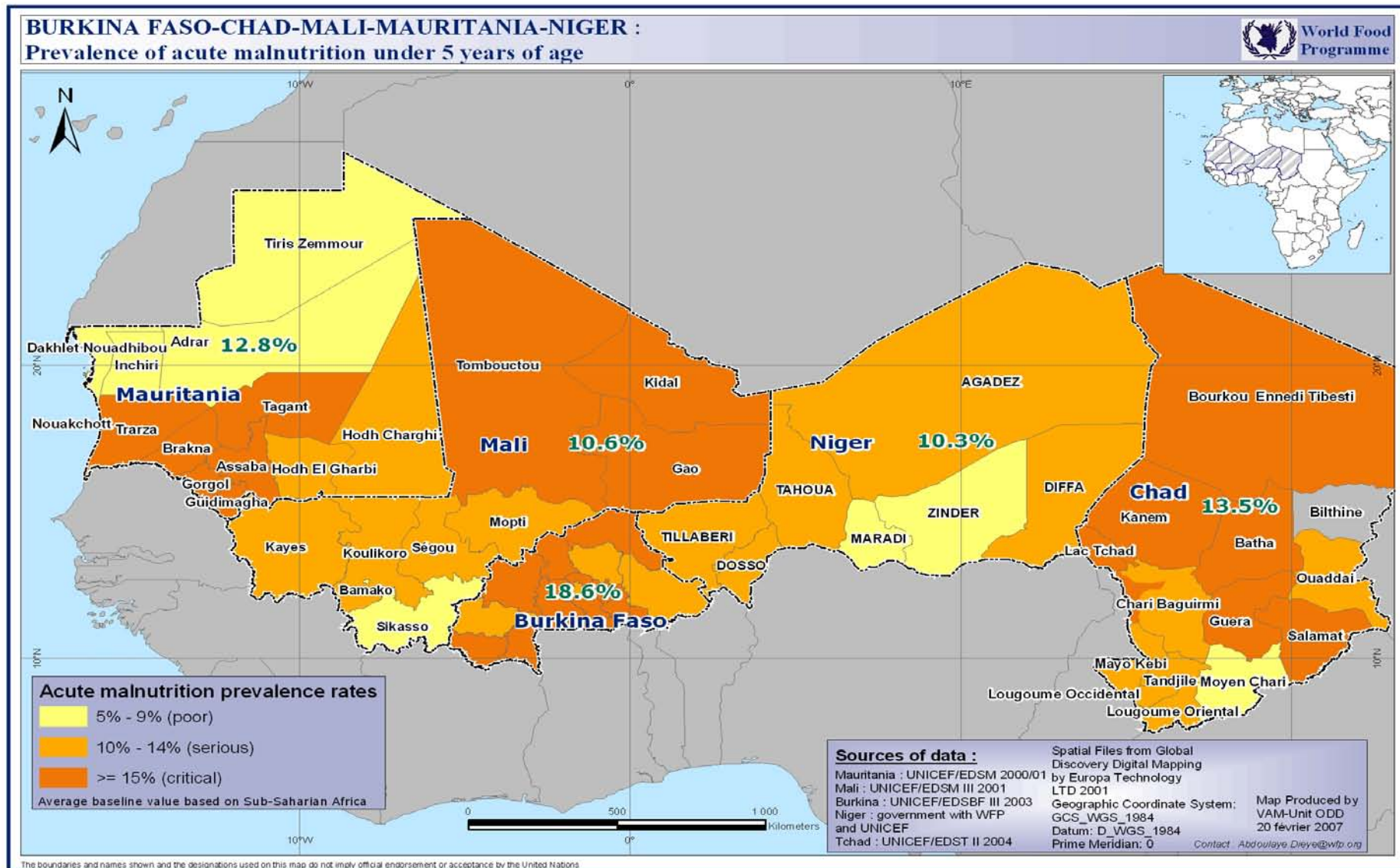
# Sahel: A region with some of the highest child undernutrition rates in the world



# Sahel: Chronic undernutrition among children under five is widespread



# Sahel: Acute undernutrition rates in children among the highest in the world



# 2007 Project Requirements: Sahel PRROs

Project	Total Cost (US \$ million)	Shortfalls – Next 6 Months (US \$ million)	Shortfalls – Next 6 Months (MT)
Niger PRRO	37.3	2.3	2 176
Mauritania PRRO	40.6	5.5	9 282
Mali PRRO	28.9	3.1	4 144
Burkina Faso PRRO	18.3	1.9	2 542

16°0'0"W

14°0'0"W

12°0'0"W

10°0'0"W

8°0'0"W



# WEST AFRICA COASTAL OPERATION

## World Food Programme PRRO 10064.3 (2005 - 2006)



11°0'0"N

11°0'0"N



9°0'0"N

9°0'0"N

### Legend

- National Capital
- Country Office
- Sub-Office
- Country boundary

7°0'0"N

7°0'0"N

0 100 200  
Kilometers

5°0'0"N

5°0'0"N

Sources :  
Spatial Files from  
Global Discovery  
Digital Mapping  
by Europa Technology  
LTD 2001, VAM Data

Map Projection :  
Geographic Coordinate  
System  
GCS\_WGS\_1984  
Datum: D\_WGS\_1984  
Prime Meridian: 0

Map Produced by  
VAM-Unit ODD  
November 2005

The boundaries and names shown and the designations used on  
this map do not imply official endorsement or acceptance by the United Nations

Conakry

Labé

Guinea

Kankan

Port Loko

Magburaka

Kissidougou

Freetown

Sierra Leone

Kailahun

Voinjama

Kenema

Nzérékoré

Tubmanburg

Phebe

Ganta

Saclepea

Monrovia

Liberia

Buchanan

Zwedru

Côte d'Ivoire

Harper

## West Africa Coastal PRRO 10064.3

- **On February 16, UNHCR and WFP jointly confirmed that facilitated repatriation of Liberian refugees will end in June 2007**
- **Guinea, Sierra Leone and Liberia are preparing individual PRROs to address specific rehabilitation needs of each of the countries**
- **Regional Air Operation facing critical shortfall of US\$1,000,000 at a crucial time.**
  - **45% increase in passengers in 2007**
  - **Critical situation in Guinea**

## West Africa Coastal Guinea

- **General strikes in January and February deteriorated into violence in several parts of Guinea**
- **Martial law currently in force with danger that increased hostilities could result in population movements: internal displacement and/or refugees**
- **Non-essential UN staff and dependents were evacuated to Dakar on February 15, 2007**
- **Inter-Agency and WFP preparedness measures have been taken in Guinea, Côte d'Ivoire, Liberia, Sierra Leone, Guinea Bissau, Senegal and Mali.**



# Resource Requirements

<u>WAC</u>	Total Cost (US \$ million)	Shortfalls – Next 6 Months (US \$ million)	Shortfalls – Next 6 Months (mt)
PRRO 10064.3	161.9	1.0	855
Guinea PRRO*	19.0	N/A	N/A
Sierra Leone* PRRO	30.5	1.3	1 448
Liberia* PRRO	50.6	3.1	3 324
SO 10061.3	8.9	1.1	N/A
SO* 10552.0	TBC	0.6	N/A

\*Operations Under Preparation

10°0'0"W 8°0'0"W 6°0'0"W 4°0'0"W 2°0'0"W 0°0'0"

13°0'0"N  
11°0'0"N  
9°0'0"N  
7°0'0"N  
5°0'0"N

13°0'0"N  
11°0'0"N  
9°0'0"N  
7°0'0"N  
5°0'0"N



# COTE D'IVOIRE AND SURROUNDING COUNTRIES

## World Food Programme Regional PRRO 10372.0 (2005 - 2006 requirements)

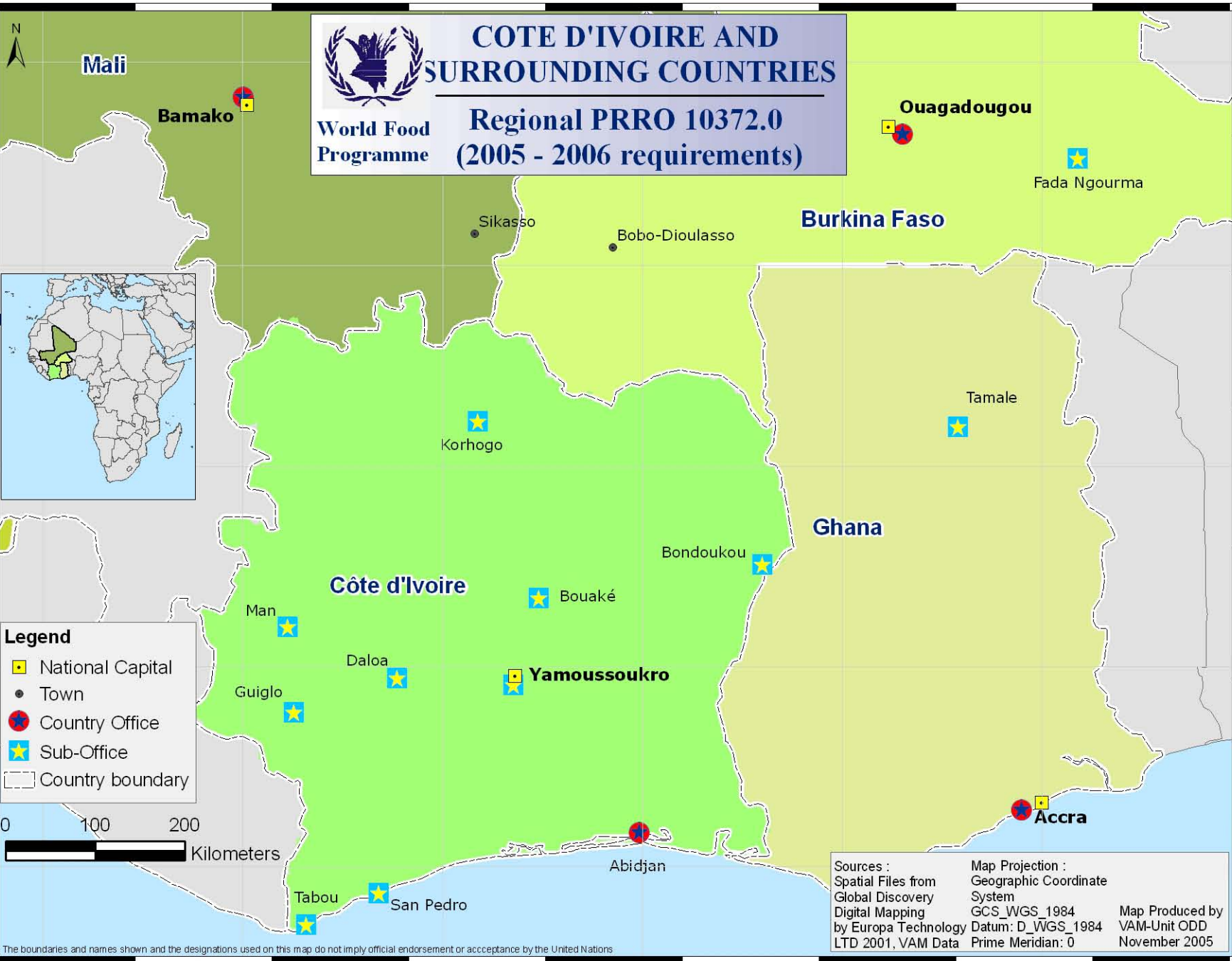


- Legend**
- National Capital
  - Town
  - Country Office
  - Sub-Office
  - Country boundary



The boundaries and names shown and the designations used on this map do not imply official endorsement or acceptance by the United Nations

10°0'0"W 8°0'0"W 6°0'0"W 4°0'0"W 2°0'0"W 0°0'0"



Sources :  
Spatial Files from  
Global Discovery  
Digital Mapping  
by Europa Technology  
LTD 2001, VAM Data

Map Projection :  
Geographic Coordinate  
System  
GCS\_WGS\_1984  
Datum: D\_WGS\_1984  
Prime Meridian: 0

Map Produced by  
VAM-Unit ODD  
November 2005

# Côte d'Ivoire

## PRRO 10372.0

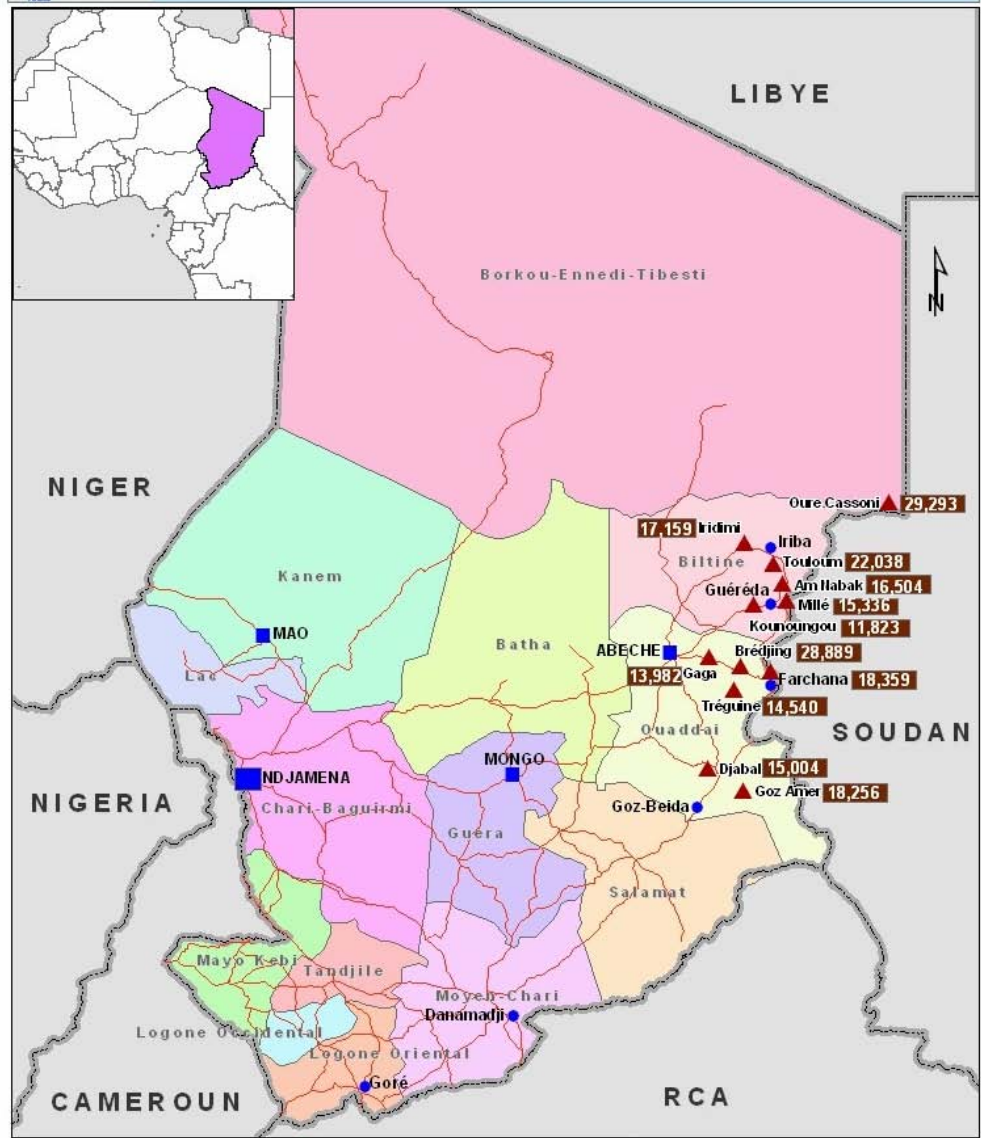
- **Zone of Confidence continues to split the country into the rebel-held North and the Government-controlled South**
- **WFP's current operation will end in June 2007**
- **A new regional PRRO is planned from July to:**
  - **Provide support to IDPs**
  - **Strengthen education system**
  - **protect vulnerable populations in Côte d'Ivoire, Ghana, Mali, and Burkina Faso**
- **Contingency provisions will ensure WFP's capacity to respond if situation worsens.**

# Resource Requirements

<b>Côte d'Ivoire +3</b>	Total Cost (UD \$ million)	Shortfalls – Next 6 Months (US \$ million)	Shortfalls – Next 6 Months (mt)
PRRO 10372.0	50.1	1.9	2 224

- **The achievements of PRRO 10372.0 will be sustained through the implementation of PRRO 10551.0 starting in July 2007.**

# SUDANESE REFUGEE CAMPS IN EASTERN CHAD



**Legende**

<span style="color: blue;">■</span> WFP Country Office	<span style="color: red;">▲</span> Refugee camp
<span style="color: blue;">■</span> WFP Sub-Office	<span style="border: 1px solid black; padding: 2px;">218,183</span> Sudanese refugees
<span style="color: blue;">●</span> WFP Field Office	— Roads

Map produced by VAM Unit Chad CO nov 2006  
 Spatial files from Global Discovery Digital Mapping  
 Map projection: Mercator  
 Refugees data from UNHCR

The boundaries and names shown and the designations used in this map do not imply any official endorsement or acceptance by the United Nations

# Chad

- **The security situation in Chad remains tense; rebel activity and inter-ethnic violence continue to cause population displacement**
- **WFP is assisting over 500,000 people**
  - Refugees from Sudan
  - Refugees from CAR
  - Affected local populations
  - Vulnerable groups under the Country Programme
- **To ensure continuity of food supplies resources must be secured now to pre-position stocks prior to the rainy season**

# Resource Requirements

<b>CHAD</b>	Total Cost (US \$ million)	Total Shortfall (US \$ million)	Shortfall - Next 6 Months (US \$ million)
SO 10560.0 Air Service	8.6	8.6	2.9

**Chad EMOP 10559.0 (Refugees from Darfur) and PRRO 10510.0 (Refugees from CAR) urgently require US\$5,000,000 contributions in order to pre-position food prior to upcoming rainy season.**

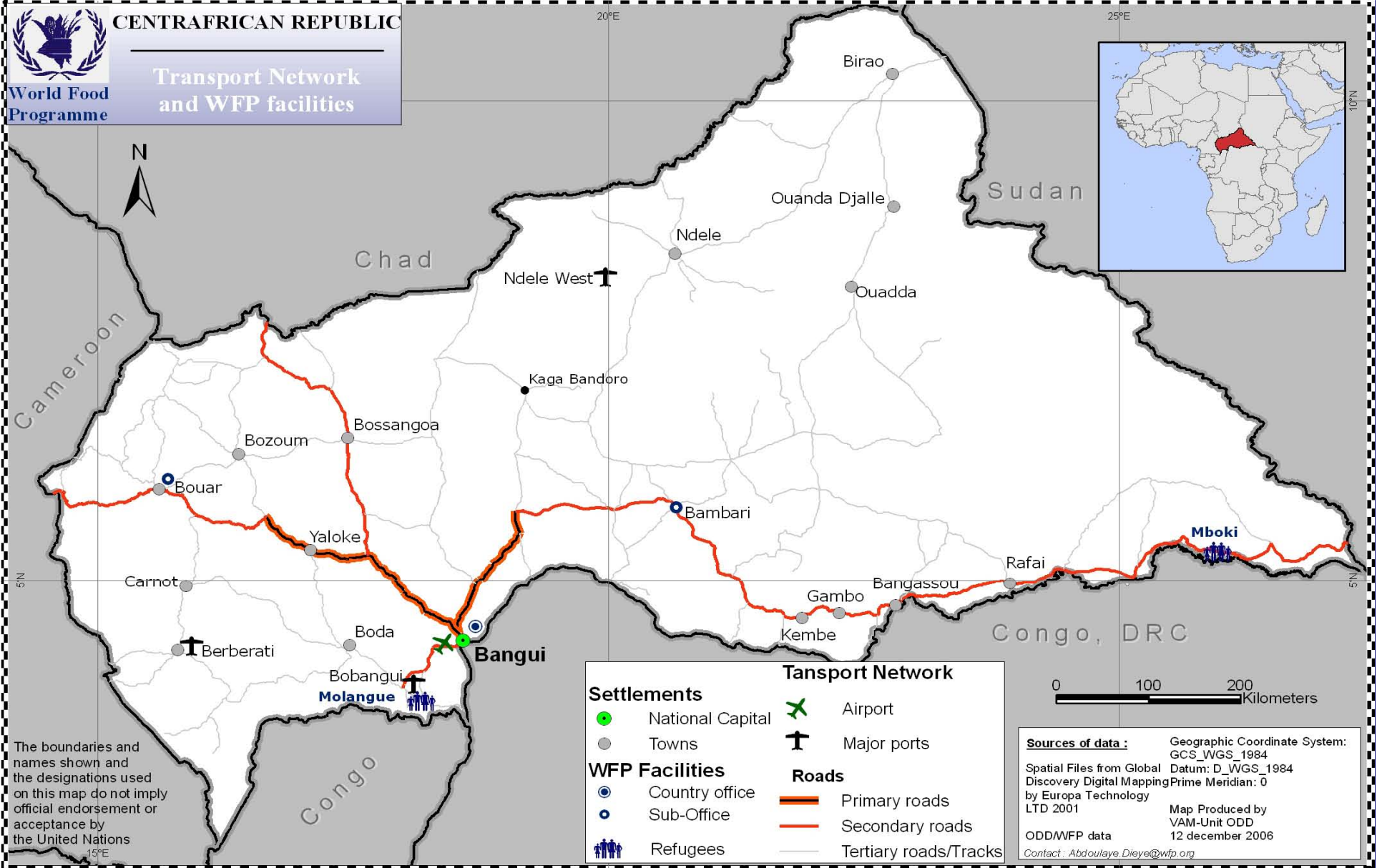
# Central African Republic (CAR)



CENTRAFRICAN REPUBLIC

World Food Programme

Transport Network and WFP facilities



The boundaries and names shown and the designations used on this map do not imply official endorsement or acceptance by the United Nations

<b>Settlements</b>		<b>Transport Network</b>	
● National Capital	✕ Airport	✕ Major ports	
● Towns			
<b>WFP Facilities</b>		<b>Roads</b>	
● Country office	▬ Primary roads	▬ Secondary roads	▬ Tertiary roads/Tracks
● Sub-Office			
👤 Refugees			



**Sources of data :** Geographic Coordinate System: GCS\_WGS\_1984  
 Spatial Files from Global Discovery Digital Mapping by Europa Technology LTD 2001  
 Datum: D\_WGS\_1984  
 Prime Meridian: 0  
 Map Produced by VAM-Unit ODD  
 12 december 2006  
 ODD/WFP data  
 Contact : [Abdoulaye.Dieye@wfp.org](mailto:Abdoulaye.Dieye@wfp.org)



## Central African Republic (CAR)

- **Regional instability in Sudan and Chad has led to insecurity in CAR**
- **Insecurity has led to significant internal displacement of people, especially in the north.**
- **Inter-agency preparedness measures have been taken and contingency plans are being updated.**

# Resource Requirements

<b>CHAD</b>	Total Cost (US \$ million)	Shortfall - Next 6 Months (US \$ million)	Shortfall - Next 6 Months (MT)
PRRO 10189.1	19.7	4.0	4 558
DEV 10361.0	20.0	2.8	2 828
SO 10560.0	2.2	1.1	N/A

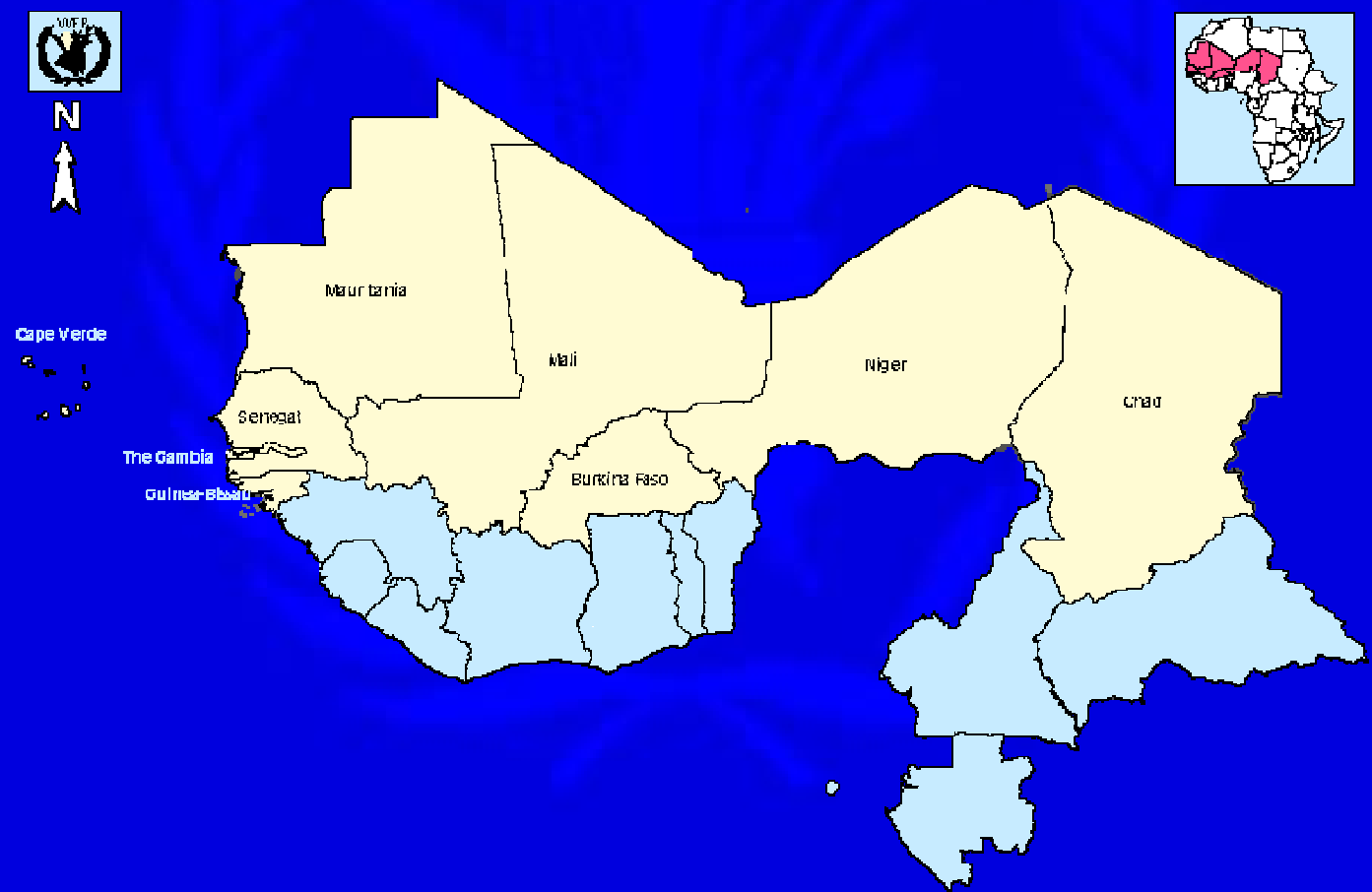


United Nations  
**World Food  
Programme**

**Executive Board  
First Regular Session  
February 19-21, 2007**

# **WFP West Africa Regional Bureau (ODD)**

# 'Alliance' Countries



# Sahel Alliance for Education

- **In 2006 the Alliance contributed to the strengthening of education monitoring and evaluation systems through building national capacities and supporting the inclusion of the Essential Learning Package.**
- **The evaluation system has been piloted in Senegal and will be rolled out in four additional countries in 2007-2008.**
- **In 2007 the Alliance will continue to advocate for government action at regional level**



United Nations  
**World Food  
Programme**

**Executive Board  
First Regular Session  
February 19-21, 2007**

# **WFP West Africa Regional Bureau (ODD)**

**Project for Consideration  
by the Board**

# Gambia DEV 10548.0





# Main Features

## Project objectives:

- Promote access to basic education, especially for girls.
- Provide capacity-building for government counterparts in the education sector

## The project:

- Is consistent with the PRSP and UNDAF
- Will be implemented with government, Unicef, other UN Agencies and NGOs
- Is geographically targeted and gender sensitive



United Nations  
**World Food  
Programme**

**Executive Board  
First Regular Session  
February 19-21, 2007**

**Thank you for your  
support**