

# East & Central Africa towards resilience



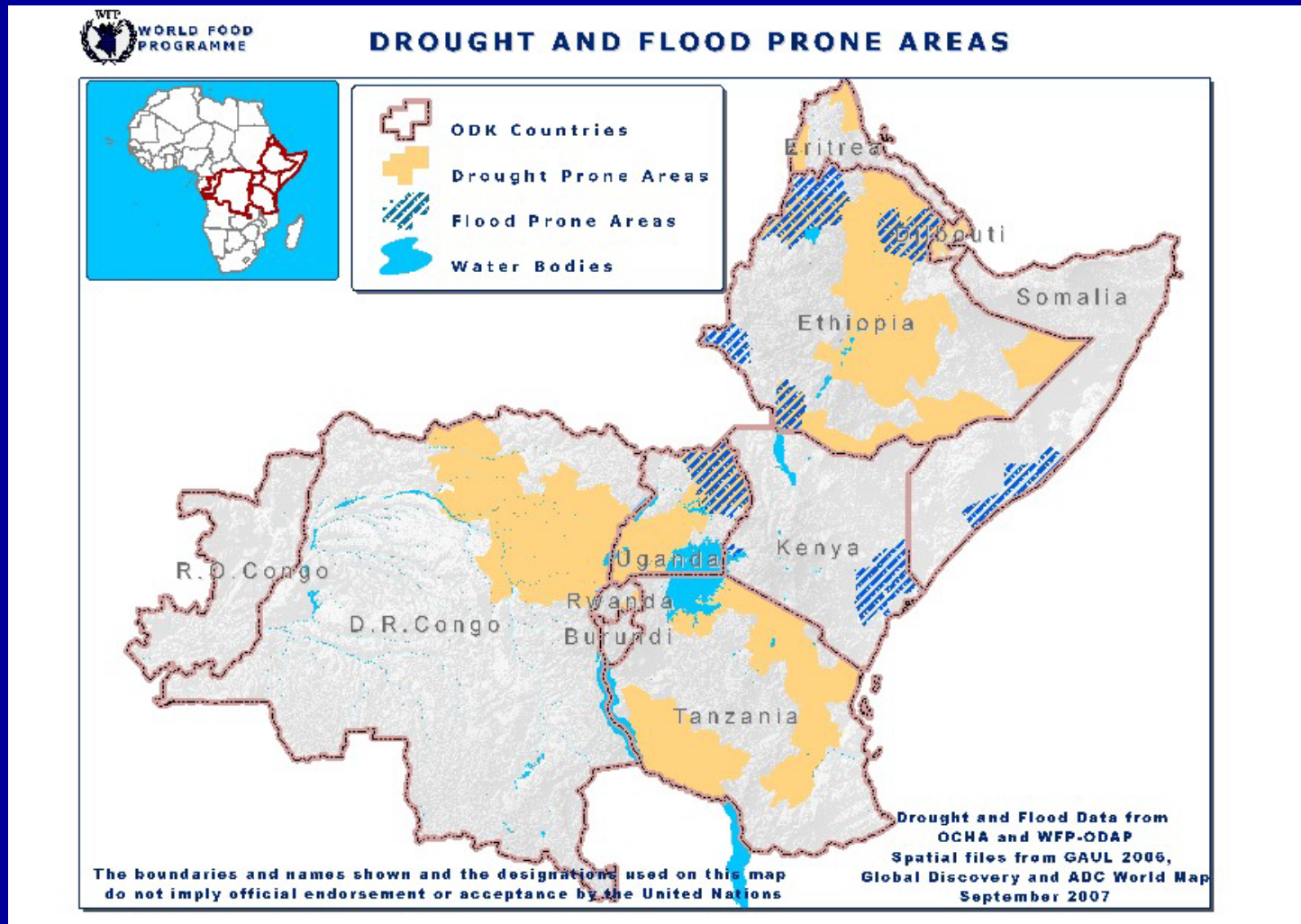
ODK

# Context

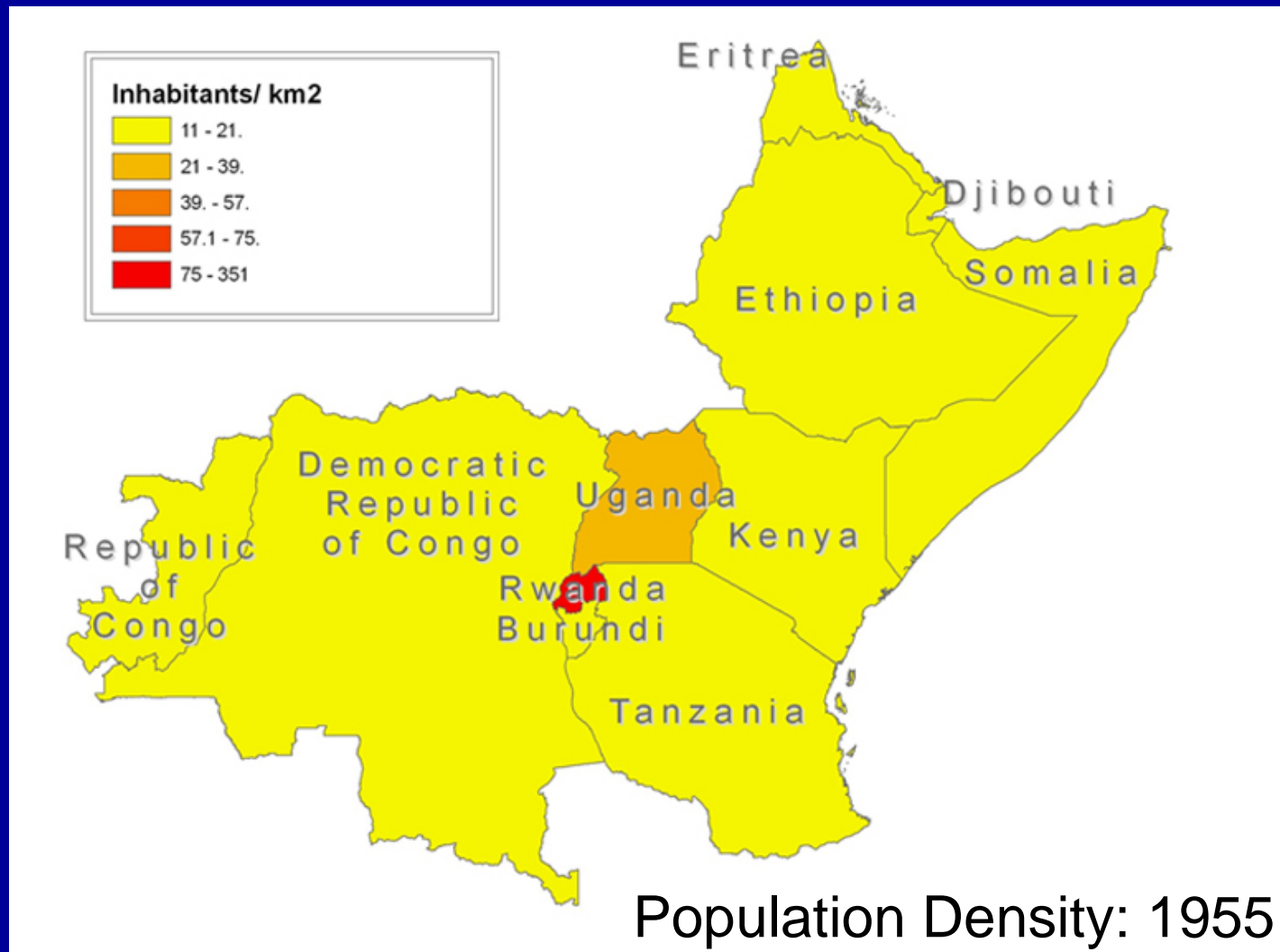
- climate change
- population growth
- conflict
- poverty
- environmental degradation and reduced resilience



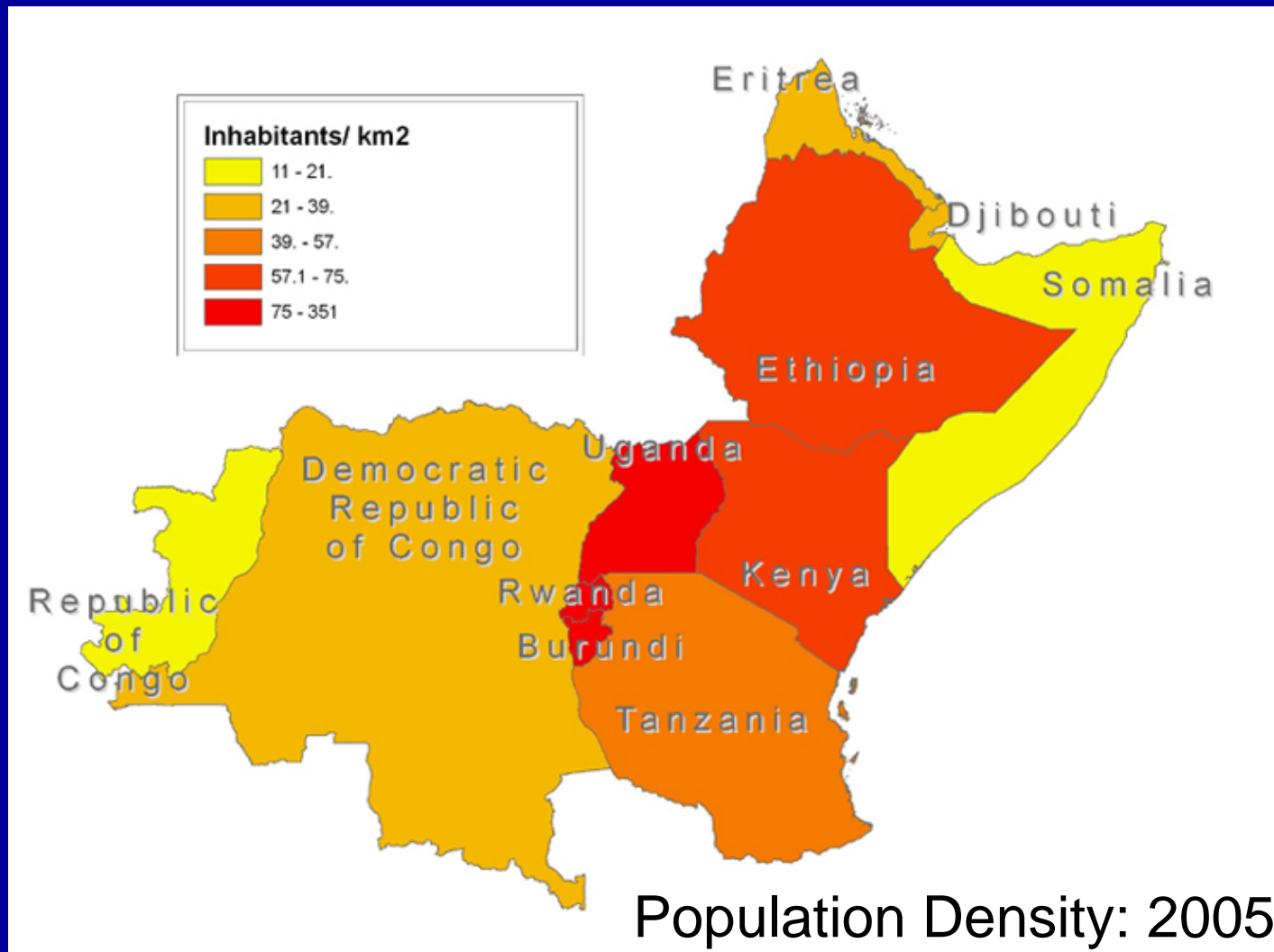
# Droughts and floods



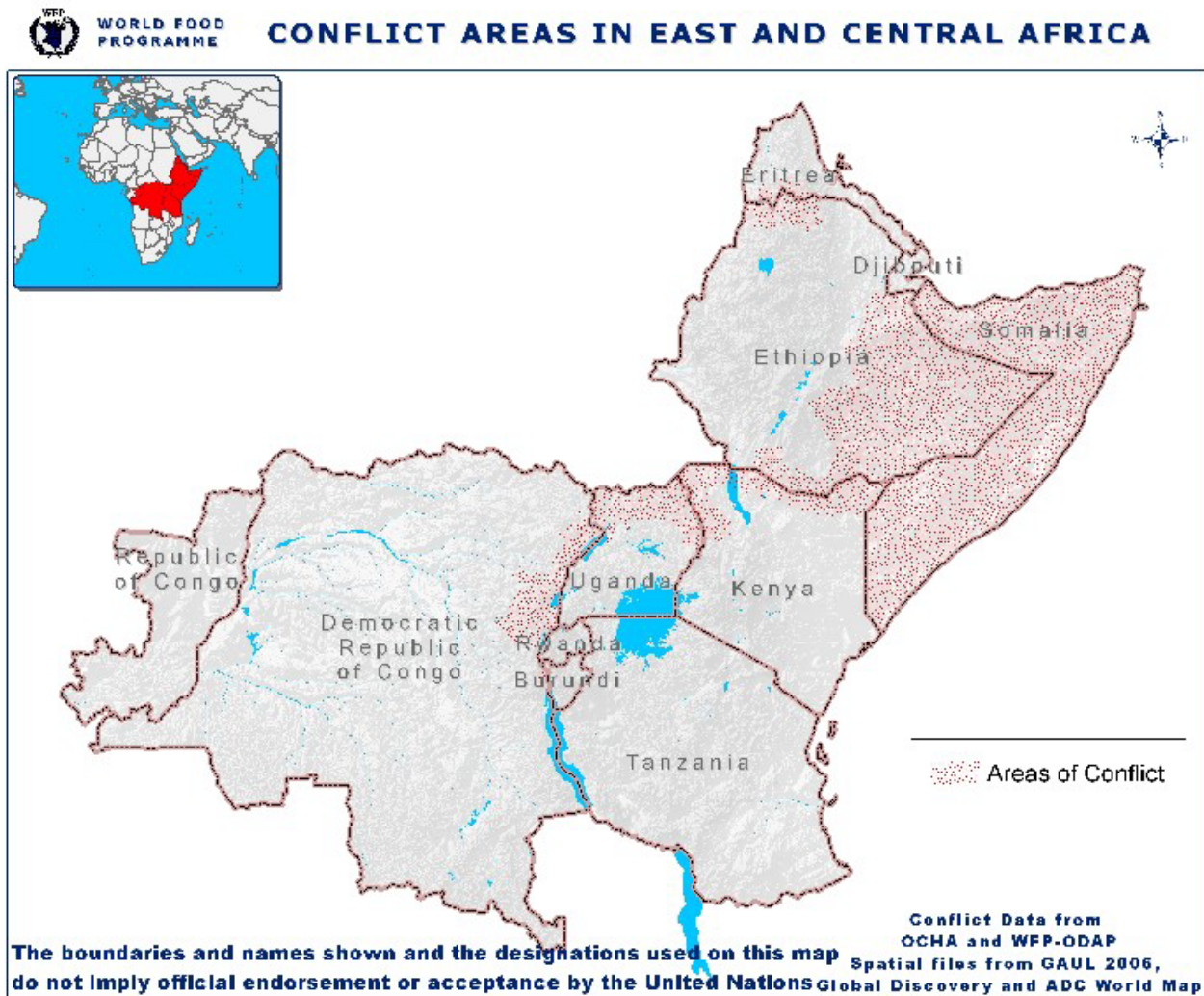
# Population growth



# Population growth



# Conflict



*“It is like being beaten, robbed and insulted at the same time.”*



beneficiary commenting on the effects of droughts and floods, 2006



Decreased food production

Vicious Circle



Environmental degradation



Hunger + short-term planning





**Increased food production + improved markets**

**Virtuous Circle**



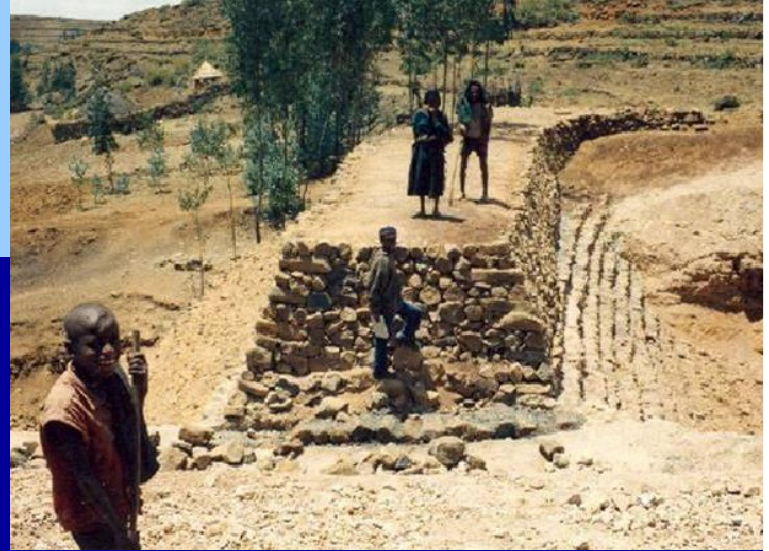
**Sustainable agricultural projects**



**Healthy communities, partnerships + long-term planning**

# Challenges and opportunities in building resilience

- Scaling up what works
- Strengthening partnerships
- Supporting markets



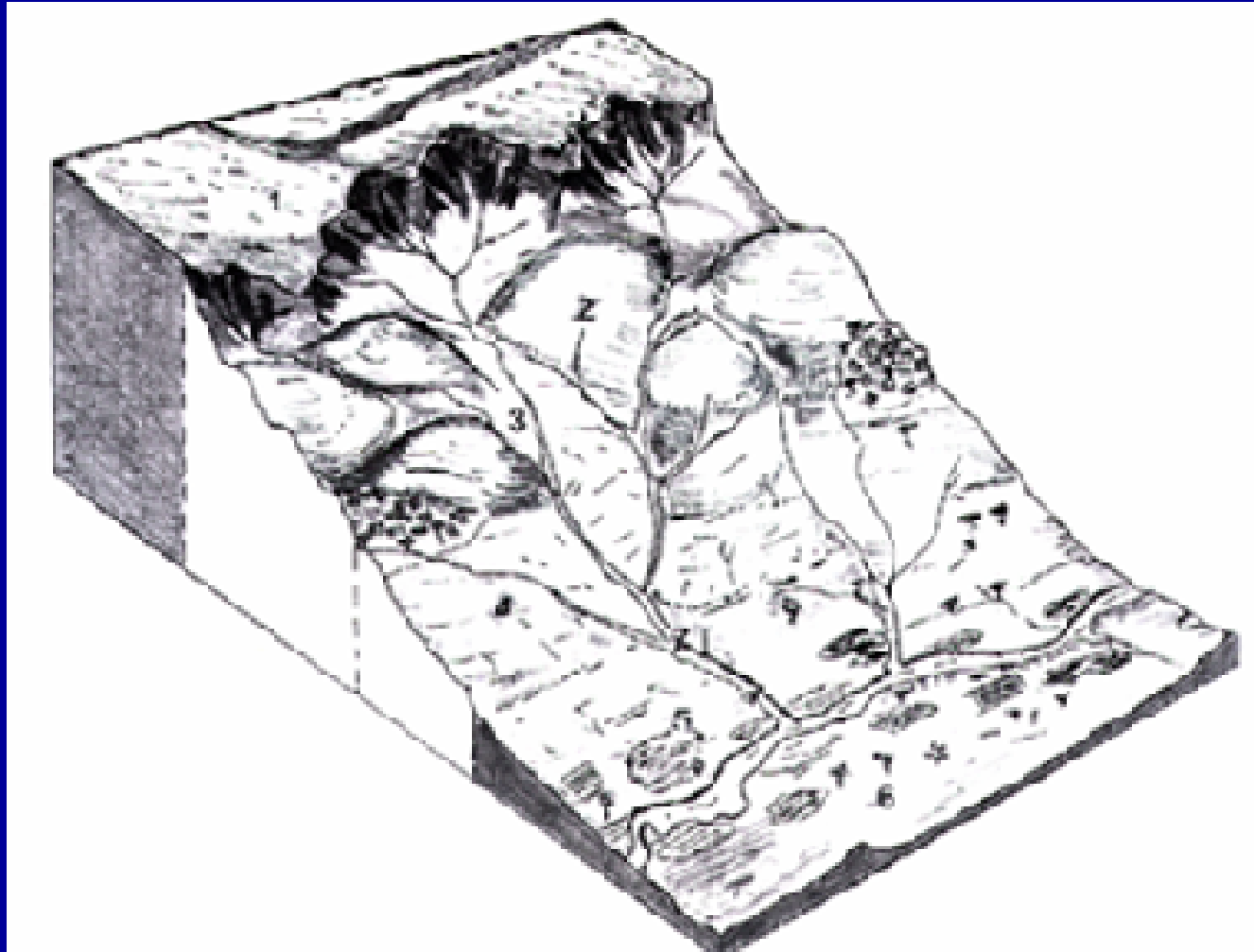
# Land degraded



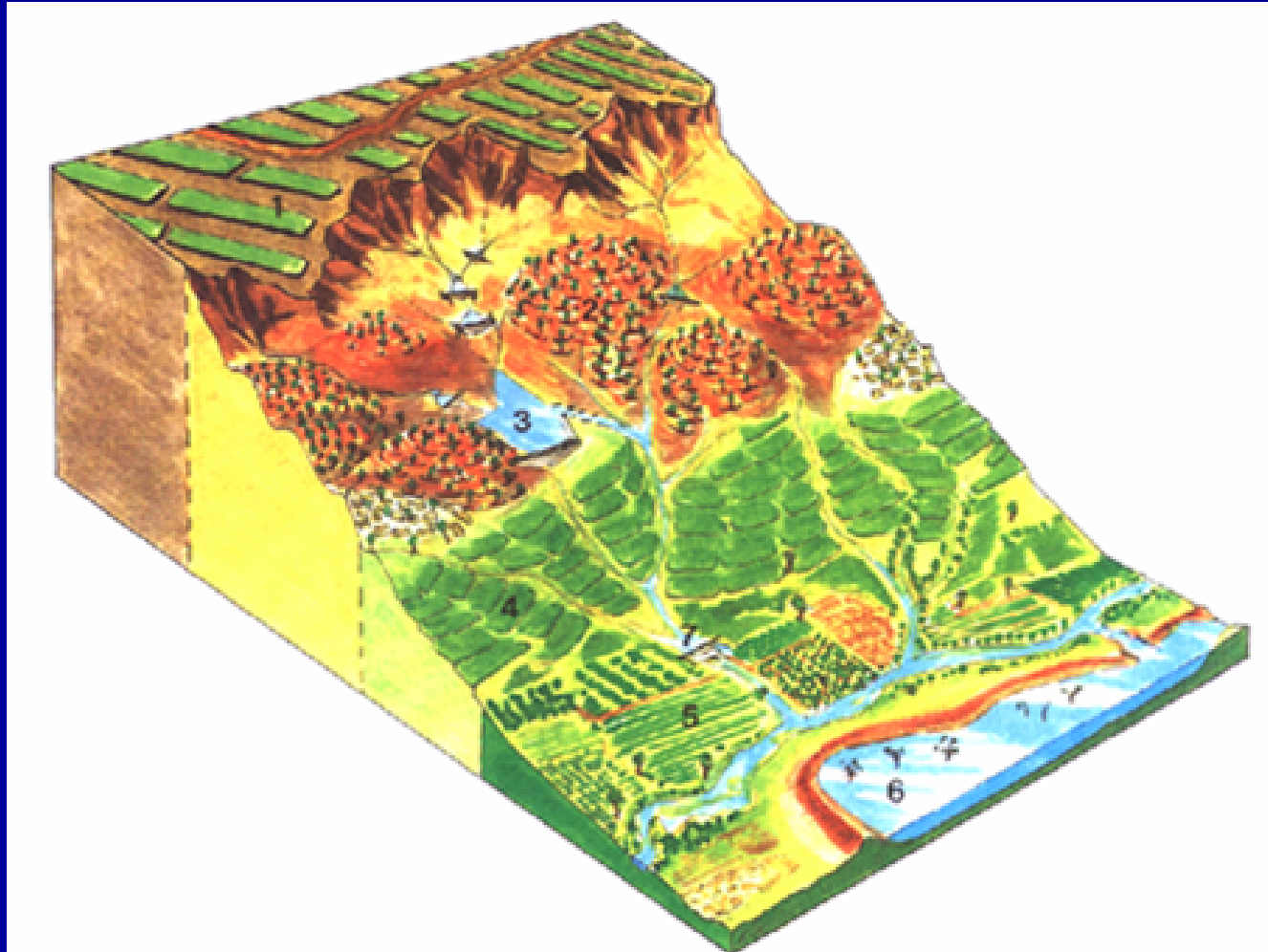
# Land reclaimed



# Relief to resilience



# Relief to resilience



# Accomplishments

- In Ethiopia, 200,000 HA of land rehabilitated in Tigray alone.
- 33,000 HA of land improved in Tanzania since 2002
- 44,500 HA of land rehabilitated in Rwanda since 1998
- 2,000 acres of trees planted in Uganda in 2006



# Our role





# Smoothing the transition

Ownership



Partnership

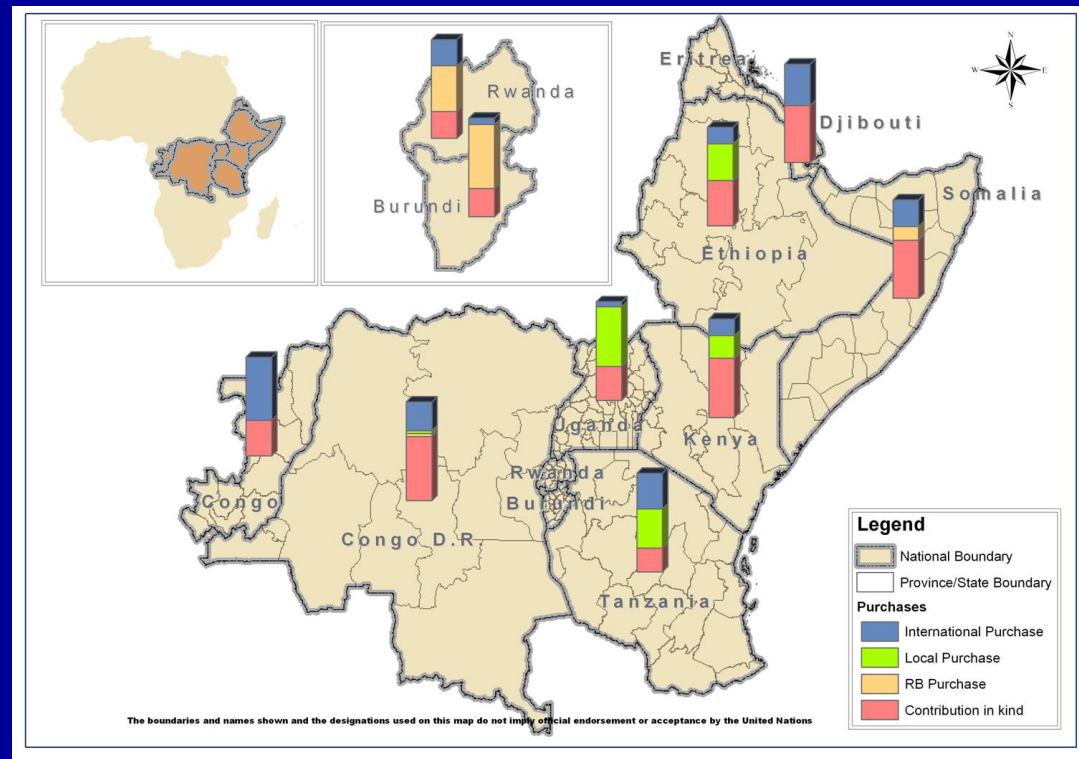
Leadership



Technical rigor

# Local/regional procurement

- 2004: 321,621 mt
- 2005: 402,023 mt
- 2006: 468,040 mt



Food purchases in 2006

# Small-scale farmers

7.7% of purchases from Uganda were from small-scale farmer groups. Most participants are women.



Rwakahunde farming group



Clare Kabakyenga  
Manyakabi Cooperative Manager

Thank you

