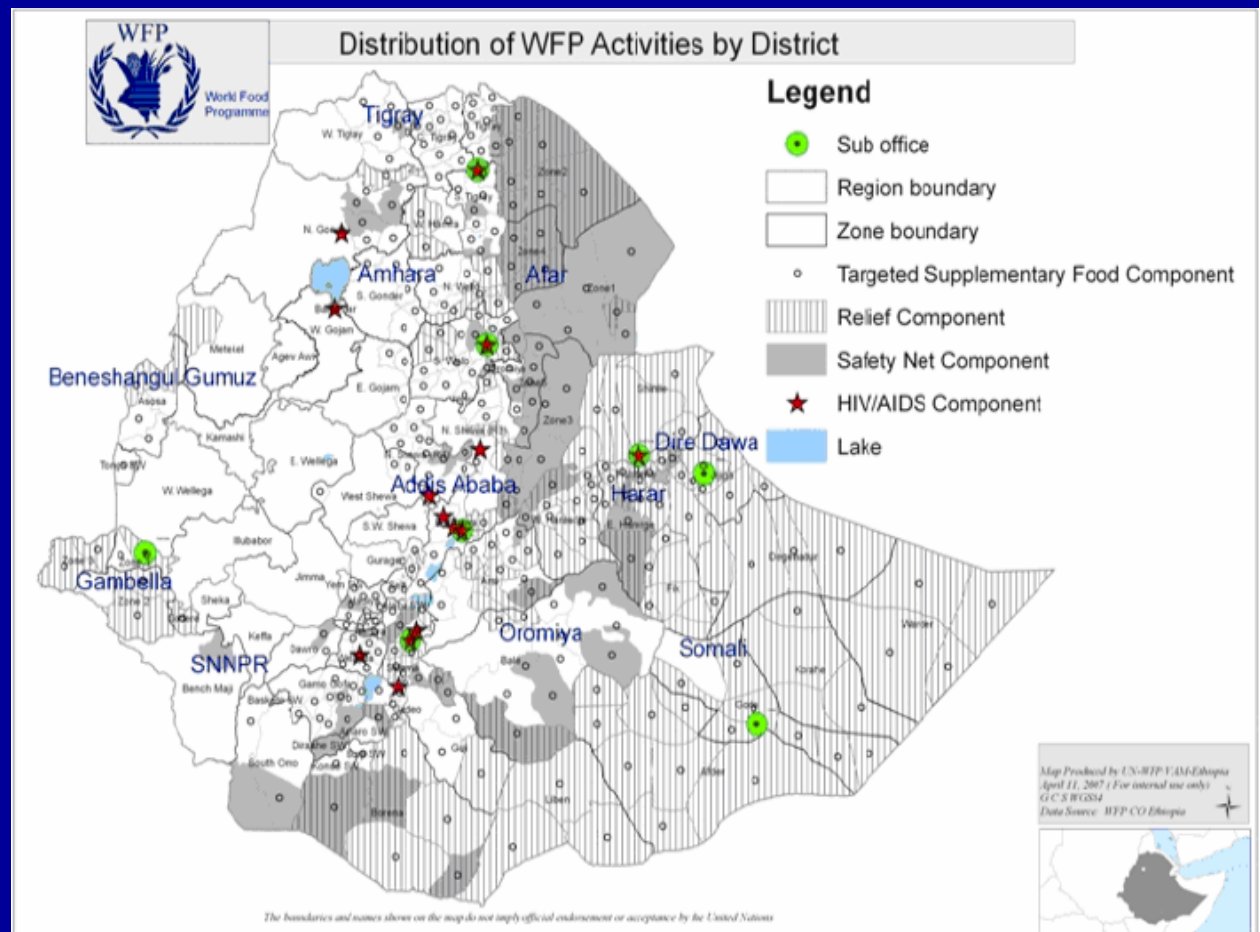


# ETHIOPIA PROTRACTED RELIEF AND RECOVERY OPERATION 10665.0

Responding to Humanitarian Crisis and Building Resilience to Food Insecurity

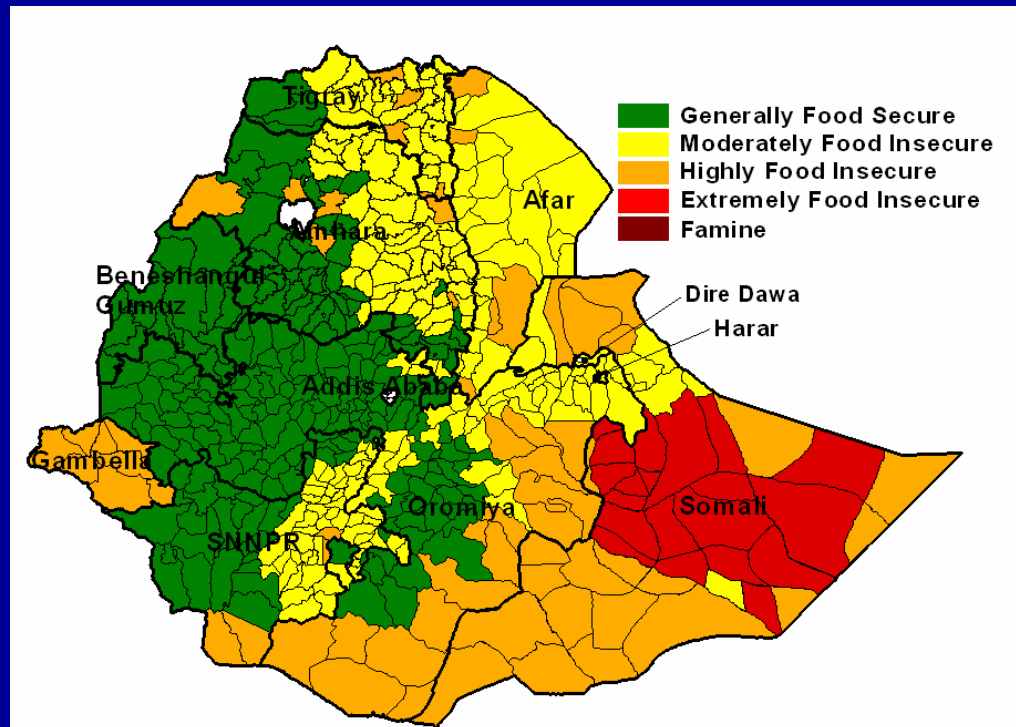
## Project overview:

- avg of 3.7 million beneficiaries p.a.
- 959,300 mt
- US \$561.9 million



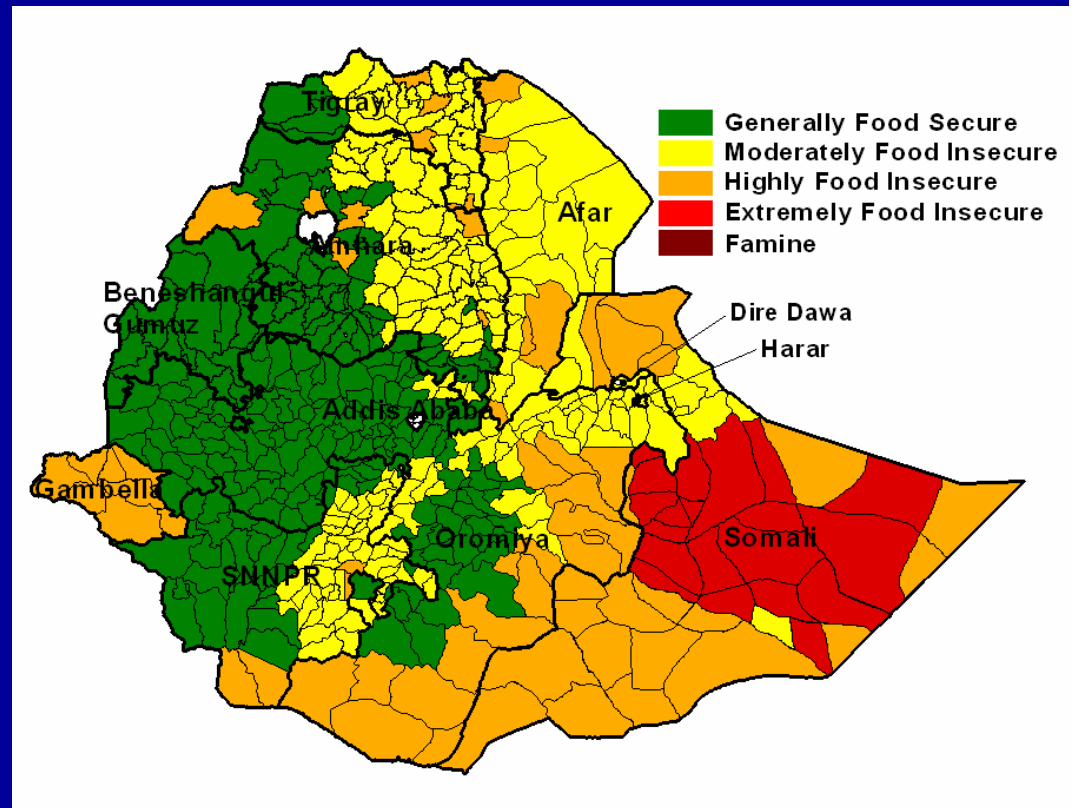
# Background Information

- population: 77 million – 80% rural
- climate change, environmental degradation
- increasing reliance on markets
- population pressure
- low rural investment



# Background Information

- rural poverty: 30 million (47.5% of rural population)
- 38% underweight
- 10.5% wasted
- >1.3 million HIV/AIDS
- UN HDI: 170 out of 177



# PRRO Objectives

- reduce vulnerability to acute food insecurity
  - major risks and large-scale need
  - strong partnership
  - harmonisation
  - learning cycle, innovation

*“One day to not need food aid...”*

# PRRO Objectives & GoE Strategy

**Plan for Accelerated Sustainable Development to End Poverty (PASDEP)**

Disaster  
Prevention  
and  
Preparedness

Relief (SO1)

Food Security  
Programme

Safety Net (SO2)

Child Survival  
Initiative

Targeted  
Supplementary  
Food (SO3)

National AIDS  
Strategy

Urban HIV/AIDS  
(SO3 & SO4)

**Support to Capacity Development through UN Country Team (SO5)**

# Crisis and Resilience

- Productive Safety Net Programme (PSNP)
  - 7.2 million beneficiaries
  - 6 months food gap and 3 months food ration
  - government procurement of food
  - community assets, protection



# Crisis and Resilience

- National Relief Response
  - 7 million vulnerable
  - declining since 2003
  - focus on capacity



# Nutrition and Health Crises

- Targeted Supplementary Food
  - 650,000 beneficiaries p.a.
  - joint programme with UNICEF
  - nutritious food, health and care practices
  - phase out to Health Service Extension Programme





# Nutrition and Health Crises

- Urban HIV/AIDS
  - 160,000 beneficiaries p.a.
  - complements drugs and therapy
  - support to OVCs
  - phase out to self-resilience



# Summary of Resource Implications

Beneficiaries			
Component	2008	2009	2010
Safety Nets	2,390,000	2,420,000	2,460,000
Relief	853,000	792,000	688,000
TSF	737,000	663,000	597,000
HIV/AIDS	155,000	164,000	164,000
Total (excl TSF overlap)	3,796,000	3,734,000	3,634,000

# Summary of Resource Implications

METRIC TONNES			
Component	PRRO 10362	2008-2010	DIFF %
<b>Safety Nets</b>	523,000	445,717	<b>-15%</b>
<b>Relief</b>	652,000	259,203	<b>-60%</b>
<b>TSF</b>	227,000	178,039	<b>-22%</b>
<b>HIV/AIDS</b>	37,210	76,368	105%
<b>Total</b>	<b>1,439,210</b>	<b>959,327</b>	<b>-33%</b>

# Handover Strategy

- government capacity
- linkages to broader programmes
- partner agreement on phase out
- support to cash-based programming
- procurement and market development