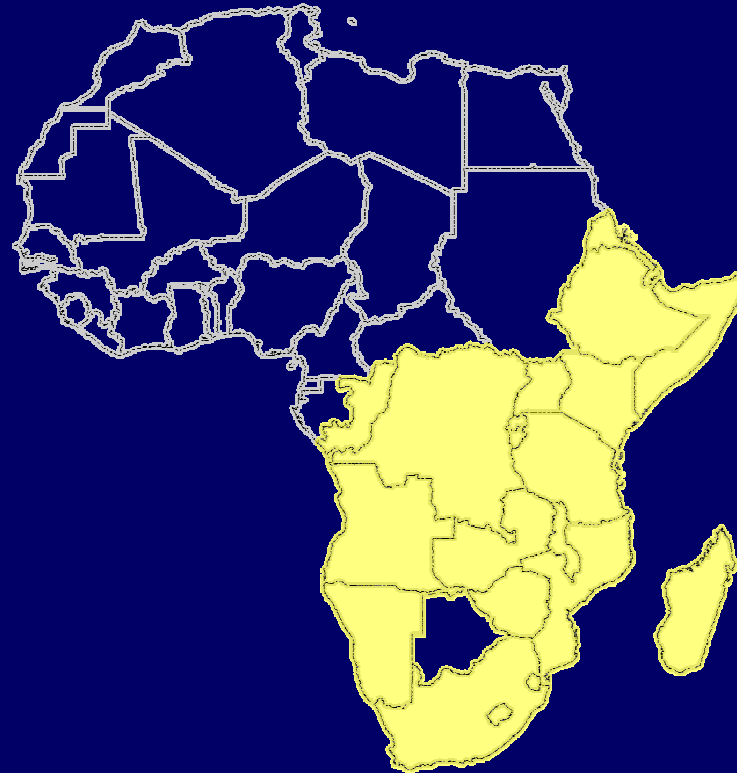


# Eastern, Central & Southern Africa



Angola  
Burundi  
Republic of Congo  
Democratic Republic of Congo  
Djibouti  
Ethiopia  
Eritrea  
Kenya  
Lesotho  
Madagascar  
Malawi  
Mozambique  
Namibia  
Rwanda  
Somalia  
Swaziland  
Republic of Tanzania  
Uganda  
Zambia  
Zimbabwe

OMJ

Executive Board  
February 2008

---



# vulnerability on the move

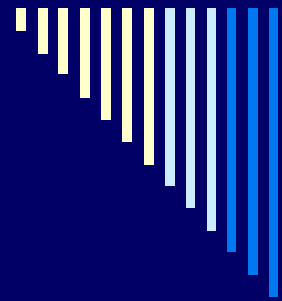
- droughts & floods
- displacement
- HIV/AIDS
- tomorrow?

flooded roads in Mozambique, 2008

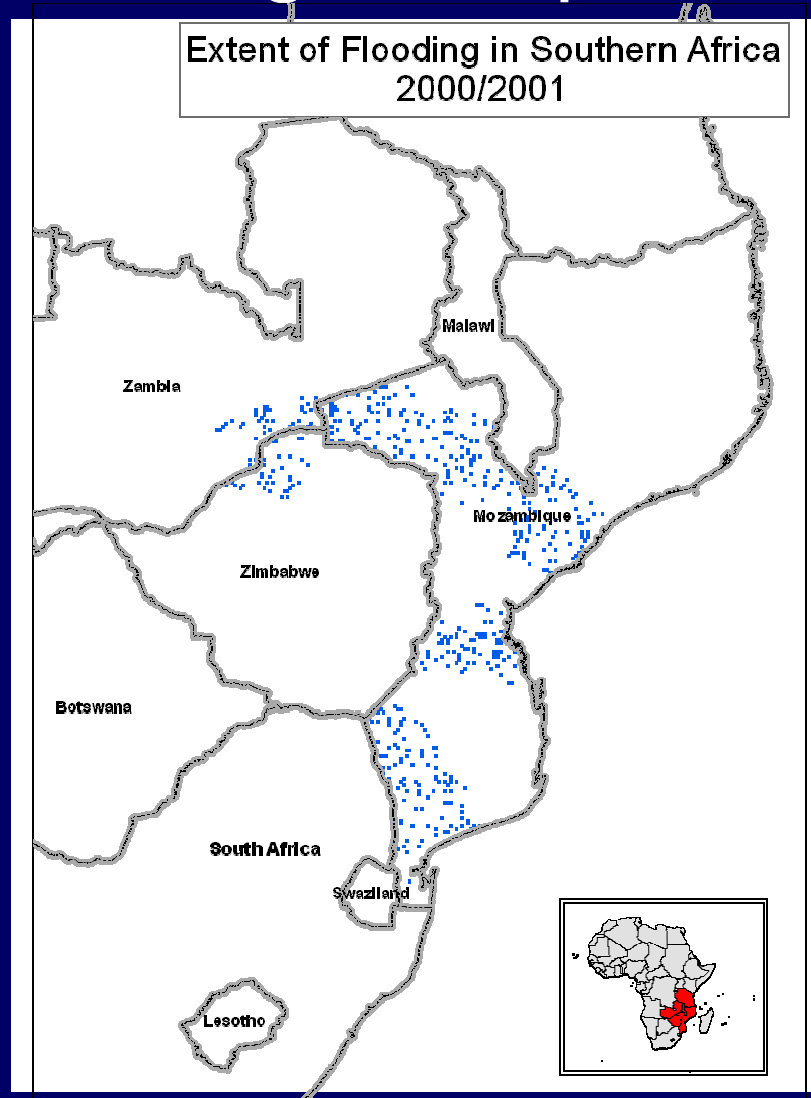


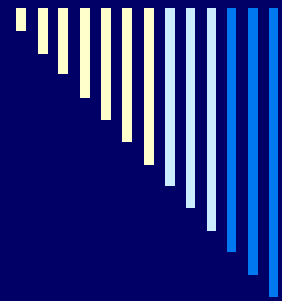
Kibera slum, Nairobi: 15 January 2008

---

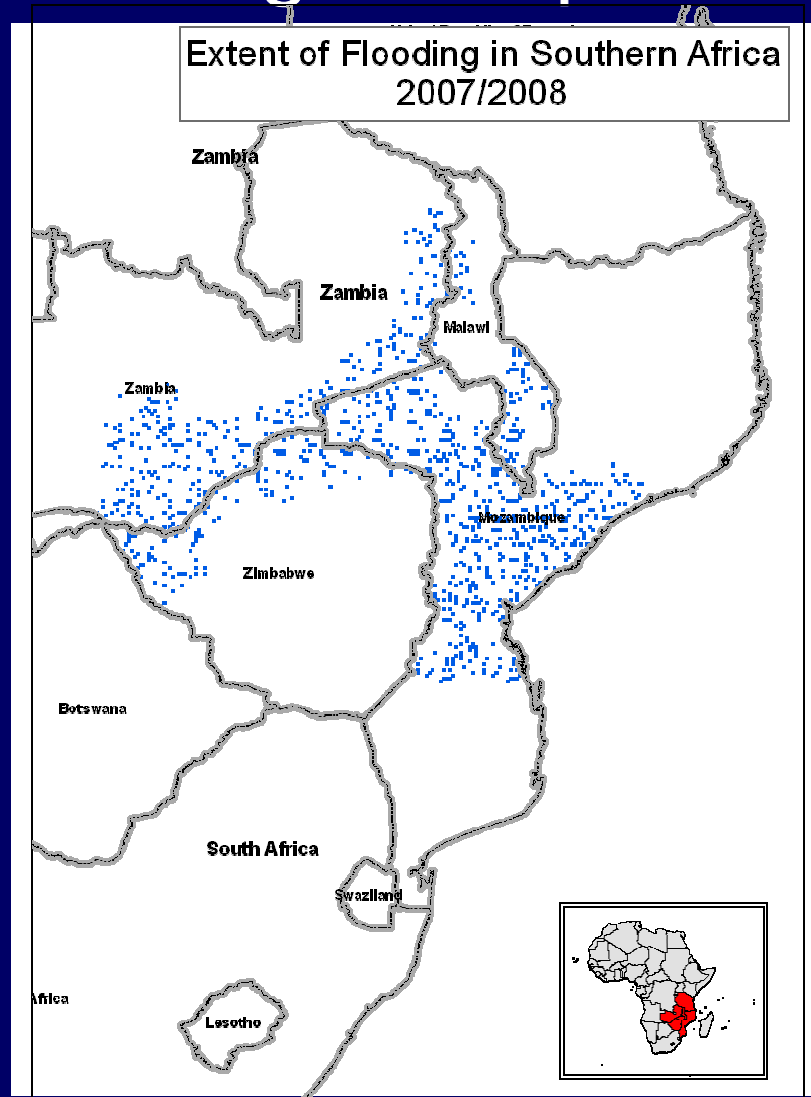


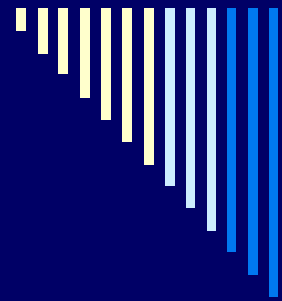
# floods & droughts: a pervasive pattern



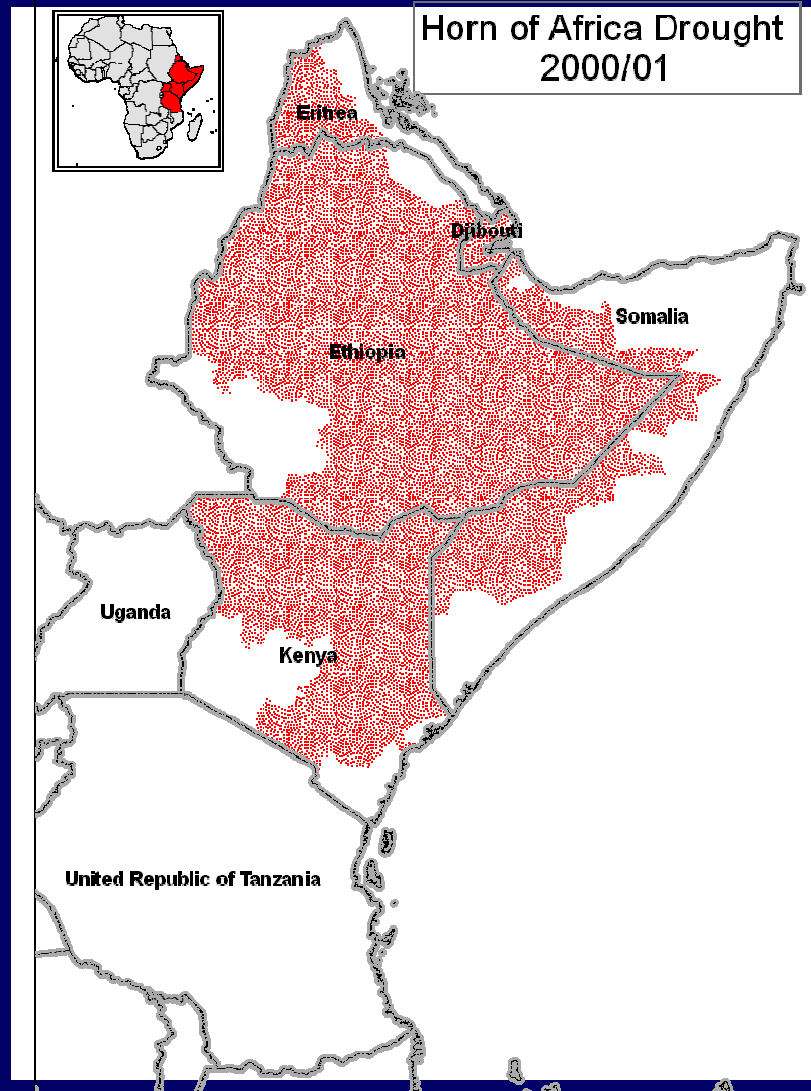


# floods & droughts: a pervasive pattern

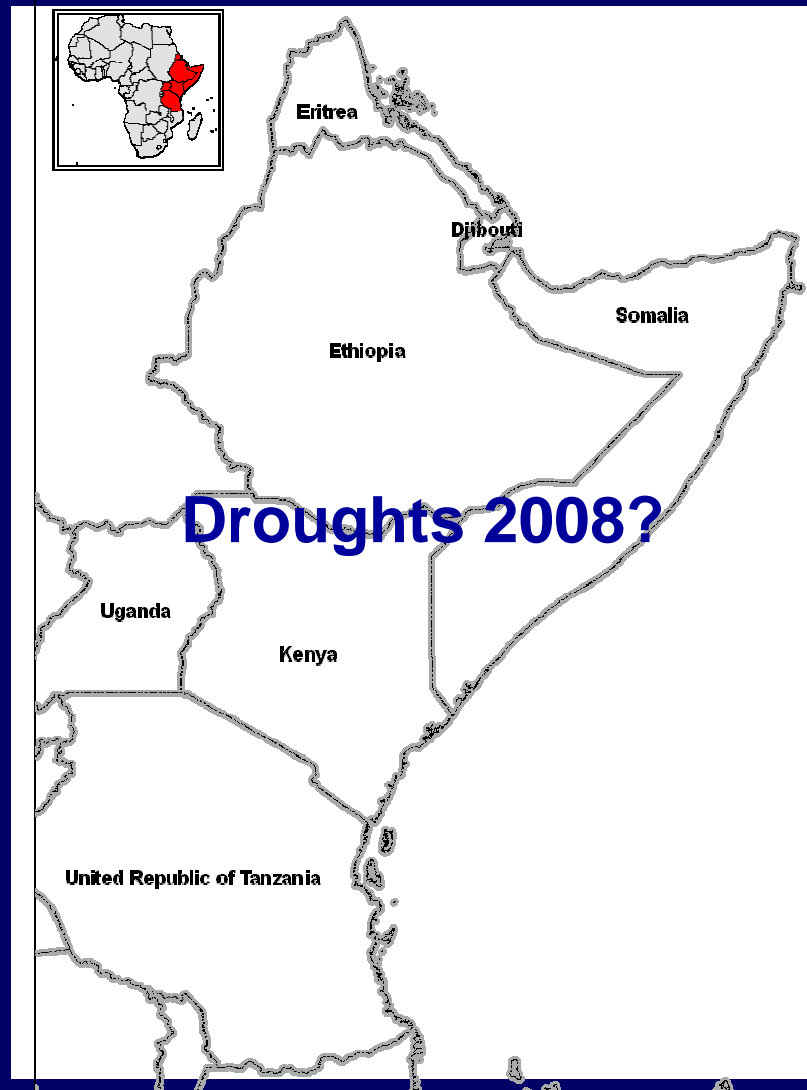


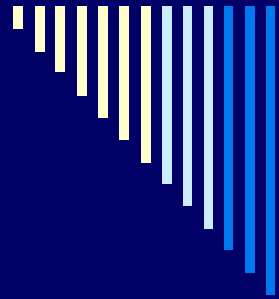


# floods & droughts: a pervasive pattern

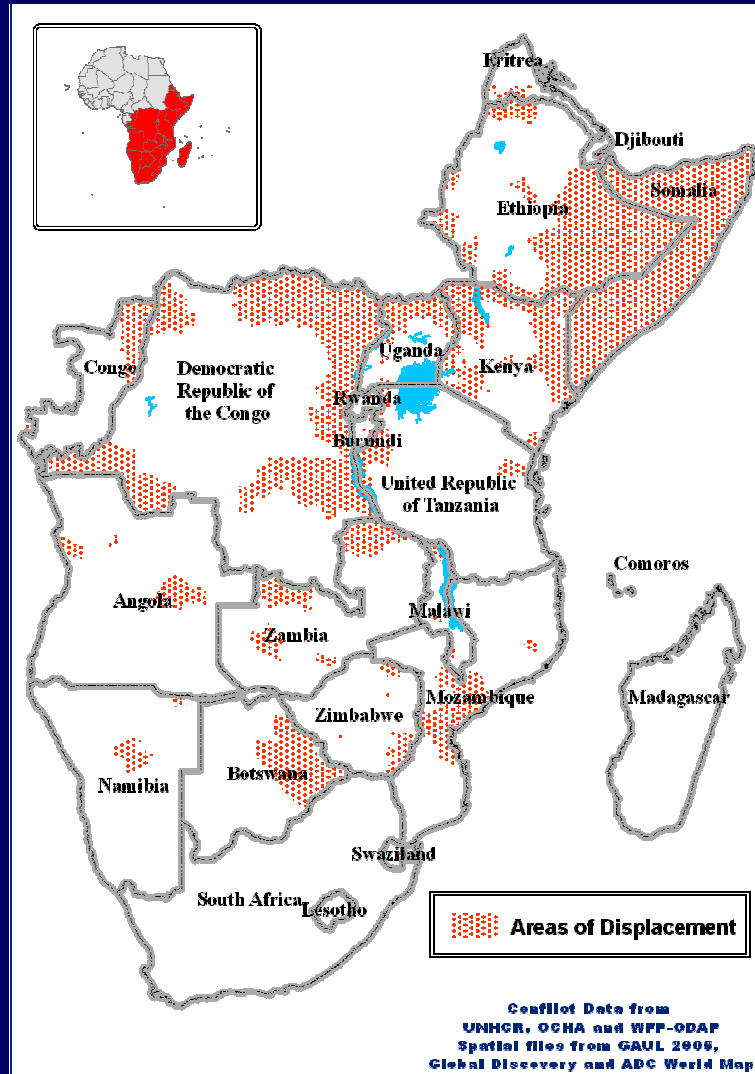


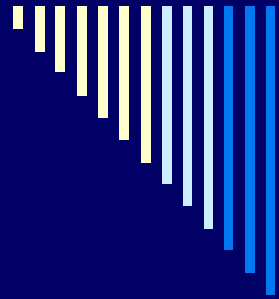
# floods & droughts: a pervasive pattern



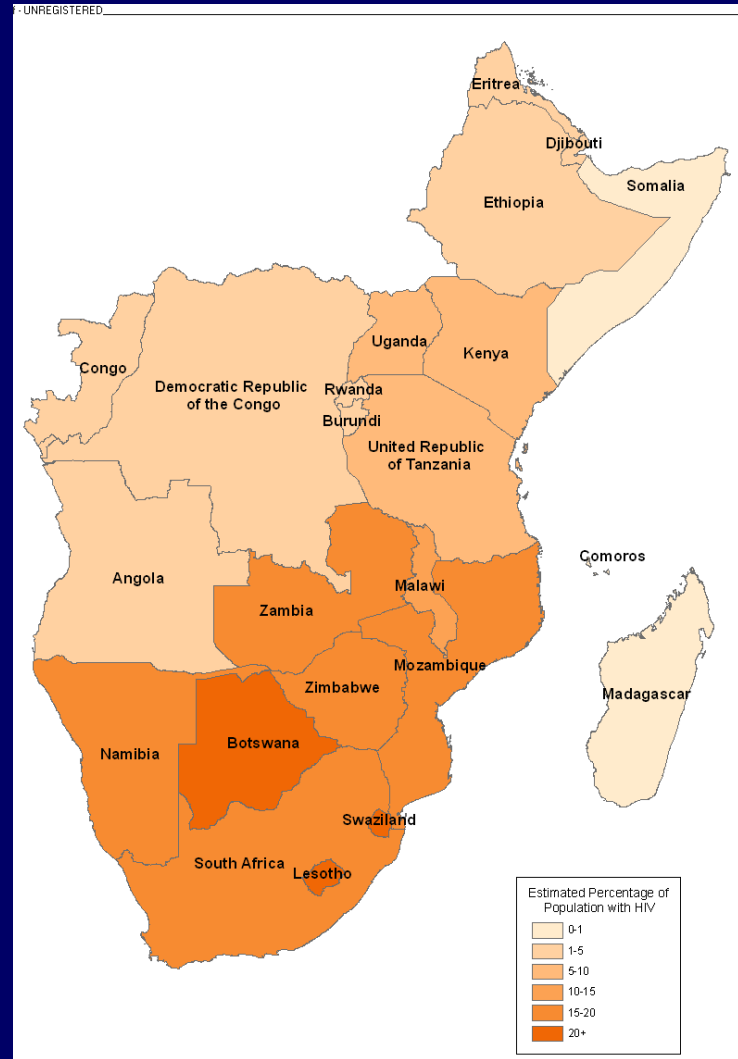


# displacement

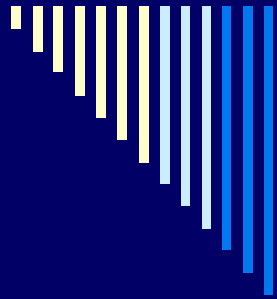




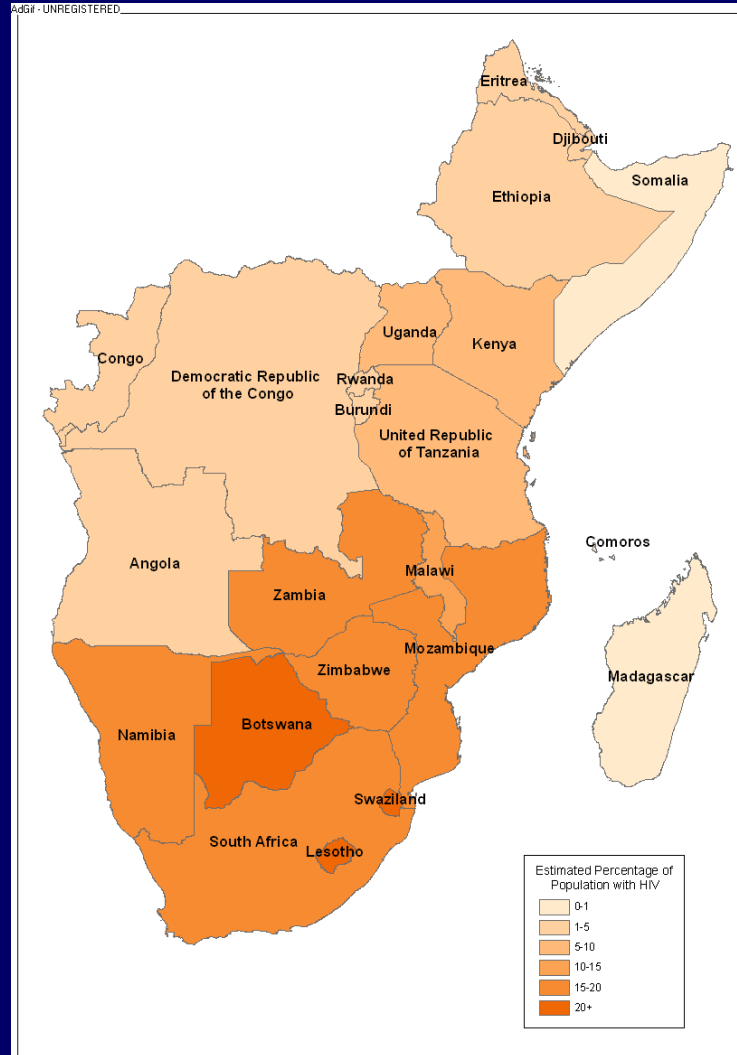
# HIV/AIDS: a festering crisis







# HIV/AIDS: a festering crisis



---



# the unexpected crisis

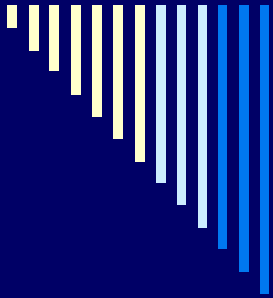


---



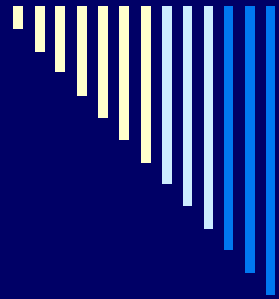
# the anticipated crisis





elsewhere  
in the  
region

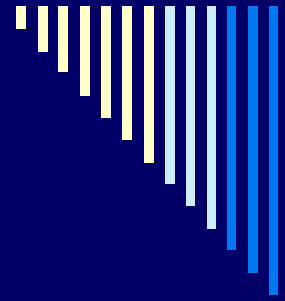




# the most affected

- women and children
- HIV/AIDS affected families
- pastoralists
- urban poor
- other marginalized people

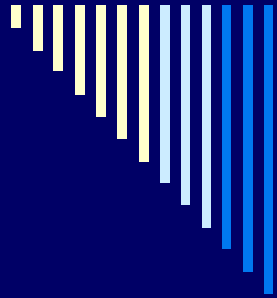




progressive vulnerability...

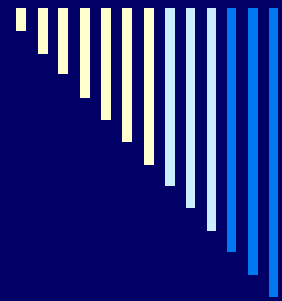


calls for collective responsibility



save lives

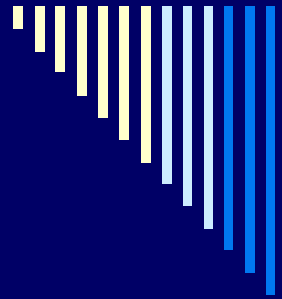




# protect livelihoods: promote adaptation and transition

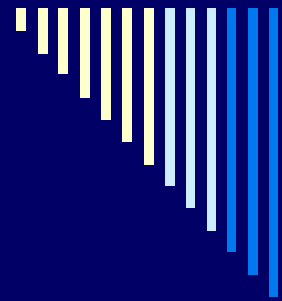






# reduce hunger and undernutrition





# enhance local capacity



Members of two farmer groups from the Manyakabi Cooperative, Uganda

