

Pakistan

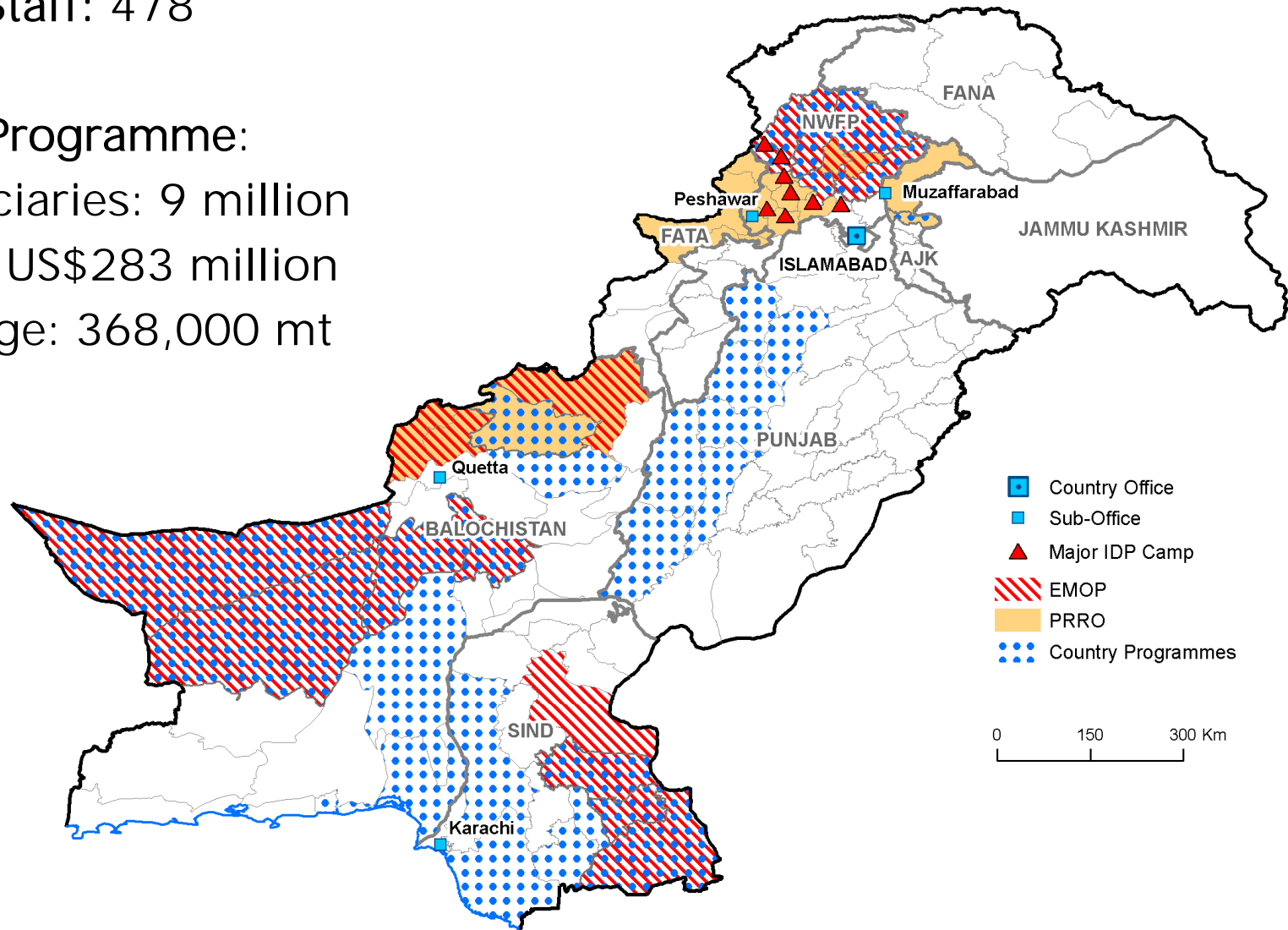
Total Staff: 478

2009 Programme:

Beneficiaries: 9 million

Value: US\$283 million

Tonnage: 368,000 mt



WFP Programmes before the crisis mid-April 09

<i>Project</i>	<i>Period</i>	<i>Beneficiaries</i>
CP Country Programme Pakistan (2005-2009)	Jan 04 –Dec 09	6.0 million
PRRO Post Earthquake Recovery Operation —South Asia	Apr 06 –Jun 09	2.1 million
PRRO Assistance to Food Insecure Households: Balochistan and Federally Administered Tribal Areas	Nov 07-Dec 09	718,000
EMOP Food assistance for the vulnerable populations affected by the high food prices in Pakistan	Oct 08– Sep 09	3.1 million
EMOP Food Assistance to internally displaced and conflict affected persons in Pakistan's NWFP and FATA	Mar 09- Nov 09	600,000
SO Logistics Augmentation	Mar 09-Jun 09	NA

Chronology

- August 2008: Military conflict across FATA and in Swat district of NWFP caused initial displacements
 - PRRO 10671 FATA
- March 2009: EMOP 10828 (March – November 2009)
 - 600,000 IDPs, Total cost 64 US\$ million
- 22 May 2009: Revision of the Humanitarian Flash Appeal
 - 1,5 million IDPs
- 25 May 2009: Declaration of Corporate Emergency after IDP numbers rose to over 2 million
- 25 May 2009: Approval of Budget revision to EMOP 10828
 - 1,5 million IDPs – 170 US\$ million

10 February 2009

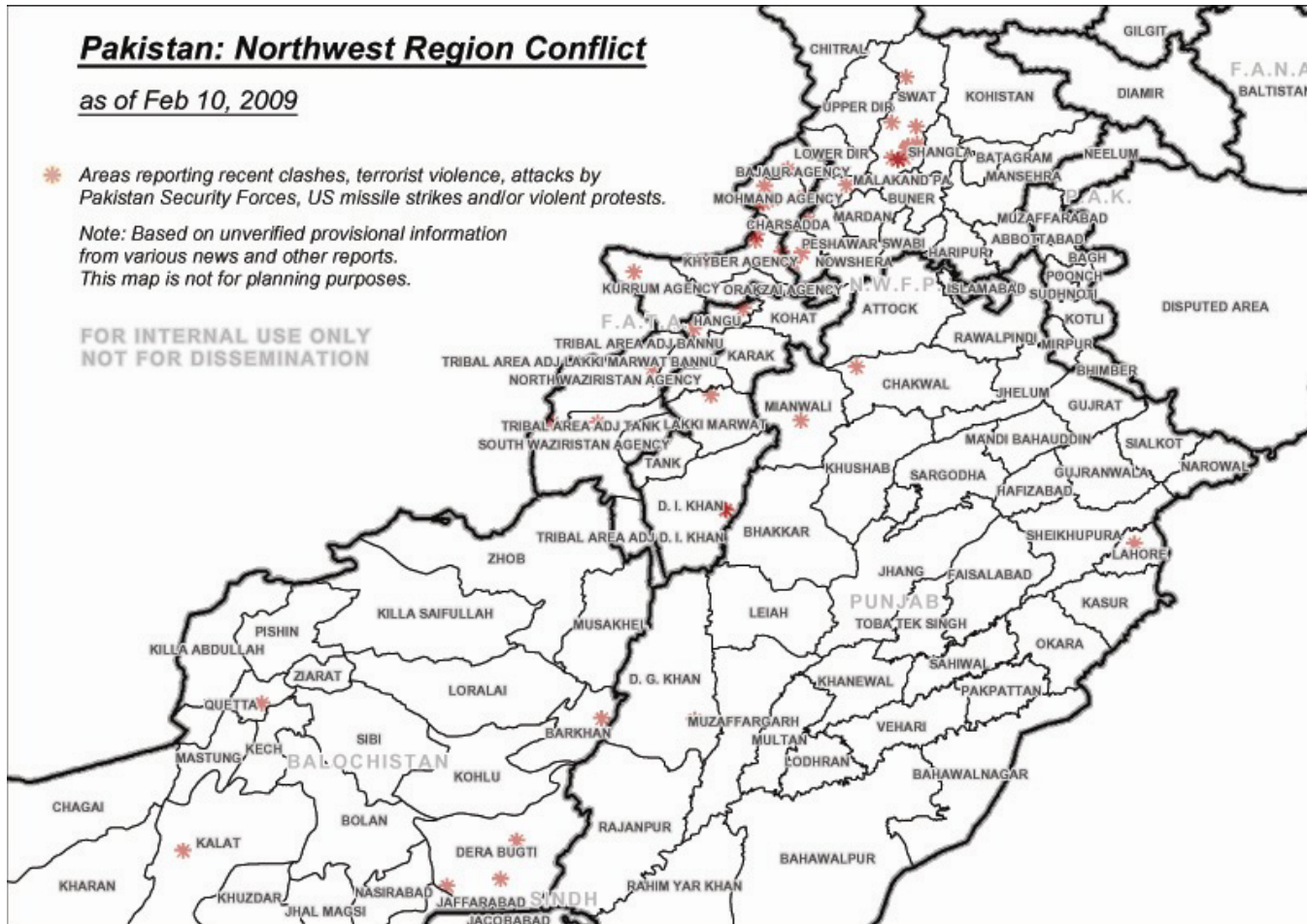
Pakistan: Northwest Region Conflict

as of Feb 10, 2009

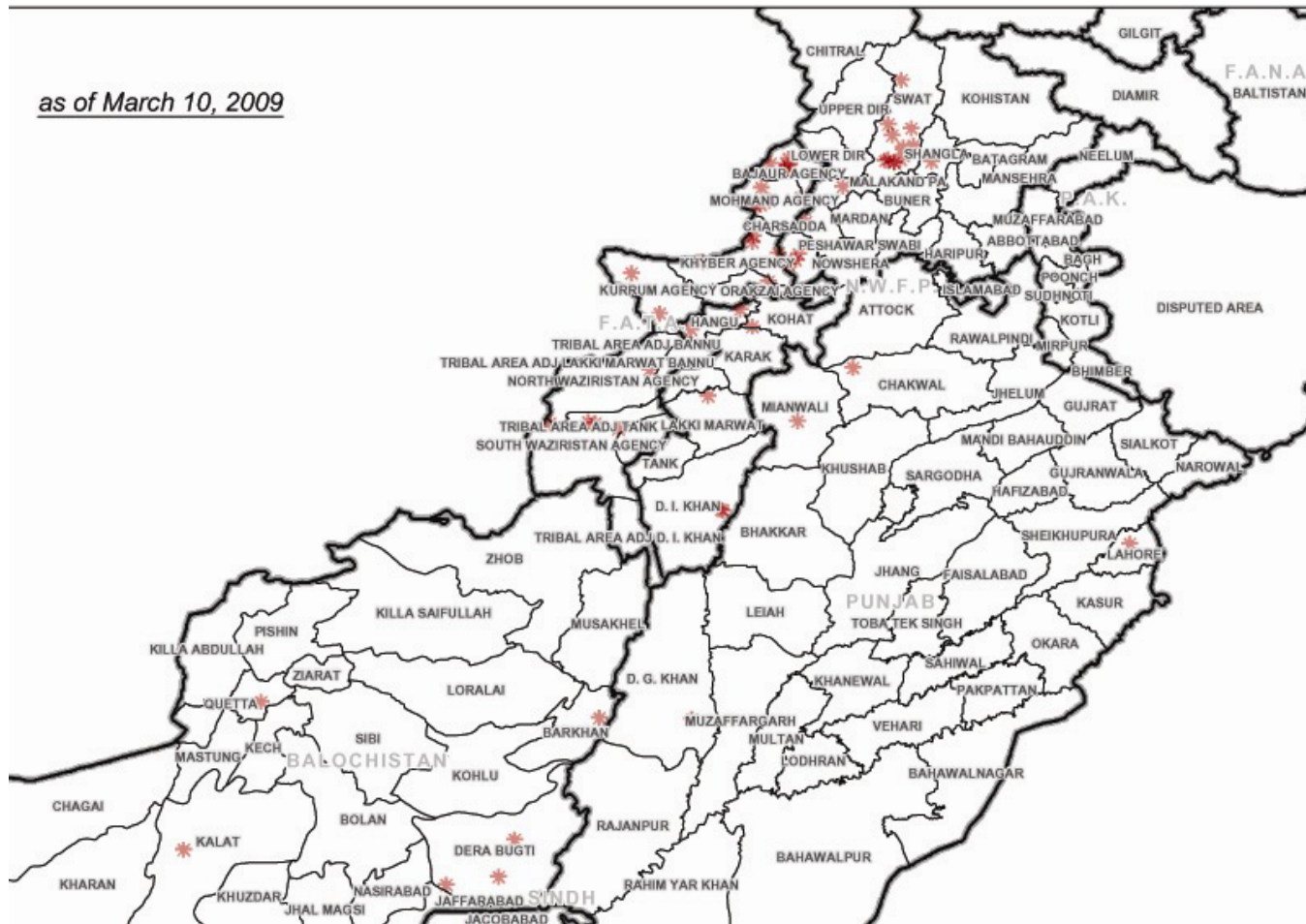
- * Areas reporting recent clashes, terrorist violence, attacks by Pakistan Security Forces, US missile strikes and/or violent protests.

Note: Based on unverified provisional information from various news and other reports. This map is not for planning purposes.

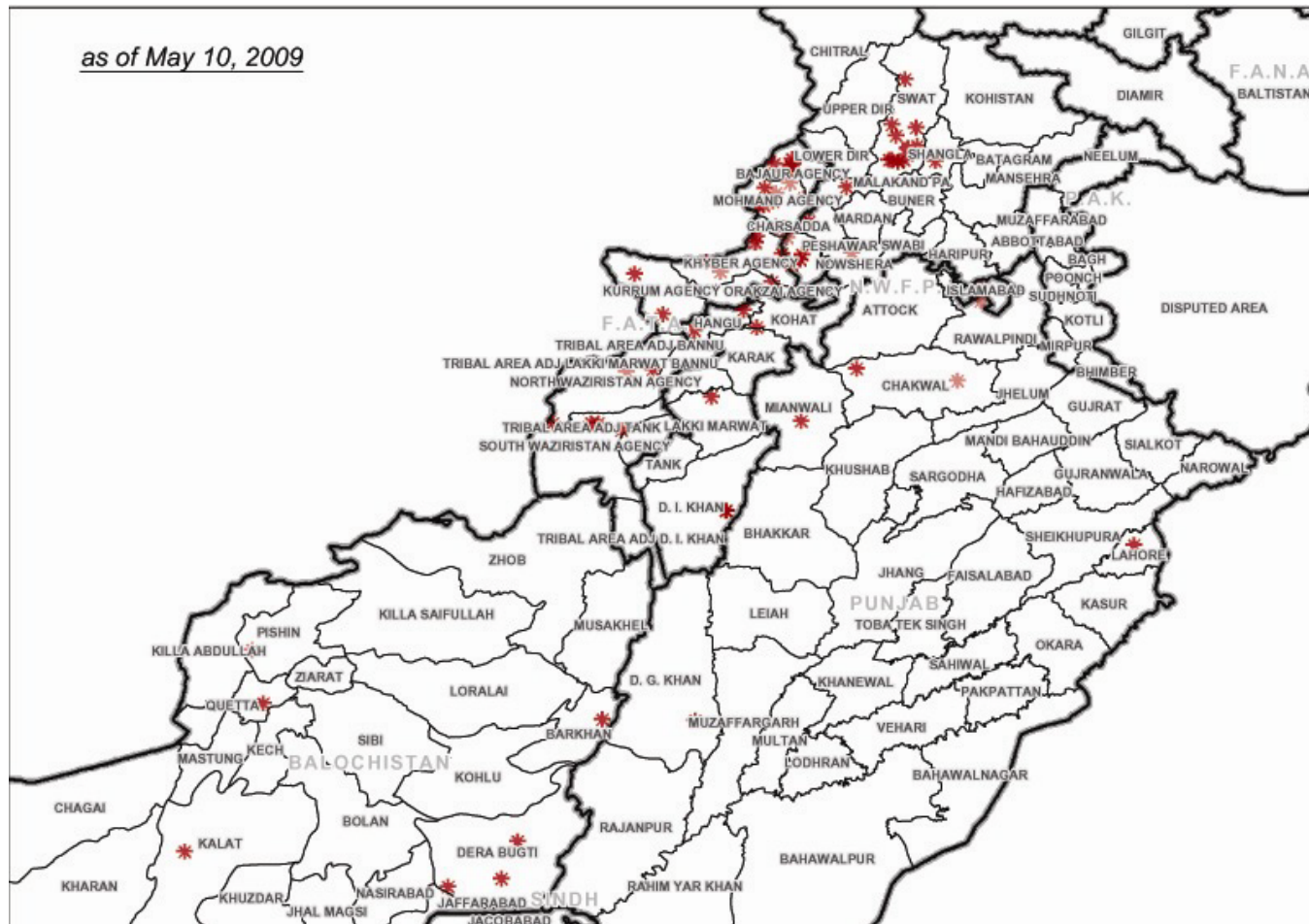
**FOR INTERNAL USE ONLY
NOT FOR DISSEMINATION**



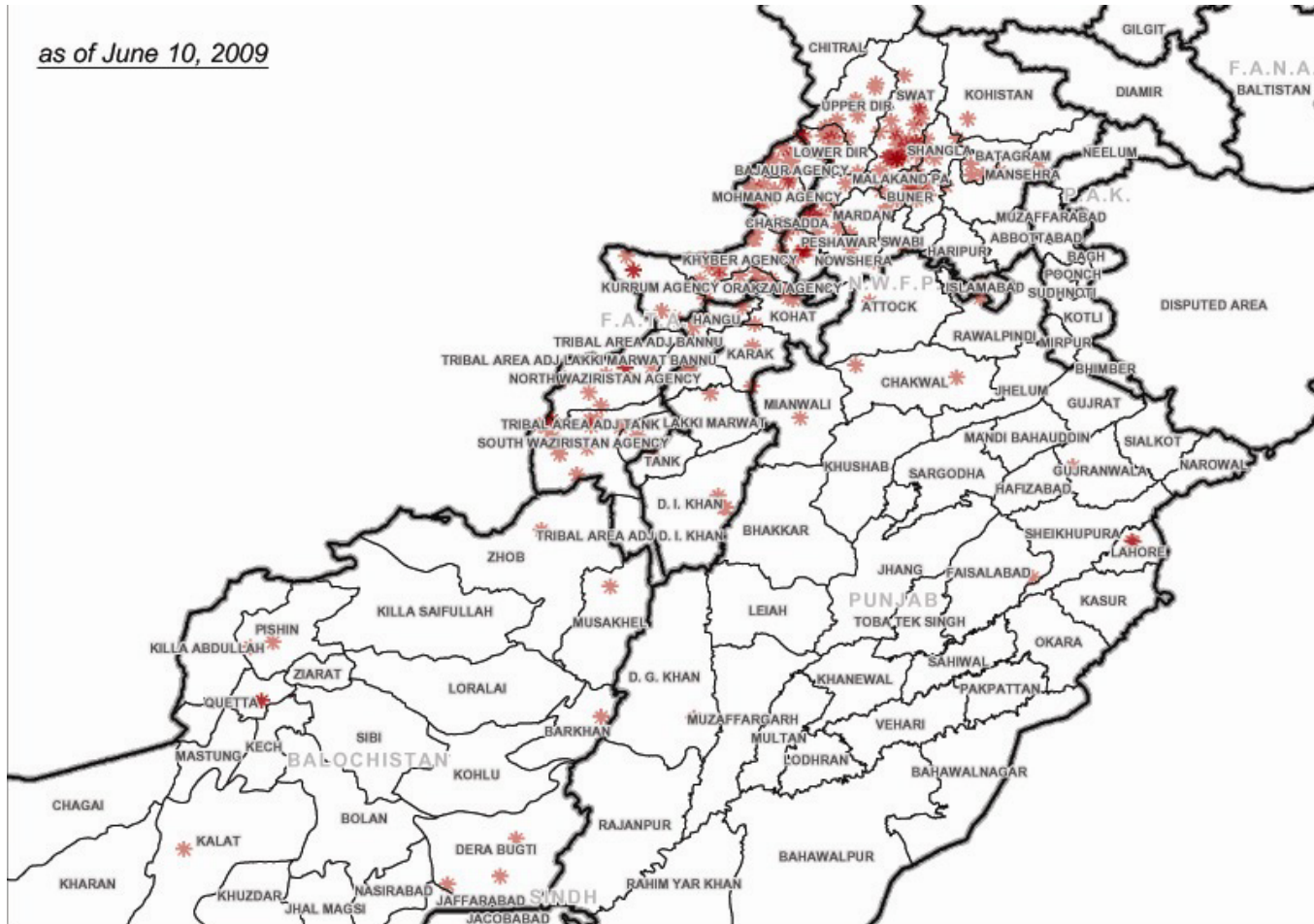
10 March 2009



10 May 2009



10 June 2009



Pakistan

- In May distributed monthly rations to about 2.6 million IDP's.
- Multiple registrations: no distributions in the early days of June during validation of IDP registrations.
- Current EMOP caseload of 1.5 million IDPs with a resource requirement of \$170 million. To date \$72 million has been received with secure pledges for a further \$55 million.
- Budget Revision to reflect about 2.2 million plus 15% contingency and to increase the resource requirement to \$250/280 million.

Staffing

- The total number of WFP staff in Pakistan now stands at 478
 - WFP Country Office Islamabad (Existing staff 97; Incoming staff 9; TDYers 8)
 - WFP Sub-Office Peshawar (Existing staff 155; Incoming staff 58; TDYers 17)
 - WFP Sub-Office Karachi (Existing staff 48 ; Incoming staff 5)
 - WFP Sub-Office Quetta (Existing staff 52; Incoming staff 3)
 - WFP Sub-Office Muzaffarabad (Existing staff 15)
 - WFP Logistics Hub, Lahore (Existing staff 8; Incoming staff 3)

IDPs Registration Process

IDP are commonly segregated into two types:

IDPs living in the Camps – 20%

UNHCR is providing Shelter.

IDPs living with host communities – 80%

.

Registration of IDPs

Living with Host Communities (Off- Camps)

- Social Welfare Department register the family and provide a YELLOW duplicate copy of [Registration Form](#), that is proof for IDP REGISTRATION

In- Camps

Registered by the:

- Commissionerate of Afghan Refugees (CAR) on behalf of UNHCR and Pink duplicate copy of registration form is being provided
- International Committee of the Red Cross (ICRC)

Data as at 4 June 2009, before temporary suspension of distributions

		<i>WFP-</i> <i>assisted</i>	<i>MT</i> <i>distributed</i>
Old Caseload	Host Communities	337,767	5,431
	Camps	81,971	1,363
New Arrivals	Host Communities	2,563,728	38,529
	Camps	110,953	1,723
	Grand total	3,094,419	47,046

LOGISTICS

- The common humanitarian logistics base in Pirpai dispatches an average of 2,000 – 2,500 mt of food to the distribution points on a daily basis.
- It is planned to install 16 storage tents by mid-June 2009. Space will be made available for use by all agencies and NGOs upon request.
- At present, 32 humanitarian hubs have been established for food distribution to IDPs within the host community. Another 10 distribution points have been set up within the camps.

ICT

WFP

- The ICT unit is preparing 140 computers and other communications equipment required for implementing online data verification at EDPs.
- The wireless phones at Pirpai warehouse have been installed and are up and running.
- ICT requirements of the new logistics hub in Bhakkar have been identified.

Food basket / Monthly Ration

(per family)

General Food Ration (kg)						Supplementary Feeding	
Fortified wheat flour	Pulses	Vegetable oil	Sugar	Iodized salt	Black Tea	HEB	RUSF
80	8	4.6	4	1	0.3	5	1.5

Quantity distributed, by commodity (under the PRRO)

IDPs	Tonnage
	Achieved
October	1,078
November	346
December	1,077
January	3,643
February	5,780
Total	11,924

Quantity distributed - March, April and May, under current EMOP

Wheat / WF	Pulses	Veg.oil	Iod. Salt	Black Tea	Sugar	HEB	RUSF
50,820	2,572	2,722	238	38	397	245	0

TOTAL 57,032 MT

Pipeline and Food Supply

- The operation faces pipeline breaks for
 - sugar, HEB and RUSF in June
 - oil, HEB and RUSF in July

RESOURCE REQUIREMENTS

- EMOP - \$250/280 million.
- Special operation 10526.0 (Logistics) - \$6.6 million.
- Urgent need for replenishment of HEBs and sugar.
- Twinning Government of Punjab 20,000 MT wheat flour per month - \$4 million per month.