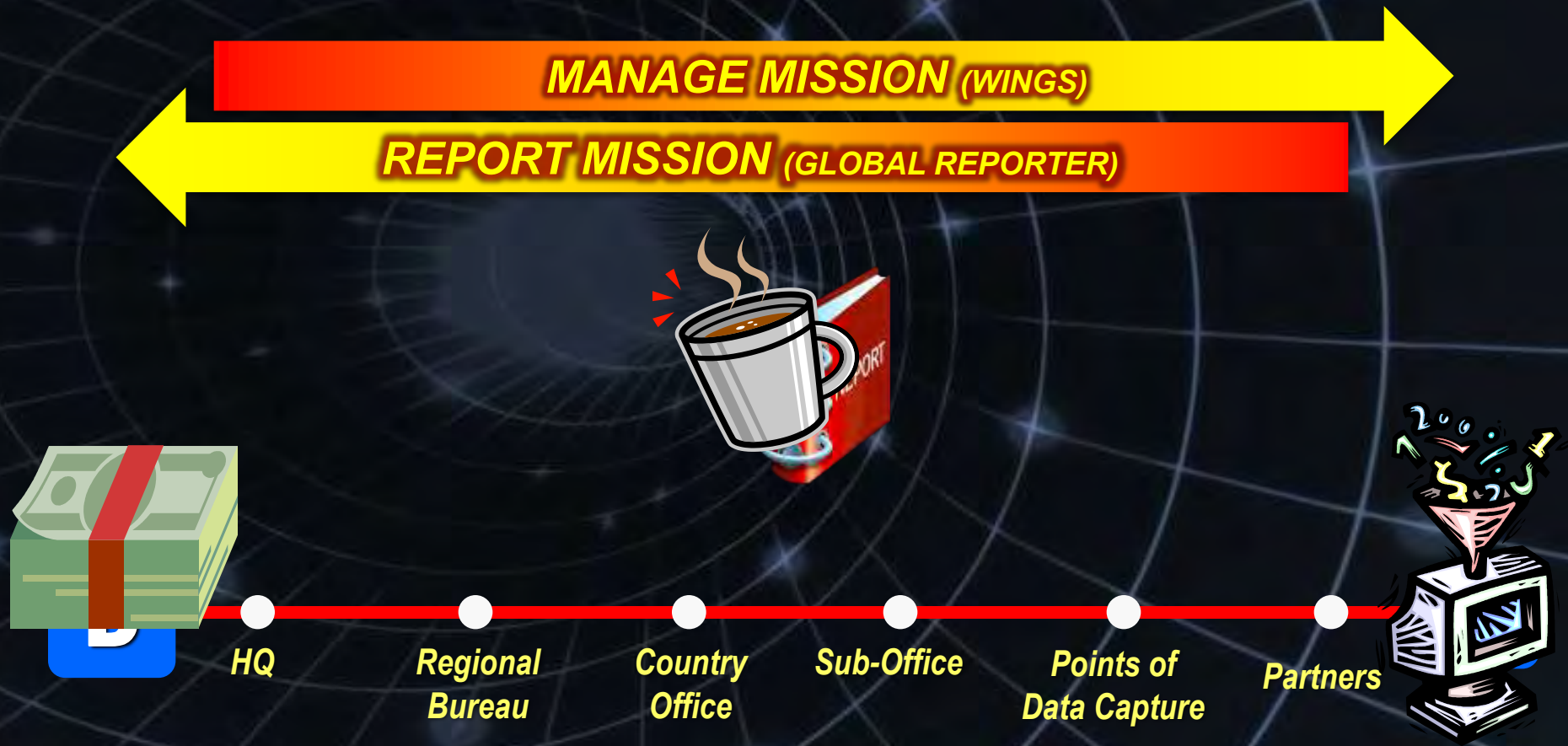


consistent, accurate, credible information



Building A Single Version of The Truth

manage information across the end-to-end core mission

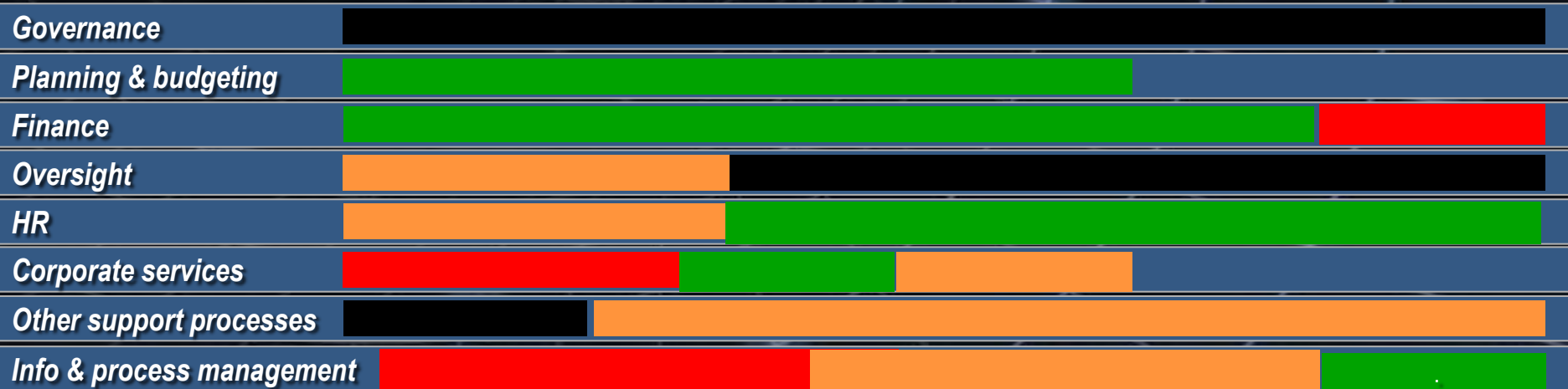


MANAGE MISSION

WINGS



Policy	Project design	Securing resources	Programming / resource alloc.	Implementation	Measuring and monitoring	Reviewing and reporting
Manage strategic planning	Perform needs assessment	Develop fund-raising strategy	Allocate strategic resources	Manage food procurement	Manage op. monitoring	Prepare financial statements/reports
Define policies	Design project	Mobilize resources	Programme contributions	Manage goods & services proc.	Manage perf. and risk mgmt	Manage donor reports (SPR)
Define country strategies	Approve project		Manage advances	Manage op. transportation	Manage staff performance	Manage Annual Perf. Report (APR)
Manage WFP food basket	Revise project			Manage logistics exec & inventory	Manage project funds	Manage evaluations
				Implement food Distributions		



WINGS 2009

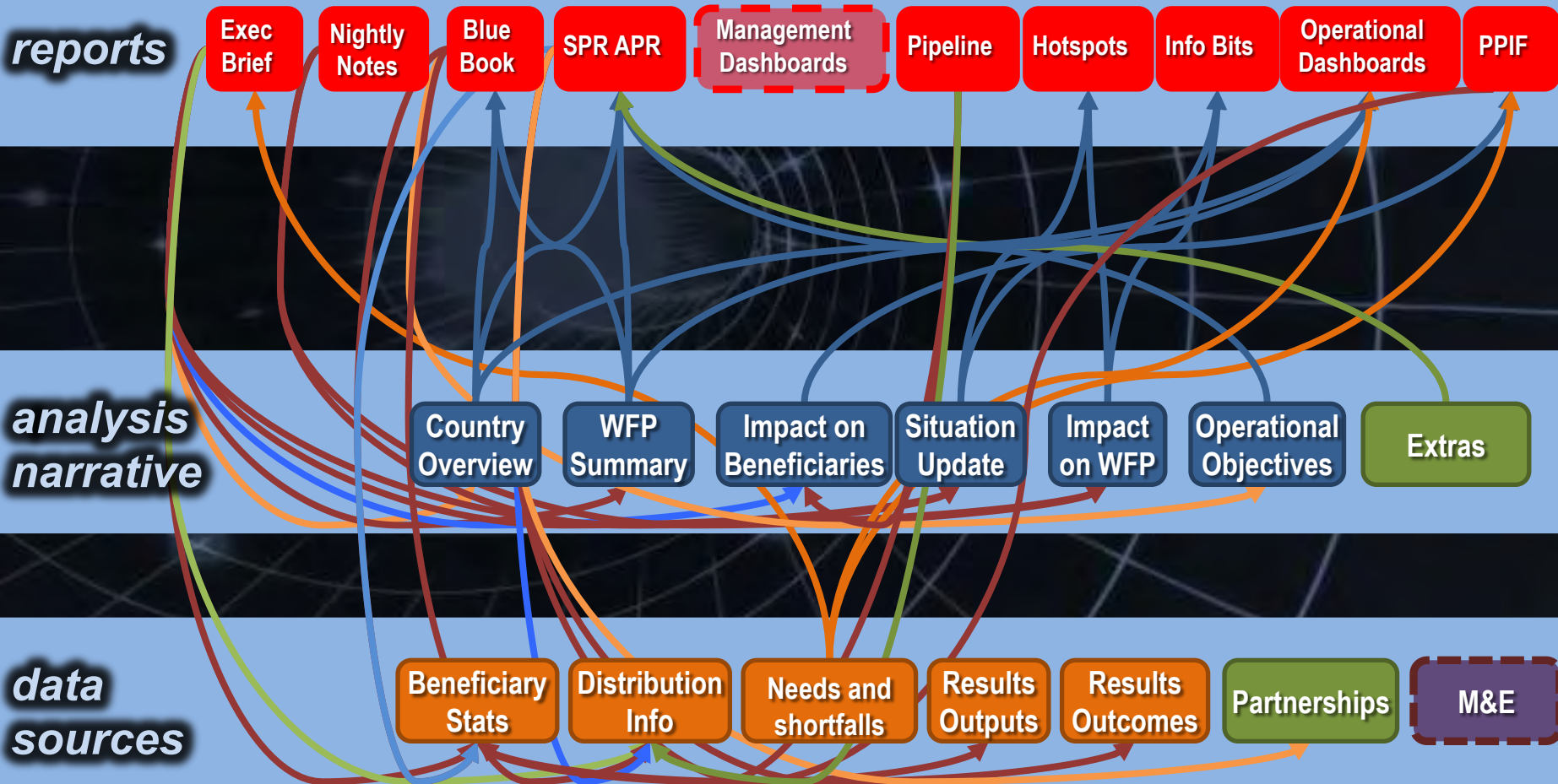
WINGS 2012

NON WINGS

NO APP

REPORT MISSION

“cut & paste” process, disparate sources



REPORT MISSION

the Global Reporter Platform

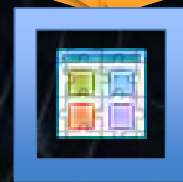
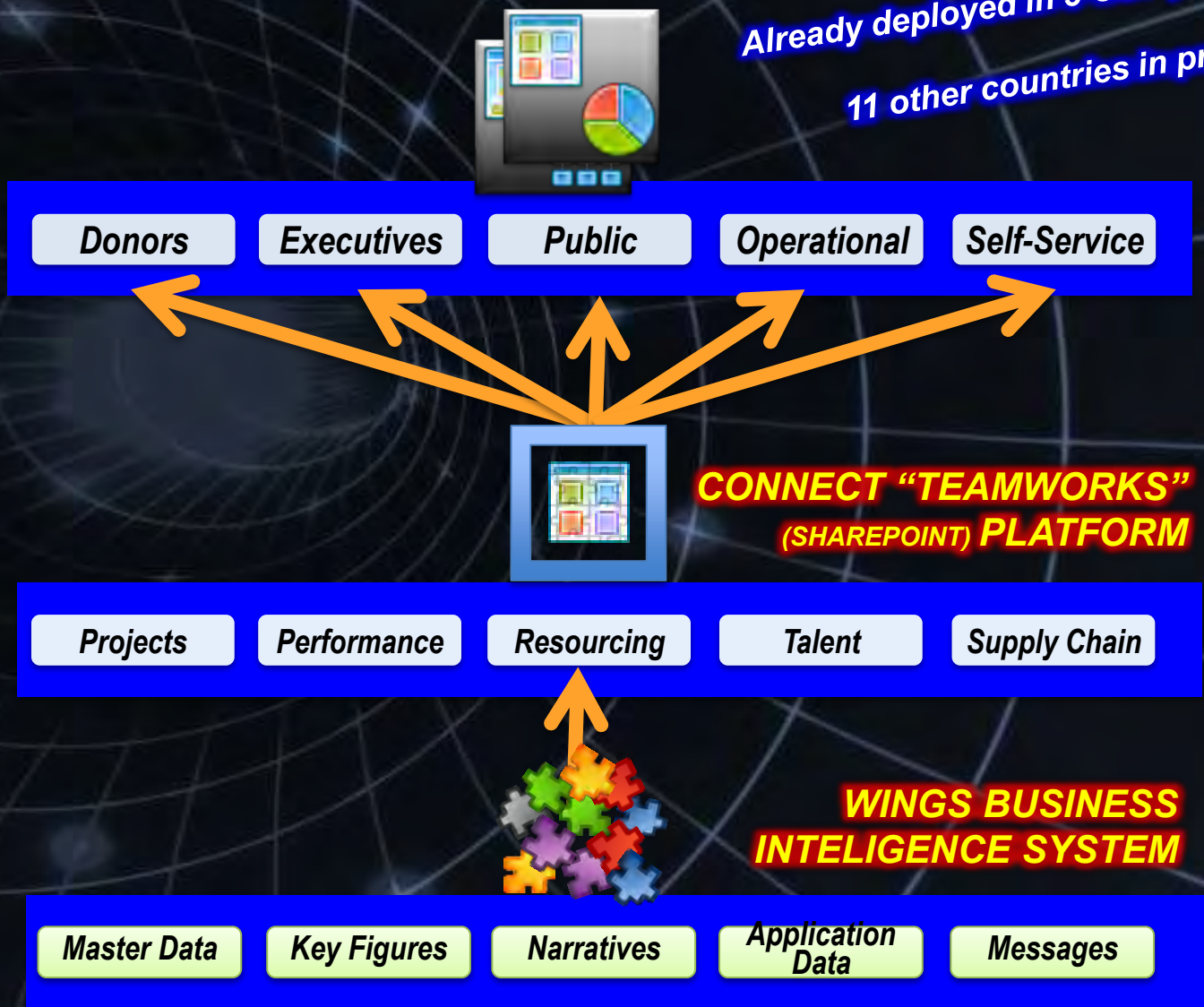


Already deployed in 3 ODP pilot co
11 other countries in progress

Portals,
Dashboards
& tablet apps

Information &
Narrative
enrichment

Data & Content
Building Blocks



ERP support to other UN organizations



- ✓ *Project Management*
- ✓ *Process re-engineering*
- ✓ *Systems Configuration*

- ✓ *UN Secretariat*
- ✓ *UNRWA*
- ✓ *CTBTO*
- ✓ *UNESCO, ...*

**To provide support to WFP and other UN organizations
in implementing improving and supporting
IPSAS-compliant ERP (Enterprise Resource Planning) solutions**

- ✓ *Bringing other UN organizations to WFP level (ERP + IPSAS)*

- ✓ *Harmonizing ways of doing business so we all share costs of operations & improvements*



***CASH for
CHANGE***





Current

- Disparate systems and processes
- Non-integrated
- Set-up time: > 6 months
- IT deployment: Custom development

Interim

- Available Aug 2012
- Reduces duplicative cost and critical risk
- Set-up time: > 2-3 months
- IT deployment: System copy + customization

2013

- Fully integrated, single solution set
- Integrated in corporate processes
- Segregation of duties
- Set-up time: < 1 month
- IT deployment: Configuration

IT is building the logistic pipeline to move and control the “digital food”



2009-2012:

*With RightSourcing, FoodLink, WINGS II, Connect and EPIC
WFP is completing a three years journey
to cloud computing*

WFP before the cloud



- × Fixed Costs
- × Time to Deploy
- × Mismatch with changing needs
- × Local solutions
- × Re-Training
- × Skills
- × Limited mobility



WFP in the cloud



- ✓ *Time to Deploy*
- ✓ *Easy ramp-up*
- ✓ *Quick downsizing*
- ✓ *Same global solution*
- ✓ *No re-training*
- ✓ *Variable Costs ("IT as a Service per U*
- ✓ *Full mobility*
- ✓ *Stronger controls*



1truth strategic contribution



- 1** *Modernize the IT platform to empower our people*
- 2** *Increase the support to the **front line***
- 3** *Improve client **experience and services***
- 4** *Reduce the **running costs***
- 5** *Enable **scalability** and rapid changes in scope of work*
- 6** ***Affordability** of complex solutions for smaller countries*
- 7** *Re-engineer the IT mission to cope with all the above*



User Satisfaction - Overall	75 %
User Satisfaction - Executives	73 %
Total IT Budget	\$ 88.8 m
IT cost per user / month	\$ 617
IT expenditures / Scope of Work	2.5 %
IT Professional Staff : WFP Staff	126 : 14,800
Locations connected & supported	403
Number of Connected Devices	15,000+
Systems Availability	99.82 %

UNHCR: 3.5 %
UNFPA: 2 %
ICAO: 7 %
WMO: 3.4 %

*** Source: JIU**

paperless board meetings & committees in 2013





Q & A's

ernesto.baca@wfp.org
jakob.kern@wfp.org