

FIRST EXECUTIVE BOARD (EB.I/2014)
WFP LATIN AMERICA AND THE CARIBBEAN
Rome, February 2014



World Food Programme

By Miguel Barreto
Regional Director
WFP Latin America and the Caribbean Regional Bureau



wfp.org/es

Resources WFP received from governments for bilateral operations in their own countries (2009-2013)



Amount of resources received of local government

(value in millions of US\$)

1.5

3.0

4.6

5.3

14.5

44.0

91.3

not applicable

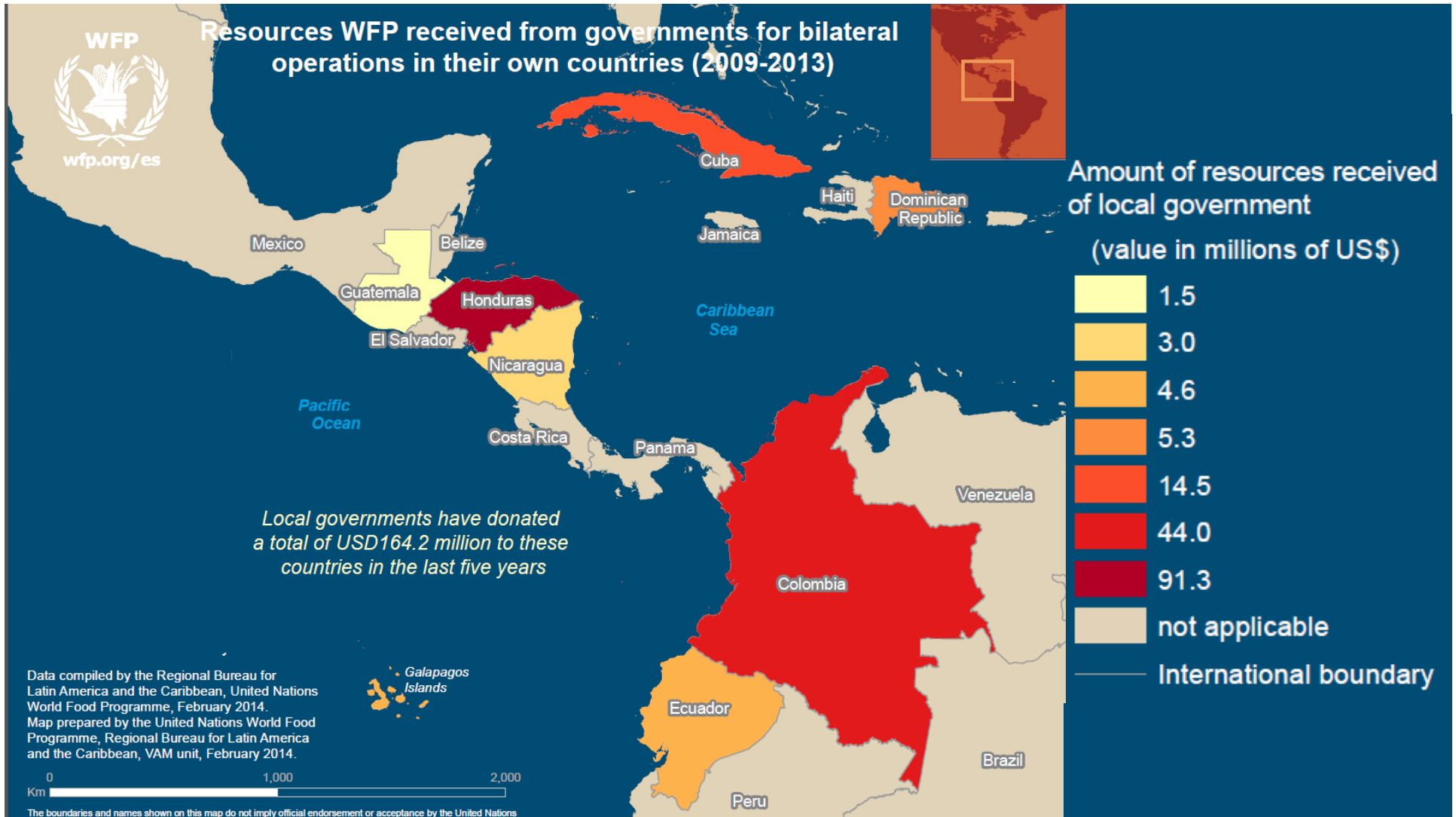
International boundary

Local governments have donated a total of USD164.2 million to these countries in the last five years

Data compiled by the Regional Bureau for Latin America and the Caribbean, United Nations World Food Programme, February 2014. Map prepared by the United Nations World Food Programme, Regional Bureau for Latin America and the Caribbean, VAM unit, February 2014.

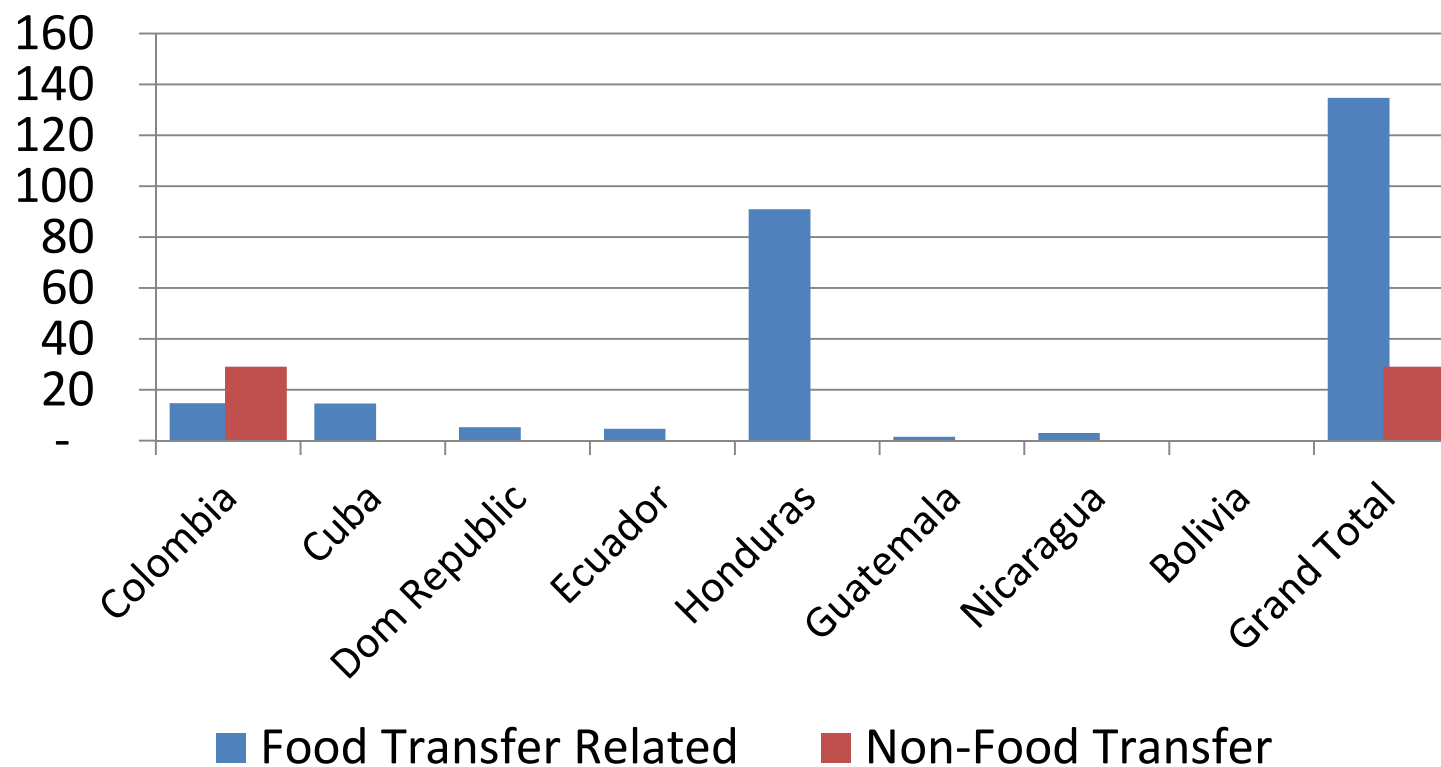
0 1,000 2,000 Km

The boundaries and names shown on this map do not imply official endorsement or acceptance by the United Nations



NATIONAL SUPPORT TO WFP OPERATIONS IN LAC (2009-2014)

(In millions of US\$ /food & non food transfers)





Muchas gracias!



Programa Mundial de Alimentos

Luchando contra el Hambre en el Mundo / Fighting Hunger Worldwide