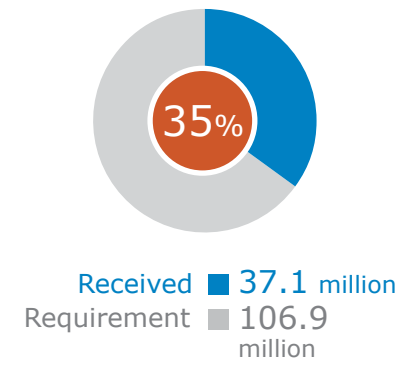
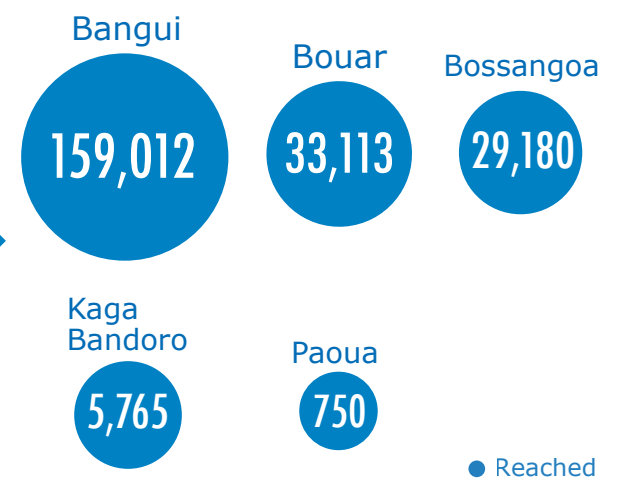


## WFP EMOP 200650 Requirements & Funding

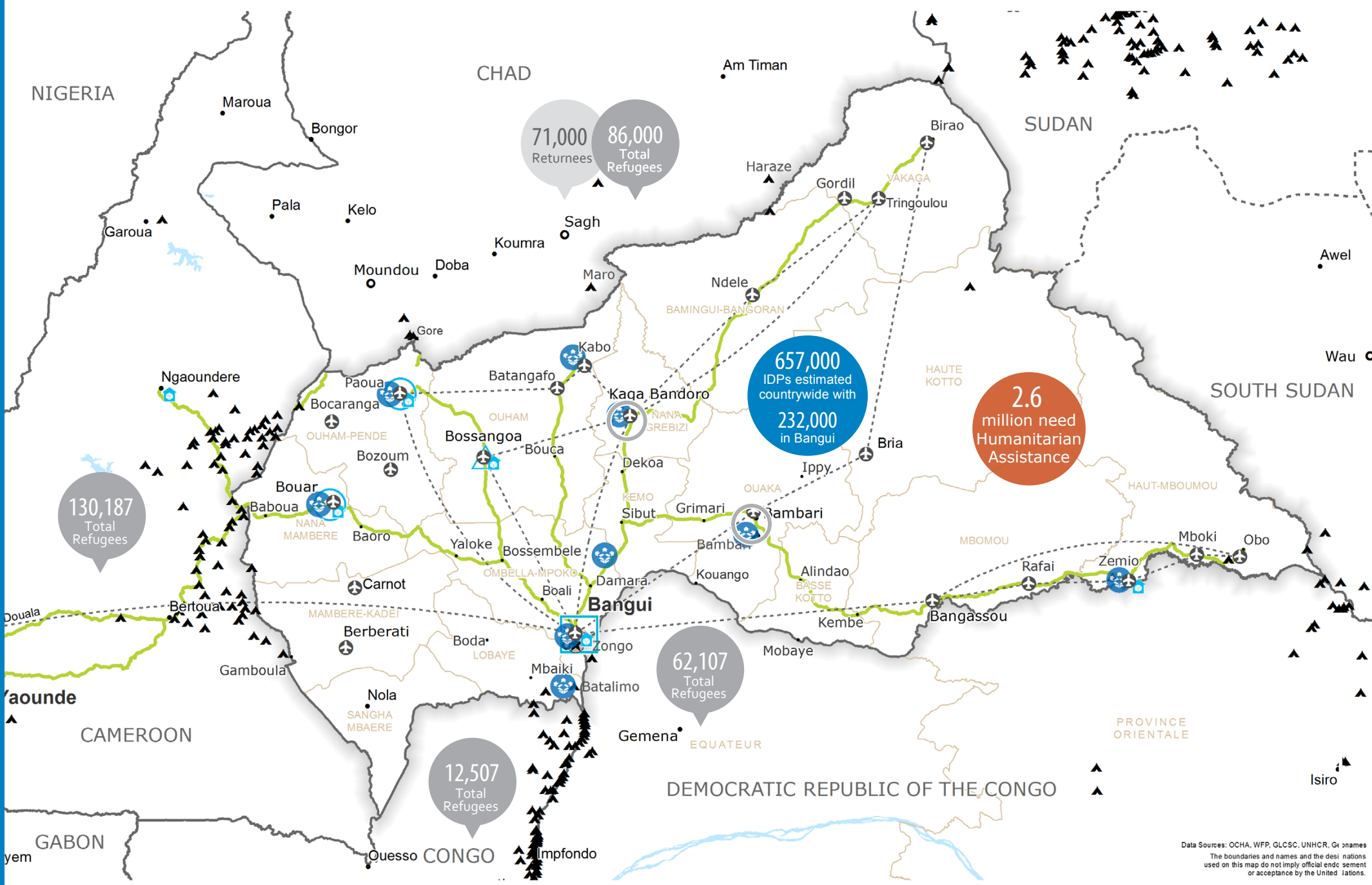
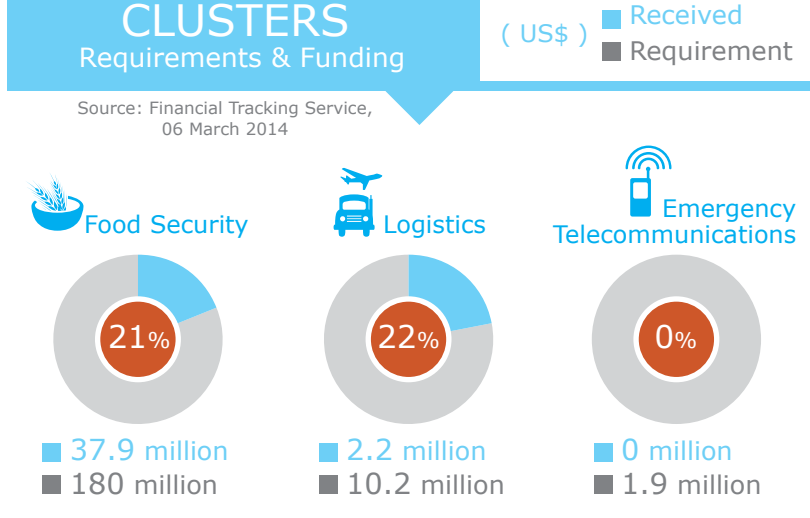
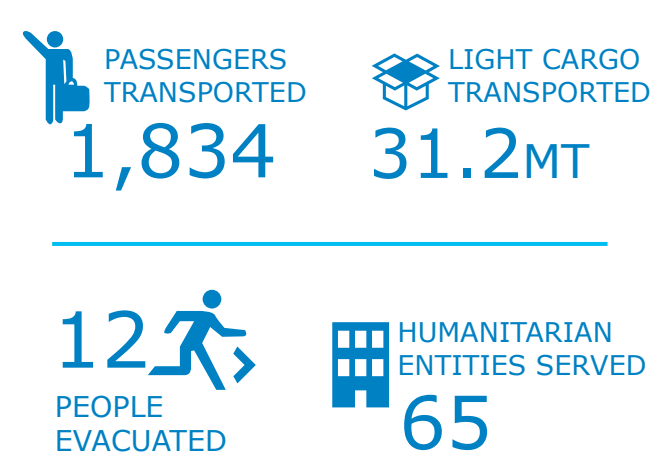
Confirmed Contributions



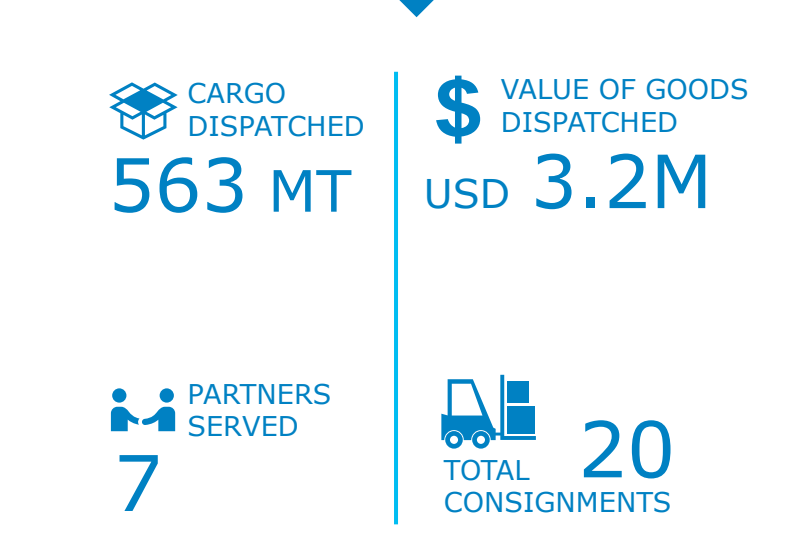
## BENEFICIARIES (Feb. 2014)



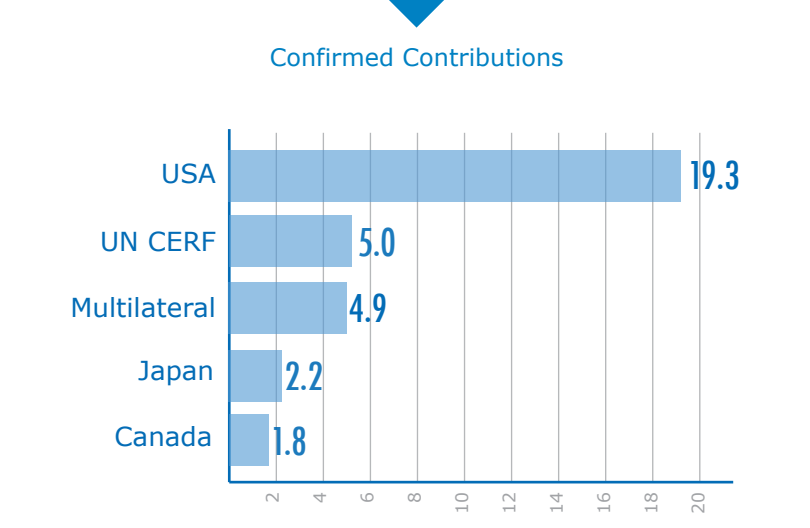
## UNHAS (Feb. 2014)



## UNHRD



## TOP 5 DONORS (EMOP 200650) US\$ million



- Country Office
- Field Office
- Warehouse
- National Capital
- International boundary line
- Sub Office
- Food Distributions Points
- Road Supply Route
- Major Town
- Intermediate Town
- Small Town
- Port
- UNHAS Connection
- UNHAS Route



**WFP LEVEL 3 EMERGENCY**  
SINCE 11 DECEMBER 2013

Contact: [hq.situation.room@wfp.org](mailto:hq.situation.room@wfp.org)  
Website: [www.wfp.org](http://www.wfp.org)