



World Food Programme



West Africa Ebola Outbreak

2015 First Quarterly Operational Briefing

Presentation to the
WFP Executive Board

WFP Auditorium – 27 January 2015

Humanitarian Situation

- Case incidence is progressively slowing down in all the three countries. As of 22 January 2015, WHO reported a total of 21,759 cases and 8,668 deaths in Guinea, Liberia and Sierra Leone.
- Notwithstanding, transmission continues in all three countries. Epidemiological analyses suggest there are several micro-outbreaks, each at different stages and with potential to flare. New hotspots are declared, as geographic pattern of transmission shifts.
- The virus has exacerbated existing vulnerabilities the three countries. Formal and informal economic activities have severely contracted. Real-time monitoring underscores that affected communities continue face low wages, reduced demand for labor, and market disruptions.
- Meanwhile, basic services have been completely disrupted. Five million children are estimated to be out of school, and could miss up to a full academic year; today, most schools remain closed, and fear and stigma will present a further challenge to timely return of children to schools. Nutrition treatment and services feeding services in the three countries have drastically declined.

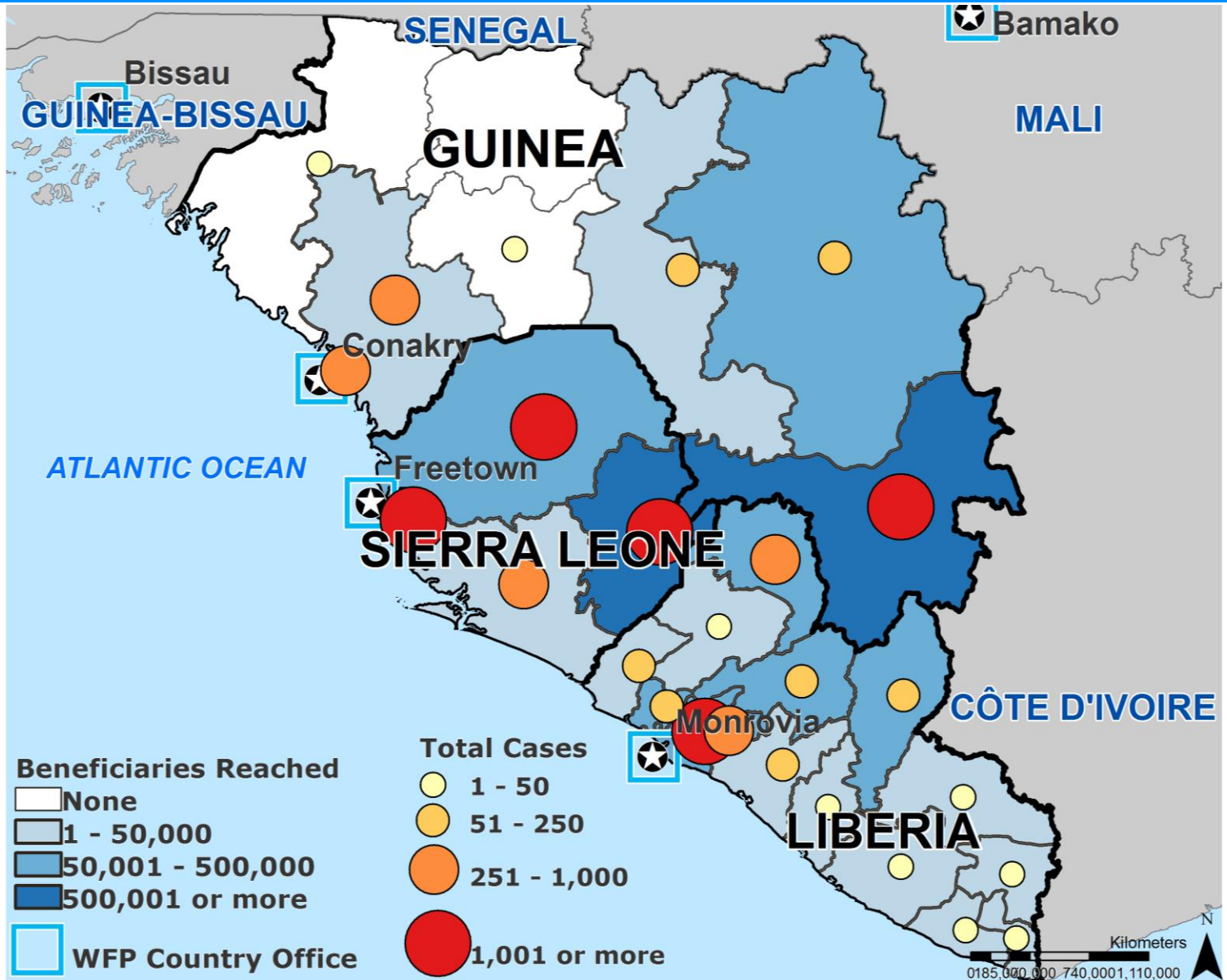
Security Situation

- Tensions are high among the local population in areas of Guinea, resulting in security incidents against health personnel and infrastructure.
- Qualitative reports suggest continued skepticism among communities regarding ebola. Traditional burials continue in secret.

Measures to ensure staff safety and well-being:

- WFP now has two health advisors per country and field security officers; at the regional level, the structure is overseen by a regional health advisor and senior field security officer, complemented by a public health specialist and staff counselor. To ensure a locally sensitive and durable structure, in-country advisors recruit and mentor national advisors (already 4 recruited).
- Helicopters equipped for medical evacuation are now in place for in-country transport of ebola-symptomatic personnel.

MAP: Food Follows the Virus



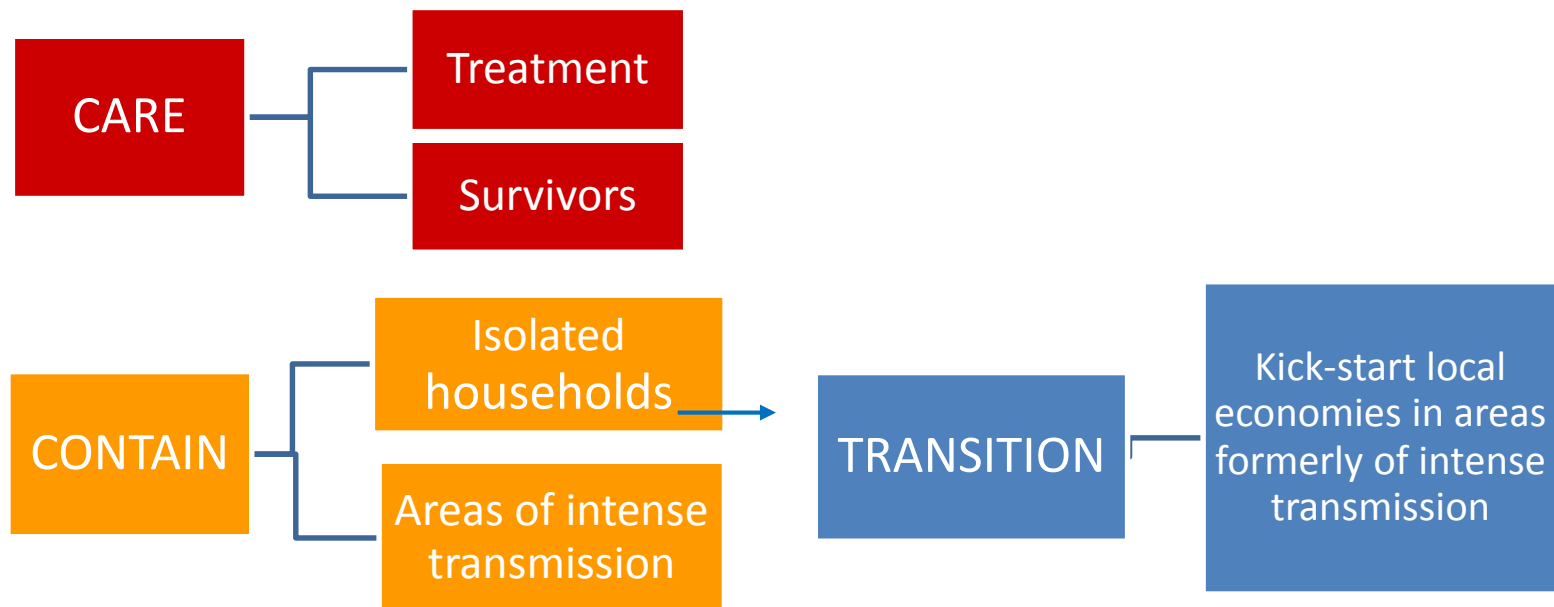
Framework of Interventions

Regional EMOP 200761

Support to populations in areas affected by the Ebola outbreak in Guinea, Liberia and Sierra Leone

Target: 3 million beneficiaries

Timeline: (25 August 2014 – 31 May 2015)



Framework of Interventions

SO (Regional) 200773

Logistics Common Services for the Humanitarian Community's Response to the Ebola Virus Disease Outbreak in West Africa

Timeline: (15 October 2014 – 31 May 2015)

- Aviation support (strategic airlifts of equipment and passenger transport via UNHAS)
- Provision of Inter-agency Coordination through the Logistics Cluster
- Provision of Telecoms infrastructure through the ET Cluster
- Provision of engineering support to health facilities
- Emergency preparedness and response measures



Operational Priorities

1. Operationalization of latest EMOP and SO budget revisions

Refining support to survivors, rolling out cash and vouchers in the three countries, reinforcing nutrition support, and particular attention to introducing the transition pillar.

Increasing up-country warehouse, transport and communications capacity where requested, and ensuring reliable and safe transport of staff, equipment, and goods as health response focuses at district-level.

2. Preparing for early recovery

Early recovery assessments underway. Working with governments and partners to support safe and gradual rehabilitation and resumption of basic services.

3. Looking beyond

Re-conceptualizing livelihood, nutrition and education programmes – integrating short-term priorities into longer-term programmes and leveraging new opportunities.

mVAM

- In Liberia and Sierra Leone the fourth monthly round of data collection on food security is completed, data analysis is ongoing. In Guinea, the fourth round of data collection is ongoing. Sample size has been increased by an average 250 households in each country.
- All bulletins and data issued since October are available on the VAM page of WFP website: http://vam.wfp.org/sites/mvam_monitoring/

Monitoring

- Priority: strengthening output and outcome monitoring.
- In Guinea, first round of post-distribution monitoring took place using on the ground questionnaires and focus group discussions; exercise was coordinated with health advisors to mitigate risk. In Liberia and Sierra Leone WFP is testing mobile PDM (mPDM) through mobile phones.
- The logical framework of EMOP was adapted in January to capture project specific outcome indicators, specifically: how food has supported households to reduce unnecessary movements during containment.

Next step: define and incorporate questions on socio-anthropological impact of ebola in assessment and monitoring tools.

Inter-Agency Coordination

UNMEER

- Stronger presence on the ground. Liaison officer now based in Dakar. And UNMEER staff seconded to WFP UNHAS regional team to collaborate on management of UNMEER assets.

Sector coordination

- Cluster system active in Liberia. In Guinea and Sierra Leone benefit from pre-existing working group structures.

Early Recovery Assessments (ERAs)

- Lead by UNDP. Missions conducted in Guinea, Liberia and Sierra Leone to address the impacts of the ebola crisis on four thematic pillars: Health, Water and Sanitation; Infrastructure and Basic Services; Socio-economic Recovery; Peacebuilding.

Implementing Capacity

Staff:

- 1,053 staff (813 national and 240 international) in the 3 countries

WFP Offices:

- 1 Regional Bureau + liaison office in Accra
- 3 Country Offices
- 7 Sub-offices in Guinea
- 6 Sub-offices in Liberia
- 5 Sub-offices in Sierra Leone

Warehouse network reinforced under SO:

- 4 regional Staging areas (Accra, Dakar, Las Palmas, Cologne-Bonn airport)
- 3 national staging areas (Conakry, Monrovia, Freetown)
- 3 main logistics hubs (Conakry, Monrovia, Port Loko)
- 11 Forward Logistics Bases (2 in Guinea, 6 in Liberia, 4 in Sierra Leone)
- In addition to set-up of Mobile Storage Units where required by WFP and partners – at “last mile.”

Challenges

- Moving to « transition » phase alongside continued support to the health response.
- High reliance on short-term TDYers. As begin to plan for recovery and longer-term, putting in place a more sustained staffing structure will be critical to prepare the foundations for new programmes. A challenge in context of multiple L3s.
- Defining vulnerability criteria that is ebola sensitive as prepare for recovery.
- Countries will require important investment in recovery, and maintain attention in « post-ebola » headlines and sufficient resourcing will be critical.

Requirements and Resourcing

Financial overview of WFP Ebola Response as of 26 January 2015

	Needs	Confirmed Contributions	Shortfall
Regional EMOP200761	\$189,133,000	\$ 132,600,212	30 %
Regional SO200773	\$178,533,000	\$ 130,796,720	27 %

Management review: summary findings

- Ebola crisis is atypical and conditioned by high rate of uncertainty. Supporting a health emergency means that the entry point for WFP assistance is not the traditional food security criteria. In this context, WFP is not the driver defining the *where/who/why*.
- Unanticipated scale, type and number of requests to WFP common services platform – high expectations and demand on WFP.
- The unique and rapidly evolving crisis required that WFP learn and adjust along the way. By maintaining flexibility and adaptability, WFP was able to successfully adapt its traditional tools to support the health response.

Real-time review of risks, opportunities



NOVEMBER - DECEMBER

DECEMBER - JANUARY

FEBRUARY

Compliance team based in Dakar, travelling to Accra and 3 COs

WFP and WHO: the new partnership

WHY:

Two primary objectives:

- Ensure the financial, administrative, communications, procurement, and security support required to enable WHO technical teams to be present and operational at the district and county level;
- Learning opportunity to reinforce operational capacities of the agencies to respond to complex health crises in the future.

WHAT:

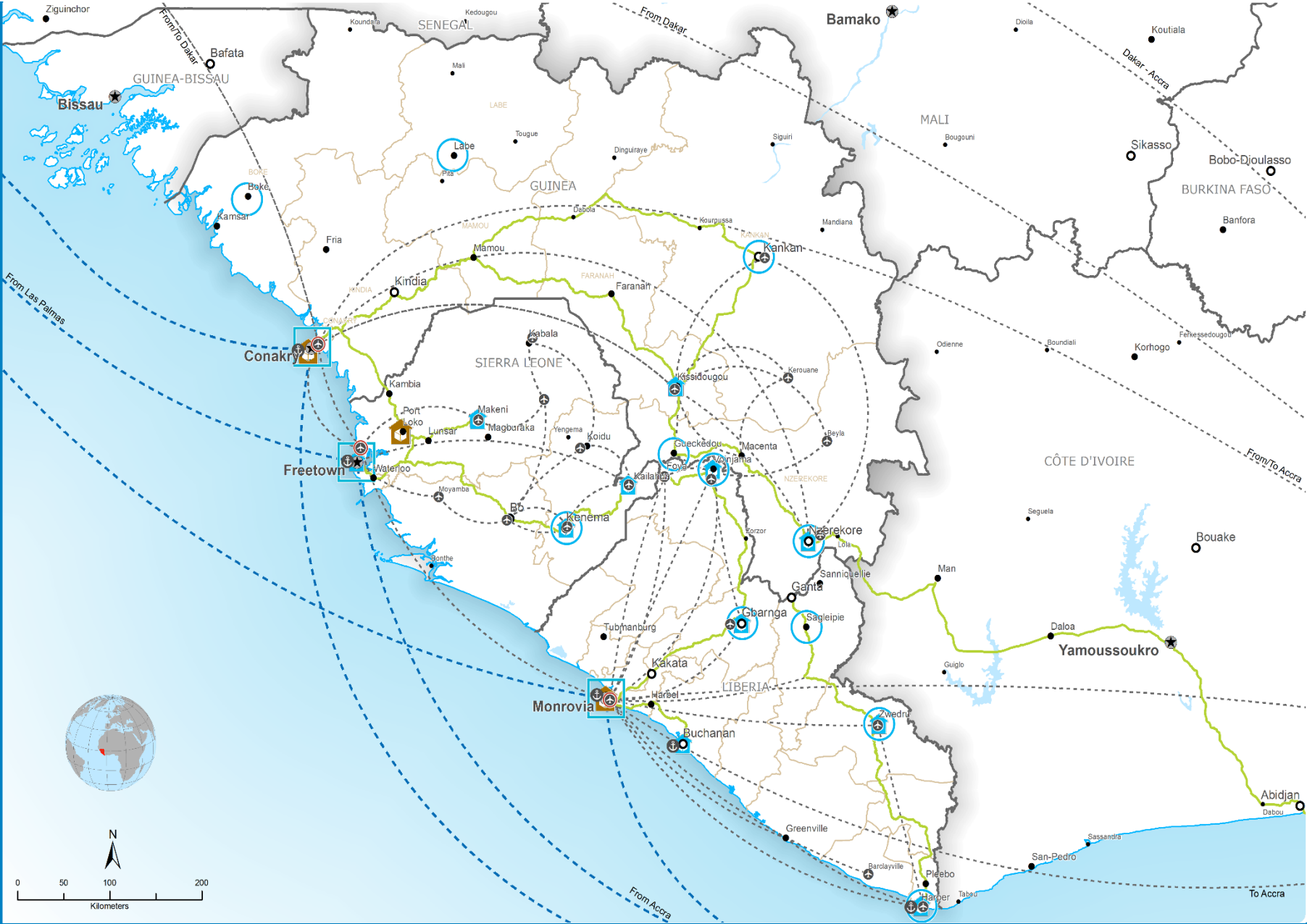
Provision of operational support to WHO technical field teams at the national, sub-national and field level in the three countries through a scaled-approach in priority areas determined by WHO and governments.

HOW:

Building teams together with WHO at the national and district level.

GUINEA, LIBERIA AND SIERRA LEONE

Operational Overview - 05 January 2015



0 50 100 200
Kilometers

Date Created: 05 January 2015

Contact: omep.gis@wfp.org
Website: www.wfp.org

Prepared by: OMEP GIS
Map Reference:
GIN_LBR_SLE_OperationOverview_A3L

- | | | | | |
|---|---|---|---|--|
| <ul style="list-style-type: none"> National Capital Major Town Intermediate Town Small Town | <ul style="list-style-type: none"> Country Office Sub Office FLB Main Hub | <ul style="list-style-type: none"> Port Staging Area UNHAS Connection UNHAS Route | <ul style="list-style-type: none"> Road Supply Route Sea Supply Route | <ul style="list-style-type: none"> International boundary First level admin boundary River Surface Waterbody |
|---|---|---|---|--|

Data Sources: WFP, UNGIWI, GAUL, OCHA, WHO, GLCSC, GeoNames,

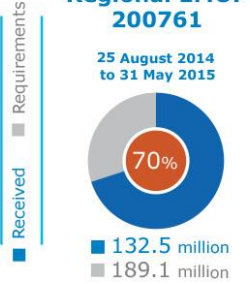
The boundaries and names and the designations used on this map do not imply official endorsement or acceptance by the United Nations.





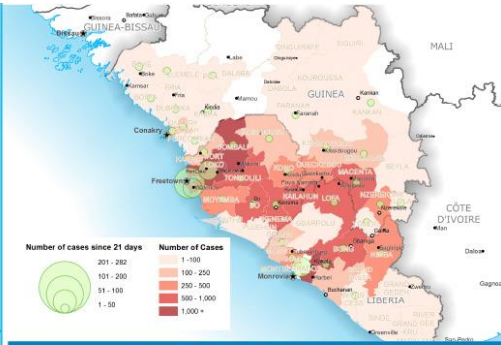
FUNDING

Source: PFG, 23 January 2015



REACHED BENEFICIARIES

(since April 2014 until 11 Jan 2015)
Under Regional EMOP



EBOLA OUTBREAK (since March 2014)

WHO (21 Jan 2015)

21,724 CASES | **8,641** DEATHS

UNHAS (since August 2014)

as of 22 Jan 2015

5,990 PASSENGERS TRANSPORTED | **51.4MT** LIGHT CARGO TRANSPORTED

UNHRD (since March 2014)

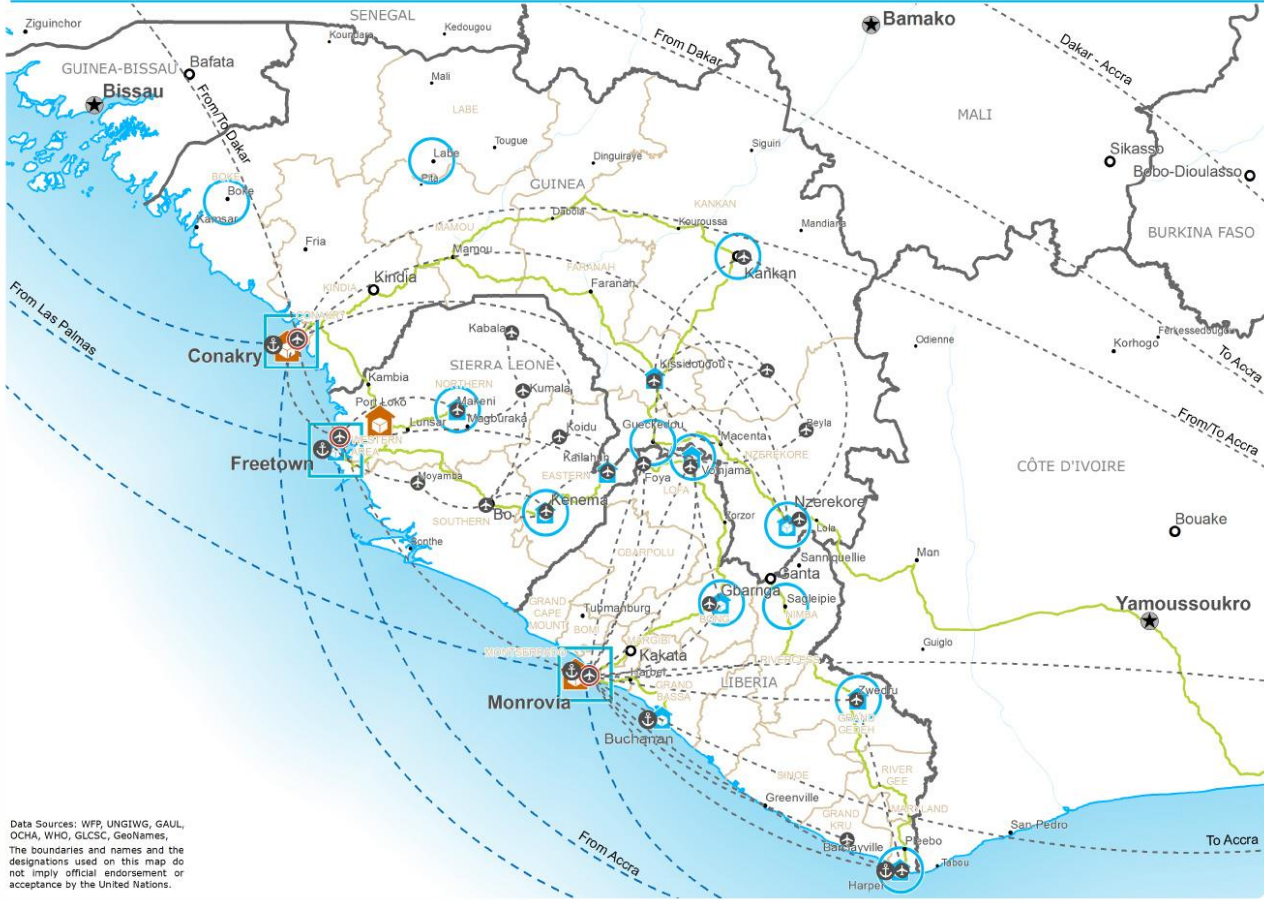
as of 09 Jan 2015

1,630 MT CARGO DISPATCHED | **USD 14.4 million** VALUE OF GOODS DISPATCHED

LOGISTICS CLUSTER (since September 2014)

as of 04 Jan 2015

38,900m³ STORED ON BEHALF OF PARTNERS | **28,910m³** CARGO TRANSPORTED



Data Sources: WFP, UNGIWG, GAUL, OCHA, WHO, GLCSC, GeoNames. The boundaries and names and the designations used on this map do not imply official endorsement or acceptance by the United Nations.

- Country Office
- Sub Office
- Port
- UNHAS Connection
- Staging Area
- UNHAS Route
- National Capital
- Major Town
- Intermediate Town
- Small Town
- Road Supply Route
- Sea Supply Route
- Main Logistics Hub
- Forward Logistics Base
- International boundary
- Region boundary
- River
- Surface Waterbody

WFP
Clusters

WFP LEVEL 3 EMERGENCY
SINCE 13 AUGUST 2014
Contact: WFP.OPSCEN@wfp.org
Website: www.wfp.org