

# Evaluation Policy 2016-2021

## *Second Informal Consultation*

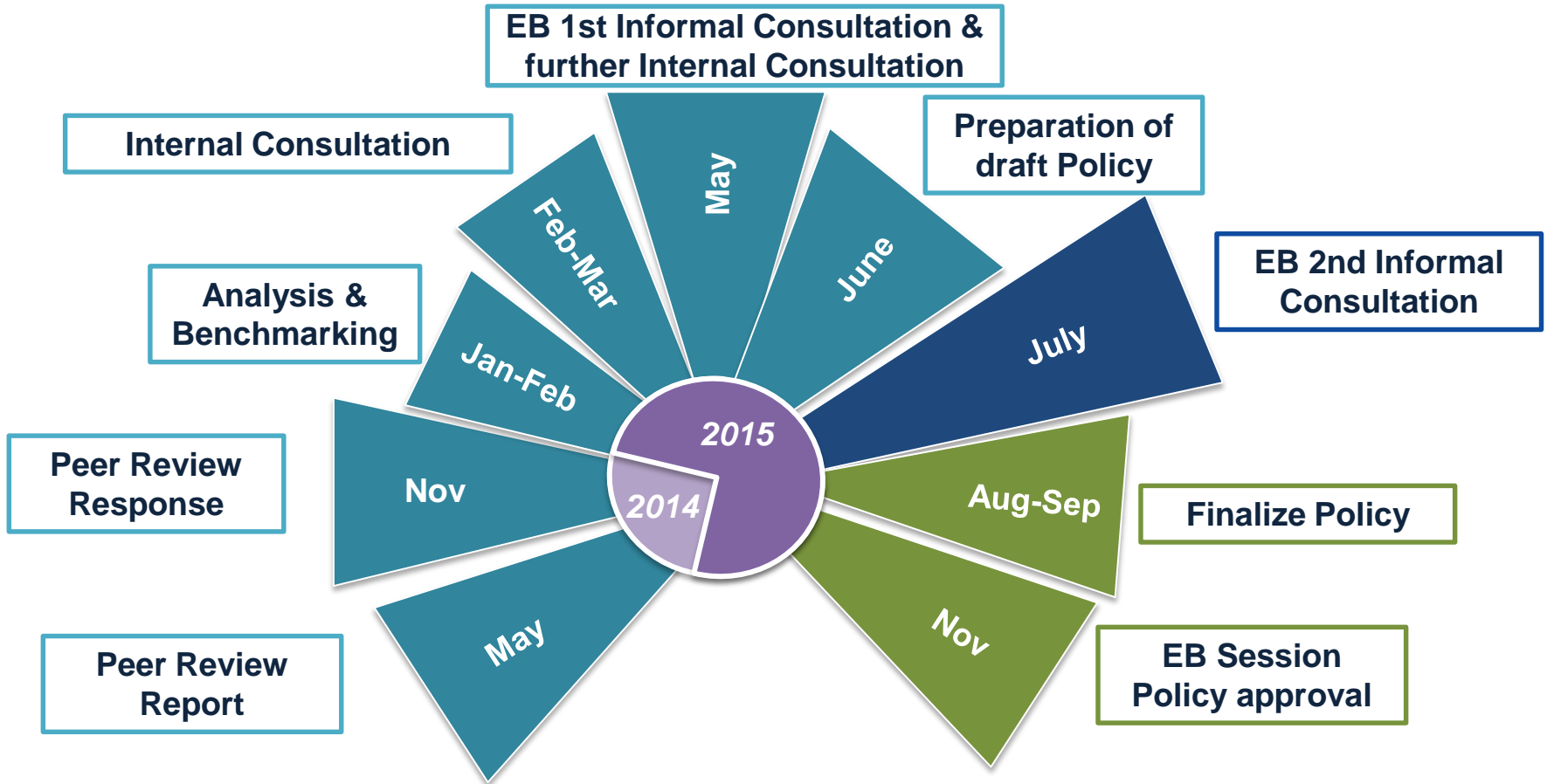
Office of Evaluation

20<sup>th</sup> July 2015



**World Food Programme**

# Evaluation Policy Preparation



# STAKEHOLDER CONSULTATION

EXECUTIVE BOARD

## EXECUTIVE MANAGEMENT GROUP

- Executive Director
- Deputy Executive Director
- Assistant Executive Directors
- Chief of Staff
- Regional Directors
- Human Resources
- Innovation and Change Management
- Legal Office
- Inspector General & Oversight Office
- Ethics Office

## LEADERSHIP GROUP

- Executive Director
- Deputy Executive Director
- Assistant Executive Directors
- Chief of Staff

## External UN Peers

- UNDP
- UNICEF
- UNESCO
- IFAD
- FAO

## INTERNAL REFERENCE GROUP

Government Partnerships

Office of Internal Audit

Gender Office

Resource Management Integration & Support Office

Performance Management & Monitoring

Communication

EB Secretariat

Finance and Treasury

Policy & Programme

Regional and Country Office colleagues

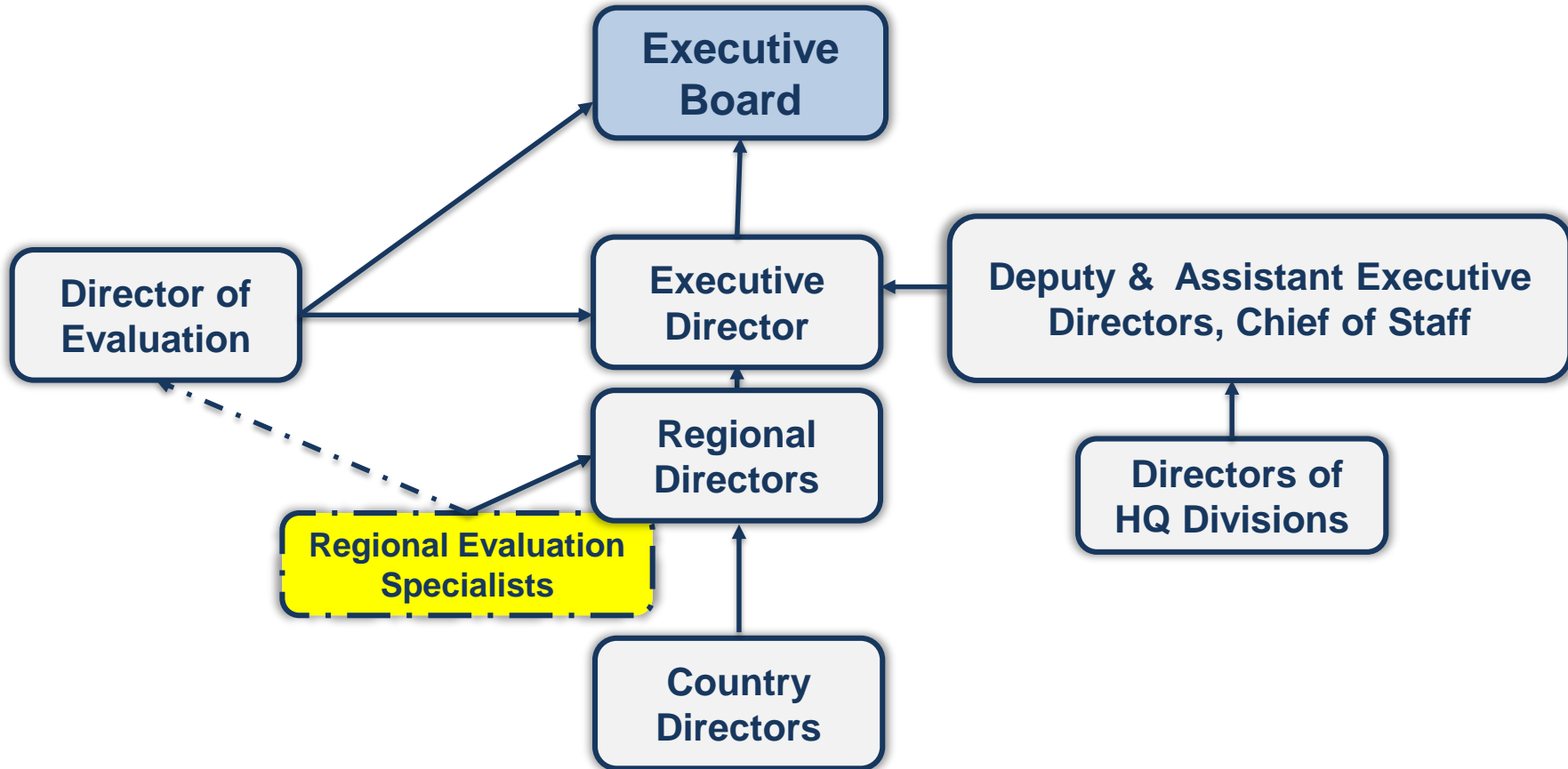
# Issues raised at 1<sup>ST</sup> EB IC

- **GUIDING PRINCIPLES**
- **INDEPENDENCE OF EVALUATION FUNCTION**
- **DECENTRALISED EVALUATION (DE) OVERSIGHT AND ACCOUNTABILITIES**
- **COVERAGE NORMS**
- **RESOURCING**
- **RISKS**
- **MANAGEMENT RESPONSE**
- **PARTNERSHIPS**

# Evaluation Principles



# EVALUATION FUNCTION IN WFP



## Director of Evaluation

### Standards setting:

- Impartiality
- Coverage norms
- REAs reporting line
- Quality Assessment
- Function reporting

## Regional Directors

### Application of:

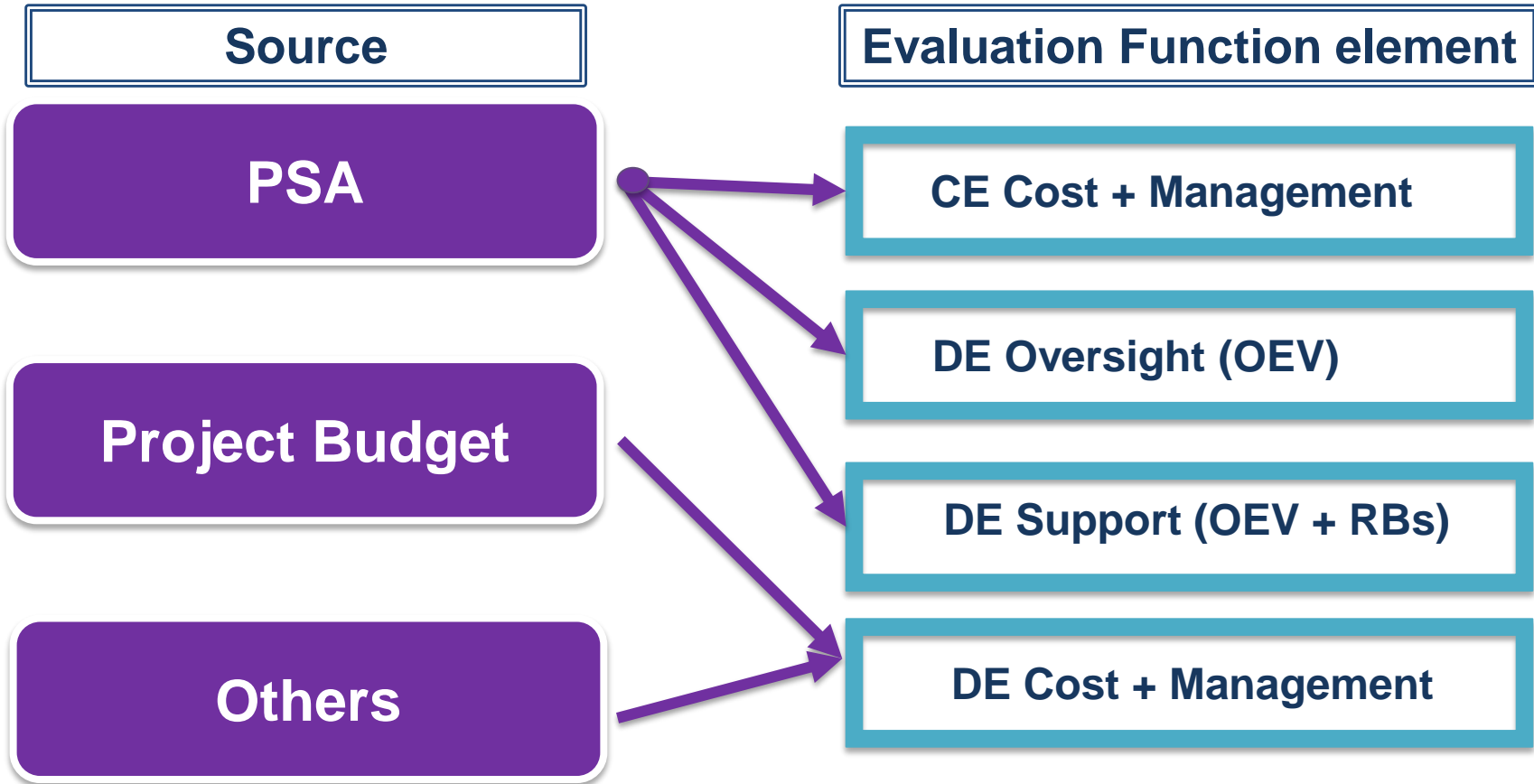
- Impartiality provisions
- Coverage norms
- Planning
- Resourcing
- Follow up
- Use

# COVERAGE NORMS

Centralized evaluation	Decentralized evaluation
Strategic evaluations	Of at least 50% of activity portfolio 3-year period
Policy evaluations (4–6 years after implementation starts)	<ul style="list-style-type: none"><li>• Pilots, innovations, prototypes</li><li>• High-risk interventions</li><li>• Repeat intervention</li></ul>
Country portfolio evaluations	
Corporate emergency responses	
Centrally managed operation evaluations	
All country programmes	



# RESOURCING



# POLICY ROADMAP

New evaluation policy approved

6 Regional evaluation specialists

Next evaluation policy

Developing & testing DE framework

Next Peer Review

Dissemination, Strategy and Capacity Building

Progressive application of coverage norms

Progressive application of Key Performance Indicators

2015

2016

2017

2018

2019

2020

2021

