

# Ethiopia

## 2016 Second Quarterly Operational Briefing

---

Presentation to the  
**WFP Executive Board**

WFP Rome Auditorium | 26 April 2016

**18 MILLION**  
**IN NEED OF FOOD ASSISTANCE**  
 (out of a total population of 97 million)

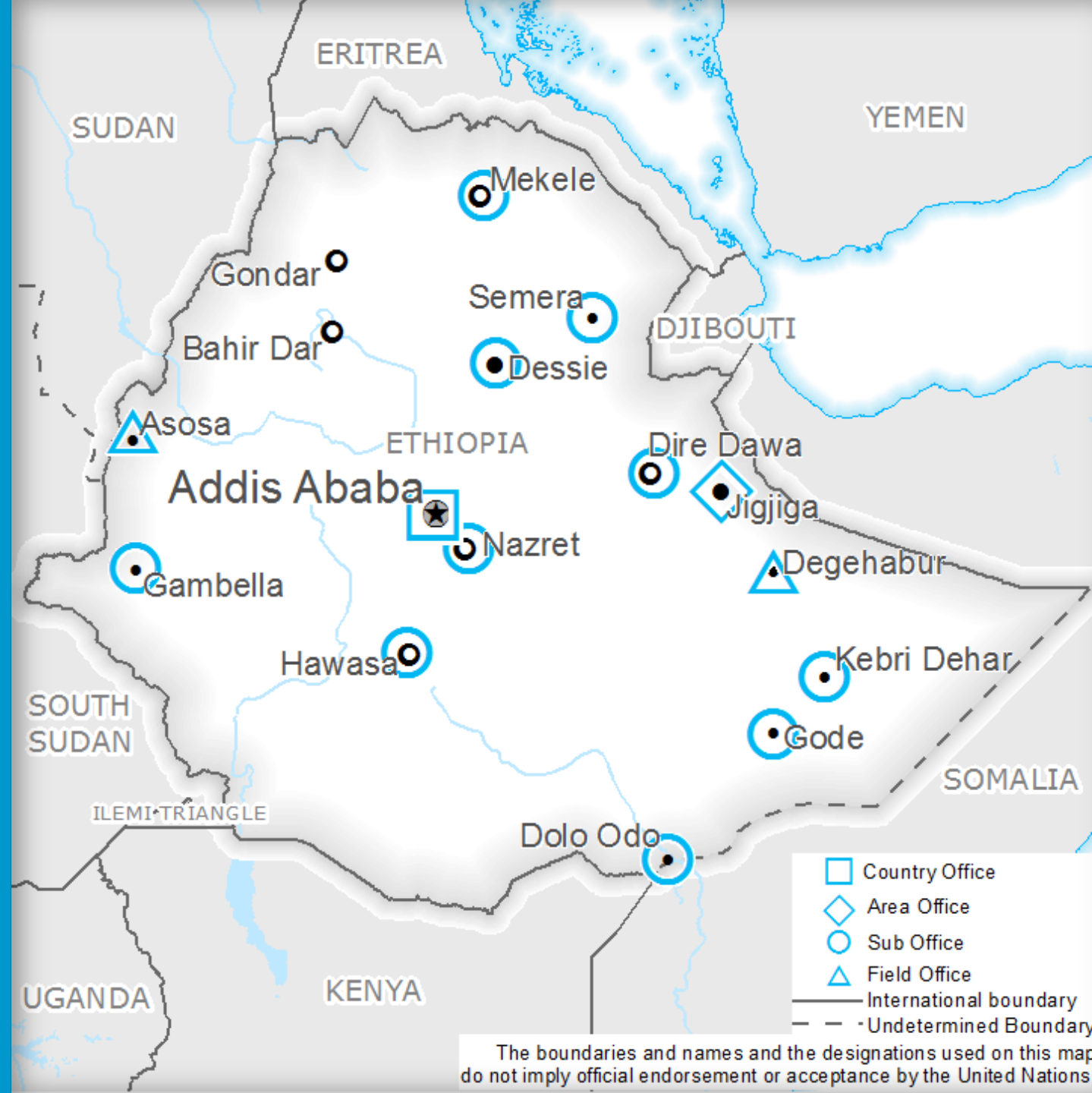
**10.2 MILLION** targeted through the emergency relief programme based on the 2016 Humanitarian Requirements Document (HRD)

**7.9 million** targeted under the Productive Safety Net Programme (PSNP)



**7.6 MILLION** targeted in the joint Government-WFP response, the remaining caseload covered by the Joint Emergency Operation Program (JEOP) NGO consortium

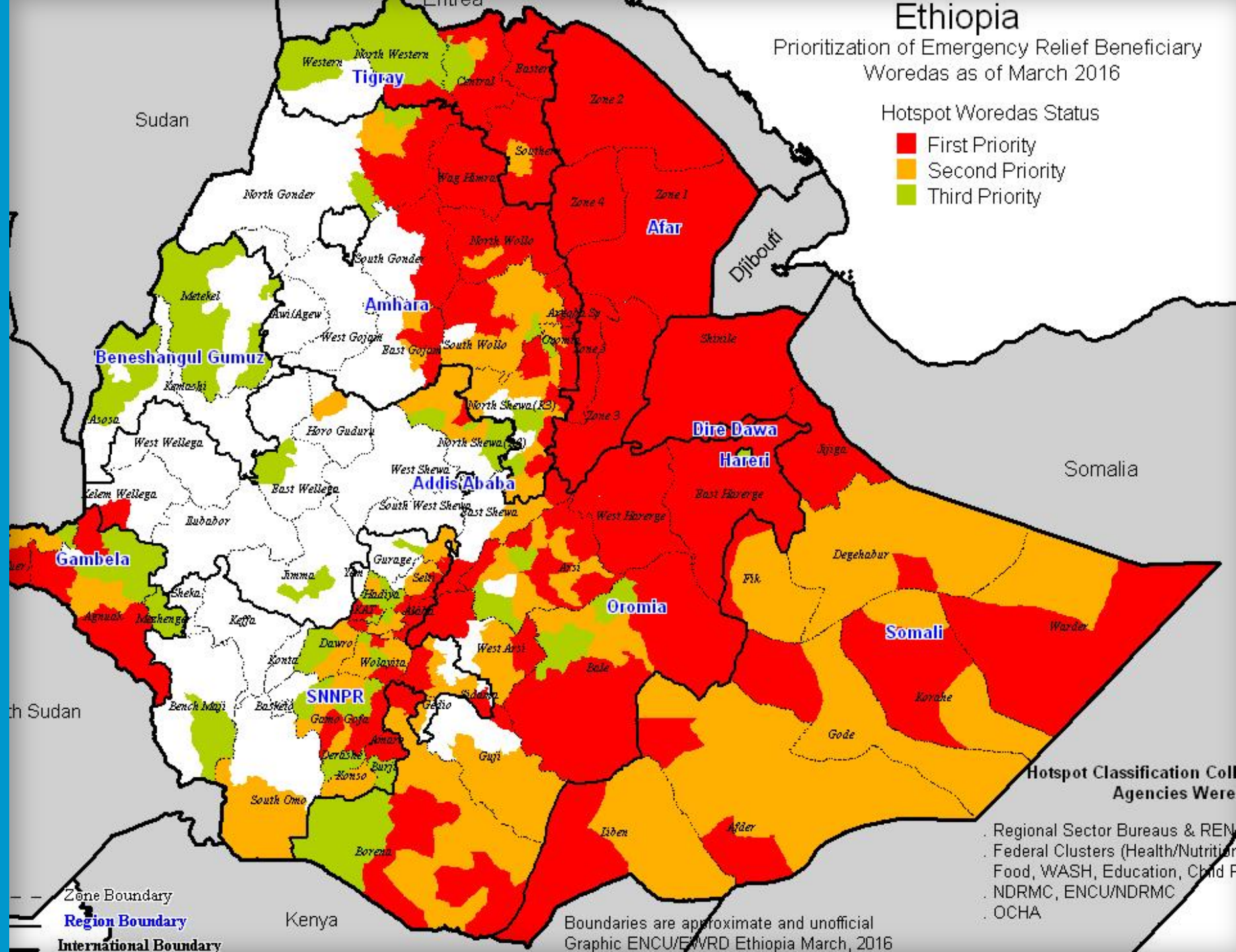
**2.5 MILLION** in need of treatment for moderate acute malnutrition (MAM), more than double the 2015 figure.





# NEEDS CONTINUE TO GROW

Recent *woreda* (district) Hotspot Priority classification revision increased the number of Priority 1 districts from **186** to **219**





# The bottom quintile of the affected population can meet only 15% of food needs from their own means

- **Limiting meal size and reducing consumption** is the most common coping mechanisms.
  - The relief ration is therefore critical for the affected population
- 
- The *Belg* season performance is very mixed and likely to fall below expectations.
  - *Belg* assessment planned for May/June.







## Protracted Relief and Recovery Operation (PRRO) 200712

Responding to Humanitarian Crises and Transitioning Food-Insecure Groups to More Resilient Strategies

July 2015 – June 2018



**USD 276 MILLION**  
received



**USD 570 MILLION**  
funding requirement  
(April 2016 – December 2016)



### RELIEF FOOD ASSISTANCE (10.2 MILLION)

Government-WFP **7.6 million**

JEOP **2.6 million**



### NUTRITION SUPPORT

Targeted Supplementary Feeding **2.5 million**

BSFP Prevention **200,000**



### PRODUCTIVE SAFETY NET PROGRAMME (PSNP)

Public works **1.3 million**

Direct support **300,000**



### CAPACITY BUILDING

Early Warning systems/DRM

Food Management Improvement Programme (FMIP)





# Protracted Relief and Recovery Operation (PRRO) 200712

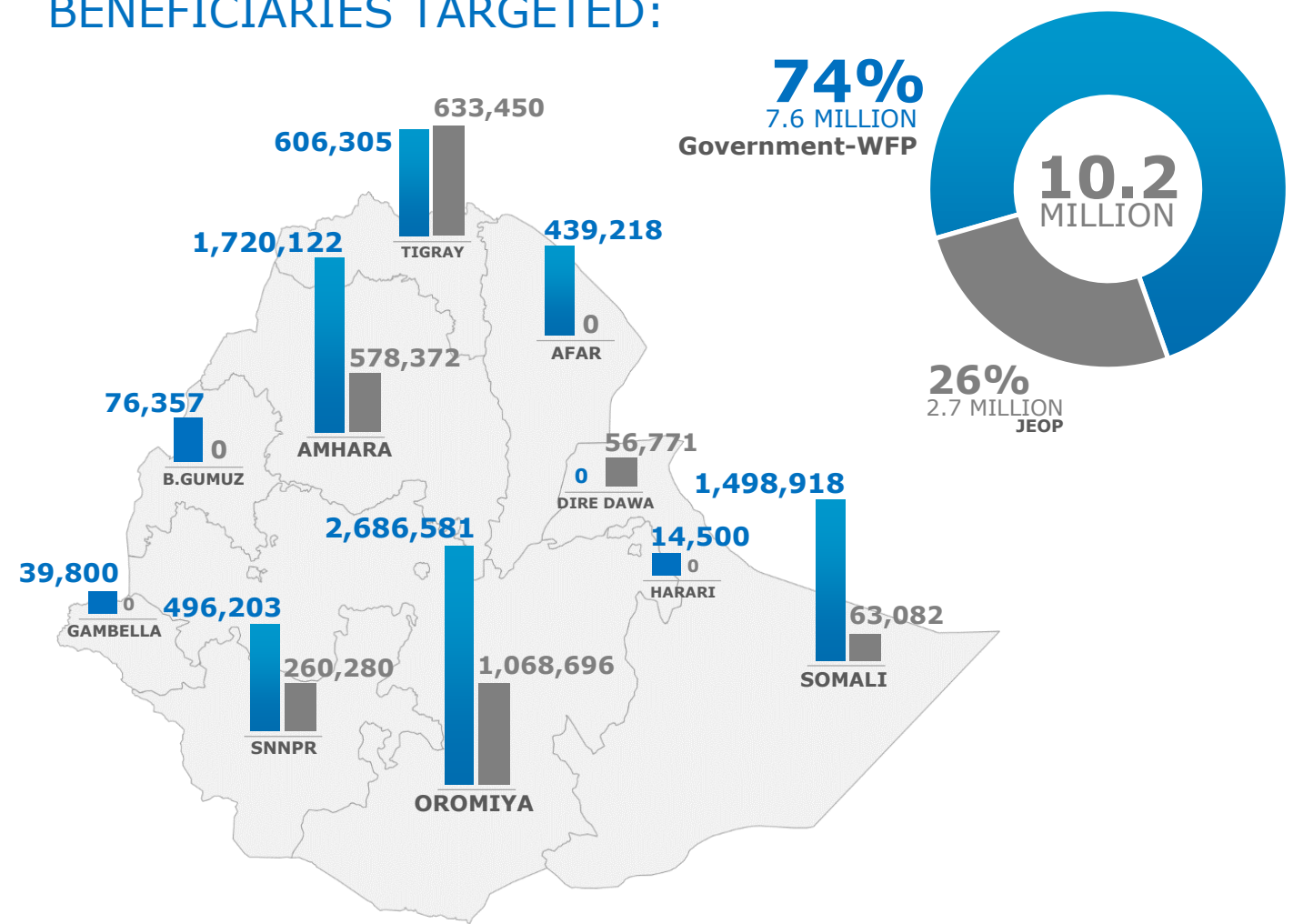
Responding to Humanitarian Crises and Transitioning Food-Insecure Groups to More Resilient Strategies  
July 2015 – June 2018

## 2016 RELIEF PROGRAMME

The scale up from **2.9 million relief beneficiaries in 2015** to **10.2 million in 2016** has been impressive despite many operational challenges, and is underpinned by unprecedented levels of Government resourcing and support.

**However, the current HRD estimate of 10.2 million people underestimates the needs**, as 4.5 million *Meher*-dependent PSNP beneficiaries will likely also need assistance from July onwards.

## BENEFICIARIES TARGETED:





# Protracted Relief and Recovery Operation (PRRO) 200712

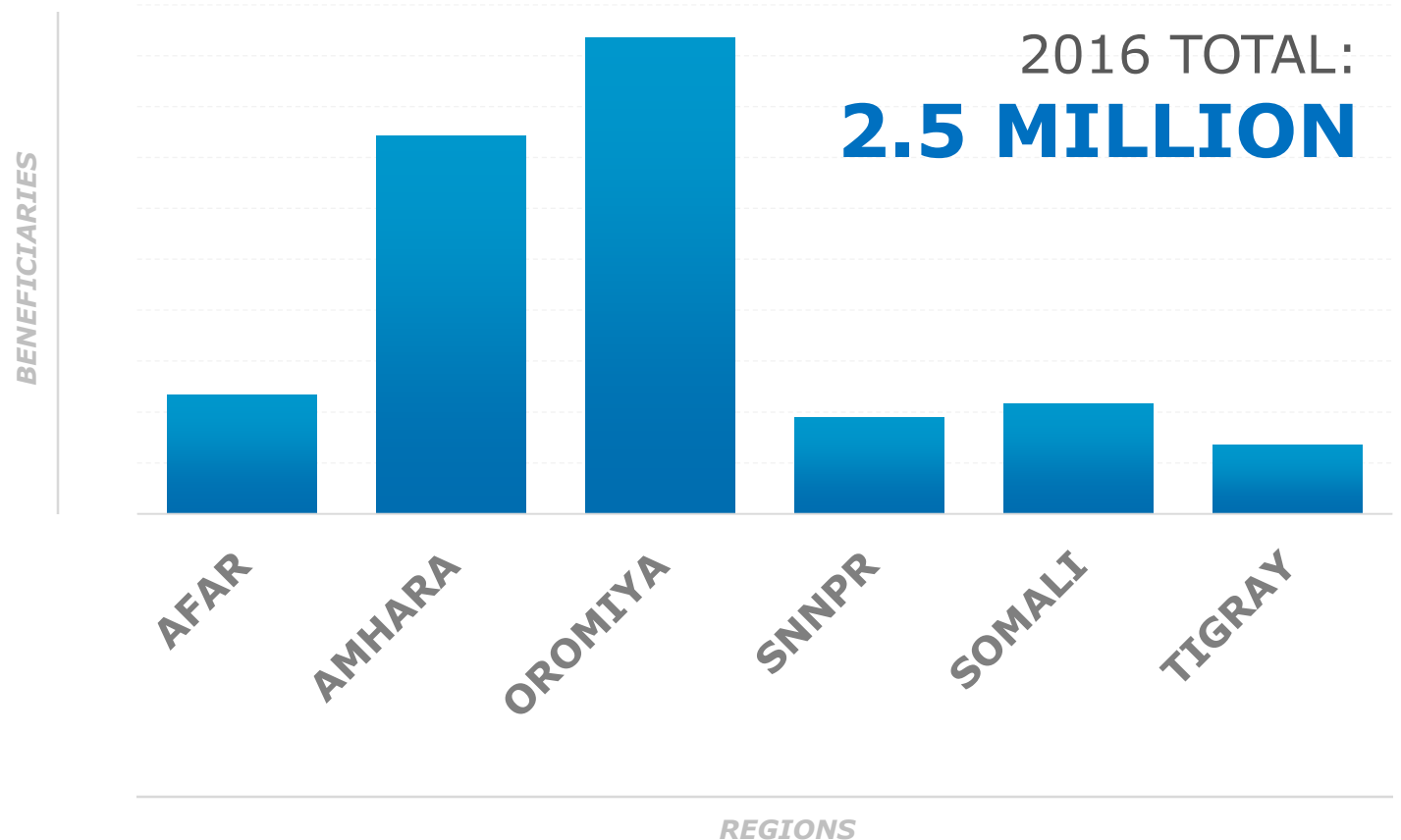
Responding to Humanitarian Crises and Transitioning Food-Insecure Groups to More Resilient Strategies  
July 2015 – June 2018

## NUTRITION

The **Targeted Supplementary Feeding Programme (TSF)** treats children under five years of age, and pregnant and nursing women who are suffering from moderate acute malnutrition (MAM) with Specialized Nutritious Foods.

**An additional 300,000 malnourished people are being targeted following the revision of the Priority Hotspot woreda-classification in March.**

## BENEFICIARIES TARGETED (TSF):









**WFP is treating the Ethiopia Drought as a *prioritized emergency***, and is already drawing on surge support from within the RBN region, HQ, and beyond



**Port congestion in Djibouti has been a major logistics constraint.** A Three Port Strategy, involving the use of Djibouti, Berbera and Port Sudan, form part of the logistics strategy for this emergency operation



**Transport capacity within Ethiopia is significantly over-stretched even at current levels of needs**



**Countrywide, distribution is lagging significantly behind dispatches.** This is mainly due to the limited distribution capacities at Woreda (district), Kebele (ward) and Food Distribution Point-level



**The Ethiopia Logistics Cluster has been activated,** primarily to support Government capacities at the hub level to plan, implement and track dispatches and distributions. A Special Operation to finance this support will be released in the coming weeks



## Inter-Agency

**All WFP-supported programmes are implemented by the Government**

**For the drought response, the lead partner is the Government’s National Disaster Risk Management Commission (NDRMC).**

- WFP partners with UNICEF and the Ministry of Health, and International NGOs for nutrition support.
- WFP partners with UNHCR and the Government’s Administration for Refugees and Returnees Affairs (ARRA) and international NGOs for refugee operations.
- Ministry of Agriculture and the donor working group is the partner for PSNP.
- For the Country Programme, WFP partners with the Ministry of Education for School Feeding; with the Ministry of Health for HIV/AIDS; and Ministry of Agriculture for the MERET land rehabilitation programme.
- WFP partners with FAO in the Home Grown School Meals programme in the SNNPR region.

## Clusters



WFP co-chairs the **Food Cluster** with the NDRMC, attended by NGOs and donor representatives.

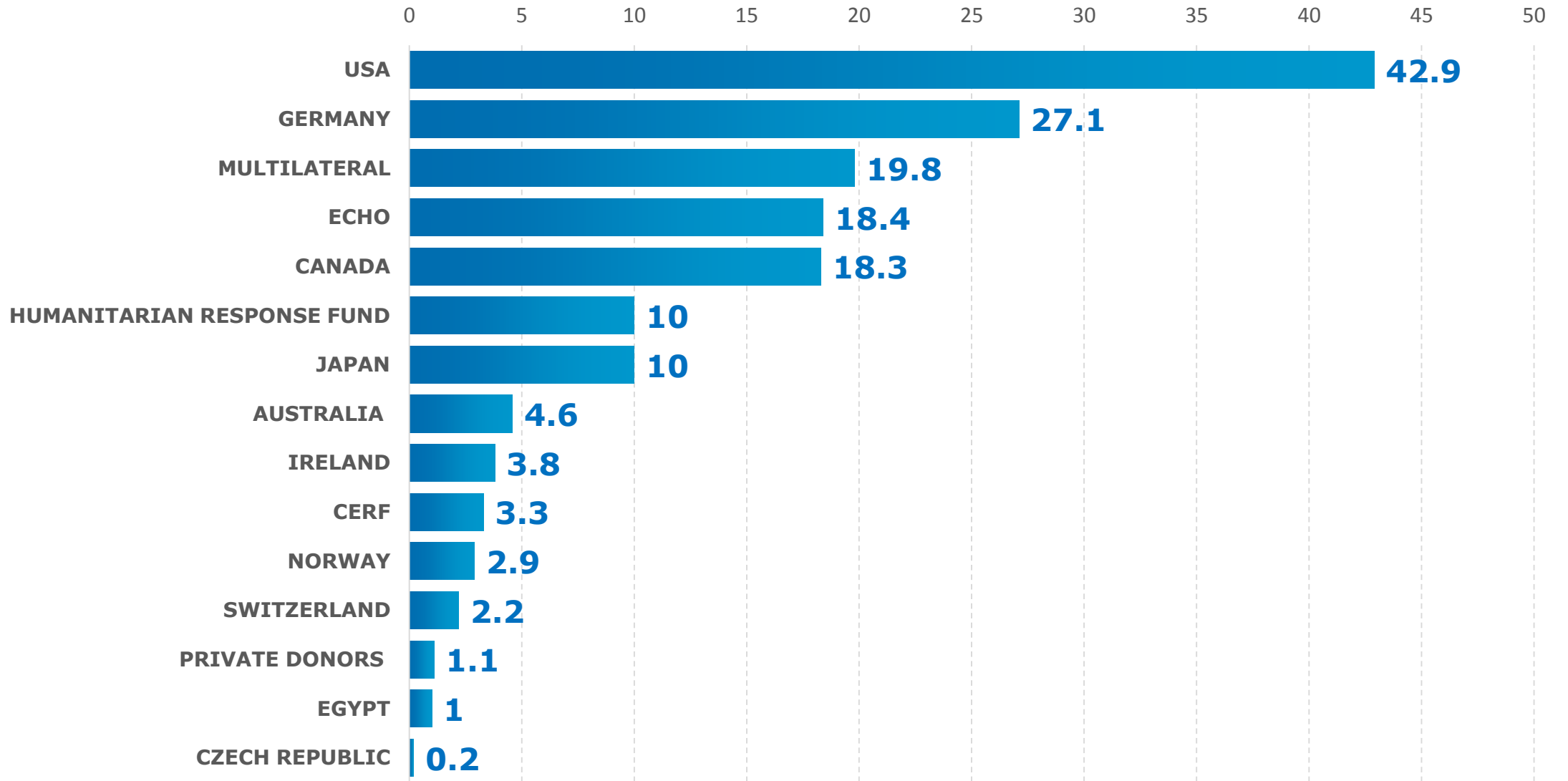


The **Logistics Cluster** was recently activated under NDRMC lead.



WFP also participates in the **Nutrition Cluster**, also led by the Ethiopian government and facilitated by UNICEF.

## 2016 to date (in USD millions)

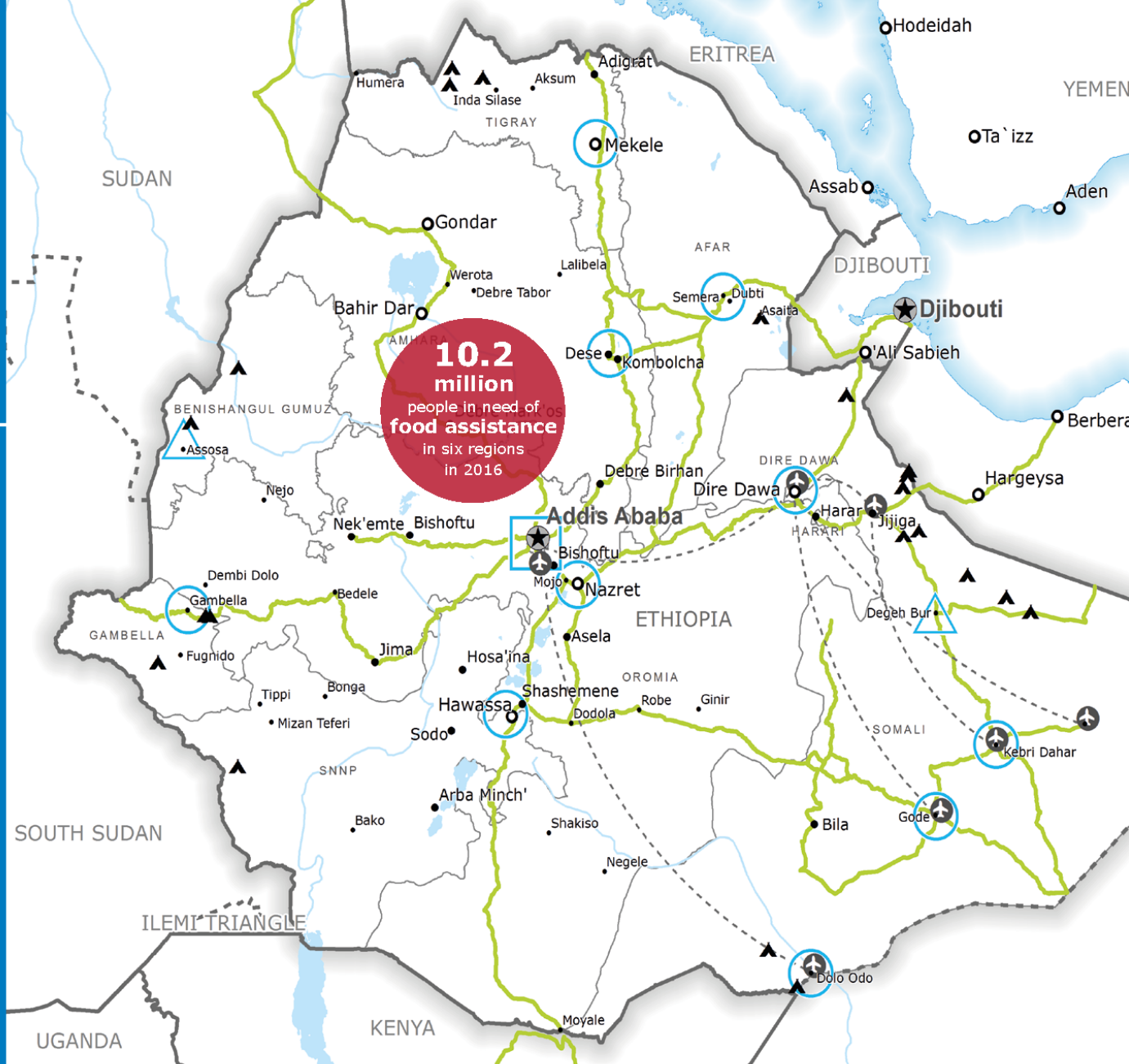


TOTAL: **USD 165.6 million**

# WFP EMERGENCY DASHBOARD

Emergency Dashboard  
March 2016

## Ethiopia Drought



- Country Office
- W Warehouse
- Sub Office
- Road Supply Route
- UNHAS Route
- Field Office
- Refugee / IDP Camp
- National Capital
- Major Town
- Intermediate Town
- Small Town
- International Boundary
- Undetermined Boundary
- First level admin Boundary

Sources: WFP, UNGIWG, GAUL, GLCSO, UNHCR  
The designations employed and the presentation of material in the map(s) do not imply the expression of any opinion on the part of WFP concerning the legal or constitutional status of any country, territory, city or sea, or concerning the delimitation of its frontiers or boundaries. © World Food Programme 2016

Contact: [WFP.OPSCEN@wfp.org](mailto:WFP.OPSCEN@wfp.org)  
Website: <http://opweb.wfp.org>

### DROUGHT RESPONSE FUNDING

Protracted Relief and Recovery Operation (PRRO) 200712

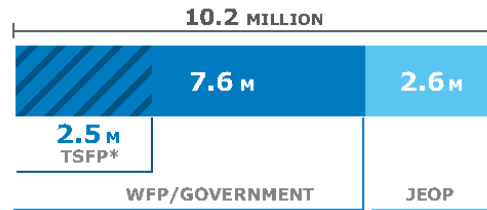


**USD 570 million** WFP funding shortfall for the rest of the year

### DROUGHT EMERGENCY ASSISTANCE

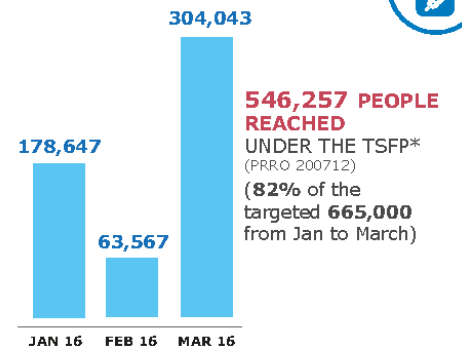


NUMBER OF PEOPLE TARGETED



Joint Emergency Operation Plan  
NGO Consortium

### MODERATE ACUTE MALNUTRITION SUPPORT



\*Targeted Supplementary Feeding Programme