

# Yemen

## 2016 Second Quarterly Operational Briefing

---

Presentation to the  
**WFP Executive Board**

WFP Rome Auditorium | 26 April 2016

**26 million** total population

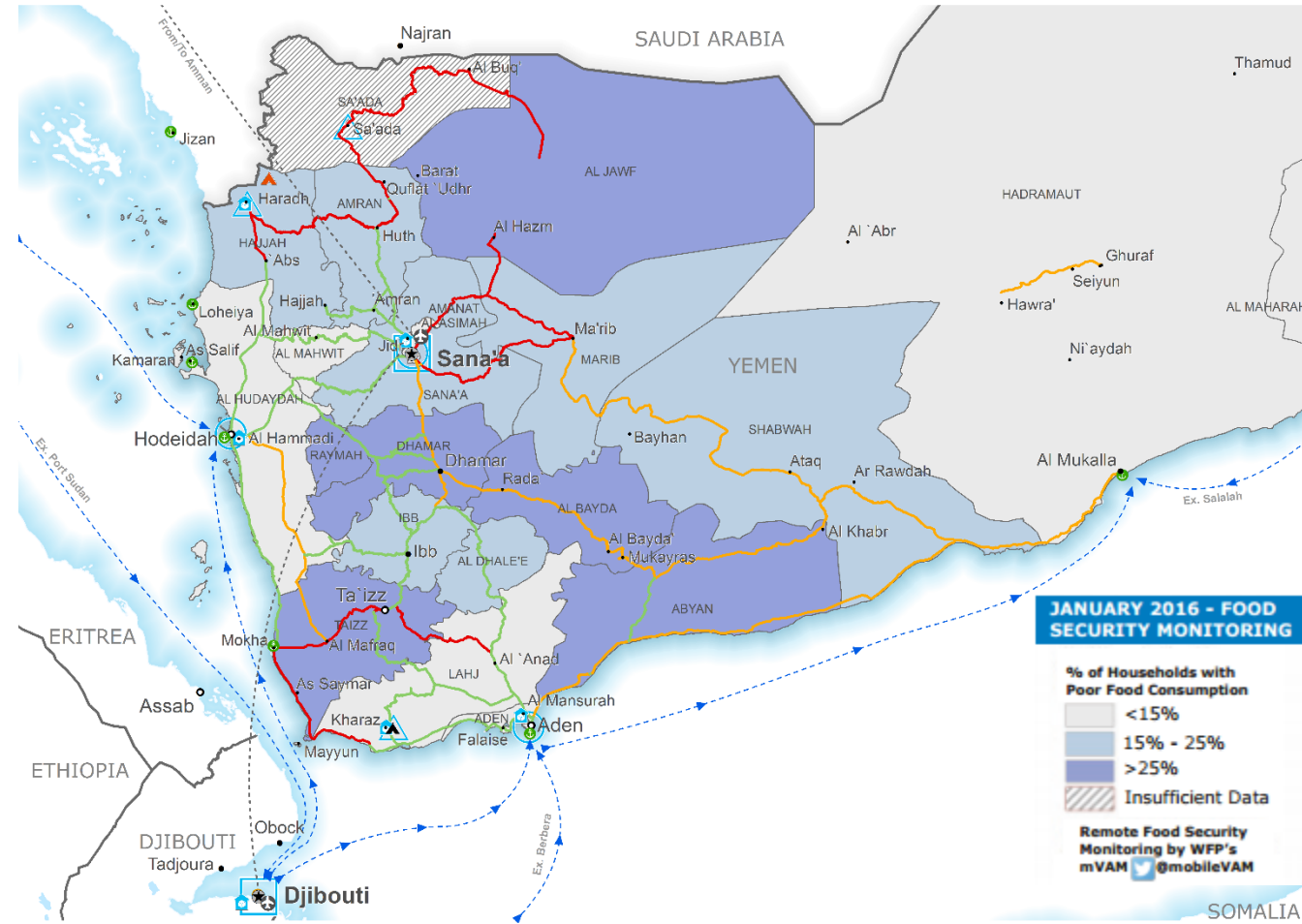
**21.2 million** people in need of humanitarian assistance

**14.4 million** people food insecure

**7.6 million** people severely food insecure

**4 million** people targeted by WFP in 2016

**2.8 million (one in ten)** Yemenis internally displaced



## **Overall security situation critical and volatile**

A year into the recent upsurge in violence, the security situation in Yemen continues to be characterised by aerial bombardments, and ground fighting in many parts of the country, severely limiting humanitarian access to conflict-affected populations.

### **Fighting intensifies in Taizz**

Intense fighting flared up in Taizz City between pro-government forces and militants in mid-March, underscoring the volatility of the situation in a governorate that hosts the largest number (620,934 people) of the 2.8 million Yemenis that been internally displaced. At the same time, fighting on the ground and coalition airstrikes continued in several governorates including Sa'ada, Amanat Al Asimah, Hajjah, Al Jawf, Marib and Sana'a, causing more people to move.

### **Peace prospects bring hope**

The peace talks scheduled to take place in Kuwait on 18 April have been delayed pending the agreement from one of the parties to the conflict to participate. Despite reportedly numerous breaches of the ceasefire that started on 10 April, it has largely been holding up.



## EMOP 200890

Emergency Food Assistance to Food Insecure and Conflict-Affected People in Yemen

October 2015 – December 2016



**3 million**

People targeted per month with GFD



**USD 749 million**

Overall budget to cover needs



**USD 358.7 million**

received



**USD 269 million**

6-month net funding requirements (July – December 2016)



### General Food Distribution

WFP provides a 1,542 kcal/day entitlement to all beneficiaries, representing 75 percent of full entitlements.



### Commodity-based Vouchers

In February, WFP launched a commodity-based voucher programme to speed up the delivery of food assistance and help revive commercial activities and markets in Yemen, aiming to reach 1 million people by the end of 2016.



### Nutritional Support

WFP provides nutritional support for the prevention and treatment of moderate acute malnutrition.



### Refugee Assistance

Assistance to refugees in Kharaz camp was phased into the EMOP from a previous PRRO; WFP targets around 20,000 refugees a month inside Yemen.

**SO 200845**

Providing Humanitarian Air Services (UNHAS) in Yemen

April 2015 – December 2016

**USD 19.4 million**  
budget to cover needs**USD 7.6 million**  
received

In March, UNHAS carried 530 passengers and 1,274 kg of light cargo between Djibouti and Sana'a for 15 UN agencies and 34 NGOs.

**SO 200841**

Logistics and Telecommunications support to Humanitarian Operations in Yemen

April 2014 – December 2015

**USD 43.1 million**  
budget to cover needs**USD 23.4 million**  
received

In March, the Logistics Cluster transported a total of 314.05 mt/1,827m<sup>3</sup> on behalf of DRC, ICRC, IMC, OXFAM, UNICEF, UNDP, UNHCR, and WHO.

## **Operational continuity**

Urgent funding is needed to ensure life-saving assistance beyond July 2016. By the end of July, WFP will run out of resources for all activities under EMOP 200890 if further funding is not secured.

## **Consistent achievement rate in reaching beneficiaries**

During February and March, WFP has consistently reached over 3 million beneficiaries. The priority is to stabilise this trend.

## **Gradual expansion of the commodity-based voucher intervention**

Starting from 116,000 beneficiaries in two governorates, WFP plans to expand to 1 million beneficiaries in nine governorates by November 2016.

## **Operational presence**

WFP has re-established its presence in Sana'a, Hudaydah on a permanent basis and maintains presence on a mission basis in Sa'ada, Ibb/Taizz and Aden. The operational presence in these hubs is to be further strengthened.

## **Third party monitoring**

In December 2015, WFP introduced a third party monitoring. A contracted company, Yemen Polling Centre (YPC), conducts on-site face-to-face monitoring, observes distributions and PDM beneficiary household surveys.

## **Remote M&E (live calls)**

The Jordan-based call center reached beneficiaries with mobile phones and conducts PDM beneficiary contact monitoring.

## **WFP Call Centre**

The Sana'a-based call center conducts interviews with CPs on distribution monitoring and conducts phone interviews with beneficiaries who report safety or protection concerns.

## **WFP Field Monitors**

Subject to security clearance, monitoring visits to distribution sites are conducted by WFP field monitors.

## **Products**

Monthly M&E reports (internal)

Quarterly report (internal/external)

Bi-annual PDM reports (internal)



**275** staff

**50** International  
**225** National



**Country Office** in Sana'a City

**Field Office** in Aden

**Field Office** in Sa'ada

**Field Office** in Sana'a

**Field Office** in Hudaydah

**Hubs** in Djibouti and Amman



**15 warehouses** with 76,000 mt  
capacity in the country



## Cooperating Partners

CARE International  
Danish Refugee Council (DRC)  
Humanitarian Aid and Development  
International Medical Corps  
International Rescue Committee  
Islamic Relief Yemen  
Mercy Corps  
Norwegian Refugee Council (NRC)  
Première Urgence – Aide Médicale  
Internationale  
Relief International  
Save the Children International  
Vision Hope International

### Local NGOs:

Abs Development Organization  
Charitable Society for Social Welfare  
Field Medical Foundation  
National Foundation for Development  
and Humanitarian Response  
Society for Humanitarian Solidarity

### Government Ministries:

Ministry of Education  
Ministry of Public Health and  
Population



## Access Constraints

- Denial/delay in the security clearances affects access to certain governorates. Over the past months, access to Al Jawf, Marib, Taizz governorates has been constrained
- Broken chain of command hampers rapid delivery of assistance
- Ongoing conflict and clashes delays truck movement
- Poor road infrastructure affects timely delivery of assistance

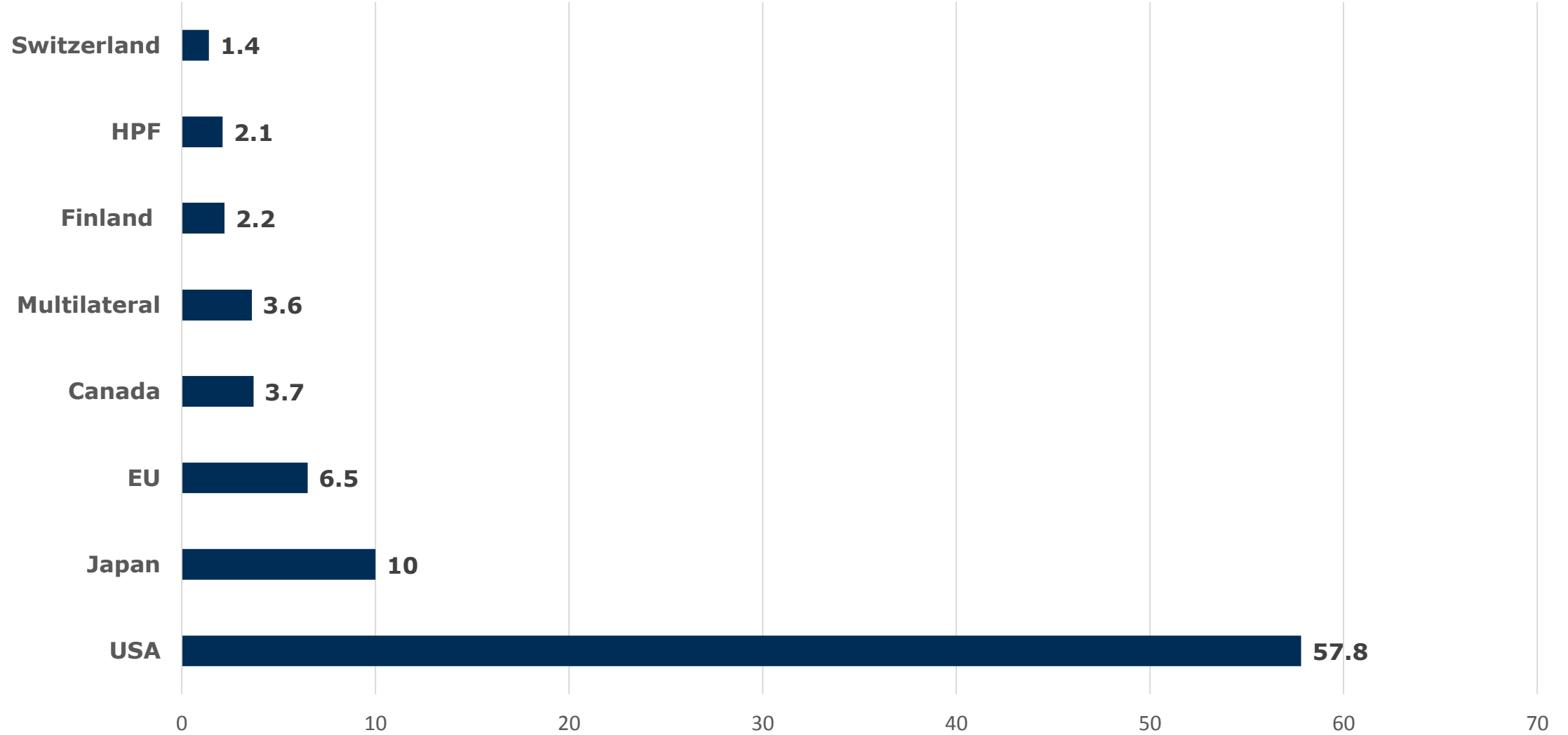
## Resourcing Constraints

- WFP Yemen needs on average USD 59.4 million per month to sustain life-saving activities: USD 42 million for emergency food assistance through in-kind distributions, USD 14 million for the commodity vouchers, USD 3 million for nutrition and USD 0.4 million for refugees.

## Capacity Constraints

- Limited presence of international staff in the country
- Limited capacity of partners

# 2016



**TOTAL:** USD 87.3 million

## Inter-Agency

- Together with UNICEF and WHO, WFP launched Community Management of Acute Malnutrition scale up plan
- Together with UNICEF and FAO, WFP planned to implement an Emergency Food Security and Nutrition Assessment
- Together with UNDP, FAO and ILO, WFP is engaged in the implementation of the project on Enhancing Rural Resilience in Yemen

## Clusters

- WFP leads the Logistics Cluster and Emergency Telecommunications Cluster
- WFP co-leads the Food Security and Agriculture Cluster
- WFP participates in the Nutrition and Protection Clusters

## CONTEXTUAL RISKS:

- High levels of insecurity due to ongoing conflict
- Political instability
- High fuel and food prices
- Lack of donor funds and negative forecasts

## PROGRAMMATIC RISKS:

- Inability to provide full entitlements
- Lack of access (monitoring)
- Lack of access (operational)

## INSTITUTIONAL RISKS:

- Limitations in staff number due to staff ceiling
- Office and support services located in different areas/countries
- Staff safety

<b>RISKS</b>	<b>MITIGATION MEASURES</b>
<b>High levels of insecurity due to ongoing conflict</b>	<ul style="list-style-type: none"> <li>• Remote working arrangements</li> <li>• Use of hubs outside of operating context</li> </ul>
<b>High fuel and food prices</b>	<ul style="list-style-type: none"> <li>• Continued monitoring of the situation</li> </ul>
<b>Lack of donor funds and negative forecasts</b>	<ul style="list-style-type: none"> <li>• Planned donor meetings</li> <li>• Budget revisions</li> </ul>
<b>Inability to provide full entitlements</b>	<ul style="list-style-type: none"> <li>• Awareness-raising activities amongst beneficiaries and donor community</li> </ul>
<b>Lack of access (monitoring)</b>	<ul style="list-style-type: none"> <li>• Third-party monitoring</li> <li>• Beneficiary feedback mechanisms</li> </ul>
<b>Lack of access (operational)</b>	<ul style="list-style-type: none"> <li>• Coordination through Food Security and Logistics Clusters</li> </ul>

RISKS	MITIGATION MEASURES
<b>Limitations in staff number due to staff ceiling</b>	<ul style="list-style-type: none"><li>• Remote working modalities</li></ul>
<b>Office and support services located in different areas/countries</b>	<ul style="list-style-type: none"><li>• Increased coordination</li></ul>
<b>Staff safety</b>	<ul style="list-style-type: none"><li>• Adherence to all relevant security requirements</li></ul>

- Reduced entitlements
- Inability to reach affected areas
- Inability to fully monitor
- Staff safety
- Escalation of conflict & subsequent inability to immediately scale-up in case of increased people needing assistance

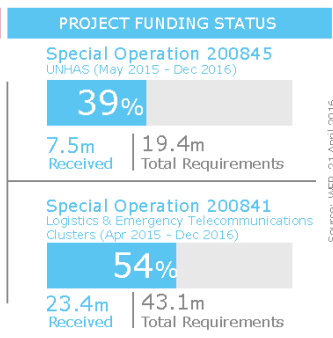
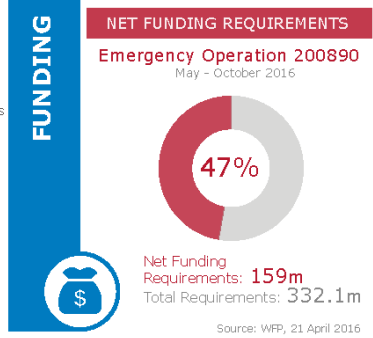
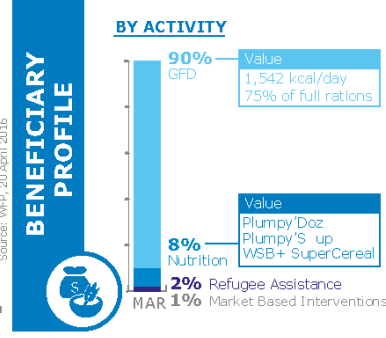
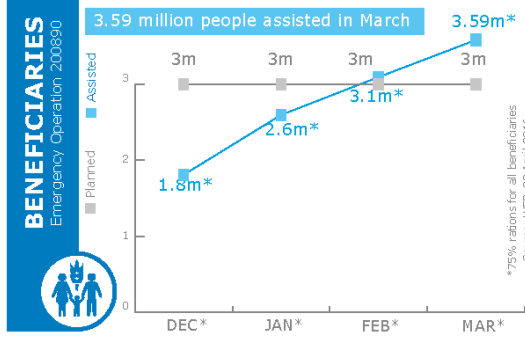
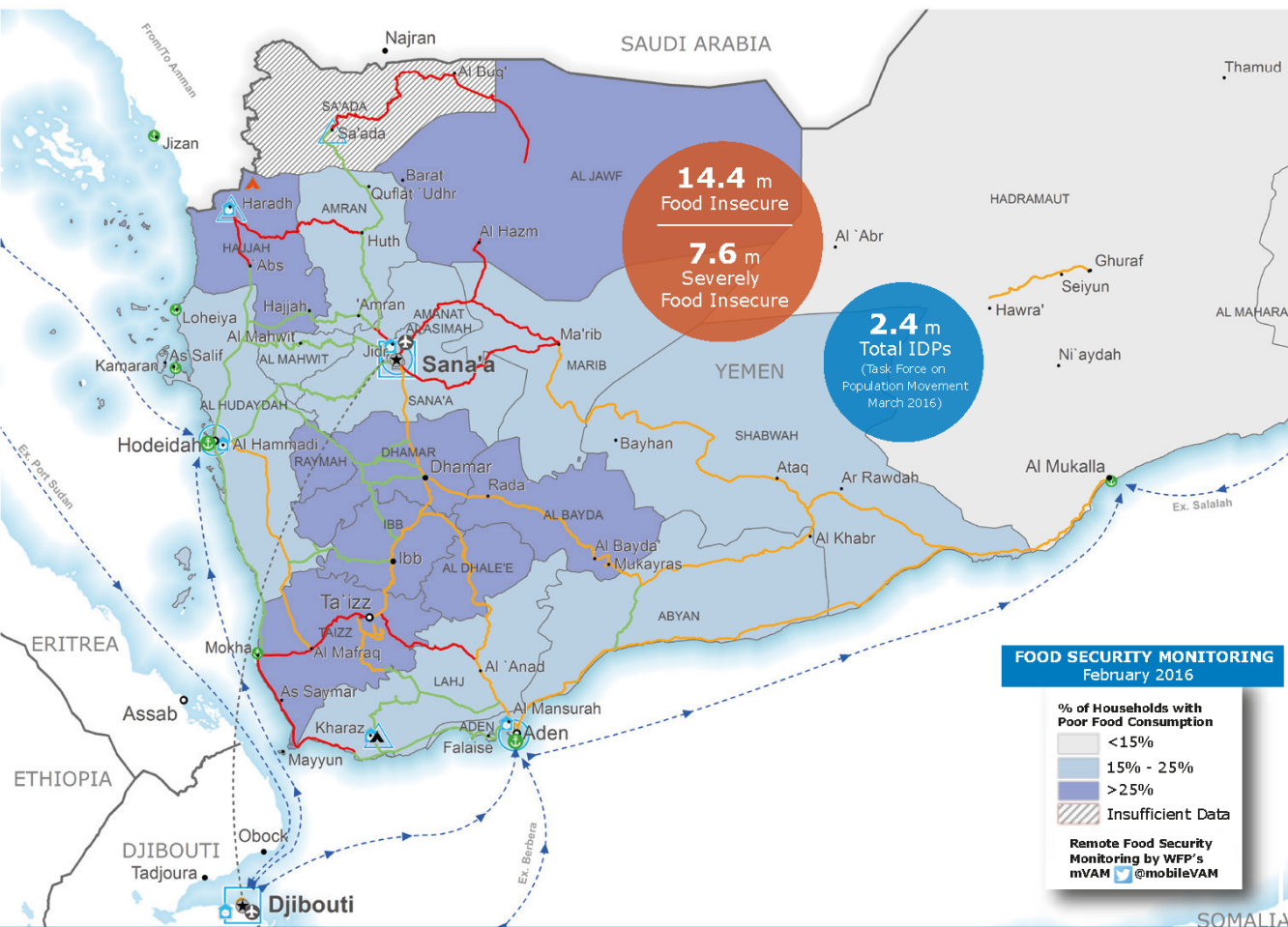
# WFP EMERGENCY DASHBOARD



Yemen

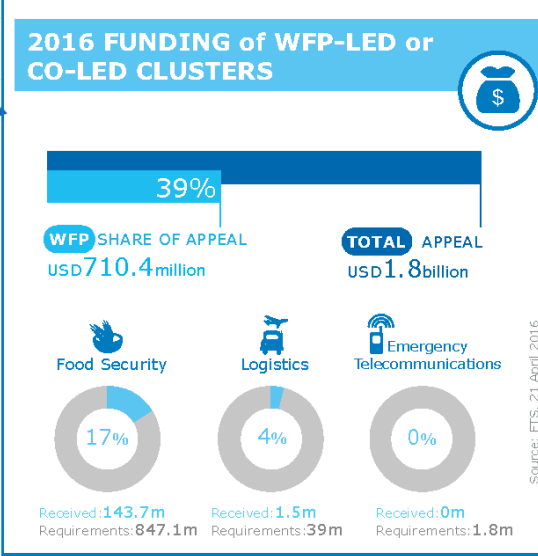
Emergency Dashboard  
March 2016

- Country Office
- Warehouse
- UNHAS Connection
- Road Open
- National Capital
- International Boundary
- Sub Office
- IDP Camp
- UNHAS Connection
- Road With Restricted Access
- Major Town
- Governorate Boundary
- Field Office
- Refugee Camp
- Port Operational
- Closed Road
- Intermediate Town
- Small Town
- Transit Camp
- Port with Restricted Access
- Supply Road Open



**OPERATIONAL CHALLENGES**

- Humanitarian Access
- Insecurity
- Resources



**WFP LEVEL 3 EMERGENCY**  
SINCE 03 JULY 2015  
IASC LEVEL 3 (SINCE 01 JULY 2015)

Check the **COUNTRY BRIEF** <https://www.wfp.org/countries/yemen>

Produced by the WFP **Operations Centre (OPSCEN)**  
This dashboard is based on best available information at the time of production. Future updates may vary as new information becomes available.

Sources: WFP, UNGIWS, GAUL, GLCSC, OCHA, UNHCR, mVAM  
The designations employed and the presentation of material in the map(s) do not imply the expression of any opinion on the part of WFP concerning the legal or constitutional status of any country, territory, city or sea, or concerning the delimitation of its frontiers or boundaries. © World Food Programme 2016