



Distribution: General

Date: 16 November 2016

Original: English

* Reissued for technical reasons

Agenda Item 8

WFP/EB.2/2016/8-B/1/Rev.1*

Projects for Executive Board Approval

For approval

Executive Board documents are available on WFP's Website (<http://executiveboard.wfp.org>).

Protracted Relief and Recovery Operations — Syrian Arab Republic 200988

Food, Nutrition and Livelihood Assistance to the People Affected by the Crisis in the Syrian Arab Republic

Number of beneficiaries	5.74 million
Duration of project	January 2017 to December 2018 (24 months)
Gender marker code*	2A
WFP food tonnage	1,437,267 mt
Cost (United States dollars)	
Food and related costs	1,312,465,661
Cash-based transfers and related costs	97,959,819
Capacity development and augmentation	6,227,183
Total cost to WFP	1,595,980,331

* <https://www.humanitarianresponse.info/system/files/documents/files/gm-overview-en.pdf>.

Executive Summary

The conflict in the Syrian Arab Republic has led to approximately 300,000 deaths and injured more than 1 million people since 2011; 4.8 million people have left the country, 6.1 million have been internally displaced and overall 13.5 million people need humanitarian assistance. Widespread destruction of schools and hospitals has affected the delivery of education and medical services. Agriculture has suffered, and unemployment and poverty have increased tenfold.

Eighty percent of Syrians are now living in poverty, 9.4 million are food-insecure or at risk of food insecurity, wasting is above 7 percent and stunting is 23 percent. Primary school enrolment rates have halved since 2010.

Focal points:

Mr M. Hadi
Regional Director
Middle East, North Africa, Eastern Europe and Central Asia
email: muhannad.hadi@wfp.org

Mr J. Kern
Country Director
email: jakob.kern@wfp.org

Protracted relief and recovery operation 200988 will provide life-saving food assistance for 5.74 million people, and will gradually shift to recovery and livelihood activities. The priority is to meet the basic food needs of food-insecure people, but the operation will also enable WFP to reduce humanitarian needs; however, the volatile security situation will continue to represent a constraint. The operation is based on recent evaluations and assessments and is consistent with the Sustainable Development Goals, the Zero Hunger Strategy, WFP's Strategic Objectives, the Syrian Arab Republic Humanitarian Response Plan and the United Nations Strategic Framework.

WFP will address gender disparities that influence food security and ensure that beneficiaries are adequately protected; it will deliver assistance through cash-based transfers and introduce mobile data-collection and beneficiary information management systems. Recognizing that a political settlement is an essential condition for sustainable outcomes, WFP will enhance the capacities of institutions and civil society and expand private-sector partnerships to support its supply chain.

Draft decision*

The Board approves the proposed protracted relief and recovery operation Syrian Arab Republic 200988 "Food, Nutrition and Livelihood Assistance to the People Affected by the Crisis in the Syrian Arab Republic" (WFP/EB.2/2016/8-B/1/Rev.1*).

* This is a draft decision. For the final decision adopted by the Board, please refer to the Decisions and Recommendations document issued at the end of the session.

Situation Analysis

Context

1. Conflict and the resulting humanitarian crisis in the Syrian Arab Republic have led to approximately 300,000 deaths and injured more than 1 million people since 2011.¹ Civilians are seriously at risk, and women, men, girls and boys may be affected differently.
2. The 2016 Humanitarian Response Plan (HRP) showed that 50 percent of the population have been forced to abandon their homes. Of the 6.1 million internally displaced people (IDPs), 1.7 million live in 3,000 camps and the remainder with host families; 1.3 million people hosting IDPs have become destitute. The number of people who have sought refuge outside the country is 4.8 million.
3. The 2016 HRP identified 13.5 million people, of whom 6 million are children, as in need of humanitarian assistance and stated that 25 percent of schools and 50 percent of hospitals are damaged, destroyed or occupied. The exodus of medical personnel and shortages of medicines mean that many people do not have access to medical care and that preventable diseases are spreading; life expectancy has been reduced by 20 years.
4. Since 2011² the country has fallen from 113th to 134th in the United Nations Development Programme (UNDP) Human Development Index (HDI), and 82 percent of Syrians now live in poverty compared with 12 percent before the crisis.³ Primary school enrolment rates have fallen from 100 percent to 50 percent – boys and girls are equally affected – and 2 million children are not in school. Many girls and boys are engaged in various forms of child labour, with boys facing the additional risk of recruitment by armed groups and girls that of early marriage. Young Syrians are being deprived of education and training opportunities.
5. The economy contracted by 55 percent between 2010 and 2015 in terms of gross domestic product: losses are estimated at USD 260 billion.⁴ The serious decline in oil production has reduced government revenues, and international reserves have declined from USD 20 billion to USD 0.7 billion. The consequent spending cuts have significantly reduced wages and salaries and hence internal demand. The value of the currency has depreciated from SYP 47/USD 1 to SYP 500/USD 1 since 2010.
6. The situation is exacerbated by unilateral sanctions that have increased the cost of imported inputs for farmers and manufacturers. Cutbacks and closures in the import and export sectors have led to loss of employment among low-skilled workers, mainly men.⁵ A rise in unemployment from 10.3 percent in 2011 to 54 percent in 2015 caused an increasing number of people to migrate to seek employment. Women, who are increasingly becoming family breadwinners, now head 33 percent of households. Droughts are compromising agricultural productivity.

¹ United Nations. *2015 Strategic Response Plan: Syrian Arab Republic*.

² United Nations Strategic Framework for Cooperation, 2016–2017.

³ UNDP. 2010. *Syrian Arab Republic Third National MDGs Progress Report*. Damascus.

Syrian Centre for Policy Research. 2015. *Alienation and Violence, Impact of Syria Crisis Report 2014*. Damascus.

⁴ United Nations Economic and Social Commission for Western Asia (ESCWA). 2016. *Syria at War: Five Years On*. <https://www.unescwa.org/publications/syria-war-five-years>

⁵ Syrian Centre for Policy Research. 2015. *Alienation and Violence, Impact of Syria Crisis Report 2014*. Damascus.

Population	18.5 million ⁷
Gross national income per capita	USD 1,573
UNDP HDI ranking	134
UNDP Gender Inequality Index	0.533; 119 th of 155 countries
Primary net enrolment	Girls 51.9 percent; boys 48.1 percent
Adult literacy rate	84.1 percent
Life expectancy at birth	Girls 77.6; boys 71 years
Infant mortality/1,000 live births	17.7
Fertility rate, live births per woman	3.0

Food Security and Nutrition

7. In 2015, the Food and Agriculture Organization of the United Nations (FAO) classified the Syrian Arab Republic as a low-income food-deficit country with production of wheat, fruit, vegetables, dairy and meat at 40 percent lower than pre-conflict levels. The country relies on imports to supply domestic needs. Preliminary results from the 2016 crop and food security assessment mission are bleak, with low rainfall and increased transaction costs for farmers.
8. Access constraints and insecurity affect markets through increased transaction costs, security risks and high prices. Insecurity has slowed deliveries of wheat from the northeast, leading to an accumulation of unsold stocks; the west of the country largely relies on imports. High fuel prices and depreciation of the Syrian pound mean that the standard monthly food basket now costs the equivalent of USD 160 compared with USD 20 before the crisis, an eightfold increase; the monthly salary of a school teacher is equivalent to USD 40.

⁶ World Development Indicators 2016, World Bank; United Nations Statistics Division, UNDP Human Development Report, 2015.

⁷ The figure is the preliminary figure for the 2017 Humanitarian Needs Overview.

TABLE 2: FOOD SECURITY AND NUTRITION DATA	
Food insecurity ⁸	Food-insecure Women/girls: 3.4 million Men/boys: 3.3 million
	Borderline food consumption Households headed by women: 12% Households headed by men: 8%
	Poor food consumption Households headed by women: 31% Households headed by men: 29%
Global Hunger Index (GHI) ⁹	2014 hunger index ranking: 8/76 (5.9)
	2014 world risk index: 102/171
Global Food Security Index ¹⁰	2016 ranking 96, score 36.6
Stunting – children under 5 ¹¹	22.3%: girls: 21.1%; boys: 23.5%
Wasting – children aged 6–59 months	7.2%: girls: 7.4%; boys: 7%
Moderate acute malnutrition (MAM) – children aged 6–59 months ¹¹	4.9%: girls: 5.3%; boys: 4.5%
Anaemia prevalence ¹²	Children under 3: 22.3%; women/girls: 22.39%; men/boys: 22.2% Women of child-bearing age: 44%
Vitamin A deficiency	8.7%
Iodine deficiency (moderate to severe)	13%
Overweight 2008–2012, moderate and severe ¹³	17.9%
Below poverty line ¹⁴	82%
Extreme poverty	64.7%
% of income spent on food ¹⁵	55%

9. In the Syrian Arab Republic 6.7 million people are food-insecure and 2.7 million are at high risk of becoming food-insecure.¹⁶ The most vulnerable groups are IDPs, returnees and households living in remote or besieged areas; in the latter all inhabitants are food-insecure, and access to assistance is intermittent.
10. Households headed by women tend to utilize more negative coping mechanisms, which may include early marriage, than those headed by men, and are 10 percent more likely to be food-insecure and vulnerable. Women's disadvantages in terms of employment are compounded by their care responsibilities and exposure to gender-based violence.

⁸ WFP: 2015. Comprehensive food security and vulnerability (CFSVA) assessment and 2016 review of food security baseline data.

⁹ ACAPS. 2016. Syrian Arab Republic Country profile. <https://www.acaps.org/country/syria/country-profile>

¹⁰ Economist Intelligence Unit (EIU). 2016. *Global Food Security Index*. <http://foodsecurityindex.eiu.com/Country/Details#Syria>

¹¹ Rapid Nutrition Assessment of IDPs, United Nations Children's Fund (UNICEF)/Ministry of Health, 2014. http://reliefweb.int/sites/reliefweb.int/files/resources/Nutrition%20Section%20UNICEF%20FactsFigures_September%202015.pdf

¹² Ministry of Health/World Health Organization. 2007. Iron Deficiency Anaemia Study.

¹³ UNICEF. *At a glance: Syrian Arab Republic*. http://www.unicef.org/infobycountry/syria_statistics.html

¹⁴ Ibid p. 11

¹⁵ FAO and WFP. Crop and food security assessment mission, 2015.

¹⁶ Food Security Sector .2016. *Food Security Sector Whole of Syria Mid-Year Review 2016*. <http://reliefweb.int/report/syrian-arab-republic/food-security-sector-whole-syria-mid-year-review-2016>

11. Among food-insecure households, 88 percent cope by relying on cheap and low-quality foods, 25 percent by borrowing food and depending on friends and relatives, 40 percent by reducing the size of meals, 23 percent by reducing the number of meals and 24 percent by prioritizing meals for children. Poor diets combined with reduced access to health services increase vulnerability to malnutrition and disease.
12. The nutrition situation in the Syrian Arab Republic remains poor (see Table 2).¹⁷ A few locations have rates of global acute malnutrition below 5 percent. Micronutrient deficiencies are widespread, with moderate to high prevalence of anaemia among women of reproductive age and children; undernutrition rates in besieged areas are higher than elsewhere. Stunting rates are 25.9 percent in the lowest income levels and 18.5 percent in the upper income levels.
13. Food insecurity is higher in rural than in urban areas, where there are more markets and income opportunities. The large-scale displacement of food-insecure IDPs to urban areas has significantly increased food insecurity and competition for limited income-generating opportunities.
14. WFP and its partners regularly monitor the food-security situation and population movements to inform operational planning. Food insecurity could deteriorate during 2017 as a result of restricted trade, closure of border crossings, currency devaluation, high transport costs, drought and large-scale refugee returns. These factors are likely to drive up the prices of locally produced food as stocks are further depleted.
15. Between 2014 and 2016 acceptable food consumption scores improved from 32 percent to 72 percent among beneficiaries of general rations and from 29 percent to 100 percent among pregnant and lactating women (PLW) who received additional food vouchers. The PLW dietary diversity score also improved from 4.90 to 6.95.

Government

16. The Government is prioritizing resilience, basic needs, nutrition and community infrastructure. It plans to re-energize the agricultural sector, foster the return and integration of IDPs and build institutional capacities.
17. The main safety net is the National Aid Fund, which provides small cash allocations through non-governmental organizations for vulnerable families, orphans, persons with disabilities and households headed by women. In the absence of a national nutrition strategy, the Ministry of Health introduced the nutrition sector strategy in 2013.

Other Partners

18. WFP will continue its partnerships with: i) the UNICEF and the World Health Organization on nutrition; ii) UNICEF and the United Nations Relief and Works Agency for Palestine Refugees in the Near East on school feeding; iii) FAO, the International Labour Organization, UNDP and UN-Habitat on livelihoods and resilience; and iv) the United Nations Population Fund (UNFPA) on improved access to health services for PLW. WFP and FAO will continue to promote greater food production and the availability of nutritious foods. WFP, FAO, UNDP, UNICEF, UN-Habitat and the UNFPA are developing livelihood and recovery programmes in stable parts of the country.
19. WFP is part of the Syrian country team and the Whole of Syria coordination structure, which has hubs in Amman and in Gaziantep in Turkey; it leads the logistics and emergency telecommunication clusters and co-leads the food security sector with FAO. WFP participates in the education, nutrition and protection sectors and is a member of the National Steering Committee on Iodine-Deficiency Disorders, the Community Management of Acute Malnutrition Technical Working Group and the Standardized Monitoring and Assessment of Relief and Transitions survey committee.
20. WFP works with 40 cooperating partners to deliver assistance internally and from the hubs in Amman and Gaziantep; private-sector companies help to implement cash-based transfers (CBTs) and third-party monitoring. These partnerships enhance the delivery of assistance and programme monitoring through triangulation with other data sources. WFP will train partners' staff in food

¹⁷ The World Health Organization defines global acute malnutrition prevalence between 5 percent and 9 percent as "poor".

security assessment, beneficiary selection, nutrition, protection, gender mainstreaming, warehouse management, monitoring and reporting.

Strategies

21. In line with the Syria+Five Vision 2020, WFP aims to: i) shift from emergency to livelihood programmes; ii) invest in people through nutrition, school feeding and training; iii) restore livelihoods; and iv) build local capacities, safety nets and food value chains. Protracted Relief and Recovery Operation (PRRO) 200988 is consistent with Sustainable Development Goals (SDGs) 2 and 17, the Zero Hunger strategy, the United Nations Strategic Framework and the 2016 Syrian Arab Republic HRP and WFP's Strategic Objectives 1, 2 and 4, its gender and protection policies and the draft corporate results framework for 2017–2021.

WFP Response

22. PRRO 200988 builds on emergency operation 200339 and lessons from two audit reports and an independent evaluation. The shift to the PRRO approach reflects the various and changing situations in different parts of the country: in areas affected by conflict access is constrained and a sustained humanitarian response is required; in relatively stable areas access is easier and recovery-oriented programmes can be implemented. PRRO 200988 is based on the principle of “do no harm”; its livelihood and school feeding programmes aim to restore a sense of normality, reduce needs and prepare for a post-conflict context.

TABLE 3: RESULTS HIERARCHY

Strategic Objective	Strategic result	Activity	Modality
Strategic Goal 1: Support the Syrian Arab Republic to achieve zero hunger (SDG 2)			
<p>Strategic Objective 1: End hunger by protecting access to food</p> <p>Strategic Result 1: Everyone has access to food</p> <p>Operational outcome 1.1: Stabilized or improved food consumption reached for targeted households</p> <p>Operational outcome 1.2: Improved and maintained access to education and learning skills</p> <p>Operational outcome 1.3: Improved and maintained access to livelihood assets for targeted communities and households</p>	<p>Syrian Arab Republic HRP</p> <p>Strategic framework focus area 2: restore and expand essential services and infrastructure</p> <p>Outcome 2: social services and infrastructure improved and sustained to enhance community resilience</p> <p>Output 2.2: school-age girls and boys and adults have equitable access to pre-primary, basic, secondary and alternative education with a focus on vulnerable groups</p> <p>Strategic framework focus area 3: improving socio-economic resilience</p> <p>Outcome 3: households and communities benefit from sustainable livelihood opportunities</p> <p>Output 3.1: income, sustainable livelihood opportunities and inclusive local economic development are restored and maintained</p>	<p>General food assistance</p> <p>School meals</p> <p>Food assistance for assets (FFA)</p>	<p>Food</p> <p>Food CBTs</p> <p>Food CBTs</p>
<p>Strategic Objective 2: Improve nutrition</p> <p>Strategic Result 2: No one suffers from malnutrition</p> <p>Operational outcome 2.1: Higher quality, nutrient-dense diets are consumed among target beneficiaries</p> <p>Operational outcome 2.2: Improved dietary intake and health among target beneficiaries through nutrition-sensitive programming</p>	<p>Strategic framework focus area 2: restoring and expanding more responsive essential services and infrastructure</p> <p>Outcome 2: social services and infrastructure restored and improved to enhance community resilience</p> <p>Output 2.1: people have equitable access to quality health and nutrition services with a focus on vulnerable groups</p>	<p>Nutrition: treatment of moderate acute malnutrition</p> <p>Nutrition: prevention of acute malnutrition and micronutrient deficiencies</p>	<p>Food</p> <p>CBTs</p> <p>Food</p>
Strategic Goal 2: Partner to support implementation of the SDGs (SDG 17)			
<p>Strategic Objective 4: Support SDG implementation</p> <p>Strategic Result 4: Enhanced Syrian capacity to implement the SDGs</p> <p>Operational outcome 4.1: Innovations and best practices introduced by WFP are scaled up by partners</p>	<p>Strategic framework focus area 1: capacity development and support for institutions</p> <p>Outcome 1: targeted institutions have mechanisms to develop, implement and monitor evidence-based policies, strategies, plans and resilience programmes</p> <p>Output 1: targeted institutions systematically collect and use disaggregated data to inform policies and strategies</p>	<p>Capacity development of partners and institutions</p>	

Lessons Learned

23. The external evaluation recommended that WFP gather household-level vulnerability information to improve targeting and that the choice of programme type be based on specific evidence, assessments and monitoring data that take context and gender into account. A protection and gender specialist will be based in the country, and PRRO 200988 will incorporate vocational training for women and young people according to needs identified in consultations.
24. WFP has developed a robust beneficiary targeting and selection tool to help cooperating partners to target the most vulnerable households: it includes vulnerability indicators such as duration and number of displacements and the gender of household heads and socio-economic data. Assessment tools guide cooperating partners in emergency responses involving sudden displacement. The use of remote data-collection methods will enhance monitoring and food security analysis in inaccessible areas and inform decision-making.
25. WFP is expanding its partner base for PRRO 200988. The activities, particularly for livelihoods, are designed to include a larger and more diverse group of partners to maximize access to beneficiaries.
26. Following the 2016 CBT review, PRRO 200988 will expand the utilization of CBTs in various activities by issuing cards through WFP's beneficiary and transfer-management platform (SCOPE) where feasible. The selection of modality will be informed by the current feasibility study, which will examine the effects of issuing CBTs to women and men, and the effects of CBTs on food markets.
27. WFP will continue to use its various delivery modalities to reach populations in need. Delivery of assistance by air will be a last resort.

Activities and Modalities

28. PRRO 200988 will maintain a significant relief component to assist 4.5 million food-insecure people. This will be part of the food-security sector response involving the International Committee of the Red Cross and non-governmental organizations to assist 6.7 million food-insecure people, particularly the 590,000 people in 18 besieged areas. WFP will maintain the flexibility to respond to new emergencies as part of PRRO 200988 and will adapt its access modalities to local situations.
29. Relief assistance will be provided in the form of general food assistance (GFA). Monthly distributions will be safe and dignified and will take into account gender and protection concerns. In view of the importance of bread in the Syrian diet, WFP will distribute wheat flour directly to beneficiaries in rural areas, where bread is baked in the home, and through bakeries in towns and areas where there are bread shortages. WFP will supply bakeries with inputs such as wheat flour and yeast in areas where bread prices are particularly high.
30. As part of the emergency response, WFP is enhancing its capacity to respond rapidly to sudden displacements: this will entail the provision of ready-to-eat¹⁸ family rations in the initial days when cooking facilities are unavailable. Because these rations do not contain food appropriate for young children, the country office is seeking ways to include lipid-based nutrient supplements (LNS) such as Plumpy'Doz in rations for families with children aged 6–23 months. Emergency responses will be based on rapid needs assessments.
31. Nutrition interventions will include a supplementary feeding programme to prevent acute malnutrition and micronutrient deficiencies among children aged 6–23 months and a targeted supplementary feeding programme to treat cases of MAM in children aged 6–59 months and PLW as part of the community-based management of acute malnutrition approach in collaboration with the Ministry of Health and UNICEF. Support for PLW will be expanded to improve dietary diversity. If the security situation improves, nutrition interventions will shift to community-based interventions to address stunting and chronic undernutrition in the recovery phase.

¹⁸ The five-day ration per family of five consists of 2.8 kg canned fava beans, 3.6 kg hummus, 1 kg canned meat, 0.8 kg canned vegetables, 0.5 litres olive oil, 3 cans of tuna and 1 litre of juice. Bread will be provided by cooperating partners.

32. A gradual transition of some GFA beneficiaries to the recovery component for returning IDPs, refugees and host communities is anticipated. Returnees will receive an initial relief package for a minimum of six months, after which they will move to livelihood activities. The needs of special groups such as elderly and persons with disabilities will be taken into account in the selection of livelihood activities. As part of its Vision 2020, WFP will adapt social safety nets to incorporate people who are not covered by livelihood activities.
33. The recovery component will include activities to support livelihoods and alleviate household shocks by addressing immediate needs, restoring and building assets and infrastructure, and enhancing household and community capacities in accessible areas. These activities will target households with limited incomes with a view to supporting livelihoods and laying the foundations for long-term resilience-building. Interventions targeting women and young people will be prioritized, focusing on vocational training adapted to employment opportunities.
34. Beneficiaries will include small-scale food producers and manufacturers affected by the conflict who have the capacity to generate employment and stimulate markets. WFP is partnering with research institutions to analyse food value chains, assess market demand and identify entry points in support of small-scale and medium-scale businesses. With technical support from partners such as agricultural cooperatives and chambers of commerce, the targeted businesses will be helped to restore their operations and hence provide employment for vulnerable communities. WFP will link beneficiaries to business associations providing extension services to ensure long-term sustainability.
35. Initiatives related to agriculture, livestock-raising and food processing and preservation will be designed in consultation with beneficiaries including women and young people so that their preferences are taken into account. Links with the regional PRRO will involve training in the skills required by returning refugees. Food assistance for training (FFT) will be used to support vocational training projects in subjects such as sewing, plumbing and carpentry; FFA will support household projects such as kitchen gardens, poultry-raising and honey production, and community projects such as road repairs.
36. Participants will be selected and activities designed in consultation with community members to ensure that their needs and preferences are taken into account. In-kind food assistance will be provided initially, with a gradual transition to CBTs according to context.
37. The value of the CBT voucher for FFT and FFA reflects the current value of a standard monthly food basket and increases anticipated over the next two years.
38. The school feeding programme will be implemented in collaboration with UNICEF and the Ministry of Education and other education-sector partners in areas with high food insecurity and low education indicators. Locally produced fortified date bars will be provided together with milk for children at pre-primary and primary schools. WFP will provide a monthly CBT voucher to enable vulnerable out-of-school children to benefit from alternative education programmes supported by UNICEF. Schoolchildren must have an attendance rate of at least 80 percent to qualify for this assistance.
39. Special attention will be given to orphans and households headed by children, who would be unable to survive without this type of assistance and unable to attend school. WFP and UNICEF and other partners will address the special needs of these groups.

Sustainability

40. The current political instability may compromise the outcomes of PRRO 200988: WFP and its partners will accordingly enhance capacities in community institutions to sustain the delivery of assistance. WFP's livelihood interventions will support social safety nets with a view to transition to a national social-protection system, focusing on food security and nutrition, training in analytical skills and capacity-development for cooperating partners.
41. Sustainability will be promoted through private-sector partnerships and enhanced local production capacities. WFP will gradually expand its supply chain to include local procurement and market monitoring.

Beneficiaries and Targeting

42. Relief assistance will prioritize IDPs, people in besieged areas, returnees, households headed by women, persons with disabilities and vulnerable host communities. The beneficiary-selection tool used by WFP and its cooperating partners since 2016 will be refined in 2017 to ensure accurate targeting and prioritization of beneficiaries and the generation of household lists for cooperating partners.
43. Beneficiaries of the recovery component will be selected from lower-priority GFA groups and vulnerable households that meet WFP criteria in stable areas where partners have projects to rebuild livelihoods. This shift from the relief to the recovery component will depend on the political situation and the presence of partners to implement the projects. Participants in livelihood projects will be monitored, and if targeted households face problems in restoring livelihoods, WFP will assess the situation and provide an appropriate response.

TABLE 4-A: BENEFICIARIES BY ACTIVITY (CBT)

Activity	Boys/ men	Girls/ women	TOTAL
Nutrition support for PLW		60 000	60 000
FFA/FFT	294 000	306 000	600 000
School feeding programme – conditional transfers	24 500	25 500	50 000
TOTAL	318 500	391 500	710 000

TABLE 4-B: BENEFICIARIES BY ACTIVITY (Food)

Activity	Boys/ men	Girls/ women	TOTAL
GFA	2 695 000	2 805 000	5 500 000
Prevention of acute malnutrition – children 6–23 months	117 600	122 400	240 000
Treatment of MAM – children 6–59 months	22 000	23 000	45 000
Treatment of MAM – PLW		30 000	30 000
School feeding – fortified snacks	490 000	510 000	1 000 000
FFA/FFT	117 600	122 400	240 000
Total beneficiaries*	2 812 600	2 927 400	5 740 000

* There is complete overlap between GFA and MAM prevention and partial overlap among other categories. In terms of CBTs, there is complete overlap with the GFA activity for the PLW and education programmes and partial overlap with the FFA/FFT.

Nutritional Considerations and Rations/Value of Transfers

44. WFP and its partners will harmonize the food basket and monitor markets with a view to selecting appropriate transfer modalities and values. CBT beneficiaries bear high transport costs, so the equivalent of USD 2.5 for round-trip transport will be included in the transfer value. This is particularly important to enable women to collect their rations safely.
45. The general food basket provides a diversified ration in line with cultural preferences. To prevent micronutrient deficiencies, wheat flour and vegetable oil will be fortified with vitamins and minerals; salt will be iodized and date bars fortified with micronutrients. Preventive nutrition programmes for children will utilize LNS. Plumpy'Sup will be used in treatment programmes for acutely malnourished children and PLW.

TABLE 5: RATION/TRANSFER BY ACTIVITY (g/person/day)

	Relief	Livelihoods		Nutrition				School feeding	
	GFA (CBTs)	FFA/FFT	FFA/FFT (CBTs)	Acute maln. prevention (children 6–23 months)	MAM treatment (children 6–59 months)	MAM treatment (PLW)	Nutrition support (PLW-CBTs)	School snacks	Conditional transfer for education (CBTs)
Wheat flour	100	100	-	-	-	-	-	-	-
Bulgur wheat	67	67	-	-	-	-	-	-	-
Rice	67	67	-	-	-	-	-	-	-
Red split lentils	40	40	-	-	-	-	-	-	-
Whole lentils	40	40	-	-	-	-	-	-	-
White beans	40	40	-	-	-	-	-	-	-
Oil	36	36	-	-	-	-	-	-	-
Salt	7	7	-	-	-	-	-	-	-
Sugar	33	33	-	-	-	-	-	-	-
LNS – medium quantity	-	-	-	46	-	-	-	-	-
LNS – large quantity	-	-	-	-	92	92	-	-	-
Fortified date bars	-	-	-	-	-	-	-	100	-
UHT milk	-	-	-	-	-	-	-	200	-
USD/person/month			70	-	-	-	25	-	23
TOTAL	430	430	70	46	92	92	25	300	23
Total kcal/day	1 697	1 697		258	500	500		552	-
% kcal from protein	12.5	12.5		8.6	10	10		10.4	-
% kcal from fat	21	21		55	55	55		30.2	-
Feeding days/year	360	360		336	90	120	360	140	270

Supply Chain

46. Externally sourced food will be shipped to Latakia, Tartous and Beirut for transport to WFP facilities, where all food will be packed into rations and transported by partners and commercial companies to final delivery points. This system will be complemented by cross-border delivery of packaged rations from Turkey and Jordan to northern and southern parts of the country.
47. WFP will use its supply-chain expertise to build capacities and stimulate local economies. The supply chain will be flexible enough to respond to changes in the operating environment and to shift from food assistance to CBTs or to use both modalities concurrently.

Performance Monitoring and Evaluation

48. Monitoring and evaluation will continue throughout the Syrian Arab Republic to optimize evidence-based decision-making. The system includes monitoring at distribution points, households and shops to enable continuous observation of processes monitoring, quarterly analysis of outcomes and disaggregation of data by age and gender.
49. WFP coordinates implementation and monitoring through its field offices. Field monitors ensure that women and other vulnerable groups are protected at distributions and follow-up visits, and raise awareness among cooperating partners on gender-based violence and sexual exploitation. Men and women are employed as field monitors because people often feel more comfortable speaking to someone of the same sex. In the first quarter of 2016, 41 percent of GFA post-distribution monitoring surveys were conducted with women respondents.

50. Baseline surveys will be used to collect food-security and livelihood indicators. Food security outcome monitoring will be introduced. Nutrition and education activities will be jointly monitored with partners; indicators will be based on standard or context-specific targets.
51. Remote monitoring will be introduced in insecure and inaccessible locations to triangulate information from other sources. The use of mobile data-collection tools will be expanded to ensure data quality and timely transmission. Outputs will be based on partners' distribution reports and recorded in the Corporate Online Monitoring and Evaluation Tool for triangulation with retailers' payments in the WFP Information Network and Global System II and delivery reports in the Logistics Execution Support System.
52. An evaluation in 2018 will assess the effectiveness, effects and sustainability of PRRO 200988.

Risk Management

53. The security situation may force WFP to reduce its presence in the country. Mitigating actions to maintain business continuity include emergency preparedness, remote management where necessary and flexible contracts with transporters and cooperating partners to enable changes between cross-line and cross-border operations and rapid scaling-up of assistance.
54. The FAO Drought Early Warning System continues as a reliable mechanism for response planning.
55. Funding shortfalls will be mitigated by prioritizing the most vulnerable people for assistance, and by securing adequate funding for projects before proceeding with their implementation, downsizing activities when needed, and continuously monitoring impacts. The risk of bias in the implementation of livelihood activities because of security concerns, lack of cooperation from ministries or a sudden increase in returnees will be mitigated by maintaining a politically neutral project prioritization and high-level advocacy. Scaling up CBTs in the absence of an enabling environment may lead to shortages of qualified outlets and suppliers, misappropriation and forgery of vouchers, and high inflation. These risks will be mitigated by coordination with the authorities, harmonization of vouchers with partners, scaling up e-vouchers and adjusting voucher values to address inflation.
56. Inconsistent access could threaten pipeline continuity and cross-border deliveries into the Syrian Arab Republic. WFP will therefore use a variety of entry corridors and will explore alternative regional food procurement options.

Protection

57. The conflict in the Syrian Arab Republic is characterized by systemic failures with regard to the protection of civilians. Girls and women are at particular risk of sexual violence; young men and boys are at risk of recruitment into armed groups. While an estimated 13.5 million people across the country are in need of protection and humanitarian assistance, an estimated 5.47 million people reside in hard-to-reach and besieged areas. During 2016, WFP was unable to reach 1.75 million people in need of food assistance.
58. In 2016, the United Nations country team increased access to people in besieged and remote areas. WFP has enhanced its protection activities by improving the design of food distribution points to make them more accessible, dignified and safe. The provision of food assistance to IDPs and host families will help to reduce social tensions and reduce the need for negative coping mechanisms. The school-feeding programme will help to mitigate school drop-outs and child labour. Livelihood activities will aim for a high level of participation by women, and will seek to sensitize men with regard to gender issues. The needs of persons with disabilities will be taken into account. Project design, implementation and evaluation will be informed by inputs from women. The timing and type of activities will be based on negotiation to ensure that family and community needs are addressed.

Accountability to Affected Populations

59. WFP will expand its outreach to beneficiaries through media campaigns and its partners to increase awareness of assistance and entitlements. It will provide safe and effective ways for people to provide feedback: the options include social media, a telephone helpline and suggestion boxes at final delivery points. Complaints will be prioritized by severity and responded to by men or women

staff as appropriate; regular analysis of the complaints will inform adjustments to programmes. WFP will engage communities through participatory approaches to ensure that interventions are context specific, socially cohesive and needs-driven.

Environmental and Social Risk Management

60. Livelihood interventions in PRRO 200988 will screen activities for environmental risks with a view to minimizing environmental damage. The security risk at final delivery points, which is rated as medium, will be mitigated by enhancing coordination with local authorities and engaging with communities.
61. Monitoring to detect potential community conflict arising from WFP's programmes will continue, and mitigation measures identified as soon as possible.

Security

62. Security in the Syrian Arab Republic is at level 5: it ranges from level 4 in As-Sweida, Tartous and Latakia to Level 6 in the ISIS-controlled governorates of Deir-ez-Zor and Ar-Raqqa. Current security measures include mandatory use of armoured vehicles equipped with tracking devices and systems to log movements; at least two armoured vehicles must normally accompany a field mission.
63. Advance approval from the Executive Director and the Under-Secretary-General of the United Nations Department of Safety and Security is required for missions to Level 6 areas, security assessments prior to staff deployment to volatile areas and mandatory completion by staff of security training and briefing on arrival in-country.

ANNEX I-A

PROJECT COST BREAKDOWN			
	Quantity (mt)	Value (USD)	Value (USD)
Food			
Cereals	506 550	172 289 982	
Pulses	302 400	276 772 003	
Oil and fats	91 728	96 869 273	
Mixed and blended food	31 896	57 752 917	
Others	504 693	400 207 915	
Total food	1 437 267	1 003 892 089	
External transport		32 597 451	
Landside transport, storage and handling		122 757 314	
Other direct operational costs: food		153 218 806	
Food and related costs¹		1 312 465 661	
Cash-based transfers		96 165 000	
Cash-based related costs		1 794 819	
Cash-based transfers and related costs			97 959 819
Capacity development and augmentation			6 227 183
Direct operational costs			1 416 652 663
Direct support costs (see Annex I-B) ²			74 917 740
Total direct project costs			1 491 570 402
Indirect support costs (7.0 percent) ³			104 409 928
TOTAL WFP COSTS			1 595 980 331

¹ This is a notional food basket for budgeting and approval. The contents may vary.

² Indicative figure for information purposes. The direct support cost allotment is reviewed annually.

³ The indirect support cost rate may be amended by the Board during the project.

ANNEX I-B

DIRECT SUPPORT REQUIREMENTS (USD)	
Staff and staff-related	
Professional staff	26 179 205
General service staff	9 143 376
Danger pay and local allowances	4 634 304
Subtotal	39 956 885
Recurring and other	11 194 372
Capital equipment	4 693 238
Security	1 770 940
Travel and transport	11 855 804
Assessments, evaluations and monitoring¹	5 446 500
TOTAL DIRECT SUPPORT COSTS	74 917 740

¹ Reflects estimated costs when these activities are carried out by third parties.

ANNEX II: LOGICAL FRAMEWORK		
Results	Performance indicators	Assumptions
Cross-cutting		
Affected populations are able to hold WFP and partners accountable for meeting their hunger needs in a manner that reflects their views and preferences	Proportion of assisted people informed about the programme (who is included, what people will receive, length of assistance) Proportion of project activities for which beneficiary feedback is documented, analysed and integrated into programme improvements	Food pipeline is uninterrupted. Monitoring is regularly conducted. Cooperating partners have the capacity to implement WFP activities.
Affected populations are able to benefit from WFP programmes in a manner that ensures and promotes their safety, dignity and integrity	Proportion of targeted people accessing assistance without protection challenges	Food pipeline is uninterrupted. Monitoring is regularly conducted. Cooperating partners have the capacity to implement WFP activities.
Improved gender equality and women's empowerment among WFP-assisted population	Proportion of households where women, men, or both women and men make decisions on the use of food/cash/vouchers, disaggregated by transfer modality Proportion of food assistance decision-making entity – committees, boards, teams, etc. – members who are women Type of transfer (food, cash, voucher, no compensation) received by participants in WFP activities, disaggregated by sex and type of activity	Food pipeline is uninterrupted. Monitoring is regularly conducted. Cooperating partners have the capacity to implement WFP activities.

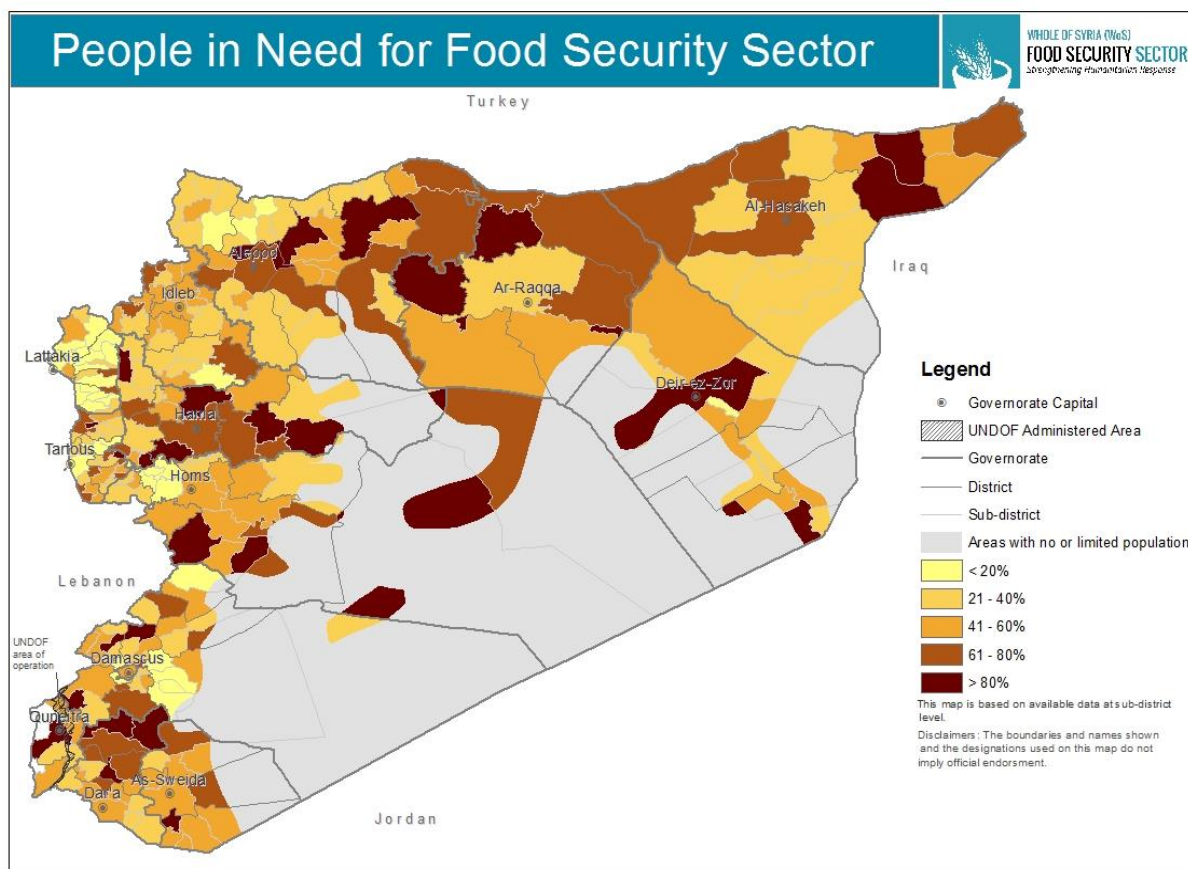
ANNEX II: LOGICAL FRAMEWORK		
Results	Performance indicators	Assumptions
Strategic Objective 1: Save lives and protect livelihoods in emergencies		
Strategic Result 1		
Strategic outcome category		
1.1 Maintained/enhanced household access to adequate food	1.1.1 Food Consumption Score, disaggregated by sex of household head 1.1.2 Coping Strategy Index (food) 1.1.2 Coping Strategy Index (livelihood) 1.1.3 Food expenditure share 1.1.4 Proportion of the population in targeted communities reporting benefits from an enhanced asset base Retention rate in WFP-assisted primary schools Enrolment: Average annual rate of change in number of boys enrolled in WFP-assisted primary schools	Adequate resources are secured. Complete food basket is made available.
Output category		
A1. Unconditional resources transferred	A.1 Number of women, men, boys and girls receiving food/cash-based transfers/commodity vouchers A.2 Quantity of food provided A.4 Total value of vouchers (expressed in food/cash) redeemed by targeted beneficiaries A.6 Number of institutional sites assisted A.7 Number of retailers participating in cash-based transfer programmes	

ANNEX II: LOGICAL FRAMEWORK		
Results	Performance indicators	Assumptions
A2. Conditional resources transferred	A.1 Number of women, men, boys and girls receiving food/cash-based transfers/commodity vouchers A.4 Total value of vouchers (expressed in food/cash) redeemed by targeted beneficiaries A.7 Number of retailers participating in cash-based transfer programmes	
B. Nutritious foods provided	B.1 Quantity of fortified food provided	
C. Capacity development and technical support provided	C.1 Number of people trained C.2 Number of capacity development activities provided C.3 Number of technical support activities provided	Technical skills and partners are available.
D. Assets created	D.1 Number of assets built, restored or maintained by targeted households and communities, by type and unit of measure	Technical skills and partners are available.
Strategic Objective 2: Support or restore food security and nutrition and establish or rebuild livelihoods in fragile settings and following emergencies		
Strategic Result 2		
Strategic outcome category		
2.1 Improved consumption of high-quality, nutrient-dense foods among targeted individuals	2.1.1 Proportion of eligible population that participates in programme (coverage) 2.1.2 Proportion of target population that participates in an adequate number of distributions (adherence) 2.1.4 MAM treatment performance: ➤ MAM treatment recovery rate (%) ➤ MAM treatment mortality rate (%) ➤ MAM treatment default rate (%) ➤ MAM treatment non-response rate (%) 2.1.5 Minimum dietary diversity – Women	Specialized nutritious foods are provided regularly and in a timely manner. Access to community health facilities is available. Complementary health and nutrition support is available to targeted beneficiaries. Unimpeded access to assess the needs of affected populations is available.

ANNEX II: LOGICAL FRAMEWORK		
Results	Performance indicators	Assumptions
Output category		
A2. Conditional resources transferred	A.1 Number of women, men, boys and girls receiving food/cash-based transfers/commodity vouchers A.2 Quantity of food provided A.4 Total value of vouchers (expressed in food/cash) redeemed by targeted beneficiaries	Flexible port clearance procedure on humanitarian imported food is secured. Complete food basket is made available. There is no disruption of supply, transport and distribution of commodities. Adequate humanitarian access is secured. Regular programme monitoring is conducted.
B. Nutritious foods provided	B.2 Quantity of special nutritious foods provided	
C. Capacity development and technical support provided	C.1 Number of people trained C.2 Number of capacity development activities provided C.3 Number of technical support activities provided	
E. Advocacy and education provided	E.1 Number of targeted caregivers (male and female) receiving three key messages delivered through WFP-supported messaging and counselling E.2 Number of people exposed to WFP-supported nutrition messaging E.3 Number of people receiving WFP-supported nutrition counselling	
Strategic Objective 4: Reduce undernutrition and break the intergenerational cycle of hunger		
Strategic Result 5		
Strategic outcome category		
5.1 Enhanced capacities of public- and private-sector institutions and systems, including local responders, to identify, target and assist food-insecure and nutritionally vulnerable populations	5.1.1 Zero Hunger Capacity Scorecard	

ANNEX II: LOGICAL FRAMEWORK		
Results	Performance indicators	Assumptions
Output category		
K. Partnerships supported	K.1 Number of partners supported	
C. Capacity development and technical support provided	C.1 Number of people trained	
	C.2 Number of capacity development activities provided C.3 Number of technical support activities provided	

ANNEX III



UNDOF – United Nations Disengagement Observer Force

The designations employed and the presentation of material in this publication do not imply the expression of any opinion whatsoever on the part of the World Food Programme (WFP) concerning the legal status of any country, territory, city or area or of its frontiers or boundaries.

ANNEX IV

PRIORITIZATION PLAN			
Activity	Beneficiaries		Rationale for changing response
	Projected needs	Resource-based plan	
Strategic Objective 1: Save lives and protect livelihoods in emergencies			
General food assistance	5 500 000	3 500 000	Food assistance will be distributed to vulnerable households needing food assistance – 1.5 million returnees and 2 million IDPs and residents, including those in remote and besieged communities where WFP food assistance is the only source of food.
Targeted supplementary feeding: treatment of moderate acute malnutrition in children 6–59 months	45 000	45 000	Treating malnourished children will be prioritized because it saves lives.
Targeted supplementary feeding: treatment of moderate acute malnutrition in PLW	30 000	30 000	As some of the most vulnerable people, PLW will be included in life-saving activities.
Strategic Objective 2: Support or restore food security and nutrition and establish or rebuild livelihoods in fragile settings and following emergencies			
Supplementary feeding: prevention of acute malnutrition in children 6–23 months	240 000	120 000	Prevention of acute malnutrition will be prioritized in areas with high acute malnutrition rates on the basis of assessments.
FFA participants	1 200 000	600 000	Livelihood activities may help to meet 50 percent of projected needs in areas with potential for collaboration with partners.
School meals	1 050 000	500 000	WFP will maintain the emergency operation beneficiary numbers in locations where enrolment and attendance are low.

Acronyms Used in the Document

CBT	cash-based transfer
FAO	Food and Agriculture Organization of the United Nations
FFA	food assistance for assets
FFT	food assistance for training
GFA	general food assistance
HDI	Human Development Index
HRP	Humanitarian Response Plan
IDP	internally displaced person
LNS	lipid-based nutrient supplement
MAM	moderate acute malnutrition
PLW	pregnant and lactating women
PRRO	protracted relief and recovery operation
SDG	Sustainable Development Goal
UNDP	United Nations Development Programme
UNFPA	United Nations Population Fund
UNICEF	United Nations Children's Fund