

# South Sudan

## 2016 Third Quarterly Operational Briefing

---

Presentation to the  
**WFP Executive Board**

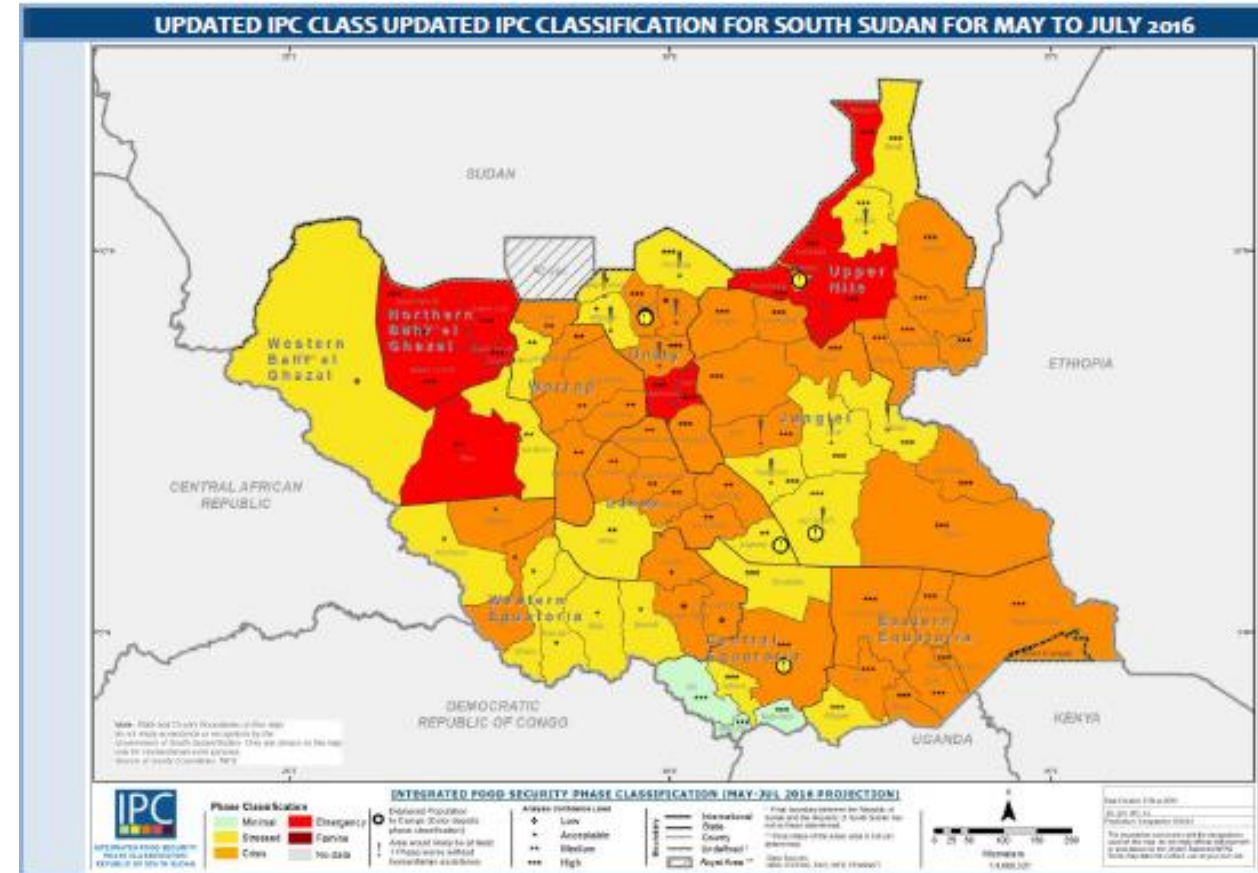
WFP Rome Auditorium | 07 July 2016

The most recent **IPC analysis** shows that food insecurity has deteriorated across the country, with the most significant decline seen in areas which are traditionally agro-pastoralist and better positioned to meet their own food needs.

The IPC results estimate **4.8 million people** will be severely food insecure (Phases 3, 4 and 5) this month (July 2016), a significant increase from the 4.3 million April 2016 projection and 2.8 million at the beginning of the year.

Rising food insecurity is driven by ongoing insecurity, economic deterioration, and depleted stocks from the last harvest.

WFP is scaling up its efforts to reach food insecure households through the lean season to prevent a further decline in the food security and nutritional status of the population.



**727,500 people** have fled to neighbouring countries.

**1.6 million people** are displaced within South Sudan.

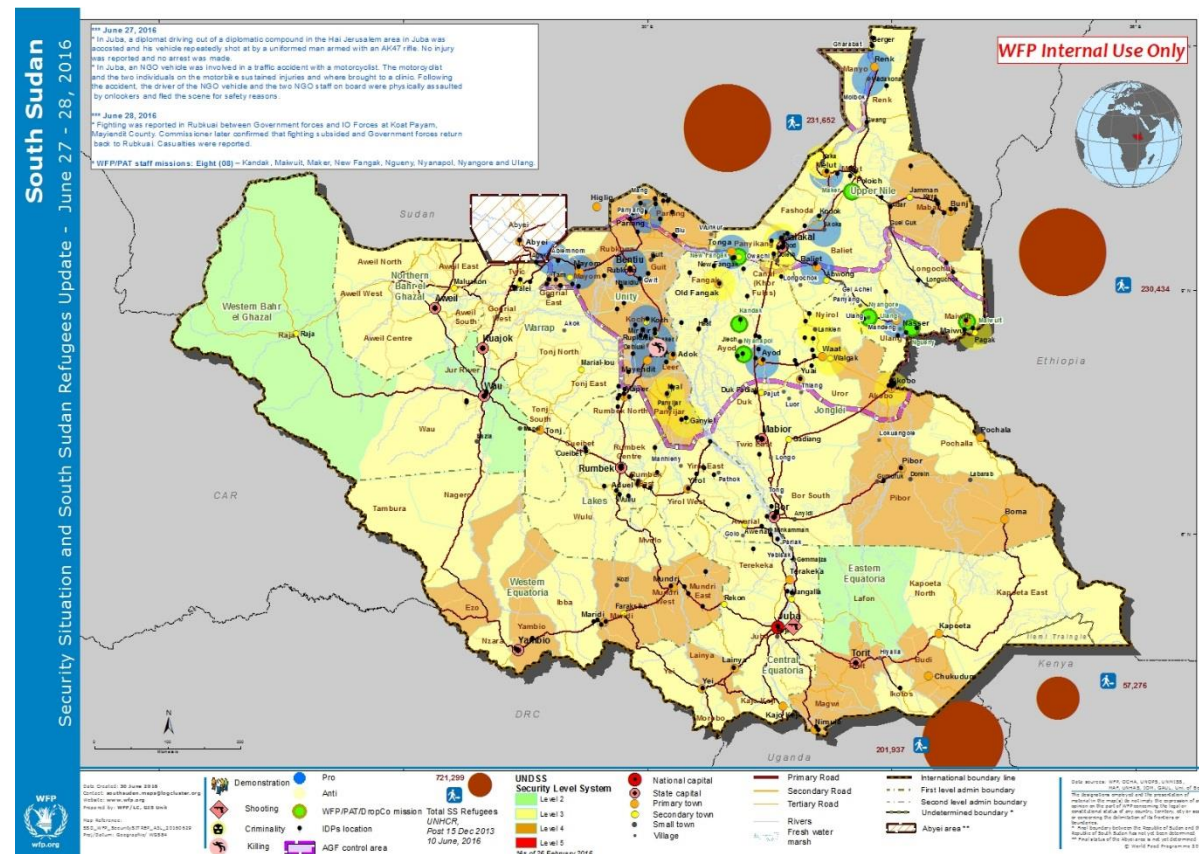
## Criminal Attacks Affecting WFP

Recent weeks have seen an increase in criminally-motivated attacks on main roads, affecting contracted trucks transporting WFP commodities, with at least eight such attacks recorded in May and 12 in June, most in Eastern Equatoria.

## Localised Conflict

Pockets of instability continue in some areas of the country with continuous violations of the ceasefire. Most recently, fighting broke out in Wau and Raja, displacing more than 40,000 people and increasing humanitarian needs.

At the same time, the continued operationalization of the 28 states remains a highly contentious and heavily politicised issue, presenting significant risks to the peace process.





## EMOP 200859

Emergency Operation in Response to Conflict in South Sudan

October 2015 – September 2016



**1.6 million**

People Targeted (2016)



**1.1 million**

People Reached (May 2016)



**USD 554.5 million**

budget to cover needs



**USD 432.8 million**

received



**USD 66.7 million**

6-month net funding requirements  
(June 2016 - November 2016)



### General Food Distribution

Food rations distributed to over 1 million people in households affected by conflict in the Greater Upper Nile region of South Sudan.



### Voucher

Over USD760,000 in cash based assistance to households seeking shelter at the UN Protection of Civilian (PoC) sites in Juba, Akobo and Mingkaman.



### School Feeding

Food for Education programmes ongoing to provide daily school meals to approx. 30,000 school children each month.



### Nutrition

Nutrition assistance provided to over 197,400 children under five and pregnant/nursing mothers for the prevention & treatment of malnutrition.



## PRRO 200572

Food & Nutrition Assistance for Relief & Recovery, Supporting Transition & Enhancing Capabilities to Ensure Sustainable Hunger Solutions  
January 2014 – December 2016



**1.6 million**

People Targeted (2016)



**900,000**

People Reached (May 2016)



**USD 767.7 million**

budget to cover needs



**USD 524.3 million**

received



**USD 39.4 million**

6-month net funding requirements  
(June 2016 - November 2016)



### General Food Distribution

Food rations distributed to over 590,000 people in May – scale up of distributions through lean season in areas with most significant decline in food security.



### Cash & Food for Assets

Cash/food assistance for assets programmes supported over 159,000 people in May. Transfers delinked from completion of asset creation activities in areas most affected by deteriorating food security to support households to meet their food needs through the lean season.



### School Feeding

Food for Education programmes ongoing to provide daily school meals and take home rations to approx. 190,000 school children.



### Nutrition

Nutrition assistance provided to nearly 190,000 children under five and pregnant/nursing mothers for the prevention & treatment of malnutrition.





## SO 200786

Provision of Humanitarian Air Services in the Republic of South Sudan

Jan 2015 – Dec 2016



**USD 117.9 million**  
budget to cover needs



**USD 71.2 million**  
received



## SO 200778

South Sudan Logistics Cluster Activities in Support of the Humanitarian Situation in South Sudan

Jan 2015 – Dec 2016



**USD 71 million**  
budget to cover needs



**USD 67 million**  
received



## SO 200931

Emergency Telecommunications Cluster Activities and Services in Support of the Humanitarian Community in South Sudan

Jan 2016 – Dec 2016



**USD 663,000**  
budget to cover needs



**USD 663,000**  
received



## SO 200379

Feeder Road Construction in Support of WFP Operations in South Sudan

Mar 2011 – Dec 2018



**USD 167.3 million**  
budget to cover needs



**USD 96.9 million**  
received



## SO 200775

Strengthening Food Security & Livelihoods Cluster Coordination in Response to Humanitarian Situation in South Sudan

Jan 2015 – December 2016



**USD 2 million**  
budget to cover needs



**USD 1.4 million**  
received

## **Prepositioning**

Completing the prepositioning exercise to the maximum extent possible before the roads close

## **Scaling Up**

Expanding and maintaining a scaled up response in areas of greatest need through the lean season, notably the Greater Bahr El Ghazal and Equatorias

## **Transition**

Transitioning from blanket coverage to more targeted and conditional approaches where appropriate, including the Greater Upper Nile region

## **Presence**

Re-establishing permanent or semi-permanent partner presence in deep field locations to improve programme quality and oversight

## Ongoing Monitoring Missions

Close to 2,000 households who received WFP assistance were included in the latest post-distribution monitoring (PDM) process covering March – April. The second round for 2016 will start in July 2016 and will cover approximately 3,000 households.

Monthly process monitoring at distribution points is ongoing with approximately 144 sites monitored across the country in May.

## Third Party Monitoring

In addition to WFP dedicated monitoring teams based in all offices inside South Sudan, WFP started using third party monitoring company this year to carry out outcome and process monitoring in the three affected states of Jonglei, Unity and Upper Nile.

## Mobile Data Collection

Since May 2014, WFP has been using a mobile data collection tool to collect data from the field.





**989** staff in-country  
**175** International  
**814** National



**Country Office** in Juba

- Sub-Office** in Juba
- Sub-Office** in Torit
- Sub-Office** in Bor
- Sub-Office** in Rumbek
- Sub-Office** in Wau
- Sub-Office** in Aweil
- Sub-Office** in Wunrok
- Sub-Office** in Malakal
- Field-Office** in Kapoeta
- Field-Office** in Mingkaman
- Field-Office** in Abyei
- Field-Office** in Yida
- Field-Office** in Maban



**Cooperating Partners**

59 International NGOs  
37 National NGOs



**22 WFP managed** warehouses  
in the country



**16 fixed wing aircraft**  
in the country

**11 helicopters**  
in the country

## Access Constraints

- Deteriorating road conditions limiting deliveries
- Increasing criminality targeting WFP and commercial transporters

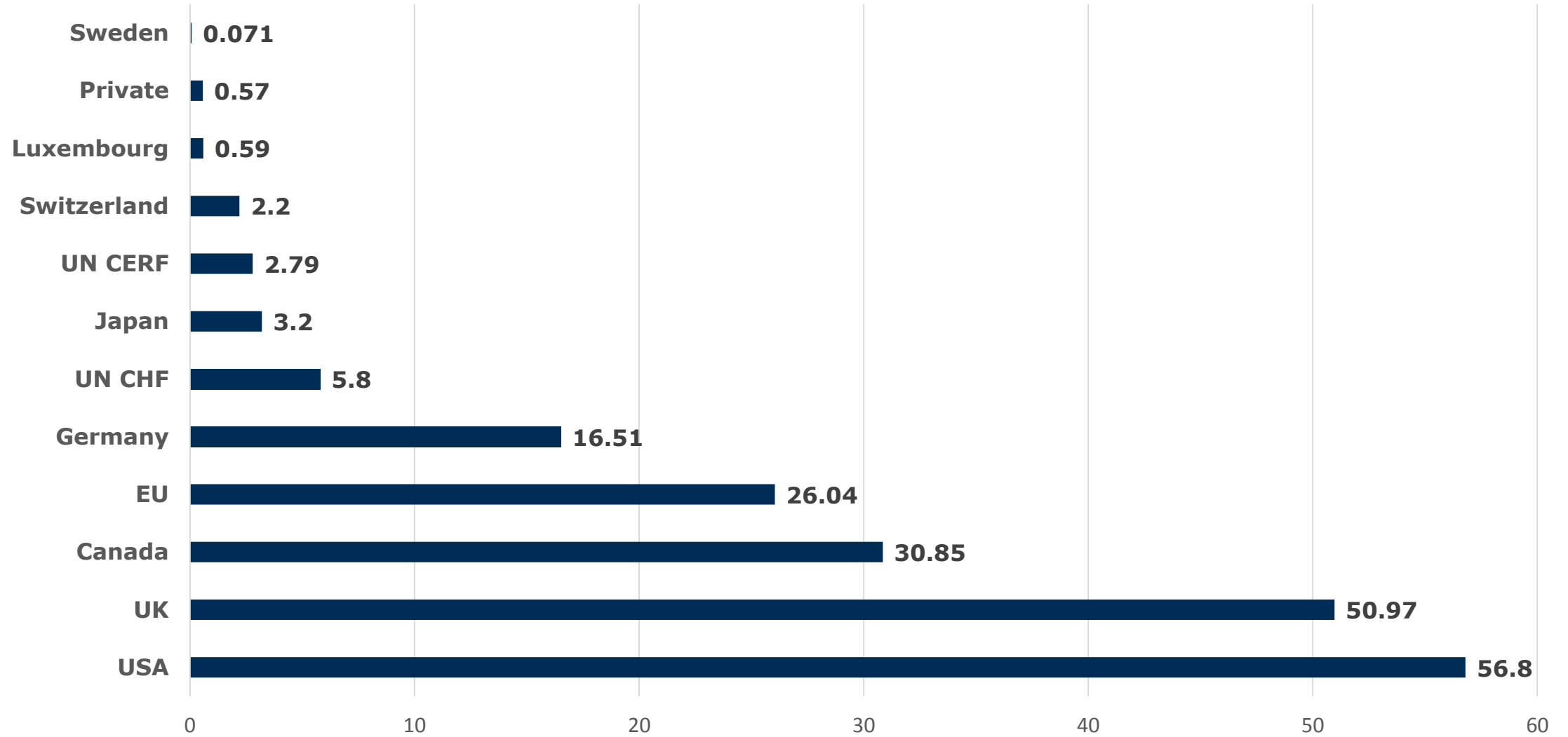
## Resourcing Constraints

- Operations relatively well-funded at this time
- Slow pace of political progress impacts on donors' willingness to continue providing support to South Sudan
- Medium to long-term funding environment expected to be more challenging

## Capacity Constraints

- Limited partner presence in conflict-affected deep field locations
- High staff turnover amongst partners

# 2016



**TOTAL:** USD 196.3 million

## Inter-Agency

- WFP operates the United Nations Humanitarian Air Service (UNHAS) on behalf of the humanitarian community, providing safe and reliable air transport to thousands of humanitarian personnel and cargo.
- Integrated Rapid Response Missions (IRRM) providing combination of food and nutrition assistance along with WASH, health and livelihoods services.

## Clusters

- WFP co-leads the Food Security and Livelihoods Cluster with FAO, which is dedicated to coordinating the food security sector nationally to ensure the most efficient response to food availability and access issues.
- Through the Logistics Cluster, WFP supports the humanitarian community by providing logistical expertise, coordination and transportation of humanitarian cargo.
- The Emergency Telecommunications Cluster (ETC) provides necessary telecommunication services where basic infrastructure is limited.

## CONTEXTUAL RISKS:

- Economic fluctuations coupled with lean season deepening food insecurity
- Political instability and localized conflicts with violations of ceasefire

## PROGRAMMATIC RISKS:

- Pipeline breaks in time of lean season when hunger gap is the largest
- WFP contractors and transporters face both security incidents and poor infrastructure
- High turnover and inconsistent capacity of cooperating partners

## INSTITUTIONAL RISKS:

- Reputational concerns as result of volatile environment, reduced capacity to cover beneficiary needs and media attention

| <b>RISKS</b>  | <b>MITIGATION MEASURES</b>   |
|---|--|
| <p><b>Pipeline breaks in time of lean season when hunger gap is the largest</b></p>                 | <ul style="list-style-type: none"> <li>• Additional resources prioritized to meet immediate scale-up requirements and to divert pipeline breaks in essential commodities.</li> <li>• Priority given to those with the most acute needs, followed by those with phase three levels of food insecurity.</li> </ul> |
| <p><b>Insecurity</b></p>  | <ul style="list-style-type: none"> <li>• Informed consent and continued access negotiations.</li> <li>• Use of UNMISS resources as appropriate and according to agreed guidelines.</li> </ul>  |
| <p><b>WFP contractors and transporters face both security incidents and poor infrastructure</b></p> | <ul style="list-style-type: none"> <li>• Negotiate movement of WFP goods in insecure areas showcasing positive effects on local context and trade;</li> <li>• Prepositioning of food and analysis of prepo locations based on current risk assessment.</li> </ul>  |
| <p><b>High turnover and inconsistent capacity of cooperating partners</b></p>                       | <ul style="list-style-type: none"> <li>• Strengthened capacity assessments ahead of agreement signing processes, including a dedicated Partnership unit;</li> <li>• Advocacy on NGO bill implementation.</li> </ul>  |



- Political and economic instability
- Lean season deepens the hunger gap
- Insecurity
- Poor infrastructure

**727,607** refugees from South Sudan (as of 01 July)

**938,407** expected by end of 2016 (UNHCR estimate)

- Insecurity and deteriorating food and nutrition security situation may encourage more people to flee – particularly to Sudan and Uganda.
- Nutritional status of new refugees expected to worsen given conditions in South Sudan. GAM rates, chronic malnutrition and micronutrient deficiency continue to be an issue in refugee camps in the region.
- **USD 74 million** required in 2016 to address critical resource shortfalls faced by refugee support operations throughout the region.

